



JAMISON
COMMERCIAL PARTNERS

MELBOURNE FL MEDICAL/RETAIL

6345 N WICKHAM RD, SUITE 102
MELBOURNE, FL 32940

FOR LEASE

Jamison Commercial Partners is pleased to present this 2,980± SF medical or retail space for lease located on the rapidly expanding North Wickham Rd. in Melbourne FL.

PROPERTY OVERVIEW

- » Available for lease
- » Convenient access from N Wickham Rd
- » Outparcel to The Fresh Market Shopping Center
- » Parking: 5 per 1,000 SF
- » ~2,980 SF excellent medical or retail space
- » Fantastic signage
- » Great Co-tenancy
- » Traffic Counts: AADT 27,000



CHUCK HOLLIDAY

SENIOR VICE PRESIDENT | 407.256.2554
CHOLLIDAY@JAMISONCOMMERCIAL.COM

GUNNER LESLIE

VICE PRESIDENT | 407.949.2100
GLESLIE@JAMISONCOMMERCIAL.COM

JAMISONCOMMERCIAL.COM

2023 DEMOGRAPHICS



GENERAL POPULATION

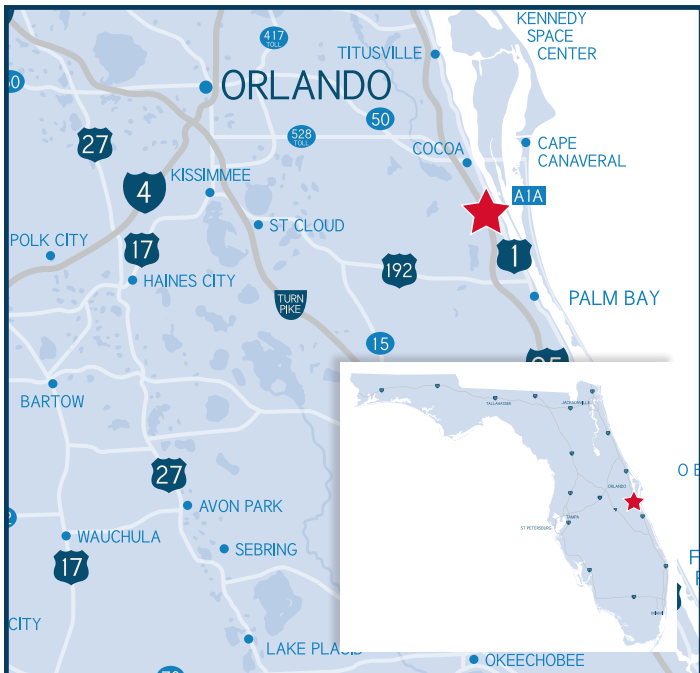


NUMBER OF HOUSEHOLDS

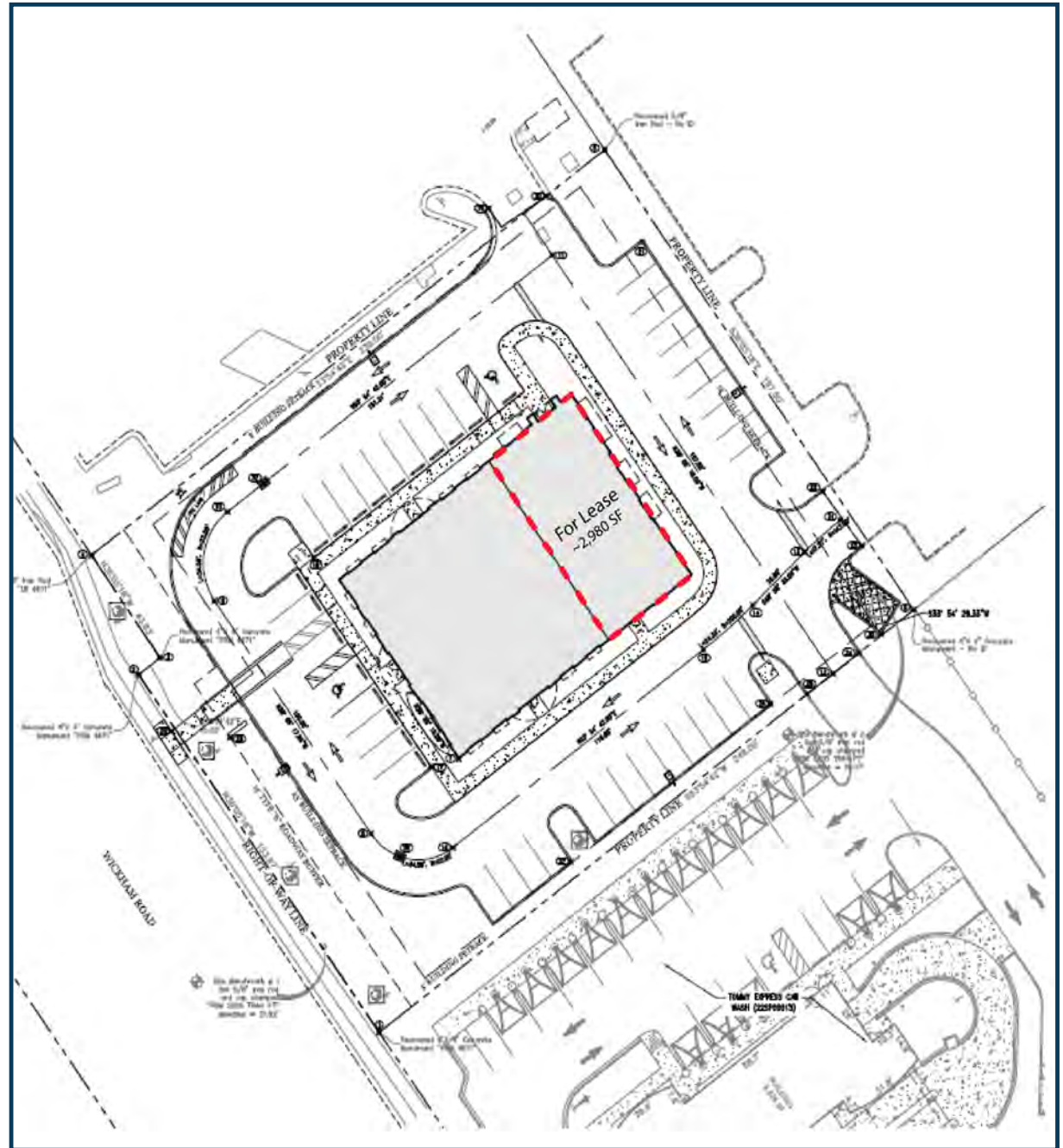


AVG. HOUSEHOLD INCOME

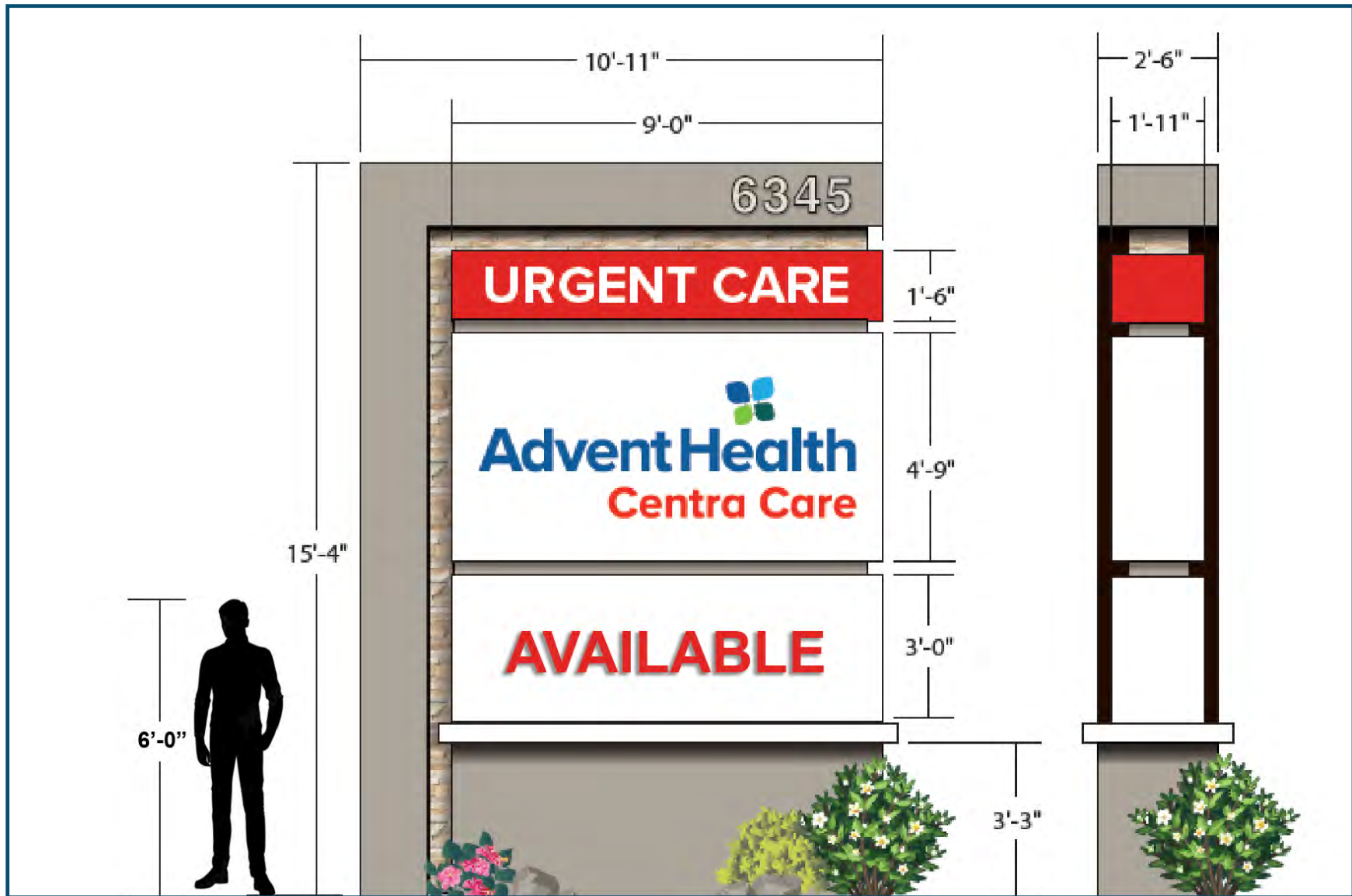
	1 MILE	3 MILE	5 MILE
GENERAL POPULATION	4,377	34,613	92,861
NUMBER OF HOUSEHOLDS	2,098	14,622	40,608
AVG. HOUSEHOLD INCOME	\$153,670	\$131,849	\$121,702



SITE PLAN



MONUMENT SIGN



SOUTHWEST VIEW



SOUTHEAST VIEW

BUILDING ELEVATIONS





BUILDING ELEVATION



BUILDING ELEVATION



PIN MAP

JAMISON COMMERCIAL PARTNERS - 135 W. CENTRAL BLVD., STE. 450, ORLANDO, FL 32801

No warranty or representation, express or implied, is made as to the accuracy of the information contained herein, and same is submitted subject to errors, omissions, change of price, rental or other conditions, withdrawal without notice, and to any special listing conditions imposed by our principals.

JAMISONCOMMERCIAL.COM