

# BOSTON CHILDREN'S MUSEUM 308 CONGRESS STREET



- ▶ *Tour 6th Floor*
- ▶ *Property Website*



## AVAILABLE SPACE

**5TH FLOOR**  
2,772 RSF

**6TH FLOOR (SUBDIVIDABLE)**  
2,400 SF - 10,597 RSF

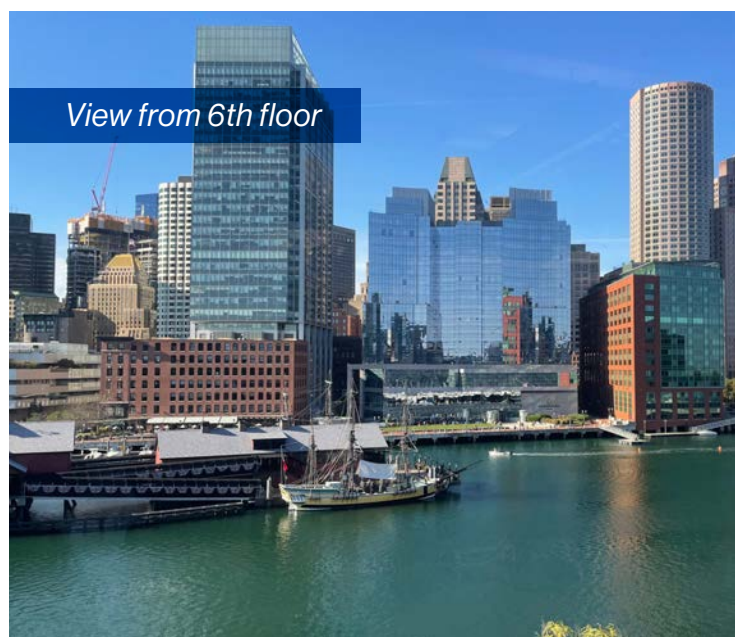
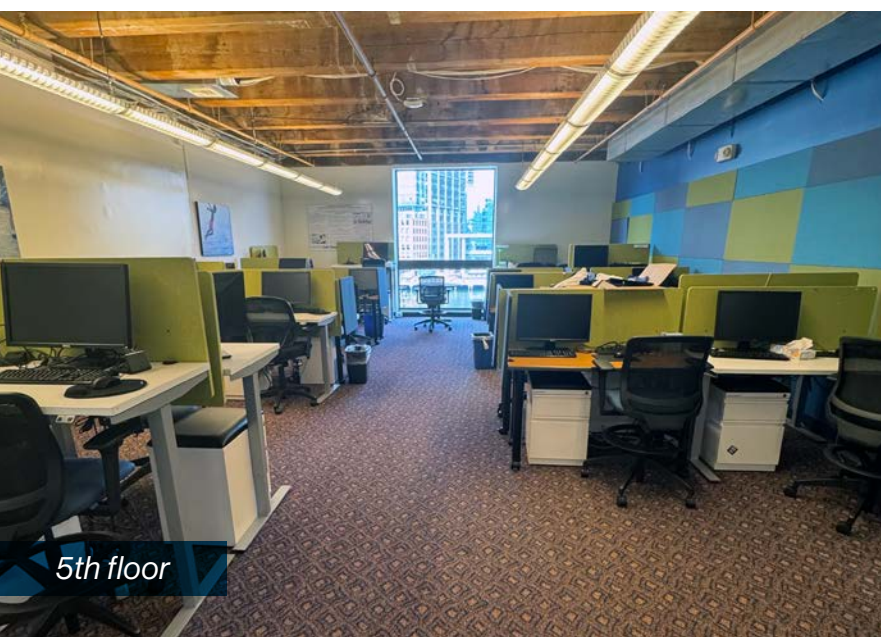
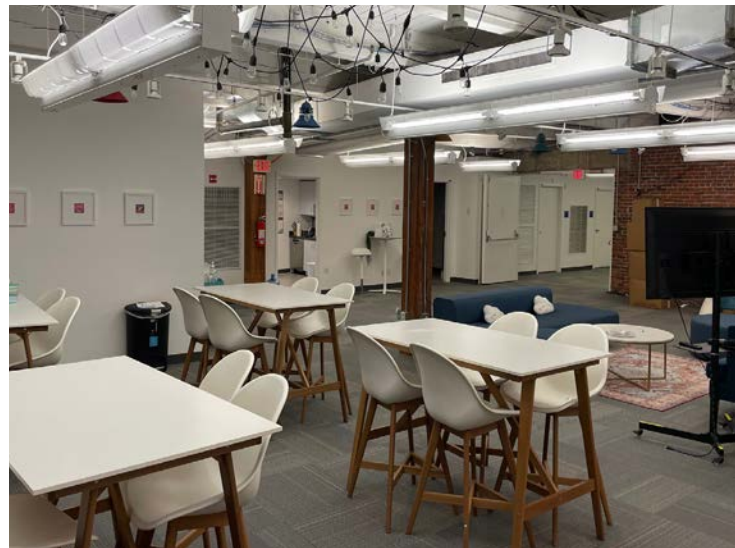
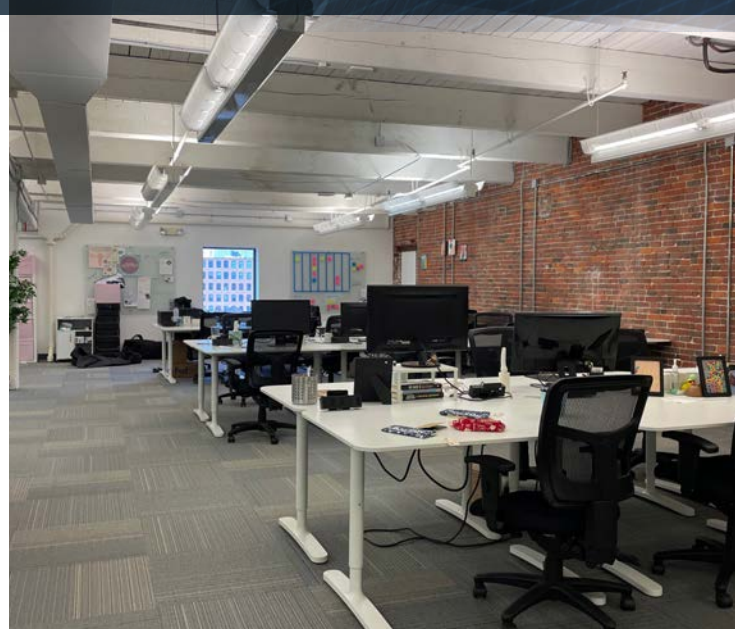
## HIGHLIGHTS

- Brick & beam office space with character and charm
- Spectacular views of Boston Harbor and Fort Point Channel
- On-site conference facility
- 24/7 lobby attendant
- Amenities on-site and within walking distance
- Short walk to South Station (MBTA Red Line, Commuter Rail, Amtrak)
- Unique opportunity to associate with the iconic Boston Children's Museum



# 308 CONGRESS STREET

## INTERIOR PHOTOS



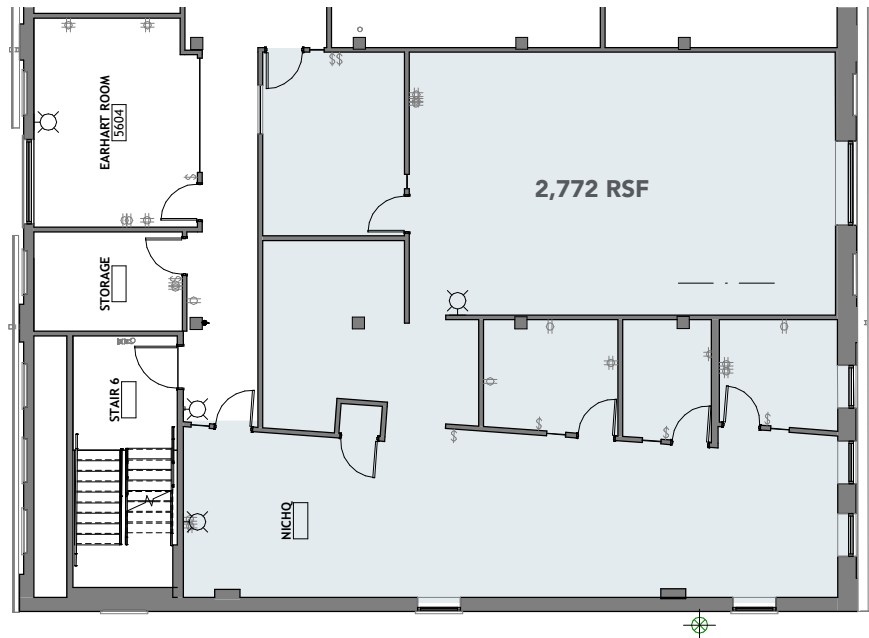


# 308 CONGRESS STREET

## FLOOR PLANS

### 5TH FLOOR

2,772 RSF



### 6TH FLOOR

2,400 SF - 10,597 RSF



**Christopher Rogers**  
EVP, Principal  
617.974.6363  
crogers@fpcre.com

**Ellie Fantini Cullinan**  
EVP, Principal  
617.835.3323  
ecullinan@fpcre.com

**Christiaan Bosse**  
Associate  
617.721.1342  
cbosse@fpcre.com

► *Tour 6th Floor*

[www.fpcre.com](http://www.fpcre.com)

The information contained herein has been obtained through sources deemed reliable by Freudenheim Partners, but cannot be guaranteed for its accuracy. Any interested party should undertake their own inquiries as to the accuracy of the information. This publication is the copyrighted property of Freudenheim Partners and/or its licensor(s). © 2025. All rights reserved.

265 Franklin Street, 16th Floor, Boston 02110