
COMMERCIAL REAL ESTATE SERVICES COMPANY

LAND FOR SALE

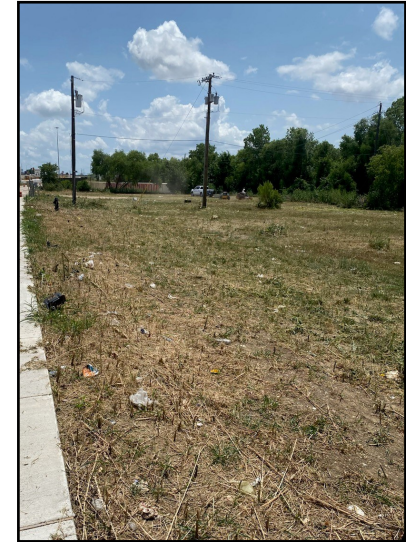
**.0769 acre with
Bill Board Lease Income**

**1640 S I-35E
Carrollton, TX 75006**

Joyce T. Frazier

214.500.5867

joyce7500@sbcglobal.net



Location: West side of Interstate 35E between Crosby Road to the north and Valwood Parkway to the south just south of downtown Carrollton

- Free way zoning
- Approximately 130 feet of frontage (to be verified)
- Curb cut
- All utilities to the site
- Asking \$ 536,000 for land at \$16.00 / sf
- Asking additional \$ 145,000 for Bill Board
- Land can be combined with 1648 S I-35E and have a total of 1.8577 acres

The information furnished is from sources deemed reliable, but is not guaranteed by us and is subject to change in price, corrections, errors and omissions, prior sales or withdrawal without notice.