

FOR LEASE

314 & 318 E NAKOMA DR, SAN ANTONIO, TX



1,383 SF Flex Space Available

ABOUT THE PROPERTY:

314 - 318 E Nakoma Drive is a multi-tenant Industrial park in San Antonio's North Central Submarket. 1,383 SF of flex space is currently available. Tenants benefit from office/warehouse space, grade-level loading, and quick access to US-281, Wurzbach Pkwy, Loop 410, and Loop 1604.

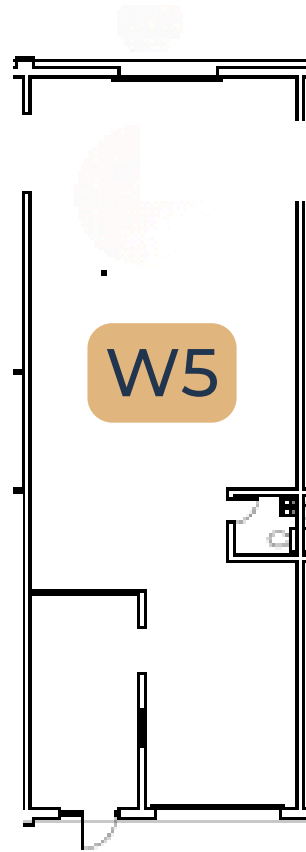
FEATURES:

- 1,383 SF available now
- Office/warehouse spaces
- Grade-level loading
- Quick access to US-281, Wurzbach Pkwy, Loop 410, and Loop 1604
- Renovations underway

SITE PLAN - 318



AVAILABILITY - STE W5



1,383 SF
warehouse/office space



CONTACT OUR TEAM



Colin McLellan

Partner

cmclellan@llanorealty.com

(210) 908-6345



Chris Moran

Associate

cmoran@llanorealty.com

(210) 951-5689



Jake Esparza

Senior Associate

jesparza@llanorealty.com

(210) 874-5314