

SALT LAKE CITY FLEX UNIT AVAILABLE FOR LEASE

1745 SOUTH MILESTONE DRIVE, SALT LAKE CITY 84104

RATE REDUCTION! | MOVE-IN READY!



PROPERTY HIGHLIGHTS

- Unit 4-A: 2,500 SF Newly Remodeled Flex
- 1,500 SF Warehouse Space
- 500 SF Main Level Office Space
- 500 SF Mezzanine Space
- (1) 12' X 14' Overhead Door
- 3 Phase Power | 200 Amp | 208 Volt
- Zoning: M-1 (Light Industrial)
- Clear Height: 24'
- Ample Parking Available
- Easy Access to S.R. 201, I-215 and Bangerter Highway

LEASE RATE REDUCED!: \$1.55/SF MONTH NNN

CONTACT

801.617.1700

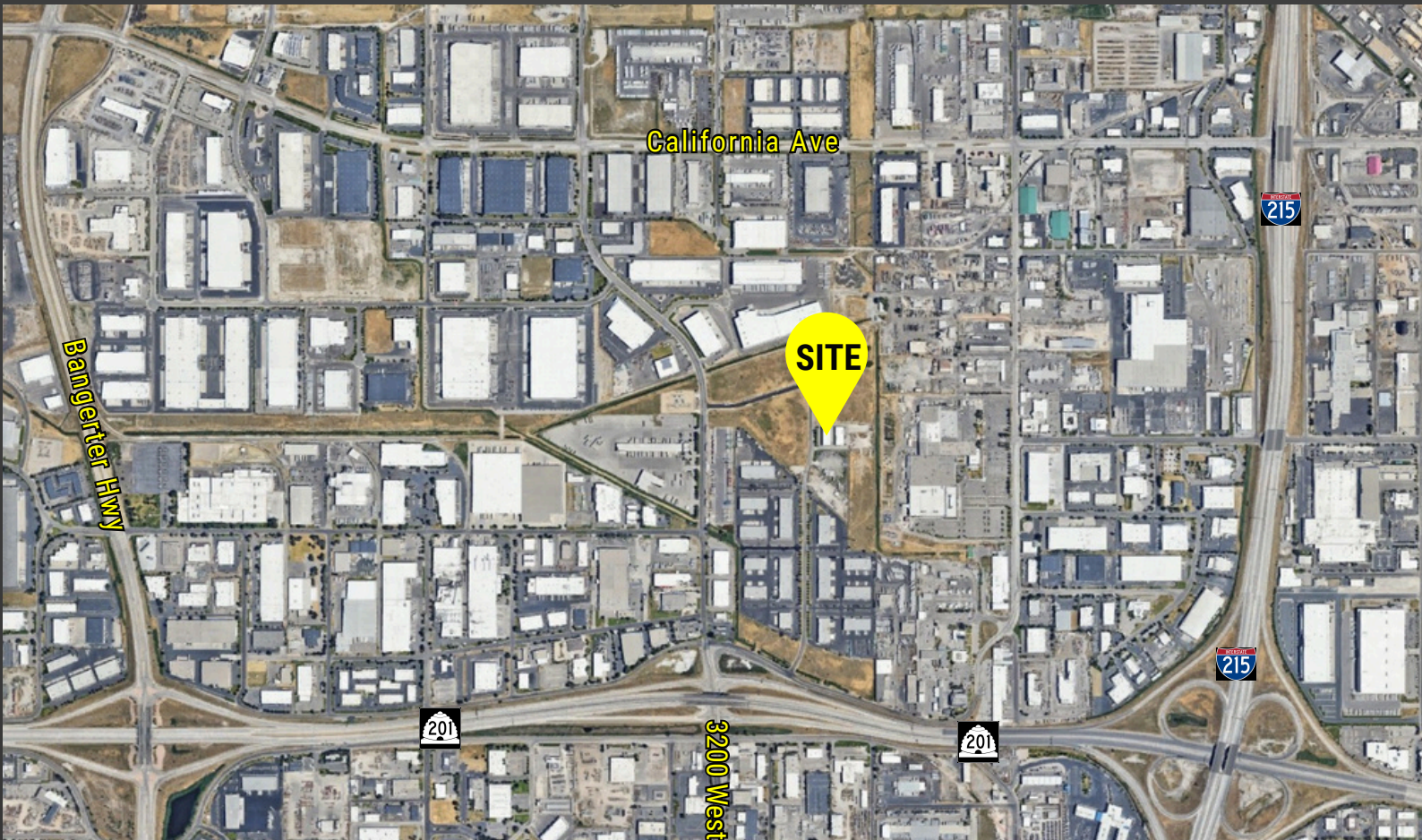
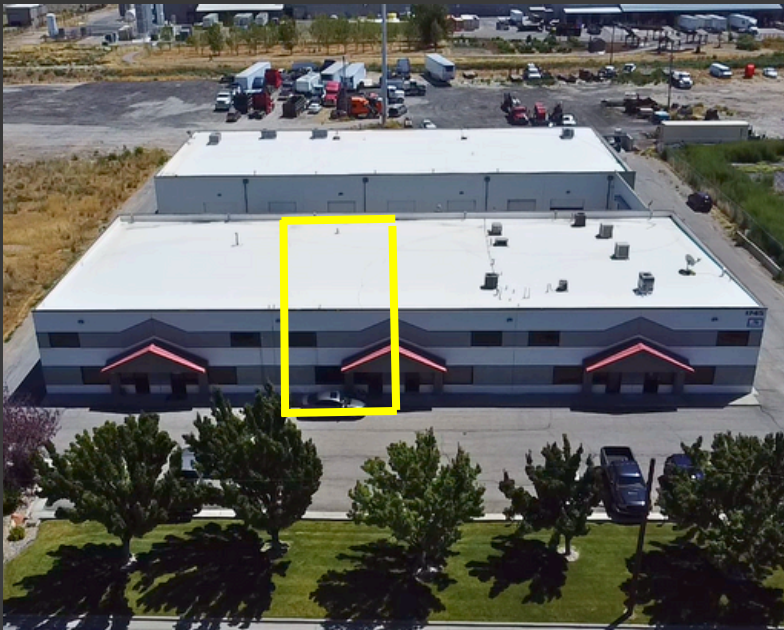
JAMES MERRILL | JAMES.MERRILL@CRCNATIONWIDE.COM

GAVIN PERRYMAN | GAVIN.PERRYMAN@CRCNATIONWIDE.COM



SALT LAKE CITY FLEX UNIT AVAILABLE FOR LEASE

1745 SOUTH MILESTONE DRIVE, SALT LAKE CITY 84104



This information is given with the understanding that all negotiations and/or real estate activity related to the property described above shall be conducted through this cRc Nationwide office. The above information while not guaranteed, was obtained from sources we believe to be reliable.

CONTACT

801.617.1700

JAMES MERRILL

GAVIN PERRYMAN

JAMES.MERRILL@CRCNATIONWIDE.COM

GAVIN.PERRYMAN@CRCNATIONWIDE.COM