

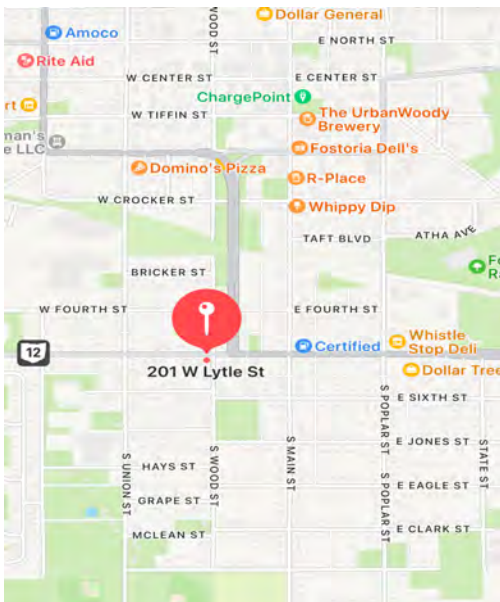
# 201 W Lytle St, Fostoria, OH

\$220,000



Welcome to Fostoria, approximately 40 miles south of Toledo and 90 miles north of Columbus, this Iron Triangle is known for its railroads and glass heritage. Located on the

corner of Lytle and Wood Streets, this property offers plenty of nicely traversed road frontage, almost 9500 square feet of parking, refinished in 2004, and a unique opportunity to have a large chapel/sanctuary with gathering space attached to a 1930 built cape cod. The building offers a main level with Men's and Women's Restrooms, each with two stalls, a kitchen with plenty of storage, sanctuary, office, space currently utilized as a children's learning room, an upstairs level with studio apartment and full bath, and a lower level with half bath. The large sanctuary features a baptismal area and a spacious stage. The large basement has plenty of room for music practice, youth group gatherings, storage, or private focus areas. This property has the potential to meet many needs! Call for more details!



For More Information:

In Partnership With:



Tricia Cash  
The Cash Team  
330.284.3403  
[TriciaCashRealtor@gmail.com](mailto:TriciaCashRealtor@gmail.com)

Lee Black  
Managing Director  
818.657.6539  
[LeeBlack321@outlook.com](mailto:LeeBlack321@outlook.com)

Veronica Seyler  
Associate Director  
818.456.6935  
[VeronicaSeyler@outlook.com](mailto:VeronicaSeyler@outlook.com)



# Parcels:



## Parcel 1

- P51045970420000 (685 E - Churches Etc/Public Worship)  
.177a  
58 ft of road frontage x 133 ft deep  
approx 3000 sqft of grade C parking lot  
approx 2684 sqft of grade D+ church structure

## Parcel 2

- P51045970460000 (685 E - Churches Etc/Public Worship)  
.177a  
58 ft of road frontage x 133 ft deep  
approx 3000 sqft of grade C parking lot  
approx 1215 sqft of D+ capecod building  
mailing address of 205 W Lytle

## Parcel 3

- P51041035880000 (456 C - Parking Garage Structure & Lots)  
.08a  
30 x 16 lot  
approx 3480 sqft of grade C parking lot  
listed as 711 S Wood St.

For More Information:

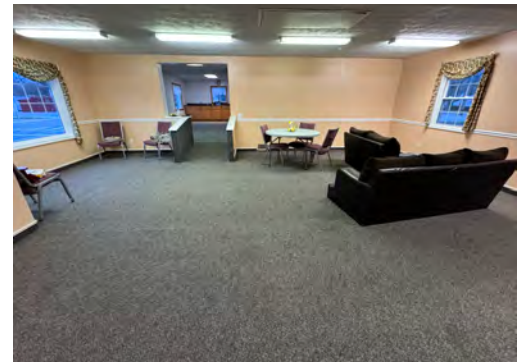
Tricia Cash  
The Cash Team  
330.284.3403  
[TriciaCashRealtor@gmail.com](mailto:TriciaCashRealtor@gmail.com)

In Partnership With:

Lee Black  
Managing Director  
818.657.6539  
[LeeBlack321@outlook.com](mailto:LeeBlack321@outlook.com)

Veronica Seyler  
Associate Director  
818.456.6935  
[VeronicaSeyler@outlook.com](mailto:VeronicaSeyler@outlook.com)





For More Information:

In Partnership With:

Tricia Cash  
The Cash Team  
330.284.3403  
[TriciaCashRealtor@gmail.com](mailto:TriciaCashRealtor@gmail.com)

Lee Black  
Managing Director  
818.657.6539  
[LeeBlack321@outlook.com](mailto:LeeBlack321@outlook.com)

Veronica Seyler  
Associate Director  
818.456.6935  
[VeronicaSeyler@outlook.com](mailto:VeronicaSeyler@outlook.com)

