



# SCOTTSDALE CENTRE

7373 N SCOTTSDALE ROAD  
SCOTTSDALE, AZ

## FACT SHEET

### PROPERTY FEATURES

- **TOTAL BUILDING 163,311 SF**
- New common area, lobbies, and restrooms
- Prominent signage on Scottsdale Road
- Beautiful mountain and golf course views
- Outdoor tenant courtyard
- Direct parking lot and suite access
- Subterranean parking garage
- Property management provided by Cushman & Wakefield



#### BUILDING A

|      |           |
|------|-----------|
| A195 | 3,545 SF  |
| A225 | 2,774 SF* |
| A280 | 1,296 SF  |
| A287 | 3,289 SF* |

\*Contig. to 6,063 SF

#### BUILDING B

|      |           |
|------|-----------|
| B130 | 1,457 SF  |
| B169 | 3,916 SF  |
| B170 | 1,236 SF  |
| B270 | 1,225 SF+ |

+Spec Suite

#### BUILDING C

|      |            |
|------|------------|
| C100 | 2,571 SF   |
| C190 | 2,724 SF*  |
| C240 | 2,803 SF   |
| C250 | 10,858 SF^ |

\*Available with 90 days notice  
^Divisible

#### BUILDING D

|      |            |
|------|------------|
| D100 | 2,023 SF   |
| D102 | 3,500 SF   |
| D200 | 1,831 SF*+ |
| D210 | 2,271 SF*  |
| D225 | 1,690 SF   |

\*Contig. to 4,102 SF  
+Spec Suite

#### BUILDING E

|      |          |
|------|----------|
| E201 | 1,778 SF |
|------|----------|

FOR MEDICAL INQUIRIES PLEASE CONTACT



#### SHEILA BALE

Managing Director  
+1 602 224 4454  
sheila.bale@cushwake.com

#### ERIKA ECKBLAD

Director  
+1 602 224 4451  
erika.eckblad@cushwake.com

FOR OFFICE INQUIRIES PLEASE CONTACT



#### TIM WHITTEMORE

Senior Director  
+1 602 229 5931  
tim.whittemore@cushwake.com

#### PATRICK SCHRIMSHER

Director  
+1 602 468 8529  
patrick.schrimsher@cushwake.com



©2025 Cushman & Wakefield. All rights reserved. The information contained in this communication is strictly confidential. This information has been obtained from sources believed to be reliable but has not been verified. NO WARRANTY OR REPRESENTATION, EXPRESS OR IMPLIED, IS MADE AS TO THE CONDITION OF THE PROPERTY (OR PROPERTIES) REFERENCED HEREIN OR AS TO THE ACCURACY OR COMPLETENESS OF THE INFORMATION CONTAINED HEREIN, AND SAME IS SUBMITTED SUBJECT TO ERRORS, OMISSIONS, CHANGE OF PRICE, RENTAL OR OTHER CONDITIONS, WITHDRAWAL WITHOUT NOTICE, AND TO ANY SPECIAL LISTING CONDITIONS IMPOSED BY THE PROPERTY OWNER(S). ANY PROJECTIONS, OPINIONS OR ESTIMATES ARE SUBJECT TO UNCERTAINTY AND DO NOT SIGNIFY CURRENT OR FUTURE PROPERTY PERFORMANCE. COE-PM-West-11.28.2025

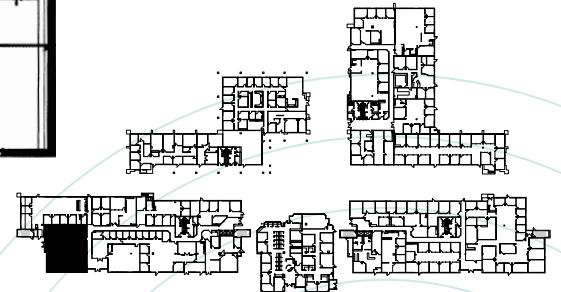
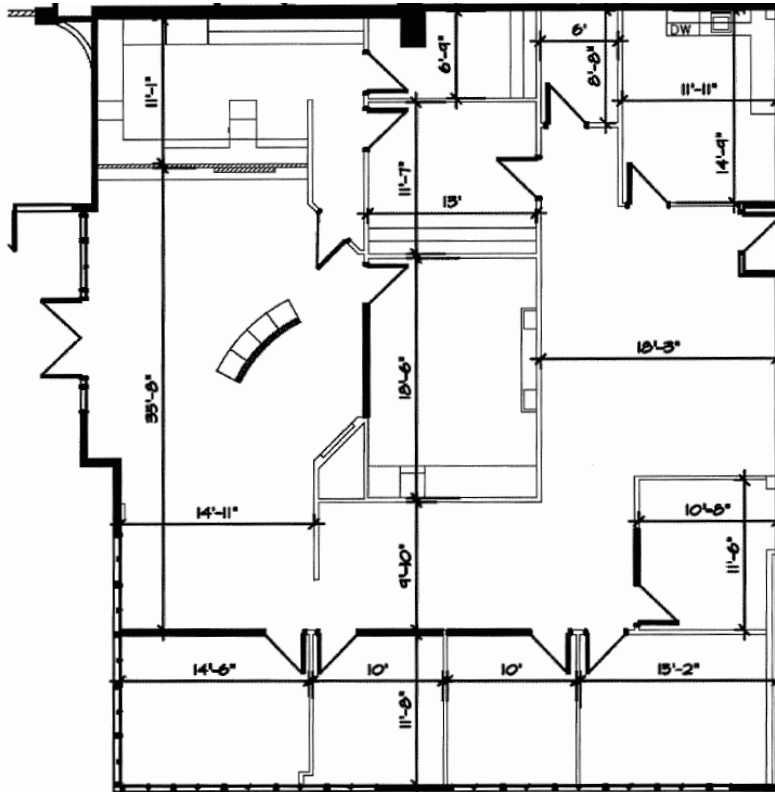


# SCOTTSDALE CENTRE

7373 N SCOTTSDALE ROAD  
SCOTTSDALE, AZ

## SUITE A195

3,545 RSF (AVAILABLE 5/1/26)



FOR MEDICAL INQUIRIES PLEASE CONTACT



### SHEILA BALE

Managing Director  
+1 602 224 4454  
sheila.bale@cushwake.com

### ERIKA ECKBLAD

Director  
+1 602 224 4451  
erika.eckblad@cushwake.com

FOR OFFICE INQUIRIES PLEASE CONTACT



### TIM WHITTEMORE

Senior Director  
+1 602 229 5931  
tim.whittemore@cushwake.com

### PATRICK SCHRIMSHER

Director  
+1 602 468 8529  
patrick.schrimsher@cushwake.com



©2025 Cushman & Wakefield. All rights reserved. The information contained in this communication is strictly confidential. This information has been obtained from sources believed to be reliable but has not been verified. NO WARRANTY OR REPRESENTATION, EXPRESS OR IMPLIED, IS MADE AS TO THE CONDITION OF THE PROPERTY (OR PROPERTIES) REFERENCED HEREIN OR AS TO THE ACCURACY OR COMPLETENESS OF THE INFORMATION CONTAINED HEREIN, AND SAME IS SUBMITTED SUBJECT TO ERRORS, OMISSIONS, CHANGE OF PRICE, RENTAL OR OTHER CONDITIONS, WITHDRAWAL WITHOUT NOTICE, AND TO ANY SPECIAL LISTING CONDITIONS IMPOSED BY THE PROPERTY OWNER(S). ANY PROJECTIONS, OPINIONS OR ESTIMATES ARE SUBJECT TO UNCERTAINTY AND DO NOT SIGNIFY CURRENT OR FUTURE PROPERTY PERFORMANCE. COE-PM-West-11.28.2025

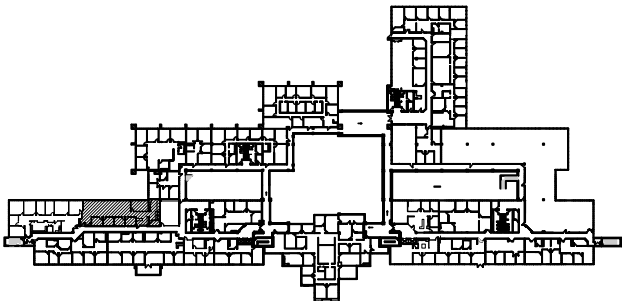
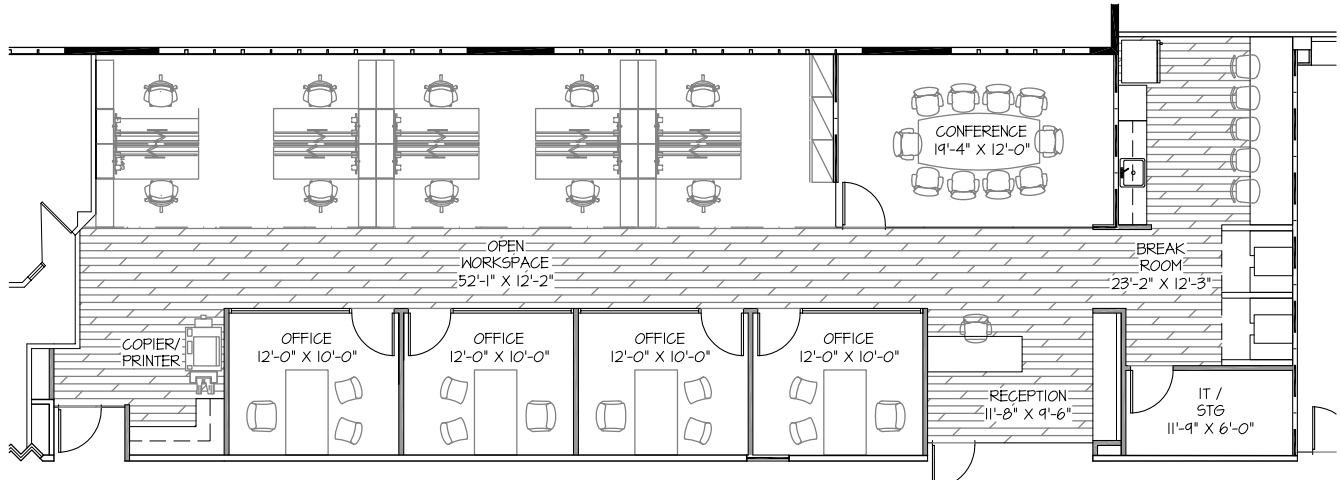


**SCOTTSDALE**  
CENTRE

7373 N SCOTTSDALE ROAD  
SCOTTSDALE, AZ

## SUITE A225

2,774 RSF (HYPOTHETICAL SPEC SUITE)



FOR MEDICAL INQUIRIES PLEASE CONTACT



### SHEILA BALE

Managing Director  
+1 602 224 4454  
sheila.bale@cushwake.com

### ERIKA ECKBLAD

Director  
+1 602 224 4451  
erika.eckblad@cushwake.com

FOR OFFICE INQUIRIES PLEASE CONTACT



### TIM WHITTEMORE

Senior Director  
+1 602 229 5931  
tim.whittemore@cushwake.com

### PATRICK SCHRIMSHER

Director  
+1 602 468 8529  
patrick.schrimsher@cushwake.com



©2025 Cushman & Wakefield. All rights reserved. The information contained in this communication is strictly confidential. This information has been obtained from sources believed to be reliable but has not been verified. NO WARRANTY OR REPRESENTATION, EXPRESS OR IMPLIED, IS MADE AS TO THE CONDITION OF THE PROPERTY (OR PROPERTIES) REFERENCED HEREIN OR AS TO THE ACCURACY OR COMPLETENESS OF THE INFORMATION CONTAINED HEREIN, AND SAME IS SUBMITTED SUBJECT TO ERRORS, OMISSIONS, CHANGE OF PRICE, RENTAL OR OTHER CONDITIONS, WITHDRAWAL WITHOUT NOTICE, AND TO ANY SPECIAL LISTING CONDITIONS IMPOSED BY THE PROPERTY OWNER(S). ANY PROJECTIONS, OPINIONS OR ESTIMATES ARE SUBJECT TO UNCERTAINTY AND DO NOT SIGNIFY CURRENT OR FUTURE PROPERTY PERFORMANCE. COE-PM-West-11.28.2025

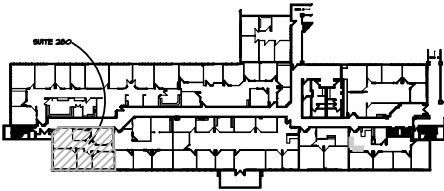
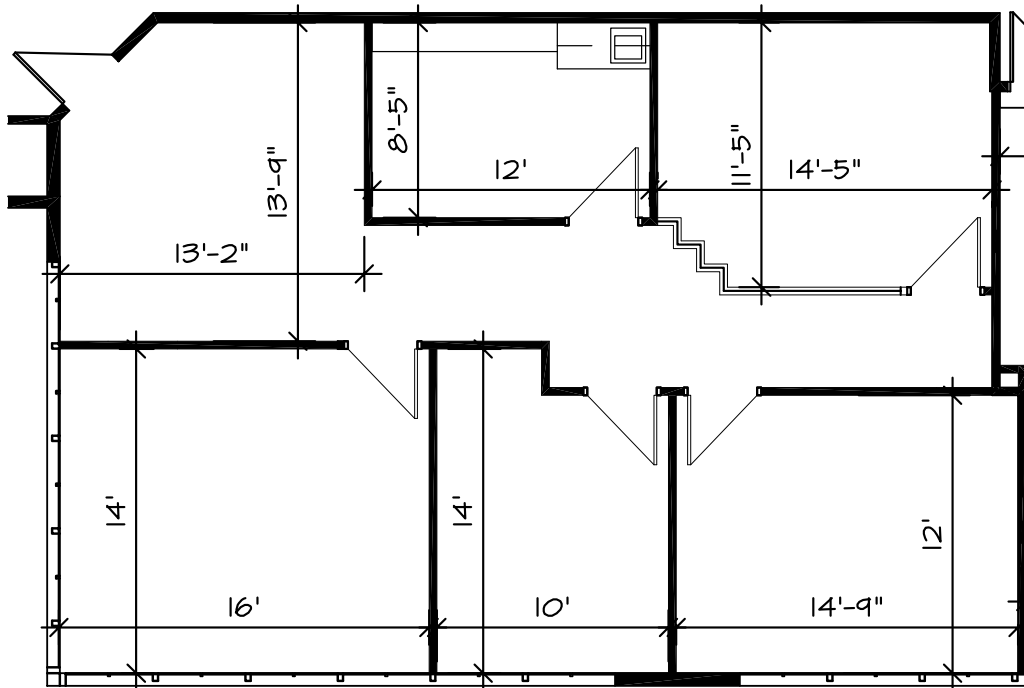


**SCOTTSDALE**  
CENTRE

7373 N SCOTTSDALE ROAD  
SCOTTSDALE, AZ

## SUITE A280

1,296 RSF



FOR MEDICAL INQUIRIES PLEASE CONTACT



### SHEILA BALE

Managing Director  
+1 602 224 4454  
sheila.bale@cushwake.com

### ERIKA ECKBLAD

Director  
+1 602 224 4451  
erika.eckblad@cushwake.com

FOR OFFICE INQUIRIES PLEASE CONTACT



### TIM WHITTEMORE

Senior Director  
+1 602 229 5931  
tim.whittemore@cushwake.com

### PATRICK SCHRIMSHER

Director  
+1 602 468 8529  
patrick.schrimsher@cushwake.com



©2025 Cushman & Wakefield. All rights reserved. The information contained in this communication is strictly confidential. This information has been obtained from sources believed to be reliable but has not been verified. NO WARRANTY OR REPRESENTATION, EXPRESS OR IMPLIED, IS MADE AS TO THE CONDITION OF THE PROPERTY (OR PROPERTIES) REFERENCED HEREIN OR AS TO THE ACCURACY OR COMPLETENESS OF THE INFORMATION CONTAINED HEREIN, AND SAME IS SUBMITTED SUBJECT TO ERRORS, OMISSIONS, CHANGE OF PRICE, RENTAL OR OTHER CONDITIONS, WITHDRAWAL WITHOUT NOTICE, AND TO ANY SPECIAL LISTING CONDITIONS IMPOSED BY THE PROPERTY OWNER(S). ANY PROJECTIONS, OPINIONS OR ESTIMATES ARE SUBJECT TO UNCERTAINTY AND DO NOT SIGNIFY CURRENT OR FUTURE PROPERTY PERFORMANCE. COE-PM-West-11.28.2025

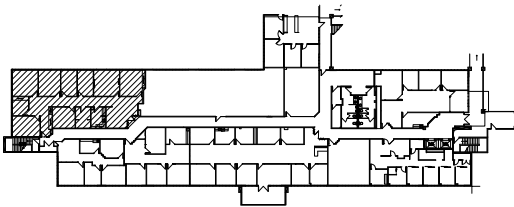
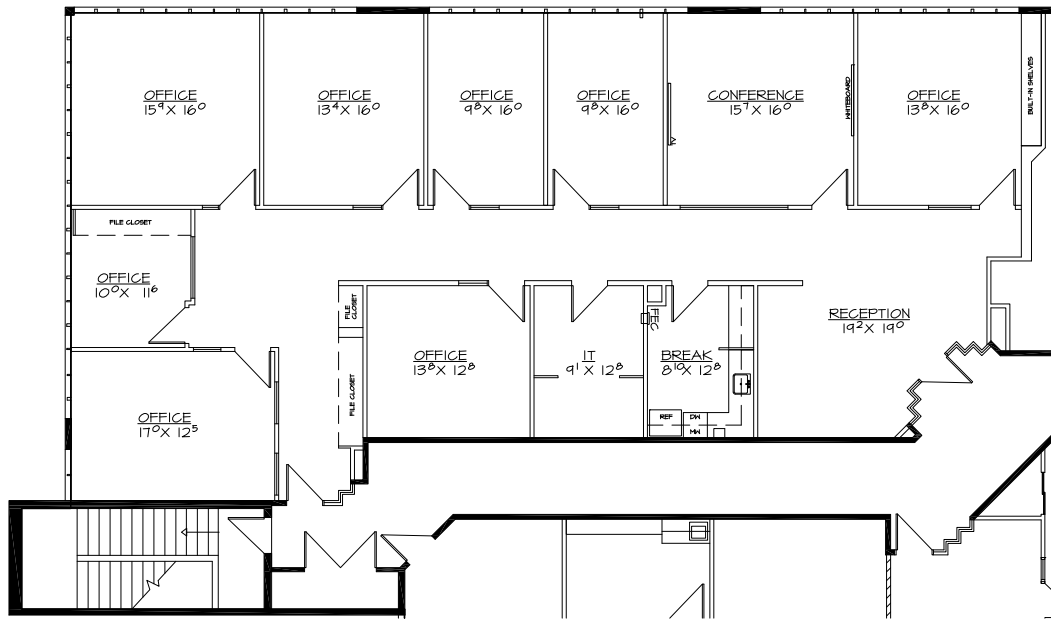


# SCOTTSDALE CENTRE

7373 N SCOTTSDALE ROAD  
SCOTTSDALE, AZ

## SUITE A287

3,289 RSF



FOR MEDICAL INQUIRIES PLEASE CONTACT



### SHEILA BALE

Managing Director  
+1 602 224 4454  
sheila.bale@cushwake.com

### ERIKA ECKBLAD

Director  
+1 602 224 4451  
erika.eckblad@cushwake.com

FOR OFFICE INQUIRIES PLEASE CONTACT



### TIM WHITTEMORE

Senior Director  
+1 602 229 5931  
tim.whittemore@cushwake.com

### PATRICK SCHRIMSHER

Director  
+1 602 468 8529  
patrick.schrimsher@cushwake.com



©2025 Cushman & Wakefield. All rights reserved. The information contained in this communication is strictly confidential. This information has been obtained from sources believed to be reliable but has not been verified. NO WARRANTY OR REPRESENTATION, EXPRESS OR IMPLIED, IS MADE AS TO THE CONDITION OF THE PROPERTY (OR PROPERTIES) REFERENCED HEREIN OR AS TO THE ACCURACY OR COMPLETENESS OF THE INFORMATION CONTAINED HEREIN, AND SAME IS SUBMITTED SUBJECT TO ERRORS, OMISSIONS, CHANGE OF PRICE, RENTAL OR OTHER CONDITIONS, WITHDRAWAL WITHOUT NOTICE, AND TO ANY SPECIAL LISTING CONDITIONS IMPOSED BY THE PROPERTY OWNER(S). ANY PROJECTIONS, OPINIONS OR ESTIMATES ARE SUBJECT TO UNCERTAINTY AND DO NOT SIGNIFY CURRENT OR FUTURE PROPERTY PERFORMANCE. COE-PM-West-11.28.2025

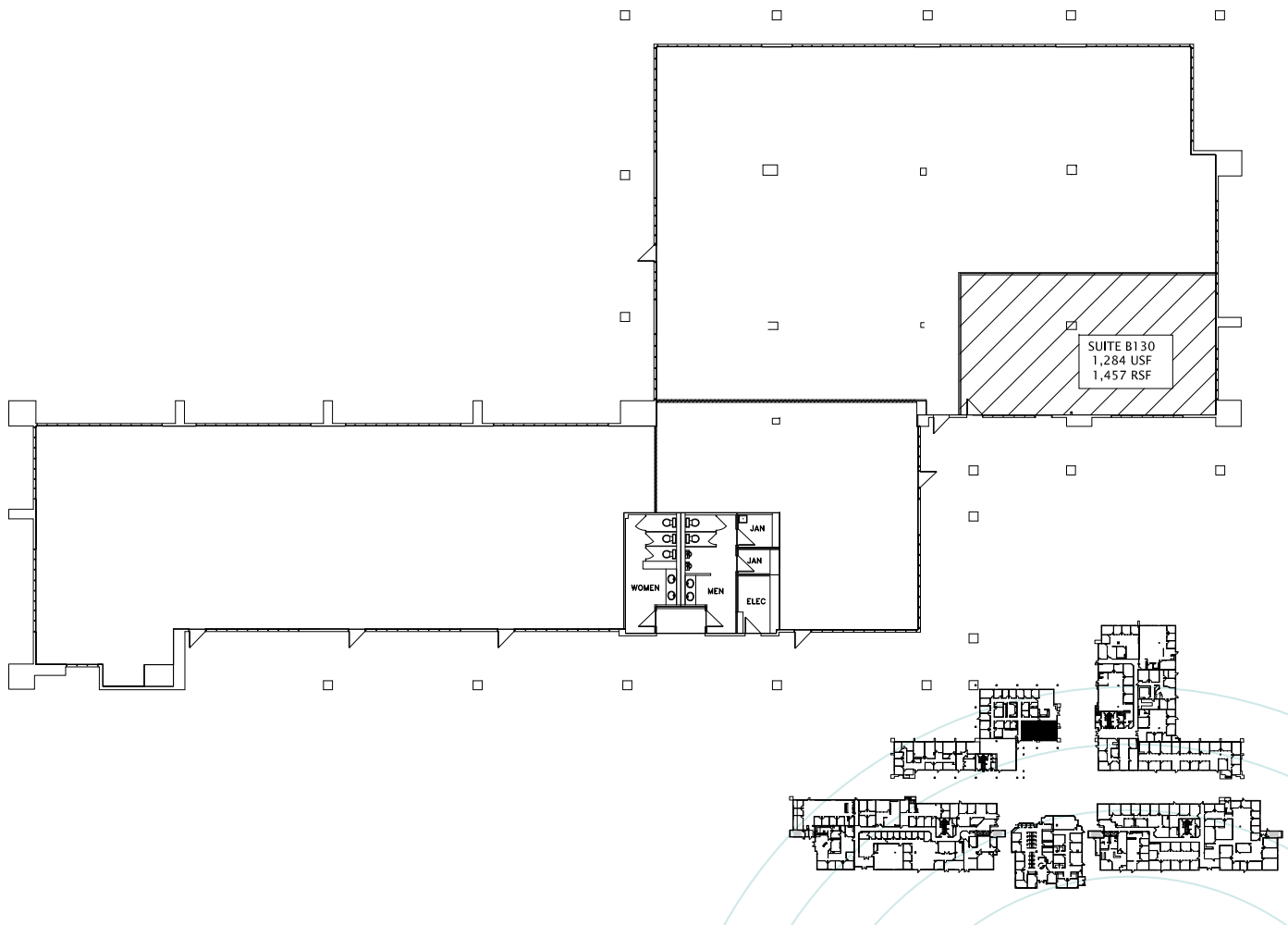


# SCOTTSDALE CENTRE

7373 N SCOTTSDALE ROAD  
SCOTTSDALE, AZ

## SUITE B130

1,457 RSF



FOR MEDICAL INQUIRIES PLEASE CONTACT



### SHEILA BALE

Managing Director  
+1 602 224 4454  
sheila.bale@cushwake.com

### ERIKA ECKBLAD

Director  
+1 602 224 4451  
erika.eckblad@cushwake.com

FOR OFFICE INQUIRIES PLEASE CONTACT



### TIM WHITTEMORE

Senior Director  
+1 602 229 5931  
tim.whittemore@cushwake.com

### PATRICK SCHRIMSHER

Director  
+1 602 468 8529  
patrick.schrimsher@cushwake.com



©2025 Cushman & Wakefield. All rights reserved. The information contained in this communication is strictly confidential. This information has been obtained from sources believed to be reliable but has not been verified. NO WARRANTY OR REPRESENTATION, EXPRESS OR IMPLIED, IS MADE AS TO THE CONDITION OF THE PROPERTY (OR PROPERTIES) REFERENCED HEREIN OR AS TO THE ACCURACY OR COMPLETENESS OF THE INFORMATION CONTAINED HEREIN, AND SAME IS SUBMITTED SUBJECT TO ERRORS, OMISSIONS, CHANGE OF PRICE, RENTAL OR OTHER CONDITIONS, WITHDRAWAL WITHOUT NOTICE, AND TO ANY SPECIAL LISTING CONDITIONS IMPOSED BY THE PROPERTY OWNER(S). ANY PROJECTIONS, OPINIONS OR ESTIMATES ARE SUBJECT TO UNCERTAINTY AND DO NOT SIGNIFY CURRENT OR FUTURE PROPERTY PERFORMANCE. COE-PM-West-11.28.2025

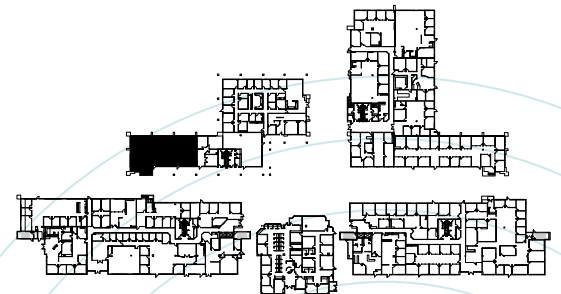
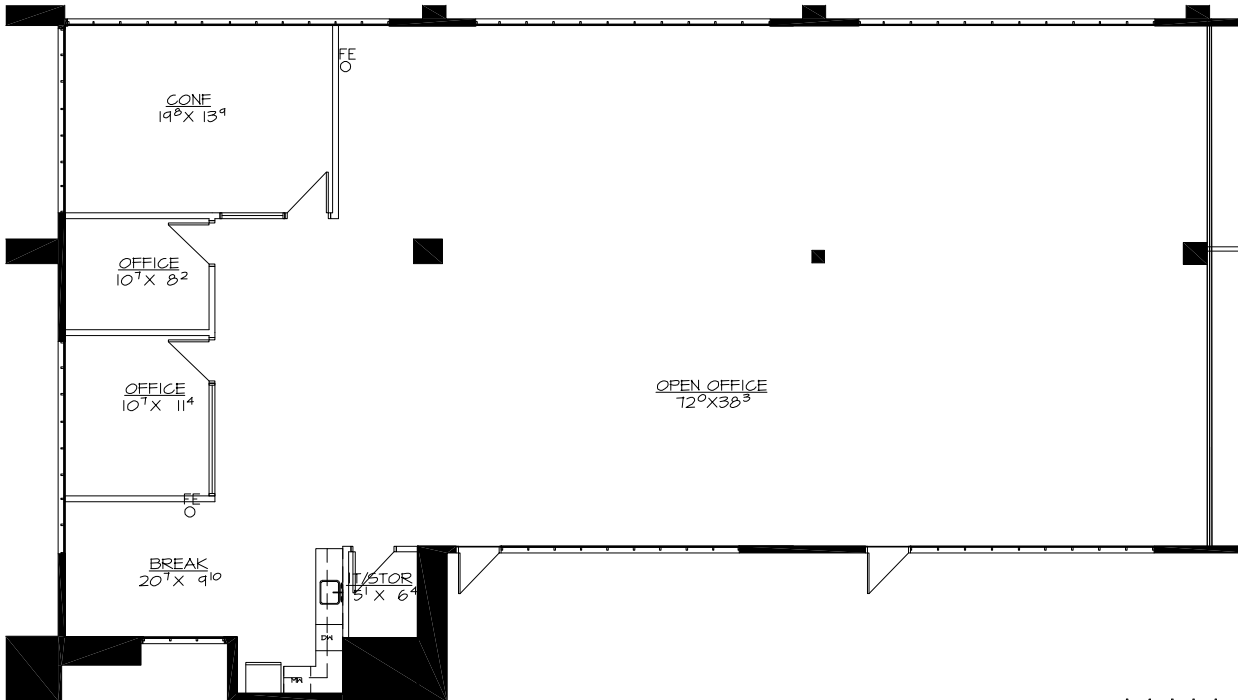


# SCOTTSDALE CENTRE

7373 N SCOTTSDALE ROAD  
SCOTTSDALE, AZ

## SUITE B169

3,916 RSF



FOR MEDICAL INQUIRIES PLEASE CONTACT



### SHEILA BALE

Managing Director  
+1 602 224 4454  
sheila.bale@cushwake.com

### ERIKA ECKBLAD

Director  
+1 602 224 4451  
erika.eckblad@cushwake.com

FOR OFFICE INQUIRIES PLEASE CONTACT



### TIM WHITEMORE

Senior Director  
+1 602 229 5931  
tim.whittemore@cushwake.com

### PATRICK SCHRIMSHER

Director  
+1 602 468 8529  
patrick.schrimsher@cushwake.com



©2025 Cushman & Wakefield. All rights reserved. The information contained in this communication is strictly confidential. This information has been obtained from sources believed to be reliable but has not been verified. NO WARRANTY OR REPRESENTATION, EXPRESS OR IMPLIED, IS MADE AS TO THE CONDITION OF THE PROPERTY (OR PROPERTIES) REFERENCED HEREIN OR AS TO THE ACCURACY OR COMPLETENESS OF THE INFORMATION CONTAINED HEREIN, AND SAME IS SUBMITTED SUBJECT TO ERRORS, OMISSIONS, CHANGE OF PRICE, RENTAL OR OTHER CONDITIONS, WITHDRAWAL WITHOUT NOTICE, AND TO ANY SPECIAL LISTING CONDITIONS IMPOSED BY THE PROPERTY OWNER(S). ANY PROJECTIONS, OPINIONS OR ESTIMATES ARE SUBJECT TO UNCERTAINTY AND DO NOT SIGNIFY CURRENT OR FUTURE PROPERTY PERFORMANCE. COE-PM-West-11.28.2025

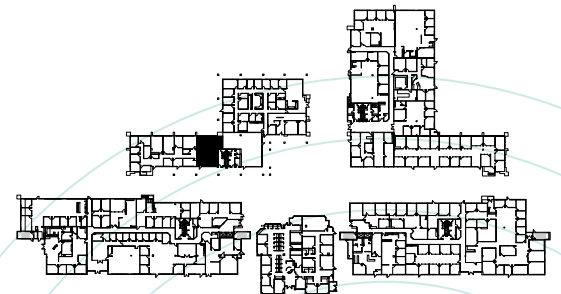
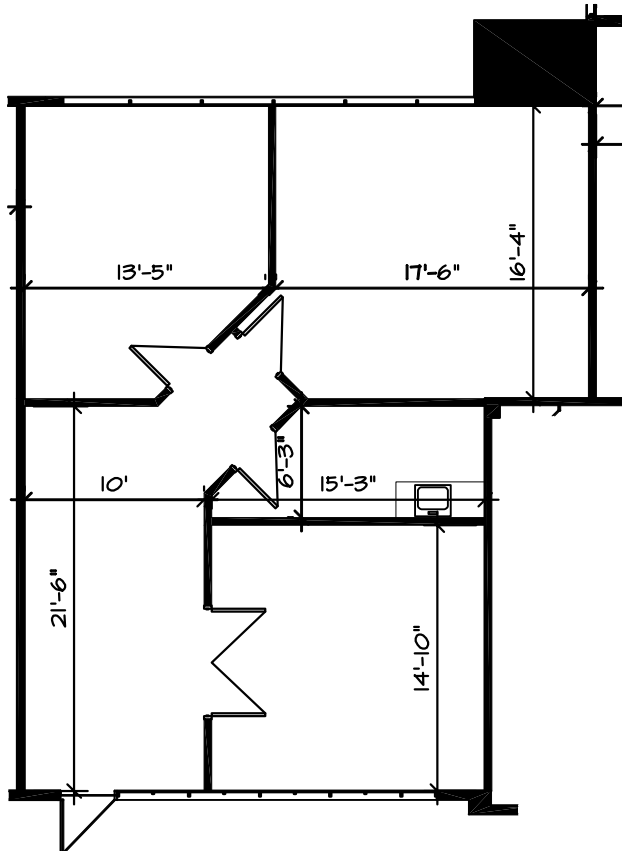


# SCOTTSDALE CENTRE

7373 N SCOTTSDALE ROAD  
SCOTTSDALE, AZ

## SUITE B170

1,236 RSF



FOR MEDICAL INQUIRIES PLEASE CONTACT



### SHEILA BALE

Managing Director  
+1 602 224 4454  
sheila.bale@cushwake.com

### ERIKA ECKBLAD

Director  
+1 602 224 4451  
erika.eckblad@cushwake.com

FOR OFFICE INQUIRIES PLEASE CONTACT



### TIM WHITTEMORE

Senior Director  
+1 602 229 5931  
tim.whittemore@cushwake.com

### PATRICK SCHRIMSHER

Director  
+1 602 468 8529  
patrick.schrimsher@cushwake.com



©2025 Cushman & Wakefield. All rights reserved. The information contained in this communication is strictly confidential. This information has been obtained from sources believed to be reliable but has not been verified. NO WARRANTY OR REPRESENTATION, EXPRESS OR IMPLIED, IS MADE AS TO THE CONDITION OF THE PROPERTY (OR PROPERTIES) REFERENCED HEREIN OR AS TO THE ACCURACY OR COMPLETENESS OF THE INFORMATION CONTAINED HEREIN, AND SAME IS SUBMITTED SUBJECT TO ERRORS, OMISSIONS, CHANGE OF PRICE, RENTAL OR OTHER CONDITIONS, WITHDRAWAL WITHOUT NOTICE, AND TO ANY SPECIAL LISTING CONDITIONS IMPOSED BY THE PROPERTY OWNER(S). ANY PROJECTIONS, OPINIONS OR ESTIMATES ARE SUBJECT TO UNCERTAINTY AND DO NOT SIGNIFY CURRENT OR FUTURE PROPERTY PERFORMANCE. COE-PM-West-11.28.2025



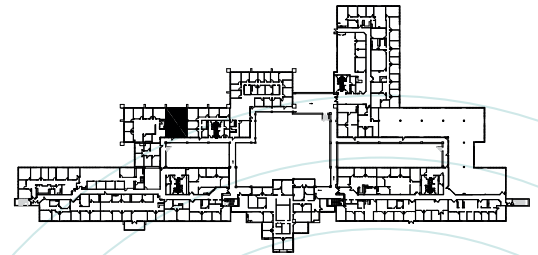
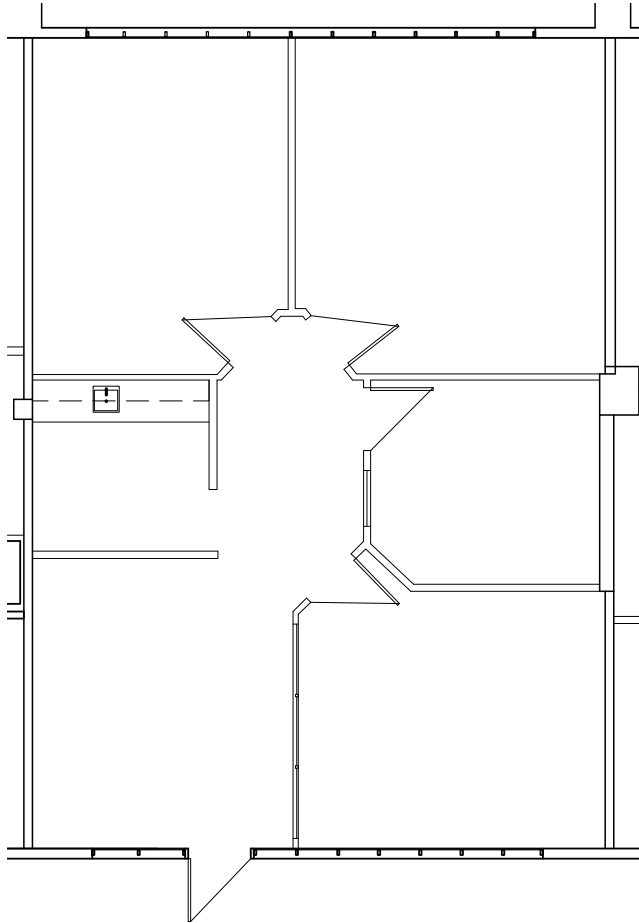


# SCOTTSDALE CENTRE

7373 N SCOTTSDALE ROAD  
SCOTTSDALE, AZ

## SUITE B270

1,225 RSF | SPEC SUITE



FOR MEDICAL INQUIRIES PLEASE CONTACT



### SHEILA BALE

Managing Director  
+1 602 224 4454  
sheila.bale@cushwake.com

### ERIKA ECKBLAD

Director  
+1 602 224 4451  
erika.eckblad@cushwake.com

FOR OFFICE INQUIRIES PLEASE CONTACT



### TIM WHITTEMORE

Senior Director  
+1 602 229 5931  
tim.whittemore@cushwake.com

### PATRICK SCHRIMSHER

Director  
+1 602 468 8529  
patrick.schrimsher@cushwake.com



©2025 Cushman & Wakefield. All rights reserved. The information contained in this communication is strictly confidential. This information has been obtained from sources believed to be reliable but has not been verified. NO WARRANTY OR REPRESENTATION, EXPRESS OR IMPLIED, IS MADE AS TO THE CONDITION OF THE PROPERTY (OR PROPERTIES) REFERENCED HEREIN OR AS TO THE ACCURACY OR COMPLETENESS OF THE INFORMATION CONTAINED HEREIN, AND SAME IS SUBMITTED SUBJECT TO ERRORS, OMISSIONS, CHANGE OF PRICE, RENTAL OR OTHER CONDITIONS, WITHDRAWAL WITHOUT NOTICE, AND TO ANY SPECIAL LISTING CONDITIONS IMPOSED BY THE PROPERTY OWNER(S). ANY PROJECTIONS, OPINIONS OR ESTIMATES ARE SUBJECT TO UNCERTAINTY AND DO NOT SIGNIFY CURRENT OR FUTURE PROPERTY PERFORMANCE. COE-PM-West-11.28.2025

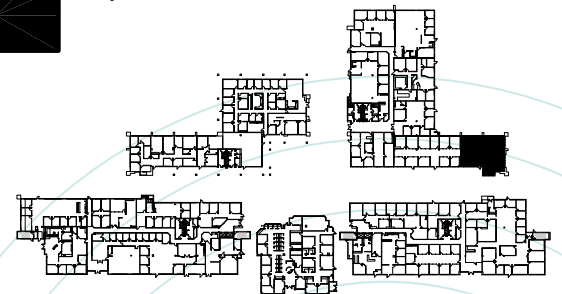
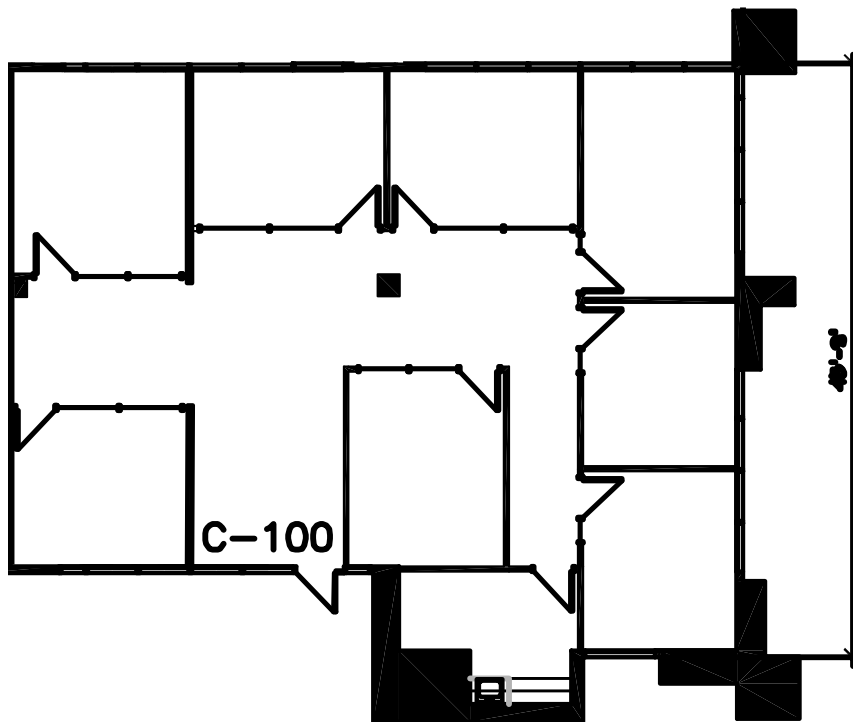


# SCOTTSDALE CENTRE

7373 N SCOTTSDALE ROAD  
SCOTTSDALE, AZ

## SUITE C100

2,571 RSF



FOR MEDICAL INQUIRIES PLEASE CONTACT



### SHEILA BALE

Managing Director  
+1 602 224 4454  
sheila.bale@cushwake.com

### ERIKA ECKBLAD

Director  
+1 602 224 4451  
erika.eckblad@cushwake.com

FOR OFFICE INQUIRIES PLEASE CONTACT



### TIM WHITTEMORE

Senior Director  
+1 602 229 5931  
tim.whittemore@cushwake.com

### PATRICK SCHRIMSHER

Director  
+1 602 468 8529  
patrick.schrimsher@cushwake.com



©2025 Cushman & Wakefield. All rights reserved. The information contained in this communication is strictly confidential. This information has been obtained from sources believed to be reliable but has not been verified. NO WARRANTY OR REPRESENTATION, EXPRESS OR IMPLIED, IS MADE AS TO THE CONDITION OF THE PROPERTY (OR PROPERTIES) REFERENCED HEREIN OR AS TO THE ACCURACY OR COMPLETENESS OF THE INFORMATION CONTAINED HEREIN, AND SAME IS SUBMITTED SUBJECT TO ERRORS, OMISSIONS, CHANGE OF PRICE, RENTAL OR OTHER CONDITIONS, WITHDRAWAL WITHOUT NOTICE, AND TO ANY SPECIAL LISTING CONDITIONS IMPOSED BY THE PROPERTY OWNER(S). ANY PROJECTIONS, OPINIONS OR ESTIMATES ARE SUBJECT TO UNCERTAINTY AND DO NOT SIGNIFY CURRENT OR FUTURE PROPERTY PERFORMANCE. COE-PM-West-11.28.2025

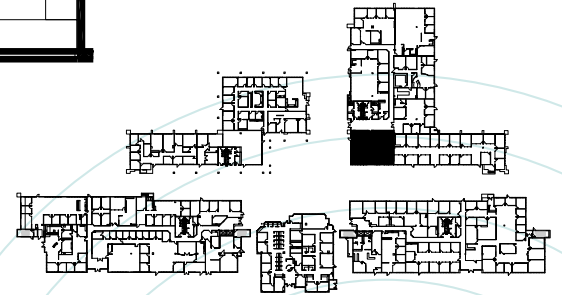
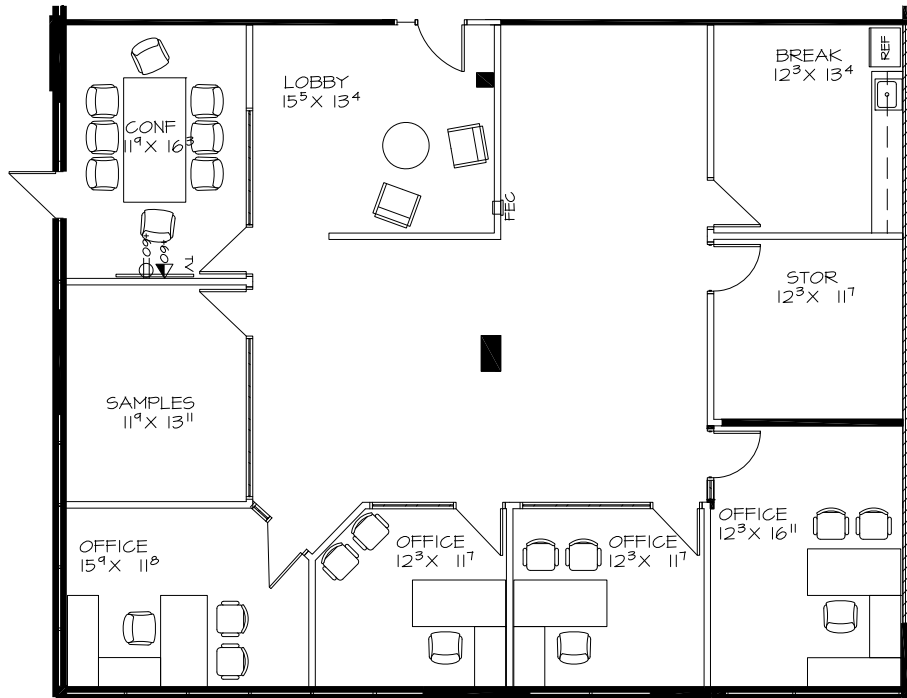


# SCOTTSDALE CENTRE

7373 N SCOTTSDALE ROAD  
SCOTTSDALE, AZ

## SUITE C140

2,633 RSF



FOR MEDICAL INQUIRIES PLEASE CONTACT



### SHEILA BALE

Managing Director  
+1 602 224 4454  
sheila.bale@cushwake.com

### ERIKA ECKBLAD

Director  
+1 602 224 4451  
erika.eckblad@cushwake.com

FOR OFFICE INQUIRIES PLEASE CONTACT



### TIM WHITTEMORE

Senior Director  
+1 602 229 5931  
tim.whittemore@cushwake.com

### PATRICK SCHRIMSHER

Director  
+1 602 468 8529  
patrick.schrimsher@cushwake.com



©2025 Cushman & Wakefield. All rights reserved. The information contained in this communication is strictly confidential. This information has been obtained from sources believed to be reliable but has not been verified. NO WARRANTY OR REPRESENTATION, EXPRESS OR IMPLIED, IS MADE AS TO THE CONDITION OF THE PROPERTY (OR PROPERTIES) REFERENCED HEREIN OR AS TO THE ACCURACY OR COMPLETENESS OF THE INFORMATION CONTAINED HEREIN, AND SAME IS SUBMITTED SUBJECT TO ERRORS, OMISSIONS, CHANGE OF PRICE, RENTAL OR OTHER CONDITIONS, WITHDRAWAL WITHOUT NOTICE, AND TO ANY SPECIAL LISTING CONDITIONS IMPOSED BY THE PROPERTY OWNER(S). ANY PROJECTIONS, OPINIONS OR ESTIMATES ARE SUBJECT TO UNCERTAINTY AND DO NOT SIGNIFY CURRENT OR FUTURE PROPERTY PERFORMANCE. COE-PM-West-11.28.2025

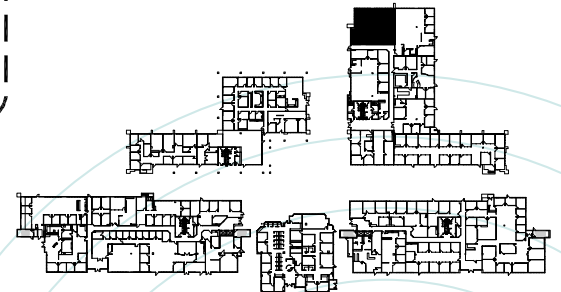
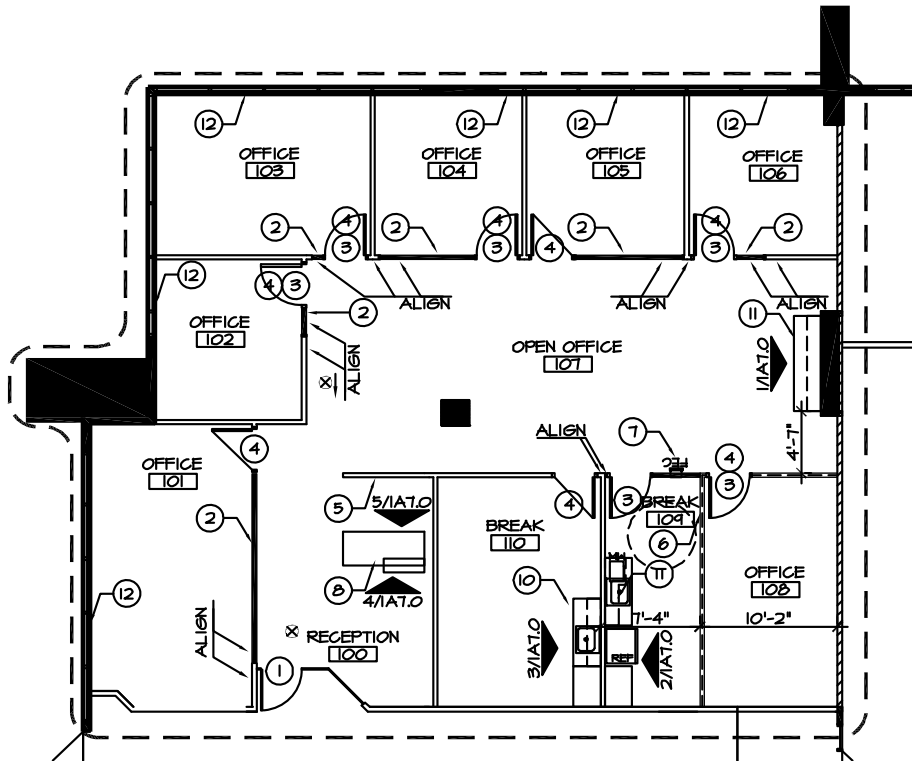


# SCOTTSDALE CENTRE

7373 N SCOTTSDALE ROAD  
SCOTTSDALE, AZ

## SUITE C190

2,724 RSF



FOR MEDICAL INQUIRIES PLEASE CONTACT



### SHEILA BALE

Managing Director  
+1 602 224 4454  
sheila.bale@cushwake.com

### ERIKA ECKBLAD

Director  
+1 602 224 4451  
erika.eckblad@cushwake.com

FOR OFFICE INQUIRIES PLEASE CONTACT



### TIM WHITTEMORE

Senior Director  
+1 602 229 5931  
tim.whittemore@cushwake.com

### PATRICK SCHRIMSHER

Director  
+1 602 468 8529  
patrick.schrimsher@cushwake.com



©2025 Cushman & Wakefield. All rights reserved. The information contained in this communication is strictly confidential. This information has been obtained from sources believed to be reliable but has not been verified. NO WARRANTY OR REPRESENTATION, EXPRESS OR IMPLIED, IS MADE AS TO THE CONDITION OF THE PROPERTY (OR PROPERTIES) REFERENCED HEREIN OR AS TO THE ACCURACY OR COMPLETENESS OF THE INFORMATION CONTAINED HEREIN, AND SAME IS SUBMITTED SUBJECT TO ERRORS, OMISSIONS, CHANGE OF PRICE, RENTAL OR OTHER CONDITIONS, WITHDRAWAL WITHOUT NOTICE, AND TO ANY SPECIAL LISTING CONDITIONS IMPOSED BY THE PROPERTY OWNER(S). ANY PROJECTIONS, OPINIONS OR ESTIMATES ARE SUBJECT TO UNCERTAINTY AND DO NOT SIGNIFY CURRENT OR FUTURE PROPERTY PERFORMANCE. COE-PM-West-11.28.2025



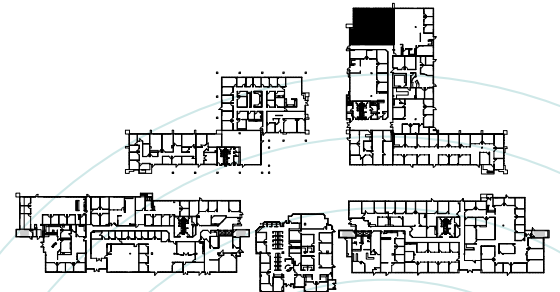
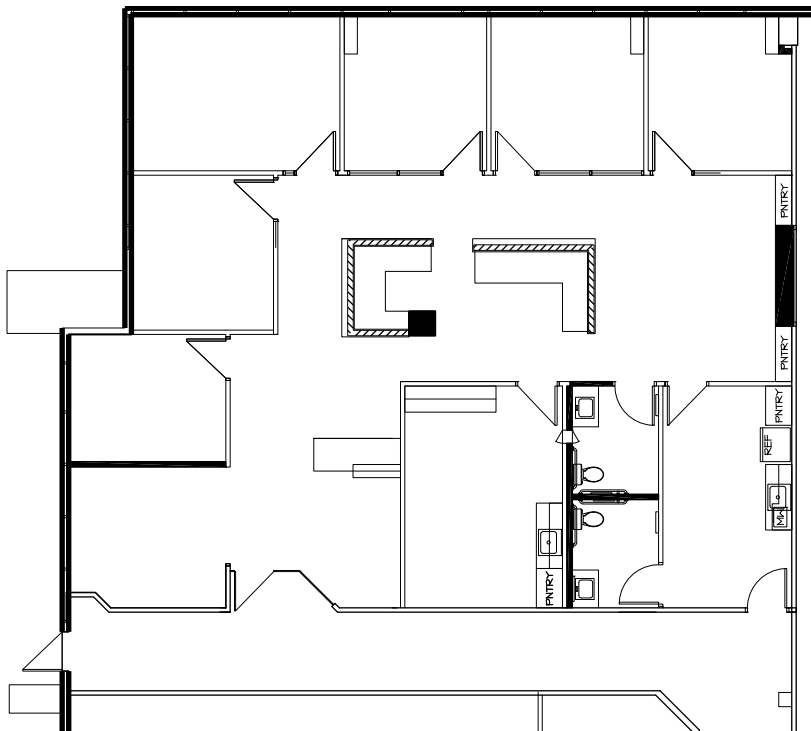
**SCOTTSDALE**  
CENTRE

7373 N SCOTTSDALE ROAD  
SCOTTSDALE, AZ

## SUITE C190

2,724 RSF

(Proposed Medical Modification)



FOR MEDICAL INQUIRIES PLEASE CONTACT



### SHEILA BALE

Managing Director  
+1 602 224 4454  
sheila.bale@cushwake.com

### ERIKA ECKBLAD

Director  
+1 602 224 4451  
erika.eckblad@cushwake.com

FOR OFFICE INQUIRIES PLEASE CONTACT



### TIM WHITTEMORE

Senior Director  
+1 602 229 5931  
tim.whittemore@cushwake.com

### PATRICK SCHRIMSHER

Director  
+1 602 468 8529  
patrick.schrimsher@cushwake.com



©2025 Cushman & Wakefield. All rights reserved. The information contained in this communication is strictly confidential. This information has been obtained from sources believed to be reliable but has not been verified. NO WARRANTY OR REPRESENTATION, EXPRESS OR IMPLIED, IS MADE AS TO THE CONDITION OF THE PROPERTY (OR PROPERTIES) REFERENCED HEREIN OR AS TO THE ACCURACY OR COMPLETENESS OF THE INFORMATION CONTAINED HEREIN, AND SAME IS SUBMITTED SUBJECT TO ERRORS, OMISSIONS, CHANGE OF PRICE, RENTAL OR OTHER CONDITIONS, WITHDRAWAL WITHOUT NOTICE, AND TO ANY SPECIAL LISTING CONDITIONS IMPOSED BY THE PROPERTY OWNER(S). ANY PROJECTIONS, OPINIONS OR ESTIMATES ARE SUBJECT TO UNCERTAINTY AND DO NOT SIGNIFY CURRENT OR FUTURE PROPERTY PERFORMANCE. COE-PM-West-11.28.2025

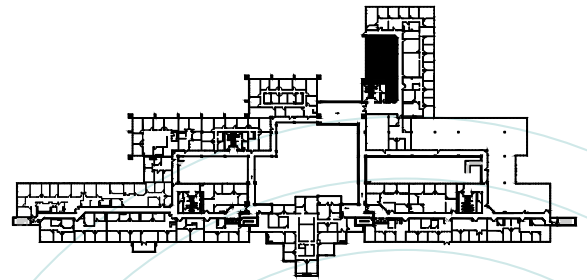
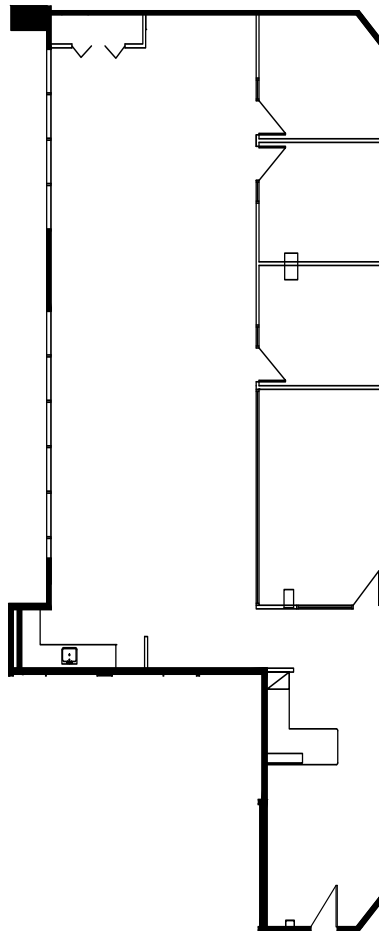


# SCOTTSDALE CENTRE

7373 N SCOTTSDALE ROAD  
SCOTTSDALE, AZ

## SUITE C240

2,803 RSF



FOR MEDICAL INQUIRIES PLEASE CONTACT



### SHEILA BALE

Managing Director  
+1 602 224 4454  
sheila.bale@cushwake.com

### ERIKA ECKBLAD

Director  
+1 602 224 4451  
erika.eckblad@cushwake.com

FOR OFFICE INQUIRIES PLEASE CONTACT



### TIM WHITTEMORE

Senior Director  
+1 602 229 5931  
tim.whittemore@cushwake.com

### PATRICK SCHRIMSHER

Director  
+1 602 468 8529  
patrick.schrimsher@cushwake.com



©2025 Cushman & Wakefield. All rights reserved. The information contained in this communication is strictly confidential. This information has been obtained from sources believed to be reliable but has not been verified. NO WARRANTY OR REPRESENTATION, EXPRESS OR IMPLIED, IS MADE AS TO THE CONDITION OF THE PROPERTY (OR PROPERTIES) REFERENCED HEREIN OR AS TO THE ACCURACY OR COMPLETENESS OF THE INFORMATION CONTAINED HEREIN, AND SAME IS SUBMITTED SUBJECT TO ERRORS, OMISSIONS, CHANGE OF PRICE, RENTAL OR OTHER CONDITIONS, WITHDRAWAL WITHOUT NOTICE, AND TO ANY SPECIAL LISTING CONDITIONS IMPOSED BY THE PROPERTY OWNER(S). ANY PROJECTIONS, OPINIONS OR ESTIMATES ARE SUBJECT TO UNCERTAINTY AND DO NOT SIGNIFY CURRENT OR FUTURE PROPERTY PERFORMANCE. COE-PM-West-11.28.2025

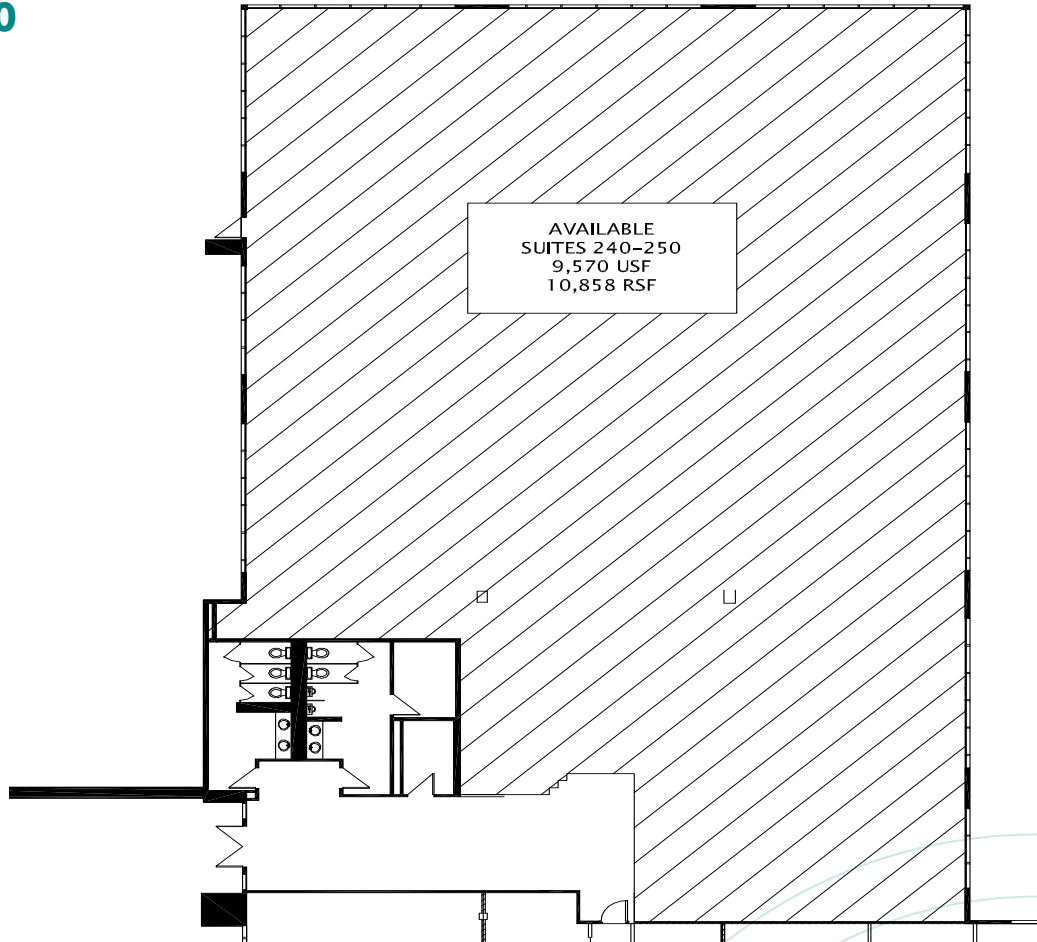


**SCOTTSDALE**  
CENTRE

7373 N SCOTTSDALE ROAD  
SCOTTSDALE, AZ

## SUITE C250

10,858 RSF



FOR MEDICAL INQUIRIES PLEASE CONTACT



### SHEILA BALE

Managing Director  
+1 602 224 4454  
sheila.bale@cushwake.com

### ERIKA ECKBLAD

Director  
+1 602 224 4451  
erika.eckblad@cushwake.com

FOR OFFICE INQUIRIES PLEASE CONTACT



### TIM WHITTEMORE

Senior Director  
+1 602 229 5931  
tim.whittemore@cushwake.com

### PATRICK SCHRIMSHER

Director  
+1 602 468 8529  
patrick.schrimsher@cushwake.com



©2025 Cushman & Wakefield. All rights reserved. The information contained in this communication is strictly confidential. This information has been obtained from sources believed to be reliable but has not been verified. NO WARRANTY OR REPRESENTATION, EXPRESS OR IMPLIED, IS MADE AS TO THE CONDITION OF THE PROPERTY (OR PROPERTIES) REFERENCED HEREIN OR AS TO THE ACCURACY OR COMPLETENESS OF THE INFORMATION CONTAINED HEREIN, AND SAME IS SUBMITTED SUBJECT TO ERRORS, OMISSIONS, CHANGE OF PRICE, RENTAL OR OTHER CONDITIONS, WITHDRAWAL WITHOUT NOTICE, AND TO ANY SPECIAL LISTING CONDITIONS IMPOSED BY THE PROPERTY OWNER(S). ANY PROJECTIONS, OPINIONS OR ESTIMATES ARE SUBJECT TO UNCERTAINTY AND DO NOT SIGNIFY CURRENT OR FUTURE PROPERTY PERFORMANCE. COE-PM-West-11.28.2025

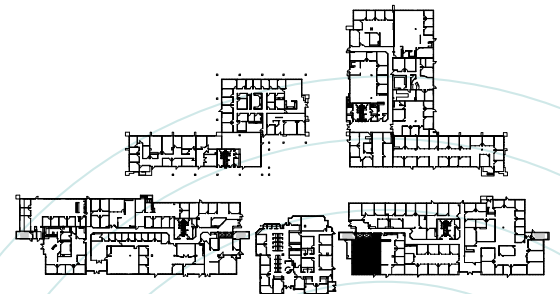
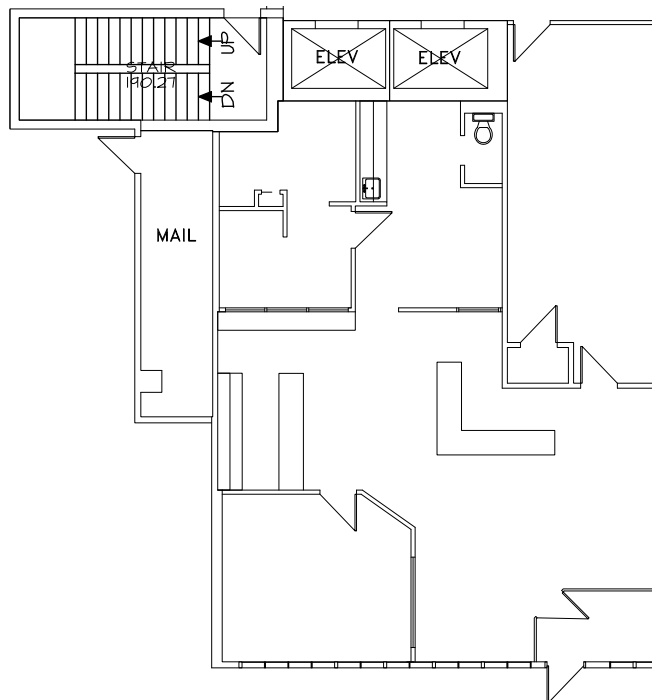


# SCOTTSDALE CENTRE

7373 N SCOTTSDALE ROAD  
SCOTTSDALE, AZ

## SUITE D100

2,023 RSF



FOR MEDICAL INQUIRIES PLEASE CONTACT



### SHEILA BALE

Managing Director  
+1 602 224 4454  
sheila.bale@cushwake.com

### ERIKA ECKBLAD

Director  
+1 602 224 4451  
erika.eckblad@cushwake.com

FOR OFFICE INQUIRIES PLEASE CONTACT



### TIM WHITTEMORE

Senior Director  
+1 602 229 5931  
tim.whittemore@cushwake.com

### PATRICK SCHRIMSHER

Director  
+1 602 468 8529  
patrick.schrimsher@cushwake.com



©2025 Cushman & Wakefield. All rights reserved. The information contained in this communication is strictly confidential. This information has been obtained from sources believed to be reliable but has not been verified. NO WARRANTY OR REPRESENTATION, EXPRESS OR IMPLIED, IS MADE AS TO THE CONDITION OF THE PROPERTY (OR PROPERTIES) REFERENCED HEREIN OR AS TO THE ACCURACY OR COMPLETENESS OF THE INFORMATION CONTAINED HEREIN, AND SAME IS SUBMITTED SUBJECT TO ERRORS, OMISSIONS, CHANGE OF PRICE, RENTAL OR OTHER CONDITIONS, WITHDRAWAL WITHOUT NOTICE, AND TO ANY SPECIAL LISTING CONDITIONS IMPOSED BY THE PROPERTY OWNER(S). ANY PROJECTIONS, OPINIONS OR ESTIMATES ARE SUBJECT TO UNCERTAINTY AND DO NOT SIGNIFY CURRENT OR FUTURE PROPERTY PERFORMANCE. COE-PM-West-11.28.2025



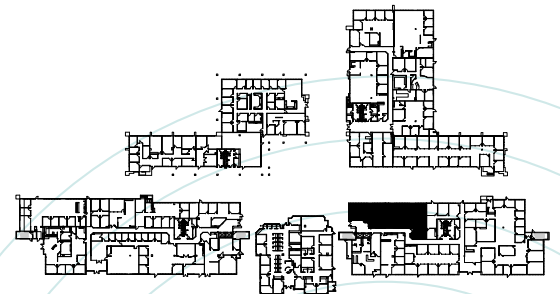
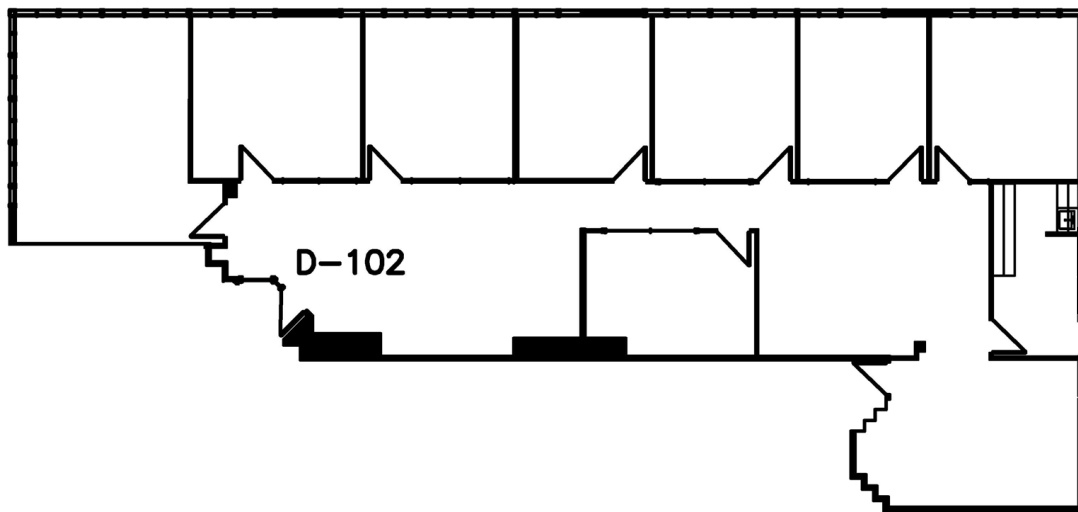


# SCOTTSDALE CENTRE

7373 N SCOTTSDALE ROAD  
SCOTTSDALE, AZ

## SUITE D102

3,500 RSF



FOR MEDICAL INQUIRIES PLEASE CONTACT



### SHEILA BALE

Managing Director  
+1 602 224 4454  
sheila.bale@cushwake.com

### ERIKA ECKBLAD

Director  
+1 602 224 4451  
erika.eckblad@cushwake.com

FOR OFFICE INQUIRIES PLEASE CONTACT



### TIM WHITTEMORE

Senior Director  
+1 602 229 5931  
tim.whittemore@cushwake.com

### PATRICK SCHRIMSHER

Director  
+1 602 468 8529  
patrick.schrimsher@cushwake.com



©2025 Cushman & Wakefield. All rights reserved. The information contained in this communication is strictly confidential. This information has been obtained from sources believed to be reliable but has not been verified. NO WARRANTY OR REPRESENTATION, EXPRESS OR IMPLIED, IS MADE AS TO THE CONDITION OF THE PROPERTY (OR PROPERTIES) REFERENCED HEREIN OR AS TO THE ACCURACY OR COMPLETENESS OF THE INFORMATION CONTAINED HEREIN, AND SAME IS SUBMITTED SUBJECT TO ERRORS, OMISSIONS, CHANGE OF PRICE, RENTAL OR OTHER CONDITIONS, WITHDRAWAL WITHOUT NOTICE, AND TO ANY SPECIAL LISTING CONDITIONS IMPOSED BY THE PROPERTY OWNER(S). ANY PROJECTIONS, OPINIONS OR ESTIMATES ARE SUBJECT TO UNCERTAINTY AND DO NOT SIGNIFY CURRENT OR FUTURE PROPERTY PERFORMANCE. COE-PM-West-11.28.2025

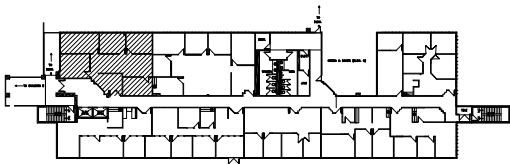
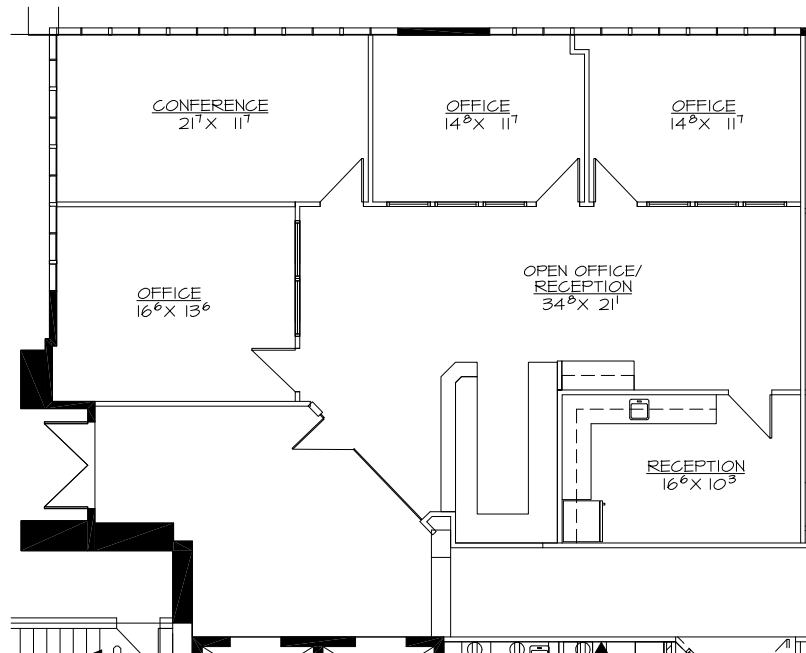


# SCOTTSDALE CENTRE

7373 N SCOTTSDALE ROAD  
SCOTTSDALE, AZ

## SUITE D200

1,831 RSF | SPEC SUITE



FOR MEDICAL INQUIRIES PLEASE CONTACT



### SHEILA BALE

Managing Director  
+1 602 224 4454  
sheila.bale@cushwake.com

### ERIKA ECKBLAD

Director  
+1 602 224 4451  
erika.eckblad@cushwake.com

FOR OFFICE INQUIRIES PLEASE CONTACT



### TIM WHITTEMORE

Senior Director  
+1 602 229 5931  
tim.whittemore@cushwake.com

### PATRICK SCHRIMSHER

Director  
+1 602 468 8529  
patrick.schrimsher@cushwake.com



©2025 Cushman & Wakefield. All rights reserved. The information contained in this communication is strictly confidential. This information has been obtained from sources believed to be reliable but has not been verified. NO WARRANTY OR REPRESENTATION, EXPRESS OR IMPLIED, IS MADE AS TO THE CONDITION OF THE PROPERTY (OR PROPERTIES) REFERENCED HEREIN OR AS TO THE ACCURACY OR COMPLETENESS OF THE INFORMATION CONTAINED HEREIN, AND SAME IS SUBMITTED SUBJECT TO ERRORS, OMISSIONS, CHANGE OF PRICE, RENTAL OR OTHER CONDITIONS, WITHDRAWAL WITHOUT NOTICE, AND TO ANY SPECIAL LISTING CONDITIONS IMPOSED BY THE PROPERTY OWNER(S). ANY PROJECTIONS, OPINIONS OR ESTIMATES ARE SUBJECT TO UNCERTAINTY AND DO NOT SIGNIFY CURRENT OR FUTURE PROPERTY PERFORMANCE. COE-PM-West-11.28.2025

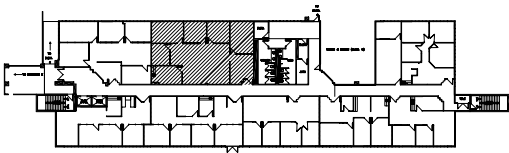
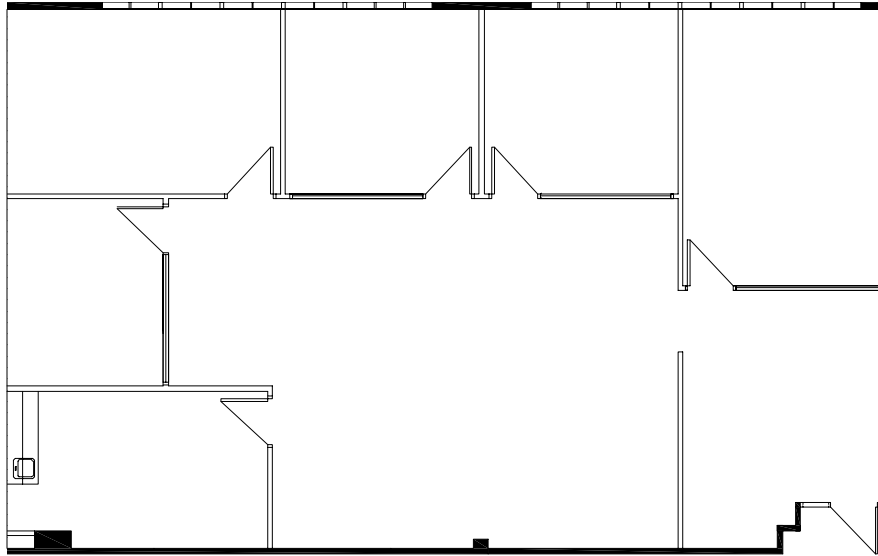


**SCOTTSDALE**  
CENTRE

7373 N SCOTTSDALE ROAD  
SCOTTSDALE, AZ

## SUITE D210

2,271 RSF



FOR MEDICAL INQUIRIES PLEASE CONTACT



### SHEILA BALE

Managing Director  
+1 602 224 4454  
sheila.bale@cushwake.com

### ERIKA ECKBLAD

Director  
+1 602 224 4451  
erika.eckblad@cushwake.com

FOR OFFICE INQUIRIES PLEASE CONTACT



### TIM WHITTEMORE

Senior Director  
+1 602 229 5931  
tim.whittemore@cushwake.com

### PATRICK SCHRIMSHER

Director  
+1 602 468 8529  
patrick.schrimsher@cushwake.com



©2025 Cushman & Wakefield. All rights reserved. The information contained in this communication is strictly confidential. This information has been obtained from sources believed to be reliable but has not been verified. NO WARRANTY OR REPRESENTATION, EXPRESS OR IMPLIED, IS MADE AS TO THE CONDITION OF THE PROPERTY (OR PROPERTIES) REFERENCED HEREIN OR AS TO THE ACCURACY OR COMPLETENESS OF THE INFORMATION CONTAINED HEREIN, AND SAME IS SUBMITTED SUBJECT TO ERRORS, OMISSIONS, CHANGE OF PRICE, RENTAL OR OTHER CONDITIONS, WITHDRAWAL WITHOUT NOTICE, AND TO ANY SPECIAL LISTING CONDITIONS IMPOSED BY THE PROPERTY OWNER(S). ANY PROJECTIONS, OPINIONS OR ESTIMATES ARE SUBJECT TO UNCERTAINTY AND DO NOT SIGNIFY CURRENT OR FUTURE PROPERTY PERFORMANCE. COE-PM-West-11.28.2025

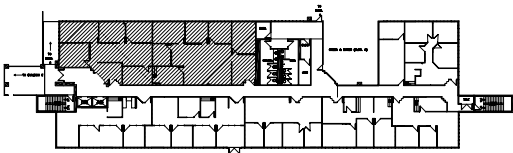
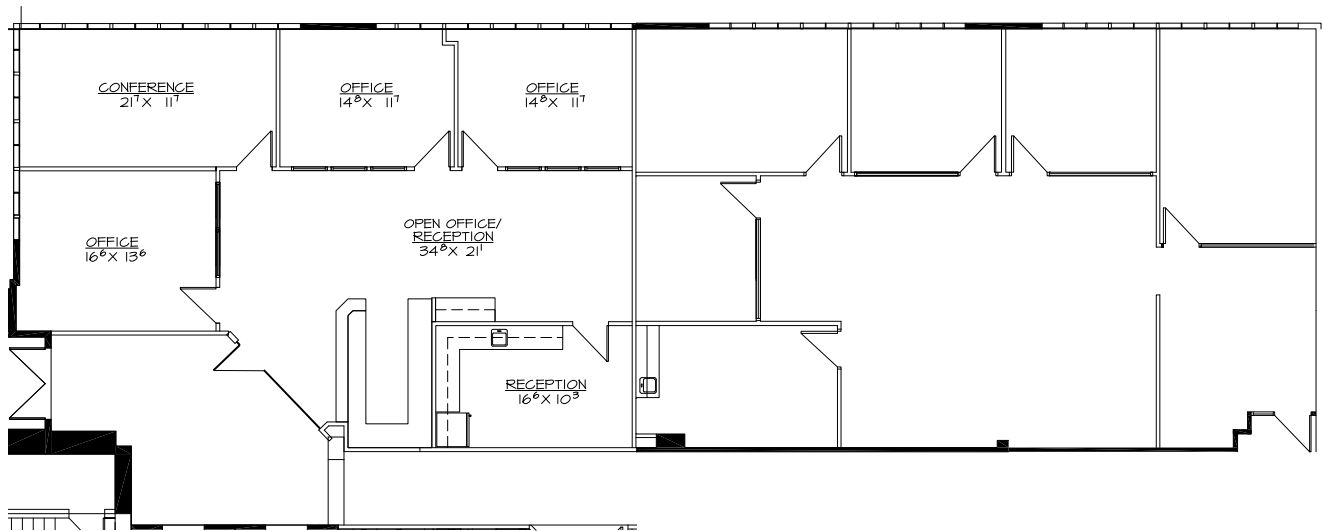


# SCOTTSDALE CENTRE

7373 N SCOTTSDALE ROAD  
SCOTTSDALE, AZ

## SUITE D200 + D210

4,102 RSF



FOR MEDICAL INQUIRIES PLEASE CONTACT



### SHEILA BALE

Managing Director  
+1 602 224 4454  
sheila.bale@cushwake.com

### ERIKA ECKBLAD

Director  
+1 602 224 4451  
erika.eckblad@cushwake.com

FOR OFFICE INQUIRIES PLEASE CONTACT



### TIM WHITTEMORE

Senior Director  
+1 602 229 5931  
tim.whittemore@cushwake.com

### PATRICK SCHRIMSHER

Director  
+1 602 468 8529  
patrick.schrimsher@cushwake.com



©2025 Cushman & Wakefield. All rights reserved. The information contained in this communication is strictly confidential. This information has been obtained from sources believed to be reliable but has not been verified. NO WARRANTY OR REPRESENTATION, EXPRESS OR IMPLIED, IS MADE AS TO THE CONDITION OF THE PROPERTY (OR PROPERTIES) REFERENCED HEREIN OR AS TO THE ACCURACY OR COMPLETENESS OF THE INFORMATION CONTAINED HEREIN, AND SAME IS SUBMITTED SUBJECT TO ERRORS, OMISSIONS, CHANGE OF PRICE, RENTAL OR OTHER CONDITIONS, WITHDRAWAL WITHOUT NOTICE, AND TO ANY SPECIAL LISTING CONDITIONS IMPOSED BY THE PROPERTY OWNER(S). ANY PROJECTIONS, OPINIONS OR ESTIMATES ARE SUBJECT TO UNCERTAINTY AND DO NOT SIGNIFY CURRENT OR FUTURE PROPERTY PERFORMANCE. COE-PM-West-11.28.2025

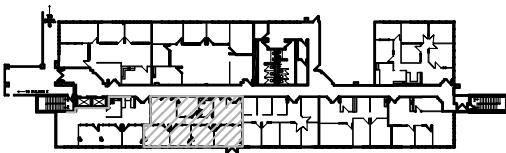
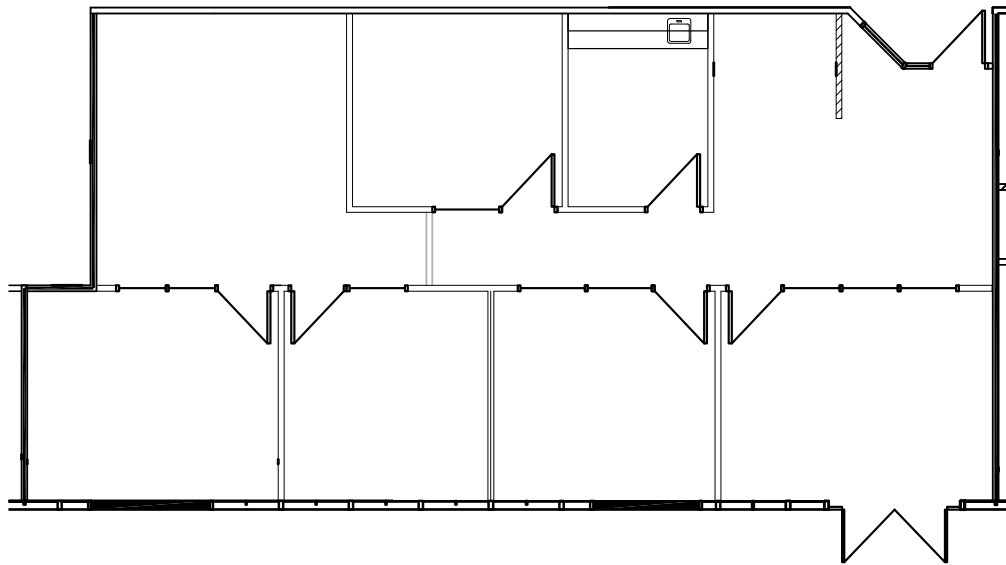


**SCOTTSDALE**  
CENTRE

7373 N SCOTTSDALE ROAD  
SCOTTSDALE, AZ

## SUITE D225

1,690 RSF | AVAILABLE 1/1/26



FOR MEDICAL INQUIRIES PLEASE CONTACT



### SHEILA BALE

Managing Director  
+1 602 224 4454  
sheila.bale@cushwake.com

### ERIKA ECKBLAD

Director  
+1 602 224 4451  
erika.eckblad@cushwake.com

FOR OFFICE INQUIRIES PLEASE CONTACT



### TIM WHITTEMORE

Senior Director  
+1 602 229 5931  
tim.whittemore@cushwake.com

### PATRICK SCHRIMSHER

Director  
+1 602 468 8529  
patrick.schrimsher@cushwake.com



©2025 Cushman & Wakefield. All rights reserved. The information contained in this communication is strictly confidential. This information has been obtained from sources believed to be reliable but has not been verified. NO WARRANTY OR REPRESENTATION, EXPRESS OR IMPLIED, IS MADE AS TO THE CONDITION OF THE PROPERTY (OR PROPERTIES) REFERENCED HEREIN OR AS TO THE ACCURACY OR COMPLETENESS OF THE INFORMATION CONTAINED HEREIN, AND SAME IS SUBMITTED SUBJECT TO ERRORS, OMISSIONS, CHANGE OF PRICE, RENTAL OR OTHER CONDITIONS, WITHDRAWAL WITHOUT NOTICE, AND TO ANY SPECIAL LISTING CONDITIONS IMPOSED BY THE PROPERTY OWNER(S). ANY PROJECTIONS, OPINIONS OR ESTIMATES ARE SUBJECT TO UNCERTAINTY AND DO NOT SIGNIFY CURRENT OR FUTURE PROPERTY PERFORMANCE. COE-PM-West-11.28.2025