

FOR SALE



RANGE ROAD 2211, RM OF SHERWOOD **PACIFIC RIDGE GRAIN PLANT**

OVERVIEW

If you're looking to invest in your future, this is the listing for you. The Seed Cleaning Facility includes an office building, warehouse, processing building, open air drive over scale and bin pad area with eight bins and two drive under load out bins. The plant is currently 75% complete and requires finishing to operate. The site is located six kilometers from Regina and four kilometers from the Regina Bypass.

PACIFIC RIDGE GRAIN FACILITY



PROPERTY PROFILE

AVAILABLE FOR SALE

11,887.50 SF

SALE PRICE

\$5,000,000.00

LAND SIZE

20.00 Acres

ZONING

AG Agricultural District

POSSESSION

Immediate

LEGAL DESCRIPTION

Blk/Par A, Plan 102383737 Ext 0,
SE 14-18-21 W2M - 18208 Range
Road 2211.

BUILDING DETAILS

- Office, warehouse, and processing building.
- 22ft. ceiling height in office and warehouse.
- Processing building is steel frame with 40ft. ceiling height.
- Wood frame with steel beams.
- Exterior is metal cladding with face brick.



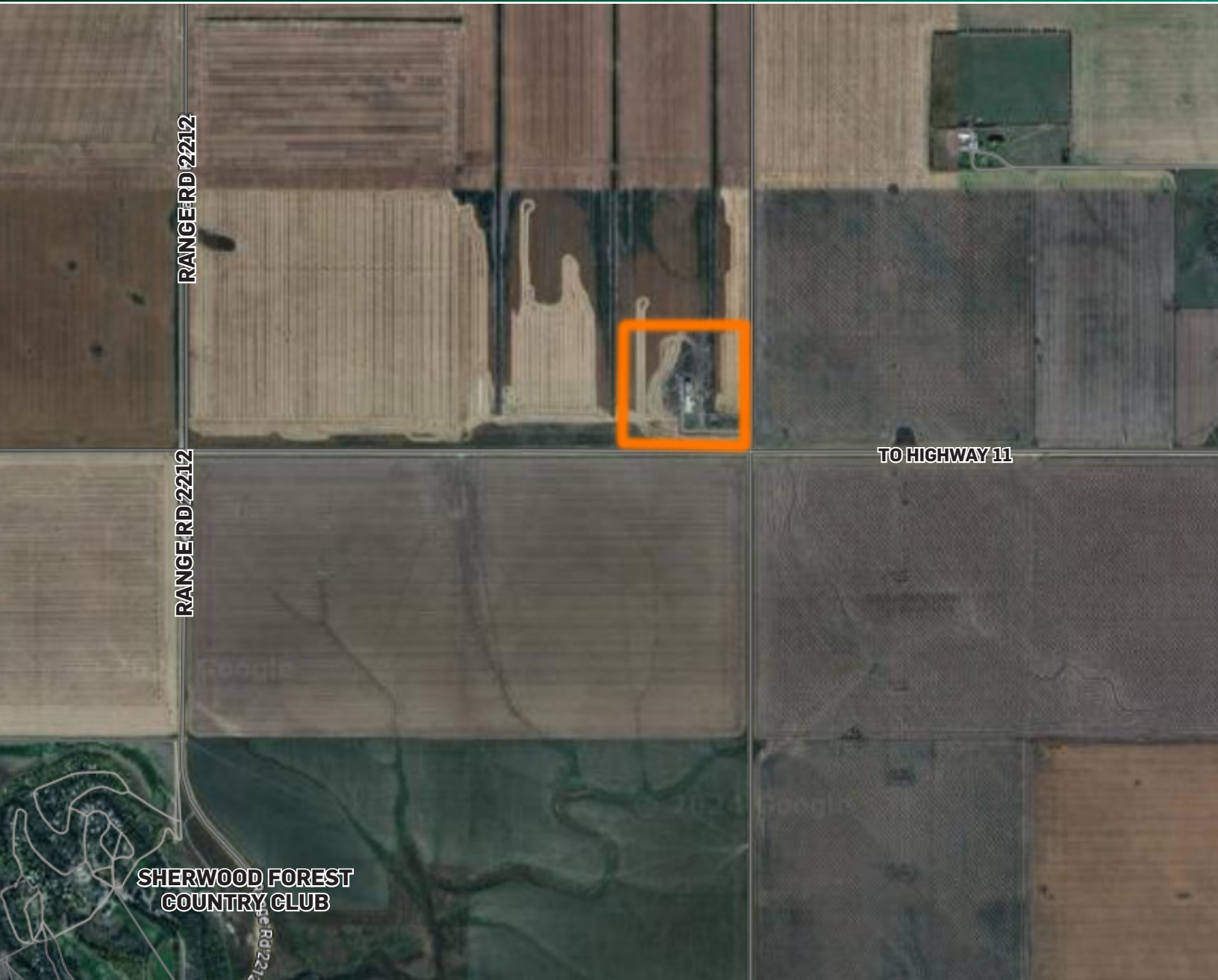
PACIFIC RIDGE GRAIN FACILITY



EQUIPMENT DESCRIPTION

Pulses Dehulling and Future Pre-Grinding Optical Sorter, Packaging and bagging system. Retail packaging for 1kg - 20kg bags. Matrix Mercury HS Form-Fill-Seal Machine and Yamato Alpha Advance ADW-A-0314S Radial, Pitless (Above Ground) Design Truck Scale, Conveyer systems, Measuring systems, Automation of Processing Capabilities - SEMC-04448-PAY#1 PACIFR 1000AMP, Hopper Bins (8), Tower, and Catwalk.

PACIFIC RIDGE GRAIN FACILITY



THIS INFORMATION HAS BEEN SECURED FROM SOURCES THAT ICR COMMERCIAL REAL ESTATE BELIEVES TO BE RELIABLE, BUT WE MAKE NO REPRESENTATION OR WARRANTIES – EXPRESSED OR IMPLIED – AS TO THE ACCURACY OF INFORMATION. JOSH W

SALES & LEASING PROPERTY MANAGEMENT

200 – 1055 PARK ST
REGINA, SK S4N 5H4
P: 306.721.6116
F: 306.721.1940

SALES & LEASING SASKATOON

275 1ST AVENUE N
SASKATOON, SK S7K 1X2
P: 306.664.6116
F: 306.664.1940

SALES & LEASING NORTH SASKATOON

840 48TH STREET E
SASKATOON, SK S7K 3Y4
P: 306.933.2929
F: 306.931.0882

PROPERTY MANAGEMENT SASKATOON

100 – 261 1ST AVENUE N
SASKATOON, SK S7K 1X2
P: 306.664.6118
F: 306.664.1940