

FOR LEASE

US BANK BUILDING  
COTTAGE GROVE, MN



CUSHMAN &  
WAKEFIELD



# US BANK BUILDING COTTAGE GROVE, MN

## PROPERTY HIGHLIGHTS

- 13,034 square foot 2-story office building
- Monument signage available
- Convenient 80th St Cottage Grove Location
- On-site bank with drive-thru service
- Abundant surface parking
- Excellent proximity to numerous area restaurants, hotels and other area amenities

### BUILDING INFORMATION

<b>BUILDING SIZE:</b>	13,034 SF
<b>SPACE AVAILABLE:</b>	Suite D 920 SF Suite F 157 SF (Available 5/1/2026)
<b>PARKING:</b>	5/1,000
<b>LEASE RATE:</b>	\$22.00 Modified Gross (Plus, Utilities Separately Metered)



# US BANK BUILDING COTTAGE GROVE, MN

## AVAILABILITIES

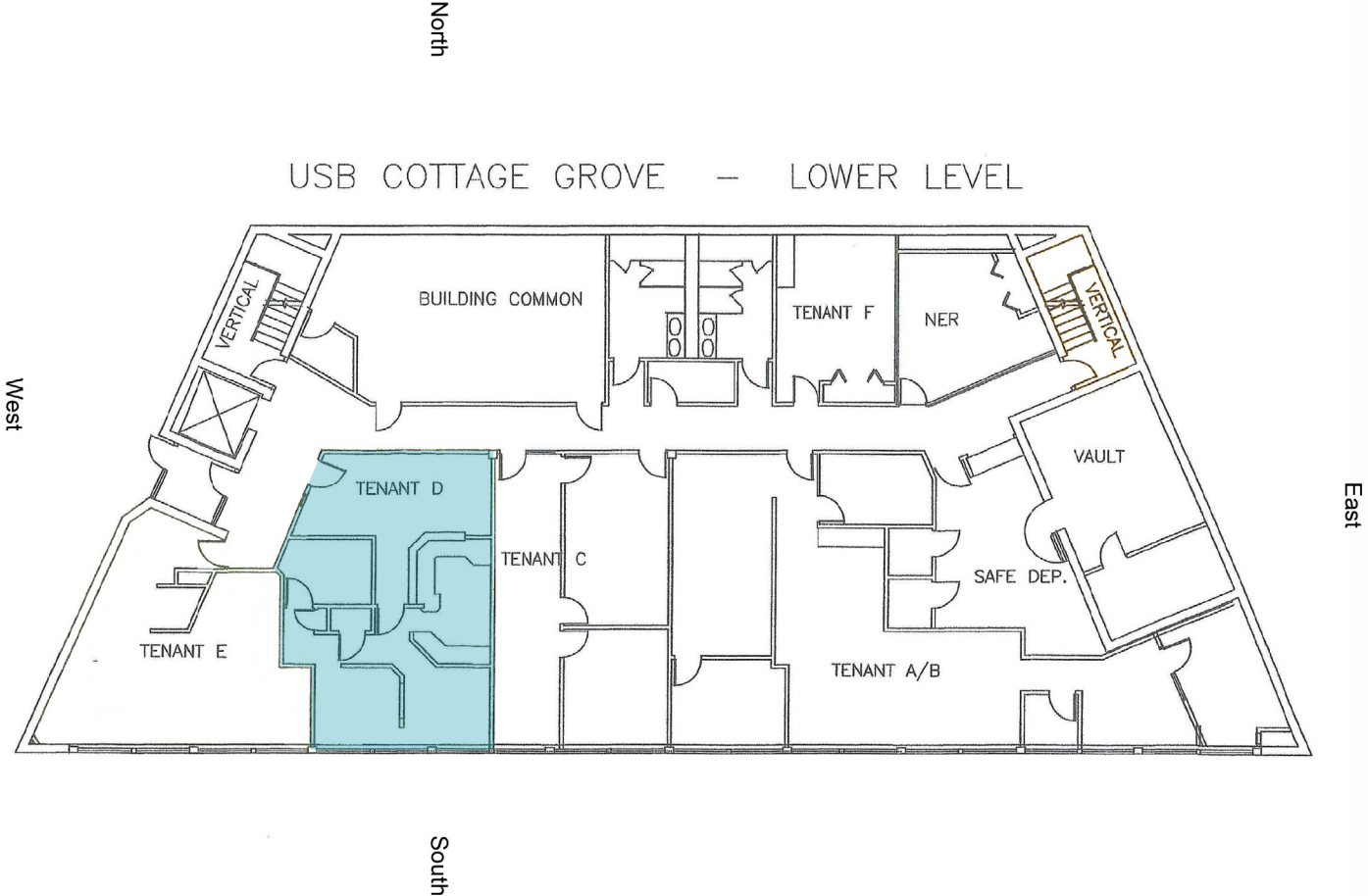
Suite Number	Square Footage
D	920
F	157



# US BANK BUILDING COTTAGE GROVE, MN

## FLOOR PLAN

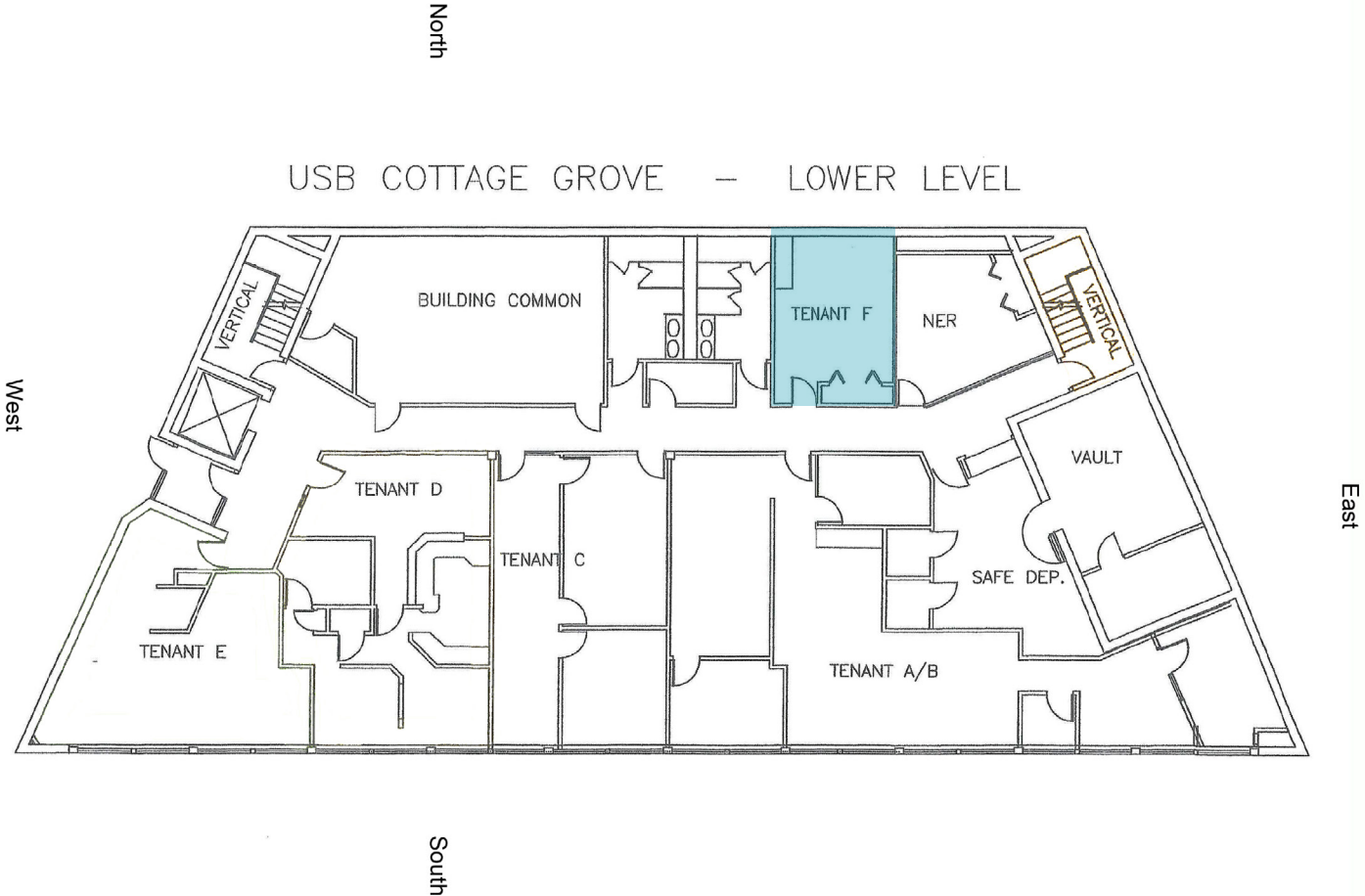
SUITE D - 920 SF



# US BANK BUILDING COTTAGE GROVE, MN

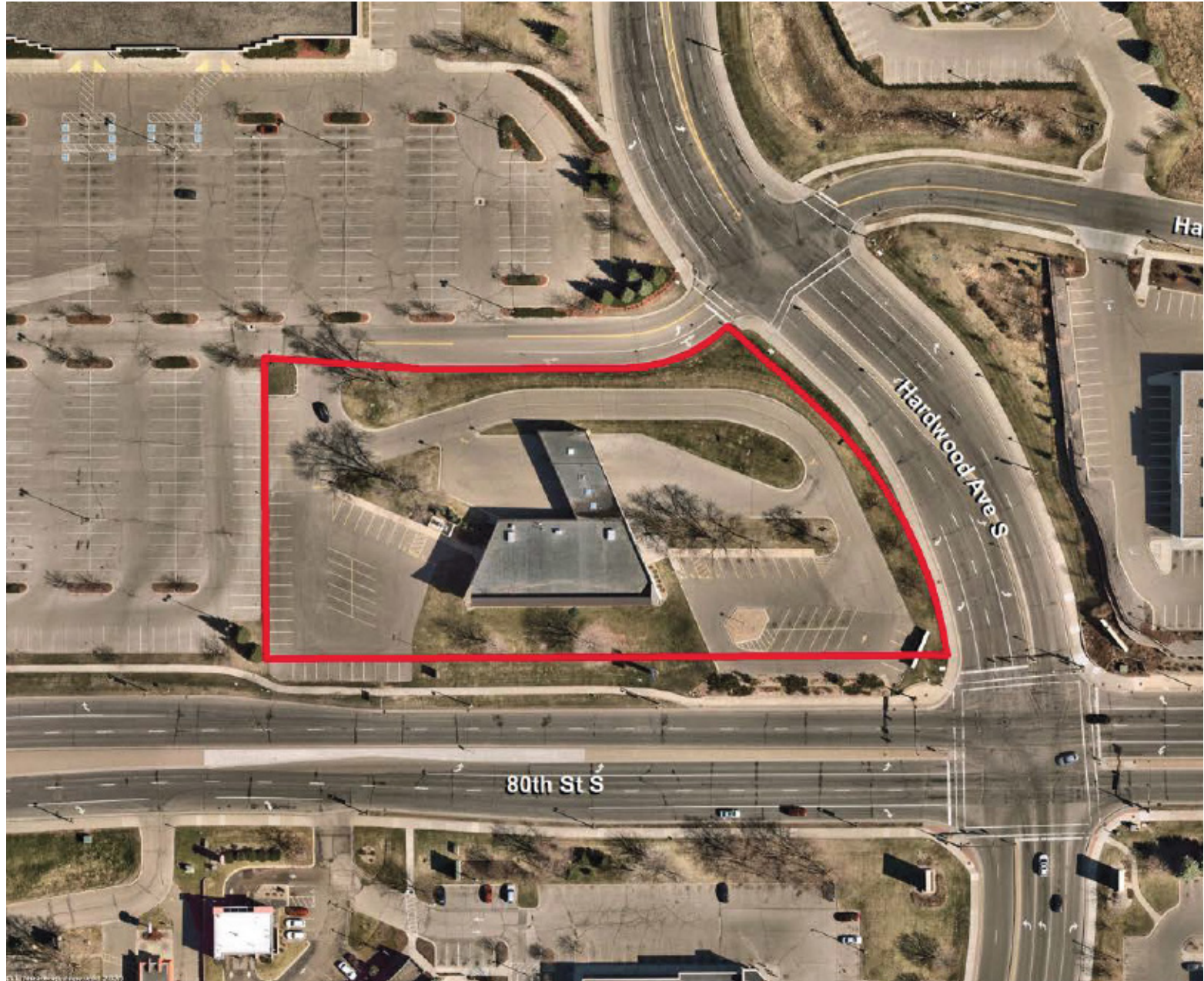
## FLOOR PLAN

SUITE F - 157 SF



# US BANK BUILDING COTTAGE GROVE, MN

PROPERTY  
AERIAL





# US BANK BUILDING COTTAGE GROVE, MN





**FOR MORE INFORMATION, CONTACT:**

**RYAN HAMPSON**  
SENIOR ASSOCIATE  
+1 952 465 3309  
ryan.hampson@cushwake.com

**AARON BARNARD**  
SENIOR DIRECTOR  
+1 952 465 3372  
aaron.barnard@cushwake.com



3500 American Blvd. W, Suite 200  
Minneapolis, MN 55431

[cushmanwakefield.com](http://cushmanwakefield.com)

©2026 Cushman & Wakefield. All rights reserved. The information contained in this communication is strictly confidential. This information has been obtained from sources believed to be reliable but has not been verified. NO WARRANTY OR REPRESENTATION, EXPRESS OR IMPLIED, IS MADE AS TO THE CONDITION OF THE PROPERTY (OR PROPERTIES) REFERENCED HEREIN OR AS TO THE ACCURACY OR COMPLETENESS OF THE INFORMATION CONTAINED HEREIN, AND SAME IS SUBMITTED SUBJECT TO ERRORS, OMISSIONS, CHANGE OF PRICE, RENTAL OR OTHER CONDITIONS, WITHDRAWAL WITHOUT NOTICE, AND TO ANY SPECIAL LISTING CONDITIONS IMPOSED BY THE PROPERTY OWNER(S). ANY PROJECTIONS, OPINIONS OR ESTIMATES ARE SUBJECT TO UNCERTAINTY AND DO NOT SIGNIFY CURRENT OR FUTURE PROPERTY PERFORMANCE.