

OFFICE/INDUSTRIAL FLEX SPACE FOR LEASE

Rock Industrial Park 1

5070 NE 59TH AVE / SUITE 101 / HILLSBORO, OR 97124



Modern office/industrial flex space in the heart of Hillsboro's Silicon Forest

CONTACT

Chris Lio
Mike Mayer

503 804 2929 / 503 224 6791 / clio@naielliott.com
503 686 0599 / 503 224 6791 / mmayer@naielliott.com

NAIElliott



Property snapshot

Located just minutes off Brookwood Parkway in the heart of the Silicon Forest, **Rock Industrial Park** offers a high-quality, modern industrial environment within an established and well-connected business park. Its strategic Hillsboro location provides seamless access to major corporate campuses, key transit routes, and a strong regional talent pool—making it an ideal setting for growing companies seeking both efficiency and presence.

AVAILABLE SF

- Building 1, Suite 101
3,600 SF (2,400 SF office / 1,200 SF warehouse)

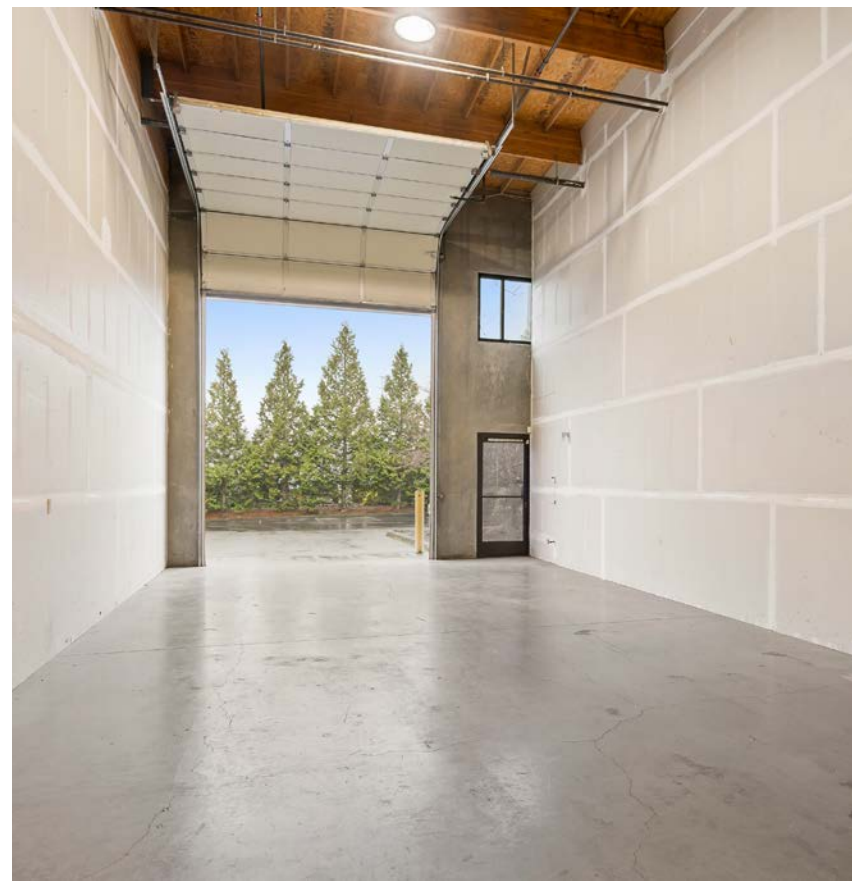
RATE

- Call for rate, NNN

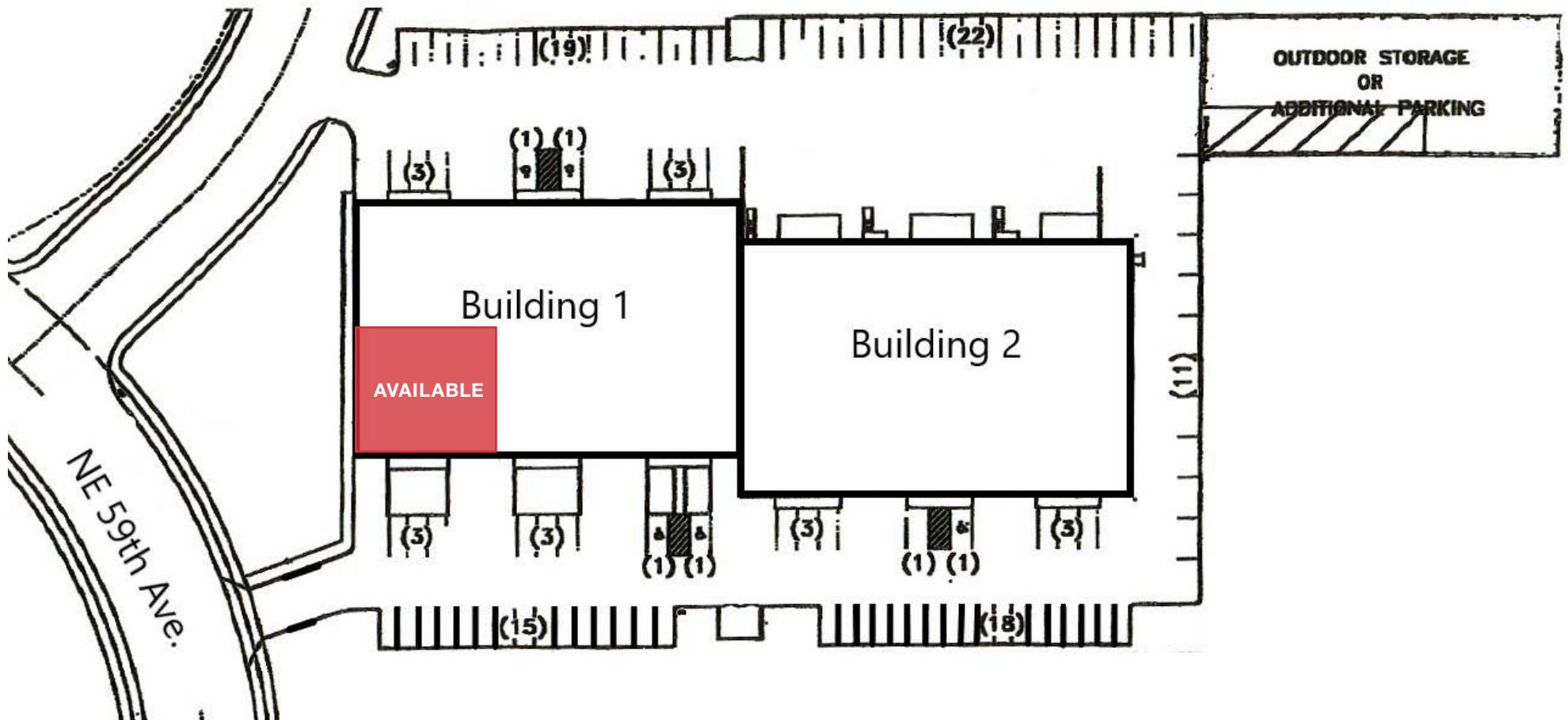
HIGHLIGHTS

- Premier endcap suite offering standout visibility and access
- High-quality office buildout designed for modern teams
- Five private offices for focused, productive work
- Full HVAC throughout the office for year-round comfort
- Impressive high-ceiling conference room ideal for meetings and presentations
- Welcoming large reception area to elevate first impressions
- Three restrooms to support daily operational needs
- Functional breakroom with sink and cabinetry
- Efficient 20' clear height warehouse with room to scale

Photos



Site plan



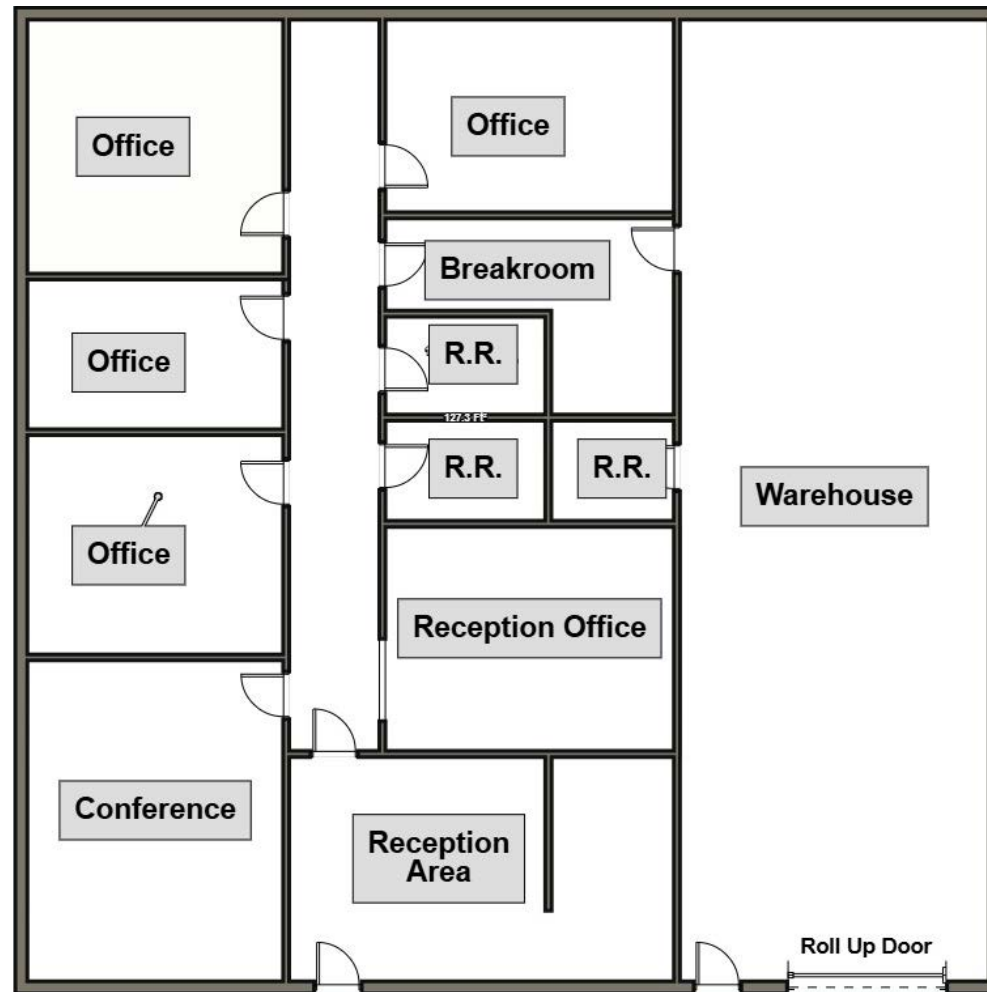
CONTACT

Chris Lio
Mike Mayer

503 804 2929 / 503 224 6791 / clio@naielliott.com
503 686 0599 / 503 224 6791 / mmayer@naielliott.com

NAIElliott

Floor plan - Bldg 1, Suite 101



CONTACT

Chris Lio
Mike Mayer

503 804 2929 / 503 224 6791 / clio@naielliott.com
503 686 0599 / 503 224 6791 / mmayer@naielliott.com

NAIElliott

Trade Area



CONTACT

Chris Lio
Mike Mayer

503 804 2929 / 503 224 6791 / clio@naielliott.com
503 686 0599 / 503 224 6791 / mmayer@naielliott.com

NAIElliott