



1404 Joliet Road  
Romeoville, Illinois 60446

One Oakbrook Terrace  
Suite 400  
Oakbrook Terrace, Illinois 60181  
+1 630 932 1234

[hiffman.com](http://hiffman.com)

### PROPERTY HIGHLIGHTS

Bluff Point Center, a 40,000 SF building, is located about 1.25 miles to the full I-55/S Bolingbrook Road interchange and the full I-55/Joliet Road interchange. One 4,400 SF office vacancy remains.



4,400 SF OFFICE  
SPACE AVAILABLE



6 SHARED LOADING  
DOCKS



FURNITURE  
AVAILABLE



7 PRIVATE  
OFFICES

### Contact

Tom Gnadt  
+1 630 693 0659  
[tggnadt@hiffman.com](mailto:tggnadt@hiffman.com)



ACCESS TO I-55  
VIA TWO FULL  
INTERCHANGES

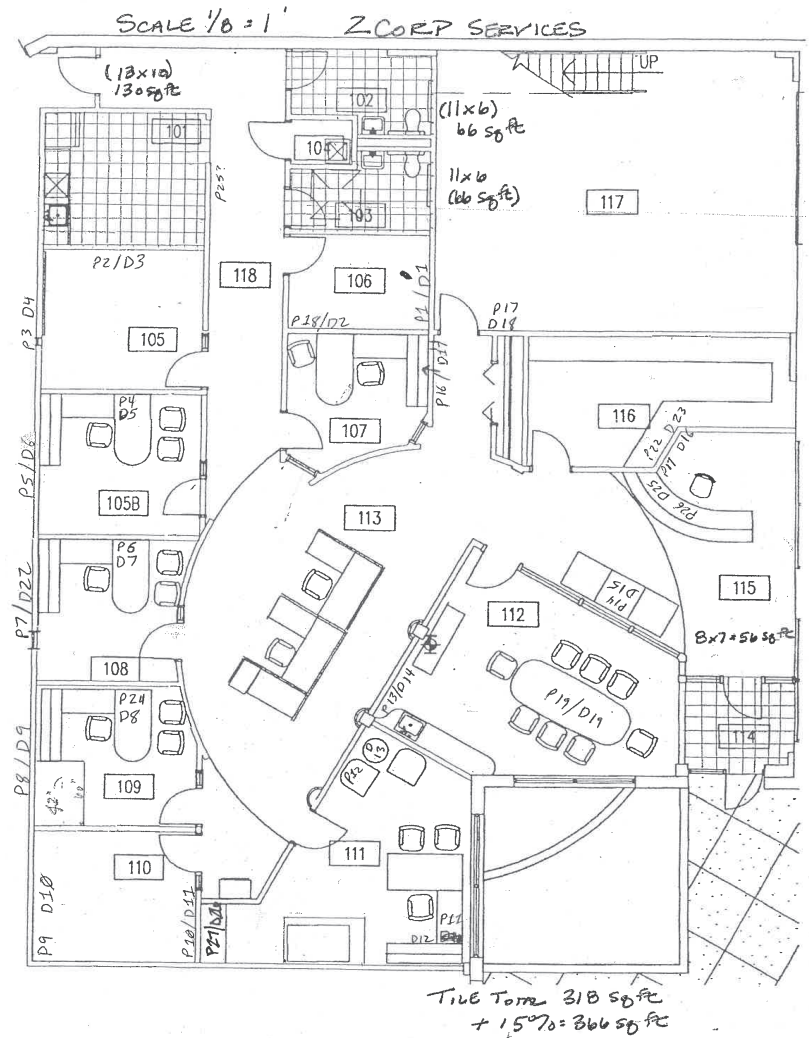


MOVE-IN  
READY

NO WARRANTY OR REPRESENTATION, EXPRESS OR IMPLIED, IS MADE AS TO THE ACCURACY OF THE INFORMATION CONTAINED HEREIN, AND THE SAME IS SUBMITTED SUBJECT TO ERRORS, OMISSIONS, CHANGE OF PRICE, RENTAL OR OTHER CONDITIONS, PRIOR SALE, LEASE OR FINANCING, OR WITHDRAWAL WITHOUT NOTICE, AND OF ANY SPECIAL LISTING CONDITIONS IMPOSED BY OUR PRINCIPALS. NO WARRANTIES OR REPRESENTATIONS ARE MADE AS TO THE CONDITION OF THE PROPERTY OR ANY HAZARDS CONTAINED THEREIN ARE ANY TO BE IMPLIED.

UNIT H - 4,400 SF

- 7 PRIVATE OFFICES
- MOVE-IN READY
- FURNITURE AVAILABLE
- LEASE RATE: \$13.75 PSF GROSS



Contact

Tom Gnadt  
+1 630 693 0675  
tgnadt@hiffman.com



One Oakbrook Terrace  
Suite 400  
Oakbrook Terrace, Illinois 60181  
+1 630 932 1234

[hiffman.com](http://hiffman.com)