

276

NOSTRAND AVENUE

BETWEEN KOSCIUSZKO STREET & LAFAYETTE AVE
BEDFORD-STUYVESANT



276


NOSTRAND AVENUE

BETWEEN KOSCIUSZKO STREET & LAFAYETTE AVE
BEDFORD-STUYVESANT

SIZE: Ground Floor - 750 SF

FRONTAGE: 20'

POSSESSION: Immediate

TRANSPORTATION:  B38, B44, B44-SBS, B52

HIGHLIGHTS:

- All uses considered
- Commercial / Retail space
- Great for: retail, office, medical
- High foot traffic area in dense residential neighborhood
- Impressive national tenancy amongst neighboring tenants
- Steps away from Bedford-Nostrand subway station

NEIGHBORING TENANTS:

- Dunkin', Home Depot, Popeye's, 8-Bit Bites, Bravo Supermarket, KFC, Chase, Greenfresh Kosher Supermarket, Baron's, Singer's, Swell Dive, Brooklyn Kolache, Natural Blend, Shipmarket Seafood Boutique, Premier 718

FOR MORE INFORMATION, PLEASE CONTACT:

ELI YADID

EYadid@ksrny.com
917.770.9173

NATHAN ADES

NAdes@ksrny.com
732.977.3242

RAFI BENOR

RBenor@ksrny.com
347.459.0445



All information supplied in this marketing presentation and/or flyer is from sources deemed reliable and is furnished subject to errors, omissions, modifications, removal of listings from sale/lease and to any listing condition. Any square footage, dimensions, floor plans and/or technical data set forth are approximations and are subject to further elaboration/confirmation.

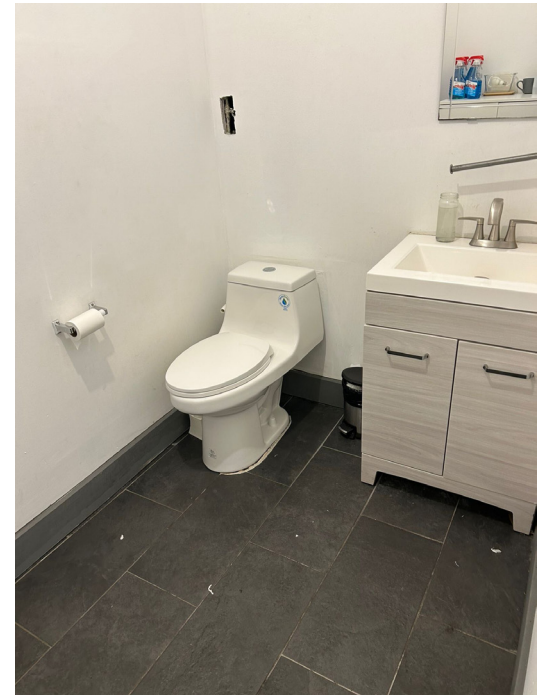
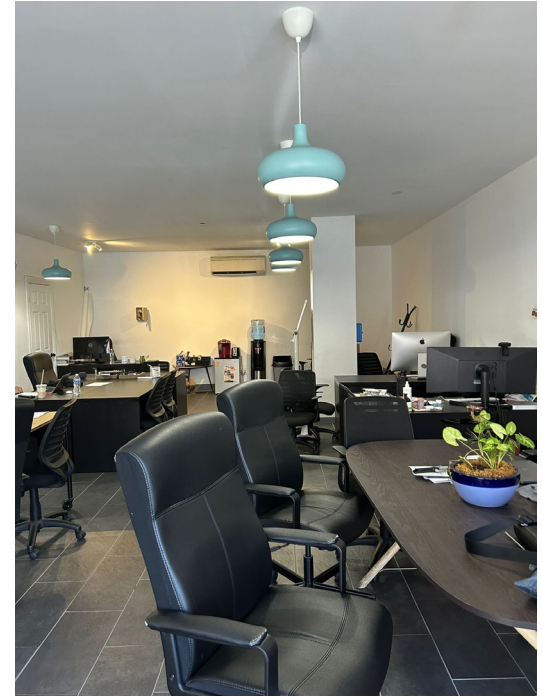


276

NOSTRAND AVENUE

BETWEEN KOSCIUSZKO STREET & LAFAYETTE AVE
BEDFORD-STUYVESANT

INTERIORS:



FOR MORE INFORMATION,
PLEASE CONTACT:

ELI YADID

EYadid@ksrny.com
917.770.9173

NATHAN ADES

NAdes@ksrny.com
732.977.3242

RAFI BENOR

RBenor@ksrny.com
347.459.0445



All information supplied in this marketing presentation and/or flyer is from sources deemed reliable and is furnished subject to errors, omissions, modifications, removal of listings from sale/lease and to any listing condition.
Any square footage, dimensions, floor plans and/or technical data set forth are approximations and are subject to further elaboration/confirmation.