

3501 SW 160<sup>th</sup> Ave

Miramar, FL 33027

**workspace**  
property trust

96,394 SF Available Now  
**Full Building HQ Opportunity**

**Asking Rent: \$25.00/NNN**  
**2025 OPEX: \$15.39 RSF**

Signage Available





# 3501 SW 160<sup>TH</sup> Ave

Miramar, Florida 33027

## PROPERTY HIGHLIGHTS

### AMENITIES

Class "A" office located within the prestigious Miramar Centre Corporate Park. This building includes hurricane-impact glass windows, Full building 1,100-gallon back-up diesel generator, large ground floor multi-purpose area with collapsible wall & café, Café catering equipment on site, multiple executive balconies and loading dock. Tenants benefit from on-site management, and campus style space and outdoor lounge area complete with picnic tables, complimentary Wi-Fi and 5/1000 SF parking ratio. Plus, potential for additional campus space in adjacent Miramar Centre I or III.

### TRANSPORTATION

Immediate access to I-75 and Miramar Parkway

### TECHNOLOGY

AT&T, FPL FiberNet, Sprint and Comcast

### SUSTAINABILITY

Landlord will collaborate with tenant should tenant desire LEED certification for tenant improvements.



Outdoor Lounge



Lobby

## 96,394 SF Available Now

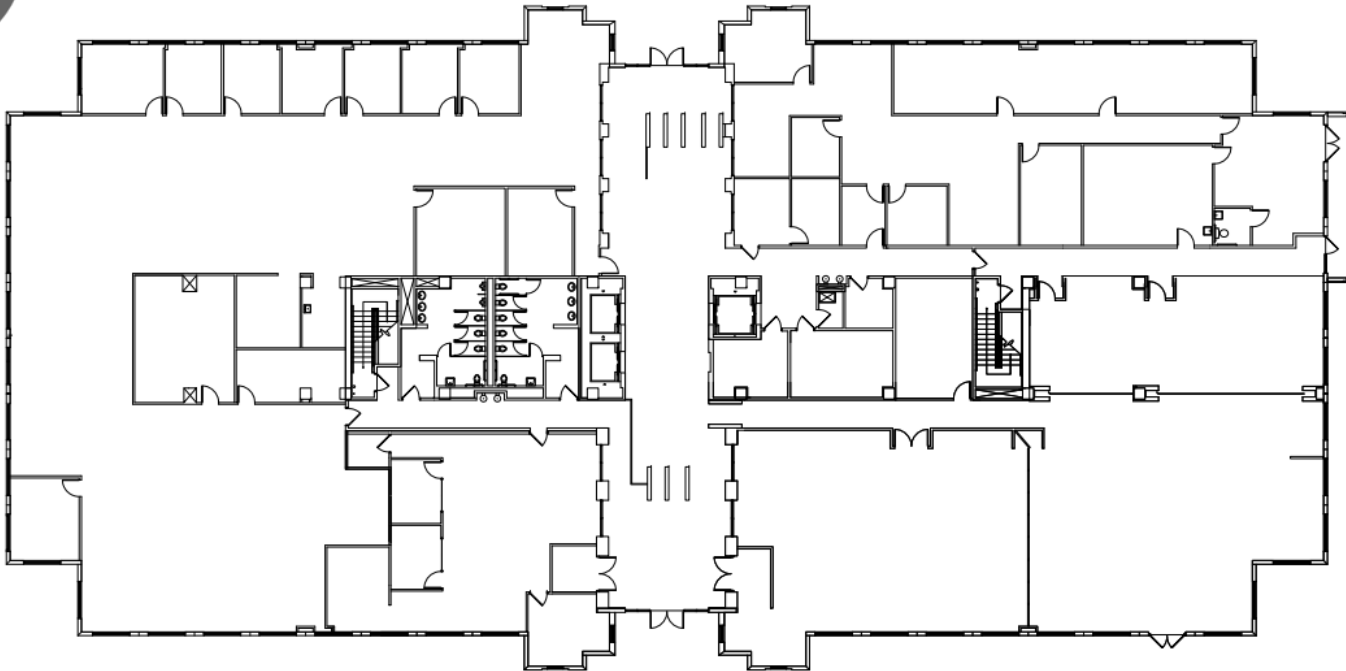
# 3501 SW 160<sup>TH</sup> Ave

## 1st floor

Miramar, FL 33027

**workspace**  
property trust

### 21,657 RSF Available Now



## Leasing Information

777 Yamato Road, Suite 105, Boca Raton, FL, 33431  
(954) 391-5503  
[www.workspaceproperty.com](http://www.workspaceproperty.com)

Mike, Nathanson  
Director of Leasing  
[mnathanson@workspaceproperty.com](mailto:mnathanson@workspaceproperty.com)

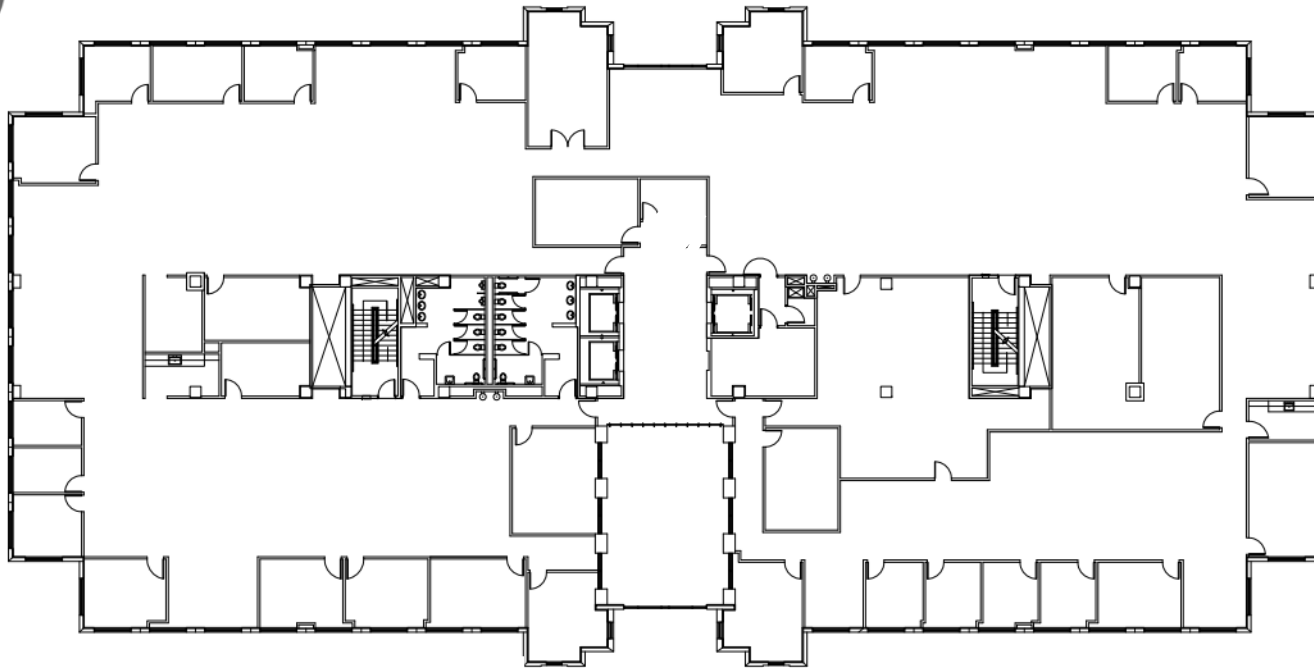
3501 SW 160<sup>TH</sup> Ave

2nd floor

Miramar, FL 33027

workspace  
property trust

24,102 RSF Available Now



Leasing Information

777 Yamato Road, Suite 105, Boca Raton, FL, 33431  
(954) 391-5503  
[www.workspaceproperty.com](http://www.workspaceproperty.com)

Mike, Nathanson  
Director of Leasing  
[mnathanson@workspaceproperty.com](mailto:mnathanson@workspaceproperty.com)

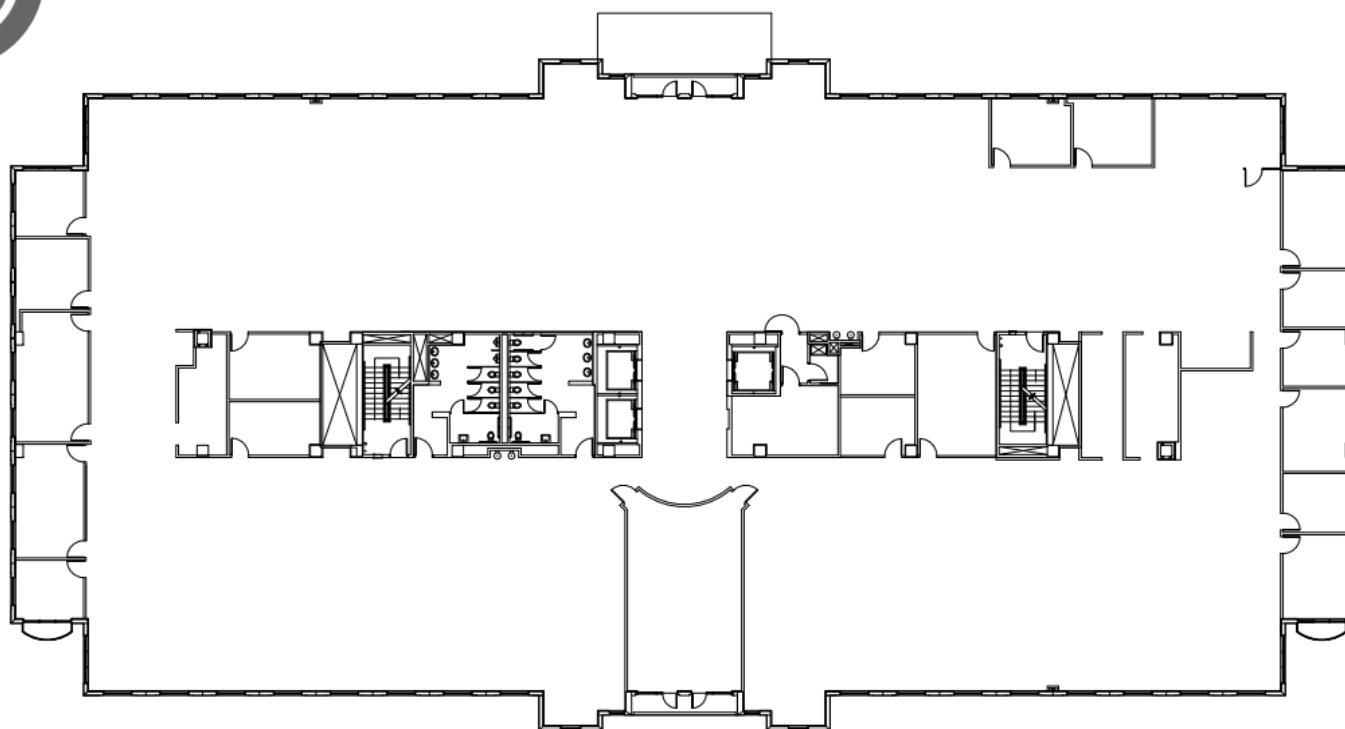
3501 SW 160<sup>TH</sup> Ave

3rd floor

Miramar, FL 33027

workspace  
property trust

25,071 RSF Available Now



Leasing Information

777 Yamato Road, Suite 105, Boca Raton, FL, 33431  
(954) 391-5503  
[www.workspaceproperty.com](http://www.workspaceproperty.com)

Mike, Nathanson  
Director of Leasing  
[mnathanson@workspaceproperty.com](mailto:mnathanson@workspaceproperty.com)

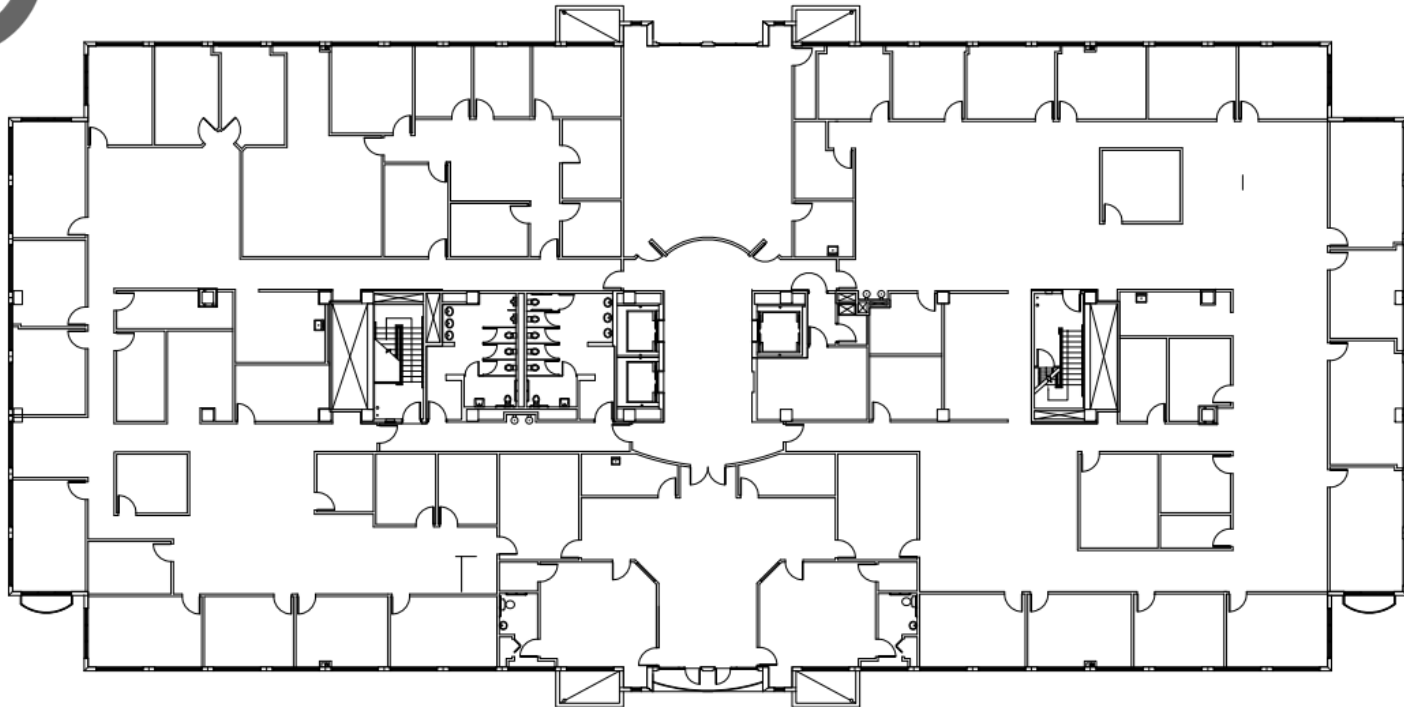
3501 SW 160<sup>TH</sup> Ave

4th floor

Miramar, FL 33027

workspace  
property trust

25,564 RSF Available Now



Leasing Information

777 Yamato Road, Suite 105, Boca Raton, FL, 33431  
(954) 391-5503  
[www.workspaceproperty.com](http://www.workspaceproperty.com)

Mike, Nathanson  
Director of Leasing  
[mnathanson@workspaceproperty.com](mailto:mnathanson@workspaceproperty.com)





# Spaces for the Way Work Happens Today.

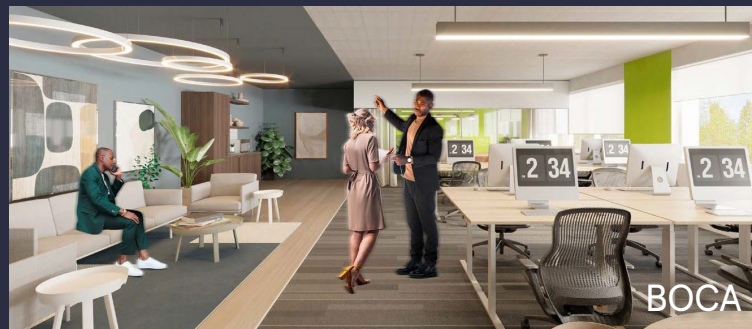
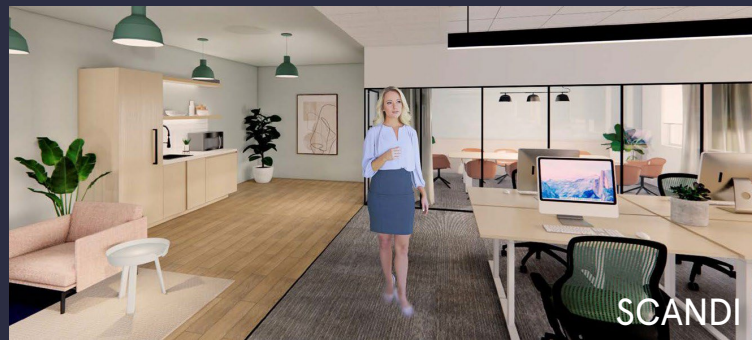
These beautifully designed themes inspire creativity and encourage productivity. Whether you are looking for 1,000 square feet or 100,000 square feet, our in-house design & development team can deliver a turnkey office solution.

## Tailored for the Evolution of Office:

- "A La Carte" or "On Demand" Furniture Packages Available
- Plug & Play IT Packages Available



**Scan here** to learn more about our premium theme selects.



\*Indicative of the look and feel (not the actual suite)