

LEASE

RETAIL



800 S US 31



800 S US 31, GREENWOOD, IN 46143

PROPERTY OVERVIEW

Located on US 31 in Greenwood, this 1,965 sf freestanding former Credit Union building has great visibility and access.

The building sits at a signalized intersection with abundant parking, two drive-thru lanes and a pylon sign facing US 31. It is perfect for a variety of businesses including a bank branch, restaurant, retail, medical clinic or other professional office uses.

PROPERTY HIGHLIGHTS

- For Lease
- Outstanding Access & Visibility from US 31
- High traffic counts – over 32,000 vpd
- Located in front of Rural King Center
- Prominent Pylon Sign on US 31
- Zoned C2

LEASE RATE \$32.00 SF/YR (NNN)

Lot Size: 0.06 Acres

Building Size: 1,965 SF



BRADLEY COMPANY

310 E. 96th St., Suite 100
Indianapolis, IN 46240
317.663.6000

BETH PATTERSON, CCIM

Senior Vice President | Principal
317.663.6558
bpatterson@bradleyco.com



BRADLEYCO.COM



ADDITIONAL PHOTOS

800 S US 31, GREENWOOD, IN 46143

LEASE

RETAIL



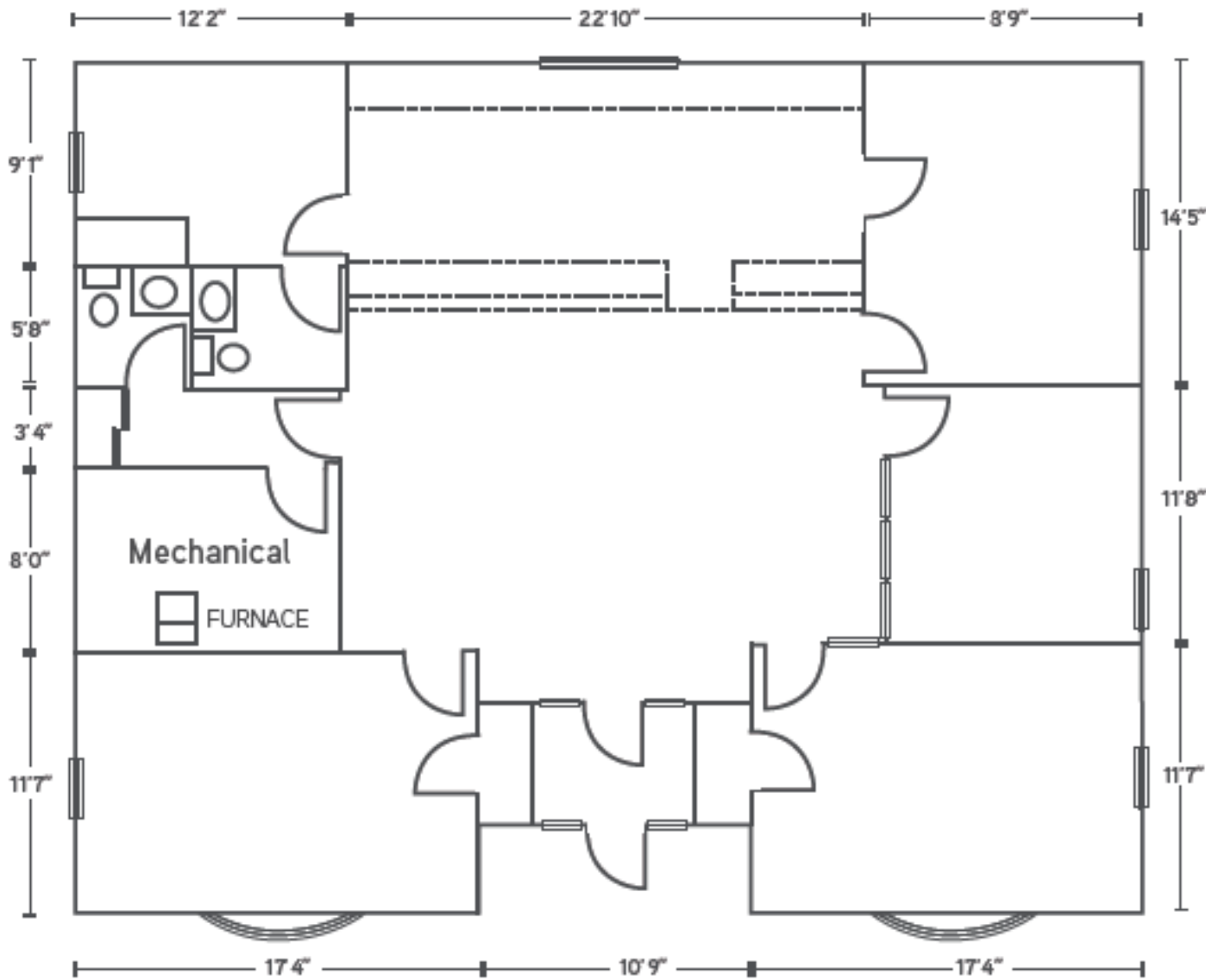
BETH PATTERSON, CCIM
Senior Vice President | Principal
317.663.6558
bpatterson@bradleyco.com



800 S US 31, GREENWOOD, IN 46143

LEASE

RETAIL



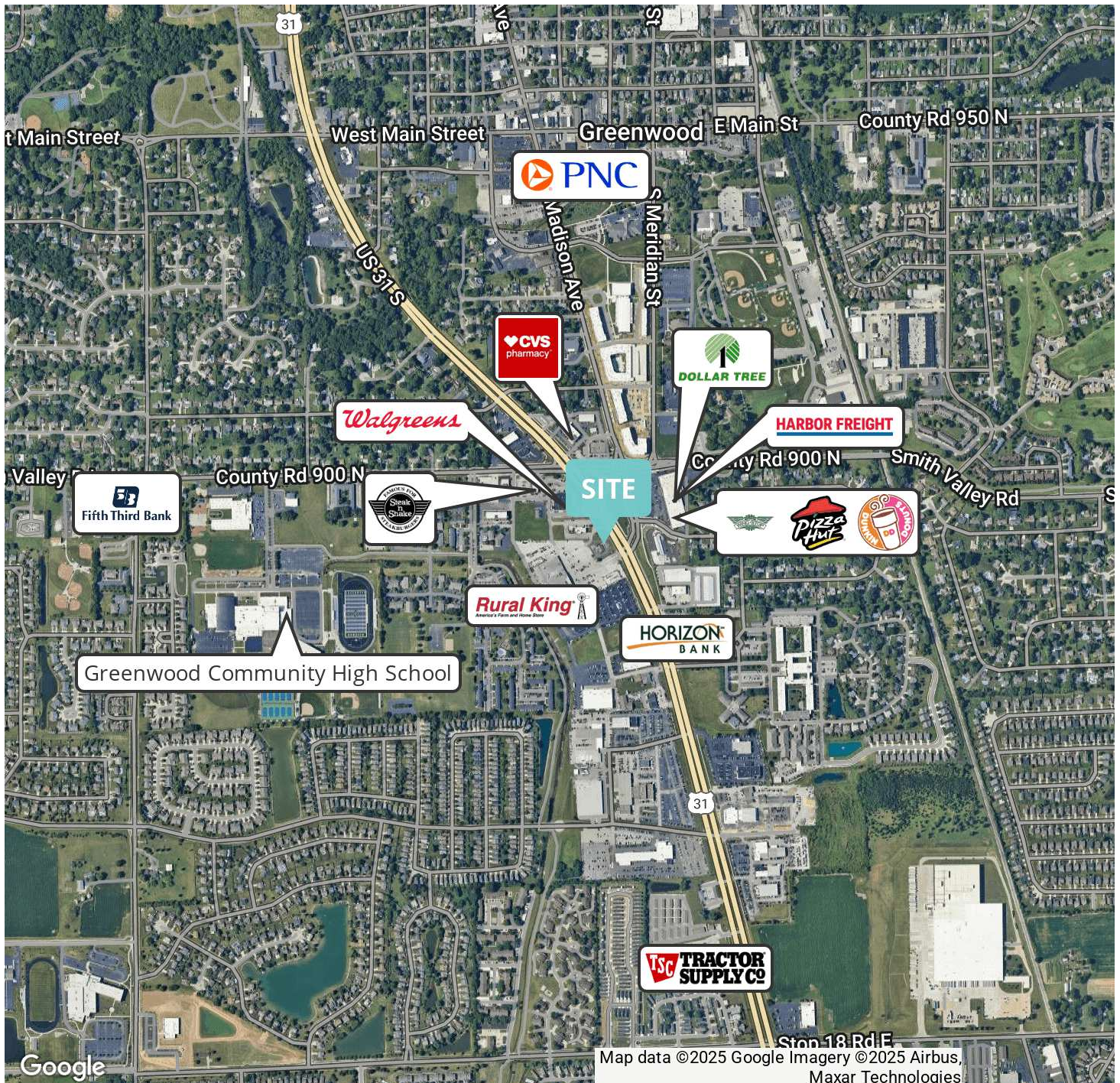
BETH PATTERSON, CCIM
Senior Vice President | Principal
317.663.6558
bpatterson@bradleyco.com



800 S US 31, GREENWOOD, IN 46143

LEASE

RETAIL



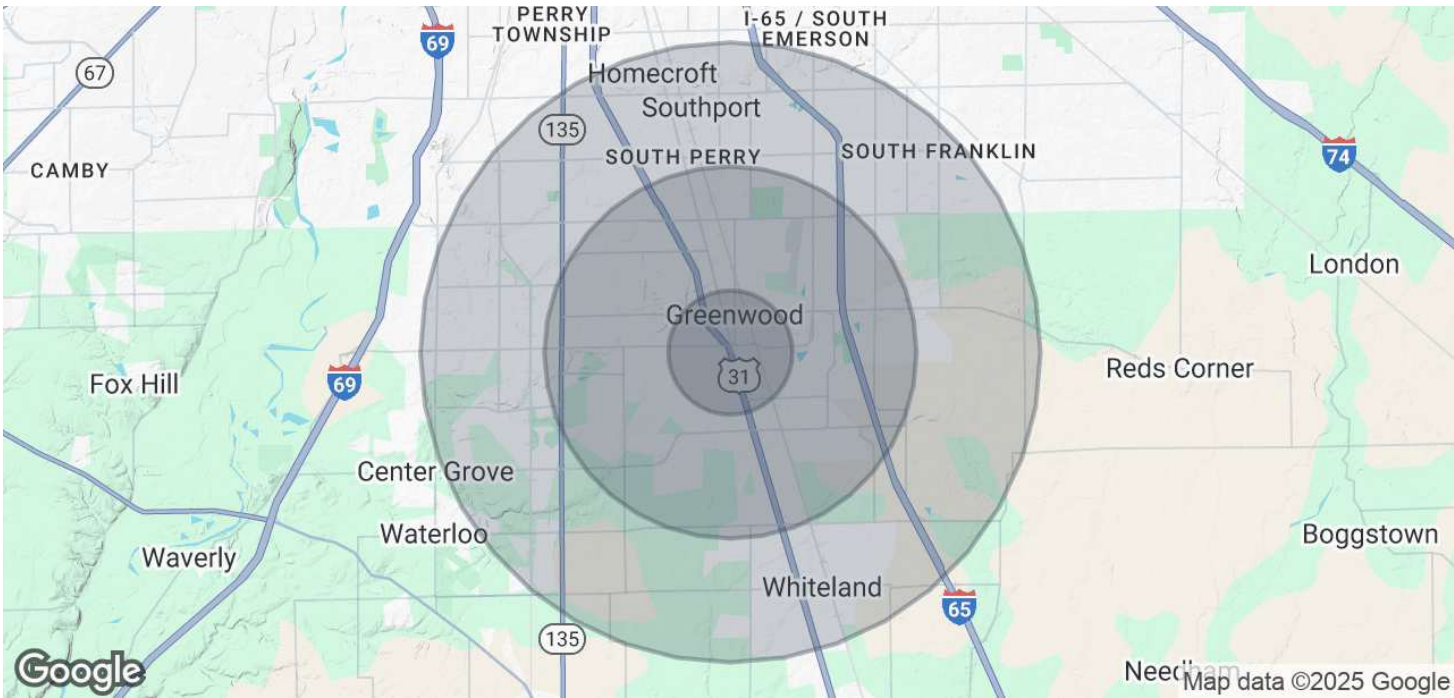
BETH PATTERSON, CCIM
Senior Vice President | Principal
317.663.6558
bpatterson@bradleyco.com



800 S US 31, GREENWOOD, IN 46143

LEASE

RETAIL



POPULATION	1 MILE	3 MILES	5 MILES
Total Population	11,386	75,643	156,725
Average Age	40	38	39
Average Age (Male)	39	37	37
Average Age (Female)	42	40	40
HOUSEHOLDS & INCOME	1 MILE	3 MILES	5 MILES
Total Households	4,711	29,709	59,888
# of Persons per HH	2.4	2.5	2.6
Average HH Income	\$87,231	\$95,908	\$103,180
Average House Value	\$226,457	\$265,200	\$290,280

Demographics data derived from AlphaMap

BETH PATTERSON, CCIM
Senior Vice President | Principal
317.663.6558
bpatterson@bradleyco.com