

INTRODUCING
8001 FORBES PL
SPRINGFIELD, VA 22151

IDEALLY LOCATED W/EASY
ACCESS TO I-95/I-395/I-495

1,700 RSF - 8,640 RSF AVAILABLE

- Proximate location with excellent access to I-95/I-395/I-495
- Full service leases with terms
- On-site owner building management
- Ample free surface parking
- Conveniently located at I-495 & Braddock Road Interchange / Hot lanes
- Onsite EV charging stations
- Deli on 1st floor
- High ceilings and full height windows with lots of natural light
- Office intensive floorplans available
- Outdoor seating

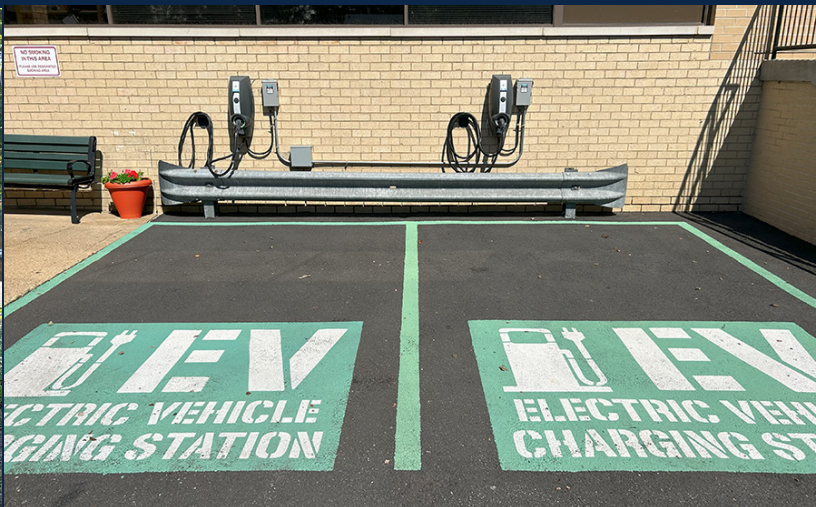


MOLLYE WHEELER

202.328.5136

mwheeler@stoutandteague.com

STOUT&TEAGUE

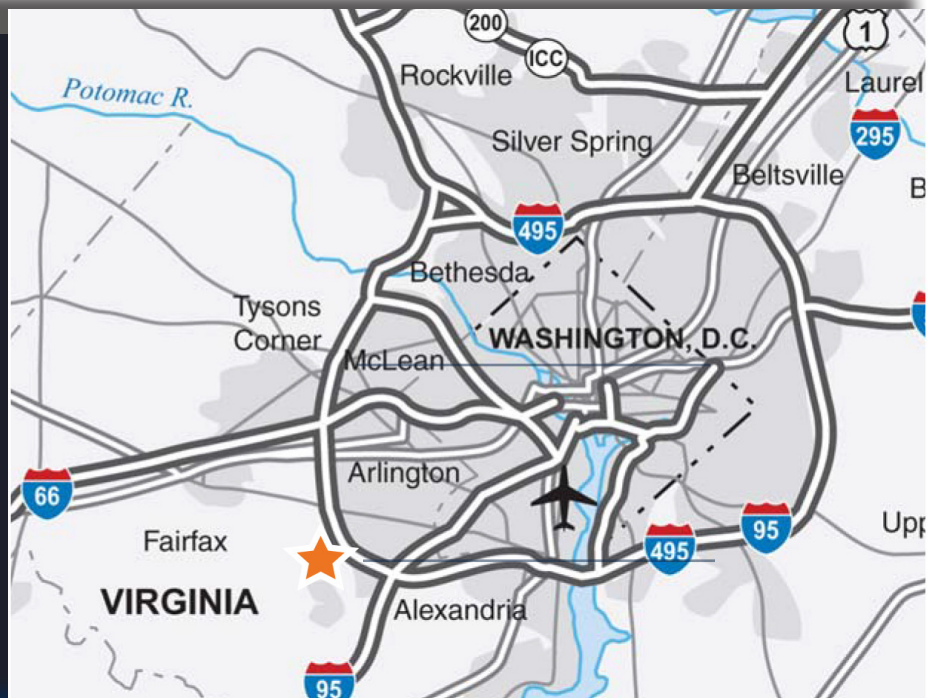


INTRODUCING
8001 FORBES PL

SPRINGFIELD, VA 22151

IDEALLY LOCATED W/EASY
ACCESS TO I-95/I-395/I-495

1,700 RSF - 8,640 RSF AVAILABLE

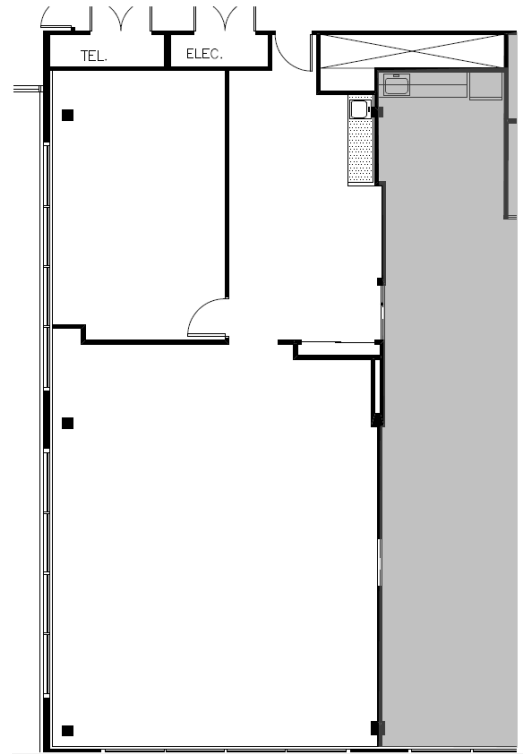
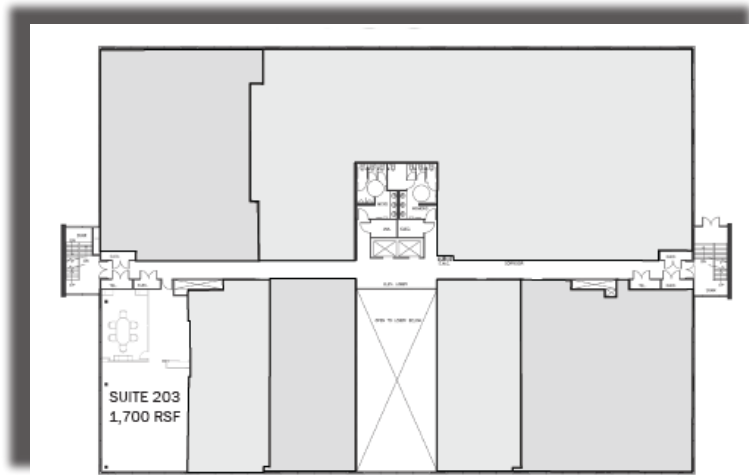


- ★ The White House: 18.1M | 27 MIN
- ★ Springfield Town Center: 4.7M | 9 MIN
- ★ Tysons Corner Center: 8.6M | 13 MIN
- ★ National Landing: 13.4 M | 23M
- ★ Springfield Mall: 4.7 M | 9 MIN

STOUT&TEAGUE

SUITE 203

1,700 RSF | AVAILABLE 11/1/25



- 2nd floor corner office space
- Open area
- Conference room
- Pantry

STOUT&TEAGUE



SUITE 300-A

5,837 RSF | VACANT



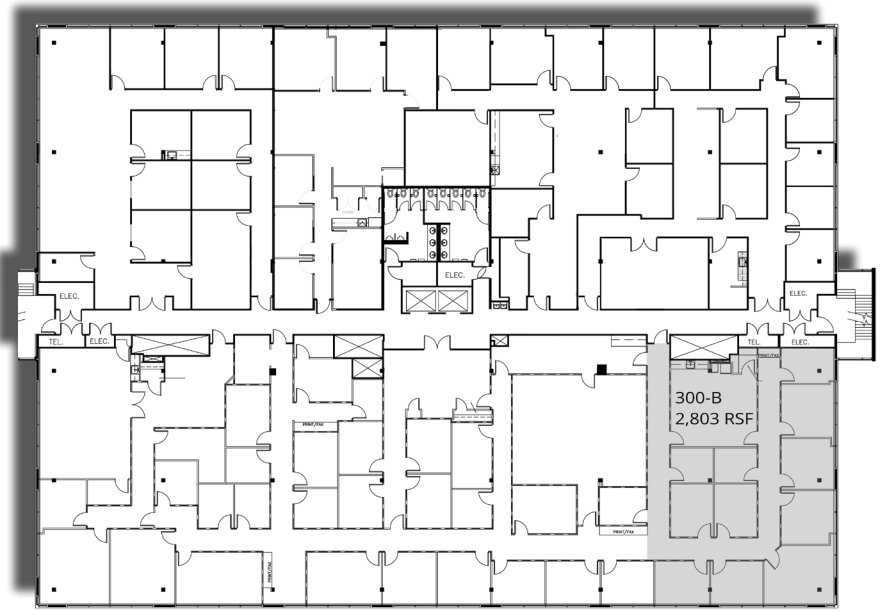
- Signage opportunity in the heart of Springfield
- Top floor (3rd) with direct elevator exposure
- Office/flex/light medical space
- Private offices
- Conference rooms
- Work room
- Expansion opportunities with adjacent space (300-B) up to approx 8,640 RSF

STOUT&TEAGUE



SUITE 300-B

2,803 RSF | VACANT



- Signage opportunity in the heart of Springfield
- Corner office suite on top (3rd) floor
- 7 exterior offices, 4 interior offices
- Expansive pantry
- Expansion opportunities with adjacent space (300-A) up to approx 8,640 RSF

STOUT&TEAGUE



SUITE 305

3,782 RSF | 90-120 DAYS



- Corner office with generous windowline and tons of natural light
- 7 offices
- Large open work area
- Reception
- Pantry
- 12 person conference room

STOUT&TEAGUE

