



MONARCH

CORPORATE CENTER

9909 & 9915 Mira Mesa Boulevard, Scripps Ranch | San Diego, CA 92131

CBRE

CBRE, INC.
Broker Lic. 00409987

SCOTT KINCAID
Lic. 01228565
+1 858 546 4691
scott.kincaid@cbre.com

JEB BAKKE
Lic. 00872363
+1 858 546 4603
jeb.bakke@cbre.com

WHY MONARCH?

Scripps Ranch's most prestigious **Class A Office** campus totaling 112,269 SF

9909 Mira Mesa Blvd - 56,227 SF

9915 Mira Mesa Blvd - 56,042 SF

9915

9909



Walkable amenities



Above standard parking ratio and covered parking: 5/1000



Immediate freeway access



Onsite amenities: showers, lockers, common area, conference room and courtyard

SCRIPPS RANCH'S MOST PRESTIGIOUS CLASS A OFFICE CAMPUS



AMENITIES MAP



DRIVE TIMES

5 MIN

Hwy 52 & I-15
Hwy 56 & I-15

15 MIN

Hwy 78 & I-15
UCSD

25 MIN

Downtown San Diego
San Diego International Airport

MONARCH
CORPORATE CENTER

PARKING
STRUCTURE

9915

9909

MIRA MESA BLVD

SCRIPPS RANCH BLVD

TREENA ST.

HIBLER ST.

*NOT SHOWN ON MAP

17. Miramar Lake & Recreation | 18. Hourglass Community Park | 19. Scripps Ranch High School

WALKABLE AMENITIES

1 **COMFORT SUITES/ HOLIDAY INN EXPRESS**

2 **DENNY'S**

3 **SCRIPPS MESA VILLAGE**

Andrea Whitfall Law
Ariana Kabob House
Dentistry - Melinda Marino
Escape at Tiffany Nail/Spa
Loving Hut
Lucky Donuts & Deli
Martinizing Dry Cleaning
Musical Children
Pizza Hut
Shozen BBQ
Upscale Hair Gallery

4 **SCRIPPS MEDICAL CENTER**

Oasis Dental Arts
Play it Again Sports
Scripps Ranch Medical
Clinic

5 **SCRIPPS HILL CENTER**

C's Ice Cream & Deli
Don Lucio's Taco Shop II
Filippi's Pizza Grotto
Nail Time & Spa
Scripps Ranch Liquor

6 **SCRIPPS MESA RETAIL CENTER**

Air Force Reserve
Bead Cellar
Bobi's Tailoring
Brazilian Jiu Jitsu
California Coast Credit Union
Fame Lashes
Farmers Insurance
Fast Signs
Jhig's Hair Studio
Manila Sunset Grille
Metro PCS
Mongolian Hot Pot
Neal Pham Dental
Phat's Beauty Supply
ShareTea
1st American Mortgage & Realty

7 **SCRIPPS RANCH SHOPPING CENTER**

Black Mountain Bicycles
Bliss Dental Arts
Board & Brew
Brüski Burgers and Brew
Calibanzo Hummus & Grill
Chuck E. Cheese's
C2 Education
Gilmore Orthodontics
Grace Threading
Gyu-Kaku Japanese BBQ Restaurant
Hair Dynamics
Himalayan Grill
Insight Dermatology
Kappa Sushi
Karate - United Self Defence
KoKo Fit Club
Moon Nails & Spa
Scripps Paediatric Dentist
Sprint
Super Cuts
Trader Joe's
Value Cleaners

GENERAL AREA AMENITIES

8 **H MART SHOPPING CENTER**

Applebee's
Daiso Japan
Excellent Cleaners
El Patron
Fantastic Sams
Go Go Sushi & Ramen
Golden State Seafood
GNC
H&R Block
H Mart
In-N-Out Burger
Metro PCS
North Island Credit Union
Paris Baguette Cafe
Scripps Mesa Orthodontics
Shell Gas Station
The Fancy Fish
The Kebab Shop
The UPS Store
US Bank

9 **MIRA MESA SQUARE**

Arco
Big Lots
Commercial Bank
Jack in the Box
Lucky Seafood
Navy Federal Credit Union

10 **MIRA MESA MARKET CENTER**

Barnes & Noble
Bath & Body Works
Buca di Beppo
CVS
Daphne's California Greek
Empire Beauty Supply & Salon
FedEx Office
Island's Restaurant
Jamba Juice
Jersey Mike's Subs

Men's Wearhouse
Mimi's Cafe
Mission Federal Credit
Union
O's American Kitchen
Old Navy
On The Border Mexican
Grill
Panera Bread
Pick Up Stix
Ross Dress for Less
Rubio's Coastal Grill
Starbucks
Tilly's
T-Mobile
Verizon Wireless

11 **EDWARDS MIRA MESA 18 IMAX**

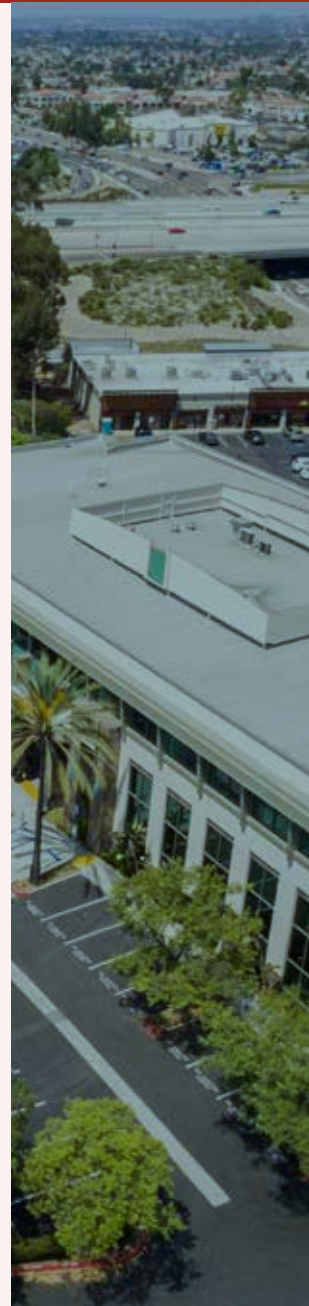
12 **HOME DEPOT**

13 **SMART & FINAL EXTRA!**

14 **SAN DIEGO MIRAMAR COLLEGE**

15 **BEST BUY**

16 **JEROME'S FURNITURE**



FEATURES



Easy access from Mira Mesa Boulevard, Scripps Ranch Boulevard or Trenea Street.



New signalized intersection at the entrance to the project on Mira Mesa Boulevard.



Walk to lunch/coffee! Adjacent to SR Shopping Center with retail, dining and service amenities anchored by Trader Joe's and short walk to Mira Mesa Market Center with tenants including Islands, On the Border, Jamba Juice, Starbucks, Pick up Stix and Rubios. See amenities map for full listing.



Two-level atrium lobbies impress even the most discerning client.



Take advantage of nearby walking trails along Lake Miramar.



Showers and lockers located in each building on the ground floor.



Common area conference room available for tenants at no additional charge.



Above standard parking ratio (5/1,000), partially covered.



Centrally located in the I-15 Corridor with immediate access to Interstate 15 and Highways 52, 56 & 163.



Located along 4 major regional public transportation routes and a Park & Ride Station (20, 31, 921, 964).



Central courtyard with dining tables.



Monument signage available.



Wrap around glass exterior and low core factor allows for an abundance of natural light and efficient space.

AVAILABILITIES



9909 MIRA MESA BLVD

SUITE 300

Prestigious glass double door entry off of lobby. Suite features reception area, window-line and interior offices with glass sidelights, conference room, breakroom, storage, IT room and large open area. Building top signage available and existing FF&E potentially available.

Size: 12,585 RSF | **Vacant**
(divisible to 1,964 RSF)

Price: \$2.85/SF + Electricity

[VIEW FLOOR PLAN](#) 

[VIEW SUITE VIDEO](#) 

SUITE 320

Suite features reception, 2 private offices, coffee bar/work area and open office area. Suite has LVT flooring.

Size: 1,160 RSF | **12/1/2024**

Price: \$2.85/SF + Electricity

AVAILABILITIES



9915 MIRA MESA BLVD

SUITE 140

Corner suite with reception area, conference room, 5 window-line offices, large open area, work area and electrical/IT room.

Size: 2,159 RSF | **Vacant**

Price: \$2.85/SF + Electricity

[VIEW FLOOR PLAN](#) 



FLOOR PLANS

AS BUILT

VIEW SUITE VIDEO 

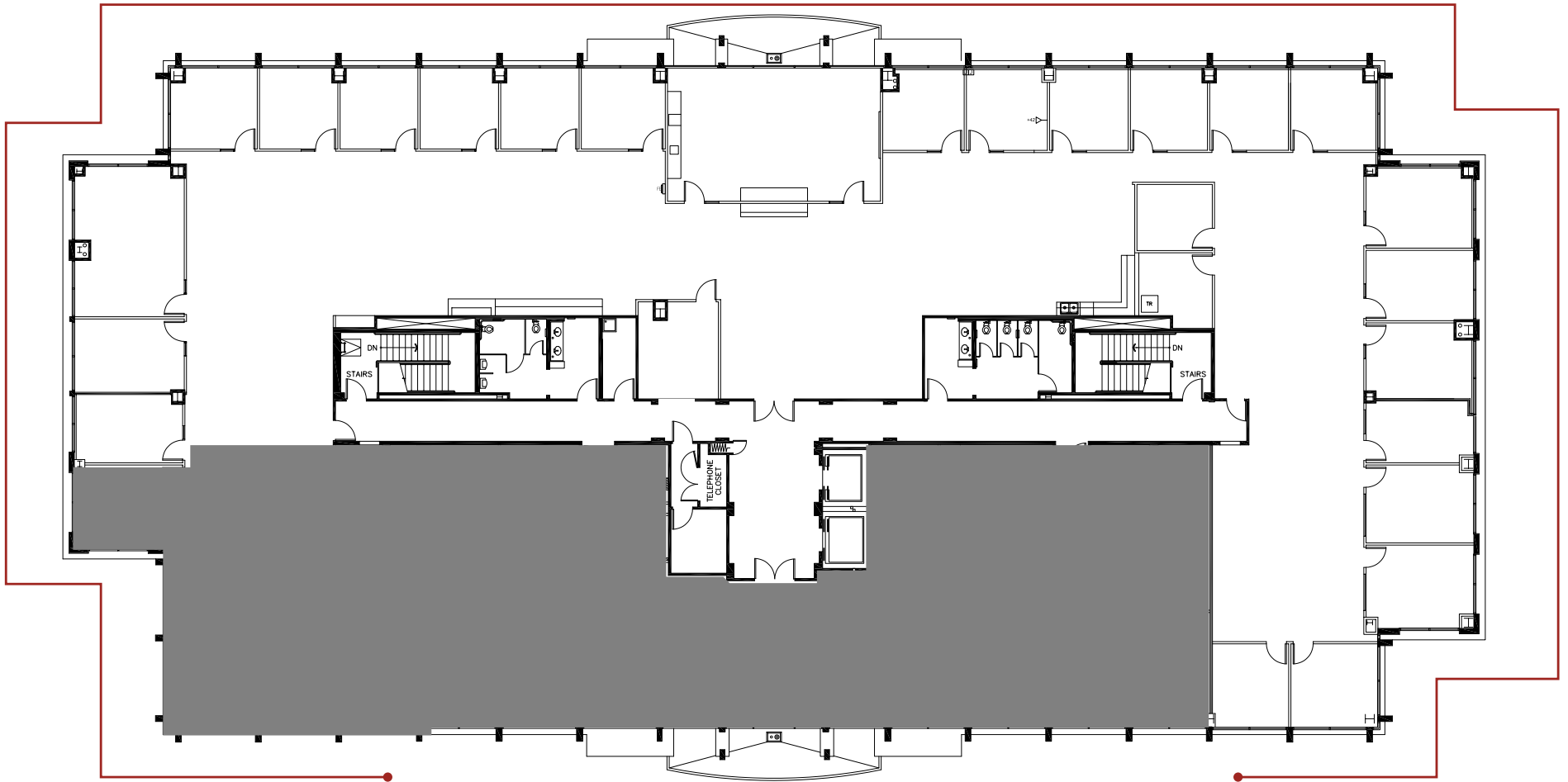


9909 MIRA MESA BLVD | SUITE 300

Prestigious glass double door entry off of lobby. Suite features reception area, 30 window-lined office and interior offices with glass sidelights, conference room, breakroom, storage, IT room and large open area. Building Top Signage Available and existing FF&E potentially available.

12,585 RSF (divisible to 1,964 RSF)

Glass Line



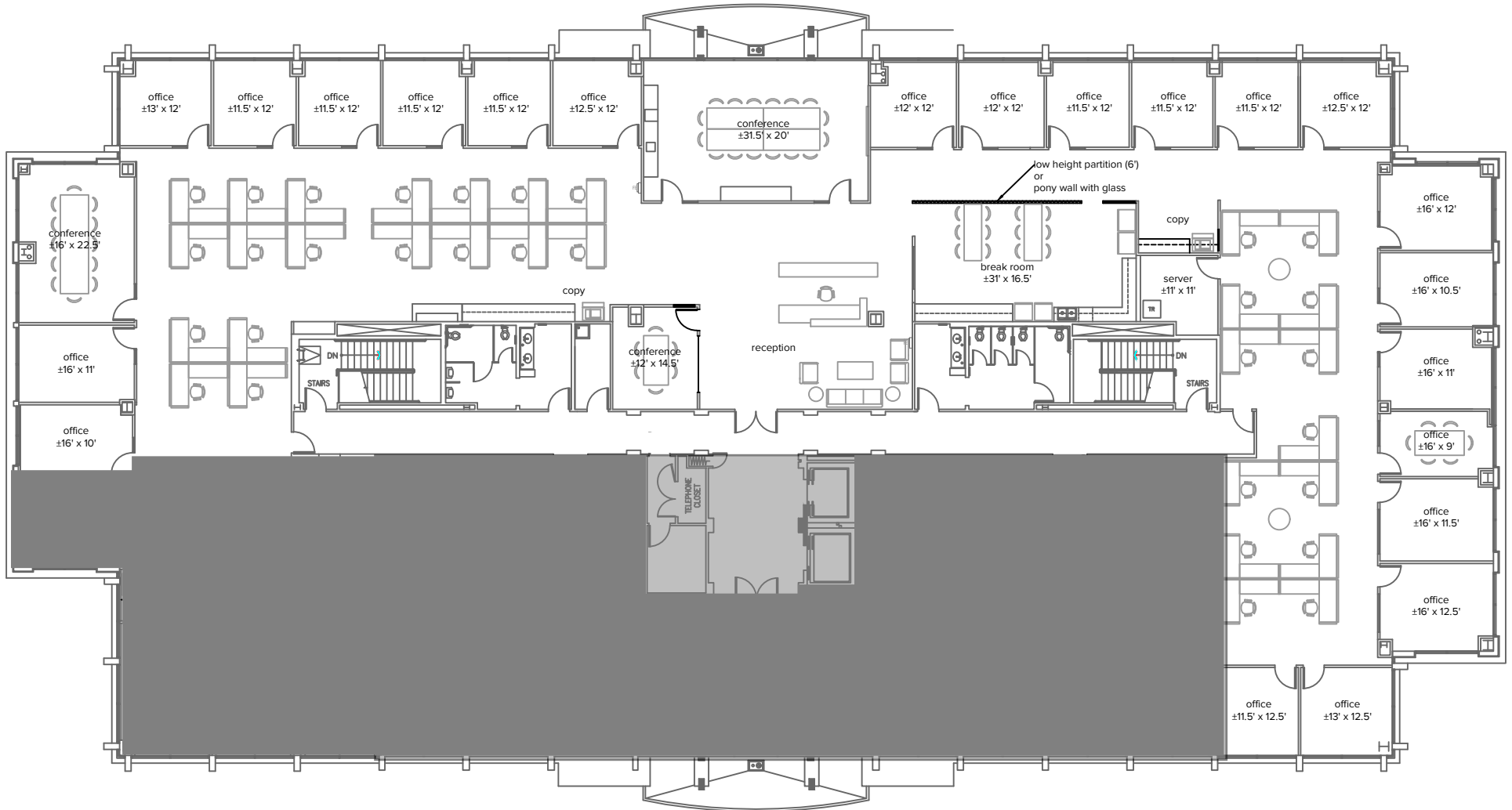
FLOOR PLANS

PROPOSED PLAN

9909 MIRA MESA BLVD | SUITE 300

Glass double door entry off of lobby. Suite features reception area, window-line and interior offices with glass sidelights, conference room, breakroom, storage, IT room and large open area. Building Top Signage Available and existing FF&E potentially available.




12,585 RSF

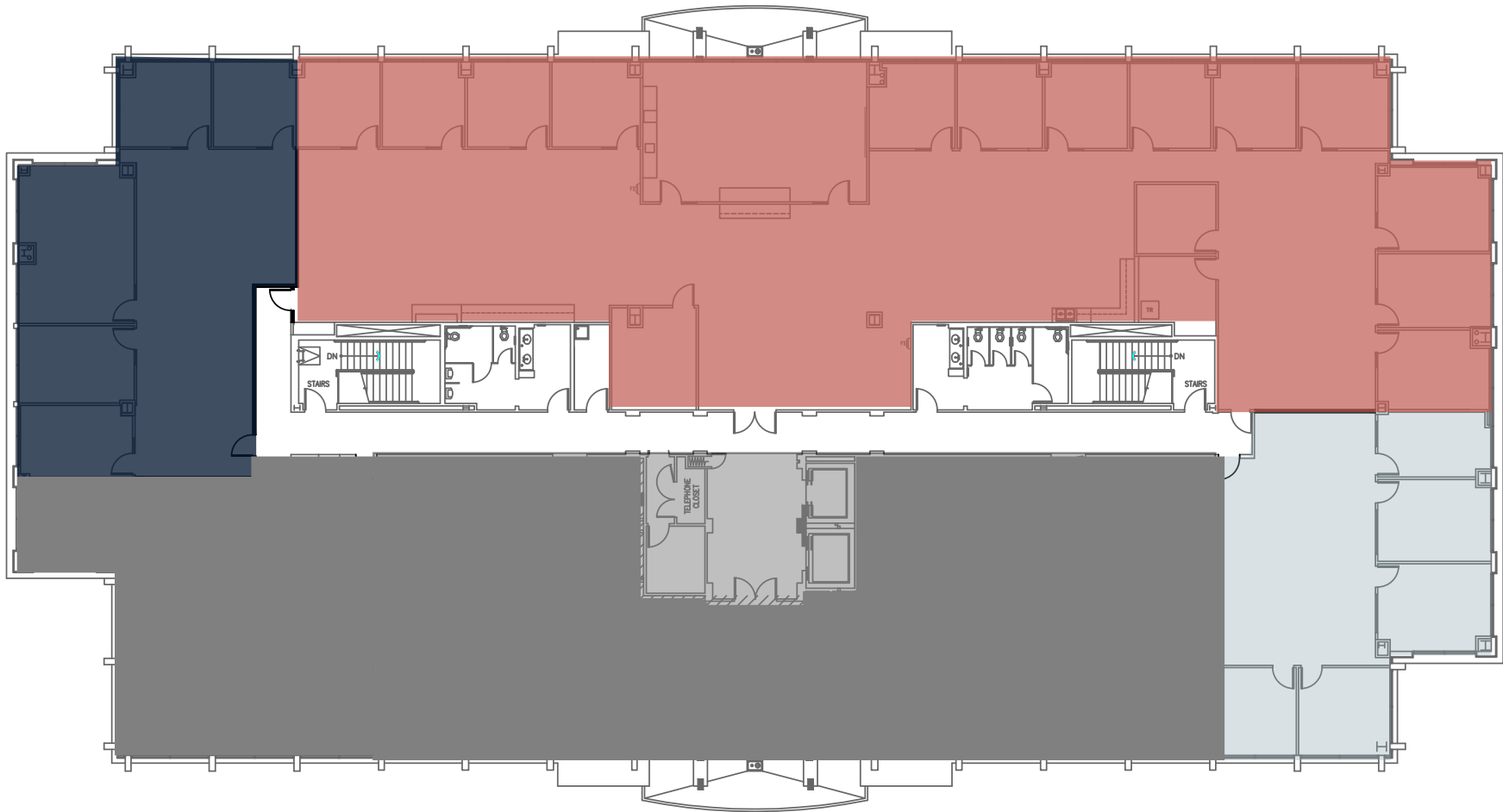


FLOOR PLANS

9909 MIRA MESA BLVD | SUITE 300

PROPOSED DIVISIBILITY PLAN




	2,304 RSF
	8,317 RSF
	1,964 RSF

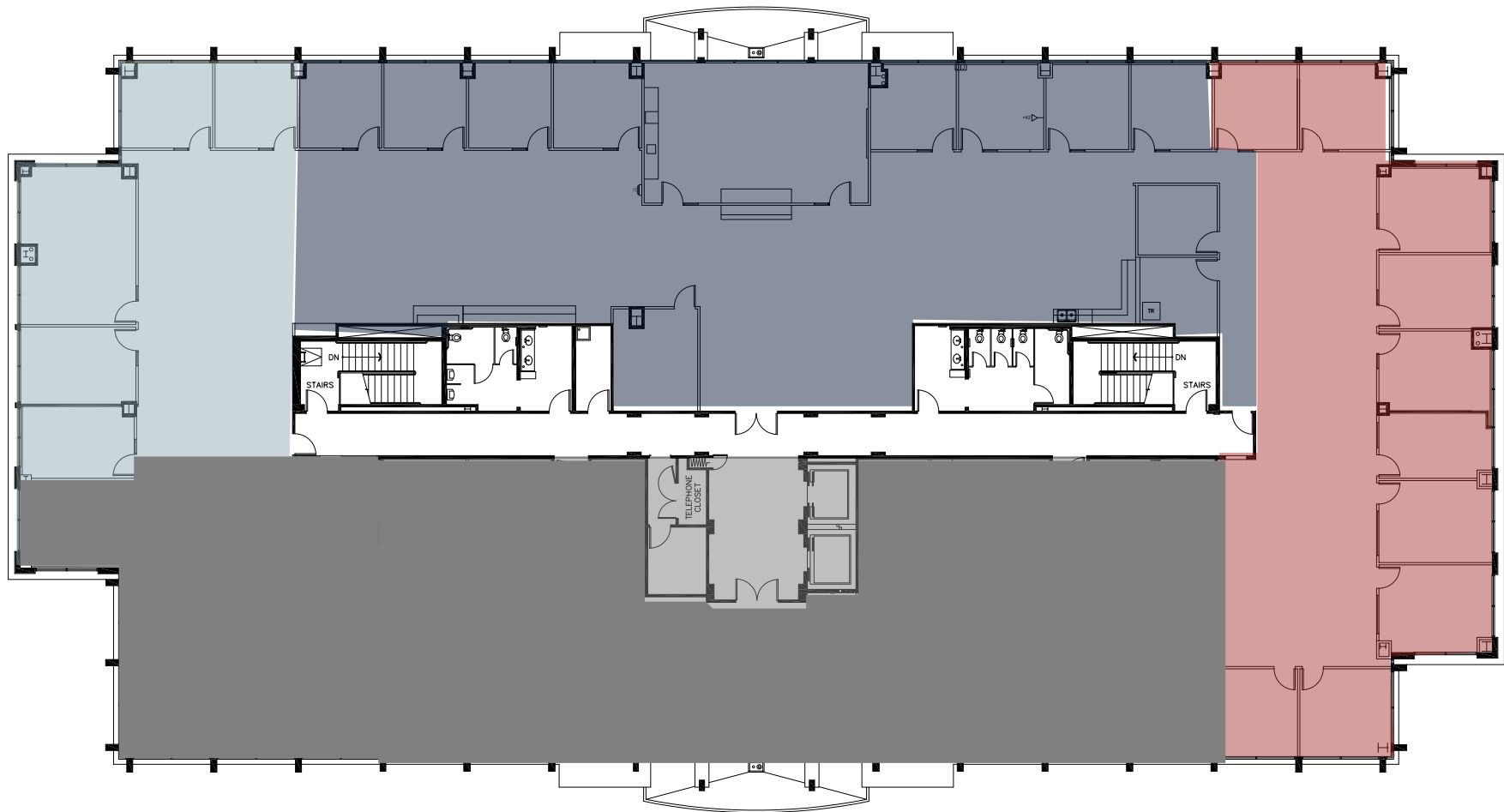


FLOOR PLANS

9909 MIRA MESA BLVD | SUITE 300

PROPOSED DIVISIBILITY PLAN

	2,426 RSF
	6,442 RSF
	3,717 RSF



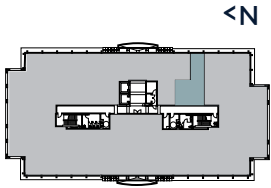
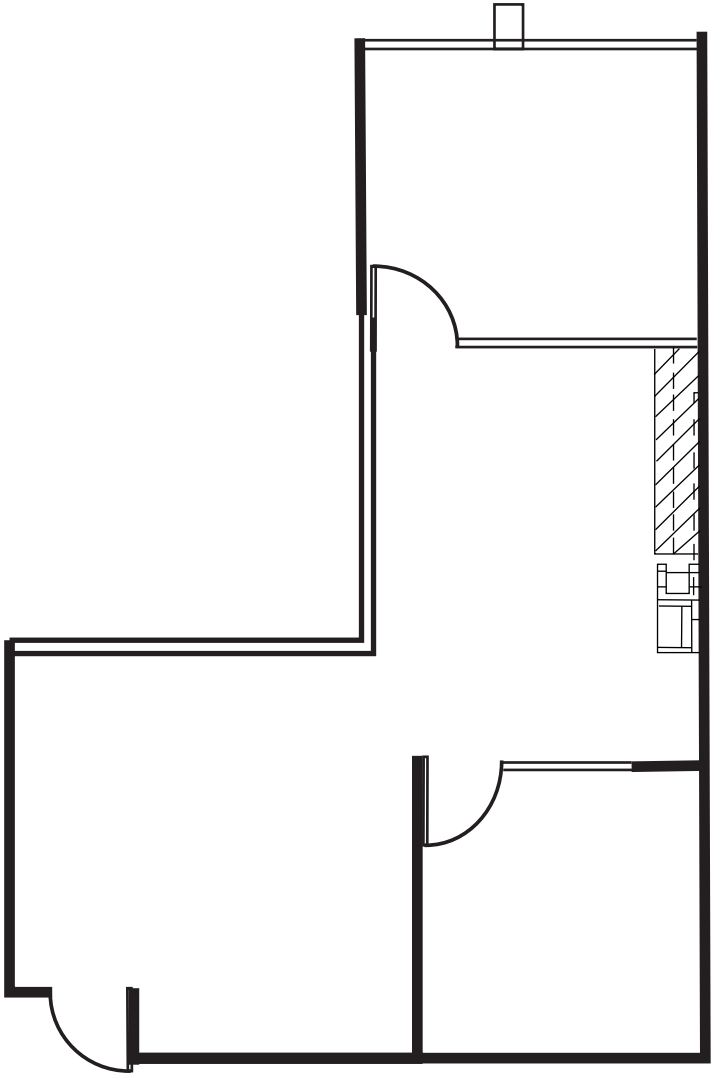
FLOOR PLANS

AS-BUILT PLAN

9909 MIRA MESA BLVD | SUITE 320

Suite features reception, 2 private offices, coffee bar/work area and open office area. Suite has LVT flooring.

1,160 RSF - Available 12/1/2024



FLOOR PLANS

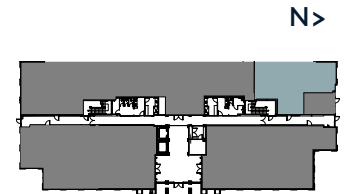
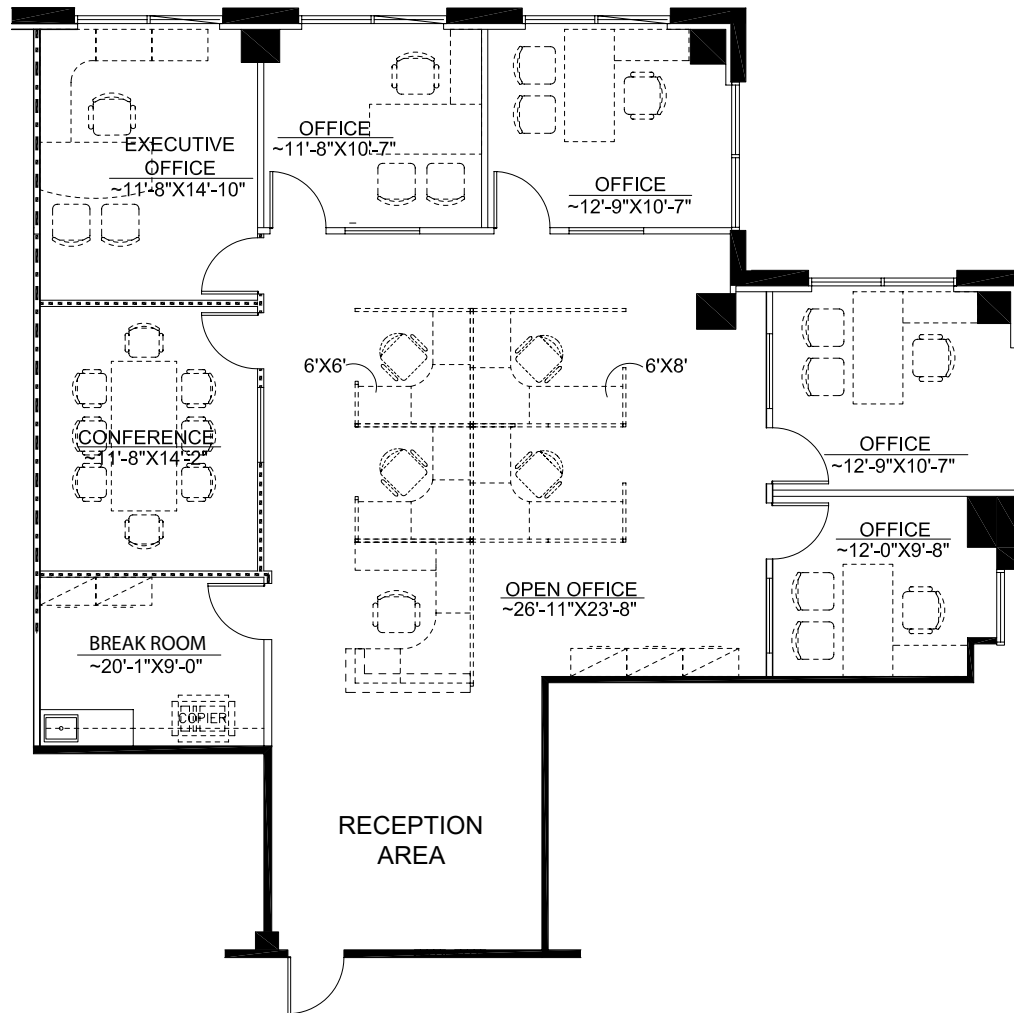
AS-BUILT PLAN

9915 MIRA MESA BLVD | SUITE 140

Corner suite with reception area, conference room, 5 window-line offices, large open area, break room and electrical/IT room.

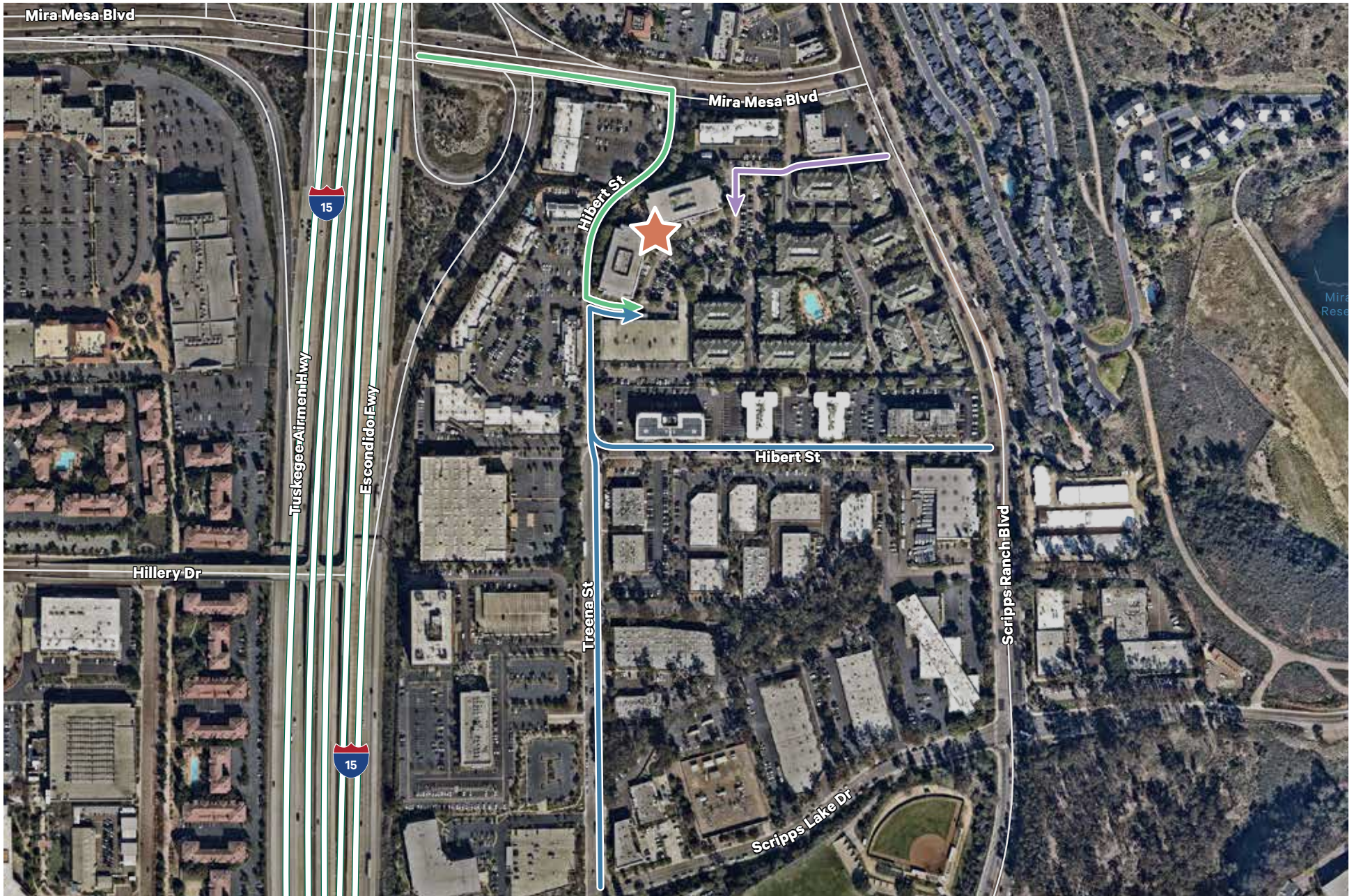
2,159 RSF

Furniture is for illustration purposes only





PROPERTY ACCESS



MONARCH

CORPORATE CENTER

9909 & 9915 Mira Mesa Boulevard, Scripps Ranch | San Diego, CA 92131



CBRE

CBRE, INC.
Broker Lic. 00409987

SCOTT KINCAID
Lic. 01228565
+1 858 546 4691
scott.kincaid@cbre.com

JEB BAKKE
Lic. 00872363
+1 858 546 4603
jeb.bakke@cbre.com

© 2024 CBRE, Inc. All rights reserved. This information has been obtained from sources believed reliable, but has not been verified for accuracy or completeness. You should conduct a careful, independent investigation of the property and verify all information. Any reliance on this information is solely at your own risk. CBRE and the CBRE logo are service marks of CBRE, Inc. All other marks displayed on this document are the property of their respective owners, and the use of such logos does not imply any affiliation with or endorsement of CBRE. Photos herein are the property of their respective owners. Use of these images without the express written consent of the owner is prohibited.