



Specifications

Classic Car Dealership with Office, Showroom, Storage Space for Vehicles

±10,082 SF (2 Floors, Excluding Cellar)
TOTAL BUILDING SIZE - 2 BUILDINGS

±1.51 AC (Block 23, Lot 3)
TOTAL ACREAGE

12' – 14' Clear
CEILING HEIGHTS

185' Along Main Street
FRONTAGE

VN, Village Neighborhood
ZONING

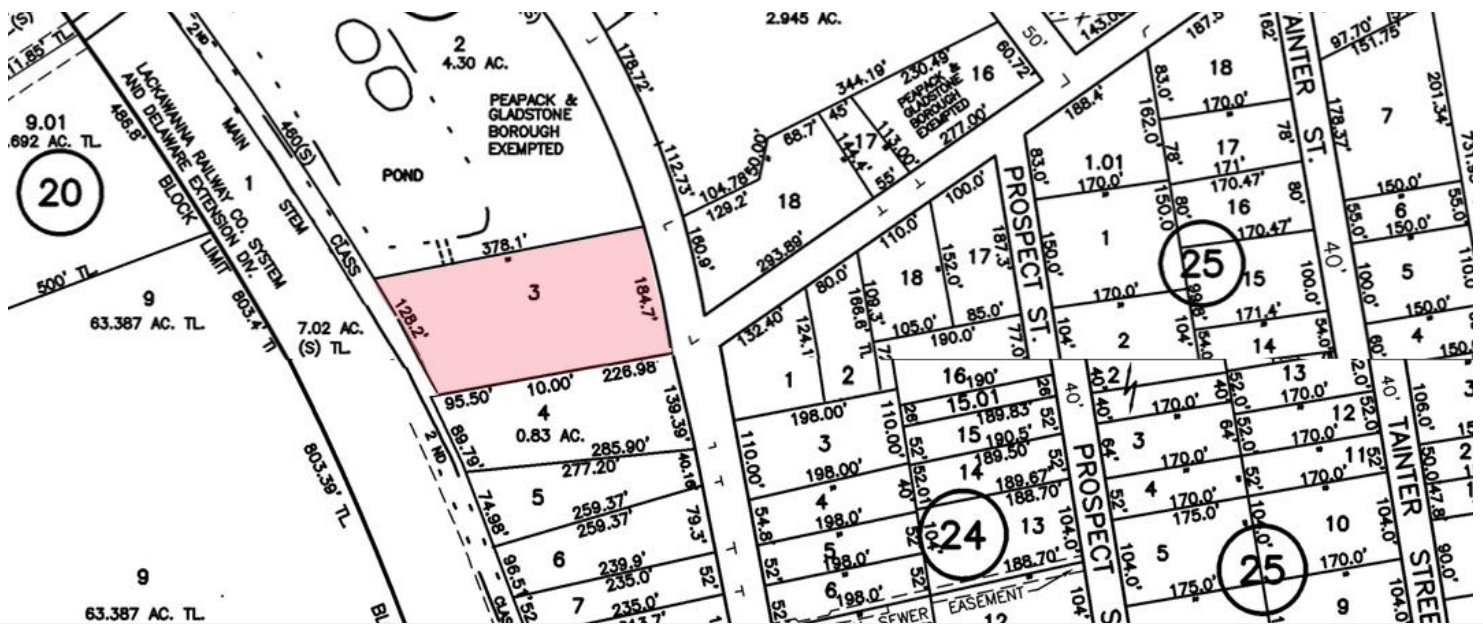
Mixed-Use, Retail, Service and Repair,
Personal Service, Other Various
Commercial Uses
PERMITTED USES

\$43,187.10
TAXES (2025)

\$2,950,000
SALE PRICE

For additional property information or to arrange an inspection, please contact the exclusive brokers:

- Jason M. Crimmins, CCIM, SIOR, Chief Executive Officer, 973.379.6644 x 122, jmcrimmins@blauberg.com
- Alessandro (Alex) Conte, CCIM, SIOR, President, 973.379.6644 x 131, acont@blauberg.com
- Peter J. Murano, Jr., Managing Executive Director, 973.379.6644 x 114, pjmurano@blauberg.com
- Jack Schlenger, Associate, 973.379.6644 x 239, jack@blauberg.com



For additional property information or to arrange an inspection, please contact the exclusive brokers:

Jason M. Crimmins, CCIM, SIOR, Chief Executive Officer, 973.379.6644 x 122, jmcrimmins@blauberg.com

Alessandro (Alex) Conte, CCIM, SIOR, President, 973.379.6644 x 131, acont@blauberg.com

Peter J. Murano, Jr., Managing Executive Director, 973.379.6644 x 114, pjmurano@blauberg.com

Jack Schlenger, Associate, 973.379.6644 x 239, jack@blauberg.com

The information contained herein has been obtained from sources considered to be reliable, but no guarantee of its accuracy is made by this company. In addition, no representation is made respecting zoning, condition of title, dimensions, or any matters of a legal or environmental nature. Such matters should be referred to legal counsel for determination. Terms and conditions are subject to change without prior notice. Subject to errors and omissions.



For additional property information or to arrange an inspection, please contact the exclusive brokers:

Jason M. Crimmins, CCIM, SIOR, Chief Executive Officer, 973.379.6644 x 122, jmcrimmins@blauberg.com

Alessandro (Alex) Conte, CCIM, SIOR, President, 973.379.6644 x 131, aconte@blauberg.com

Peter J. Murano, Jr., Managing Executive Director, 973.379.6644 x 114, pjmurano@blauberg.com

Jack Schlenger, Associate, 973.379.6644 x 239, jack@blauberg.com

The information contained herein has been obtained from sources considered to be reliable, but no guarantee of its accuracy is made by this company. In addition, no representation is made respecting zoning, condition of title, dimensions, or any matters of a legal or environmental nature. Such matters should be referred to legal counsel for determination. Terms and conditions are subject to change without prior notice. Subject to errors and omissions.

FOR SALE OR LEASE | 163-165 MAIN STREET | PEAPACK-GLADSTONE, NJ



For additional property information or to arrange an inspection, please contact the exclusive brokers:

Jason M. Crimmins, CCIM, SIOR, Chief Executive Officer, 973.379.6644 x 122, jmcrimmins@blauberg.com

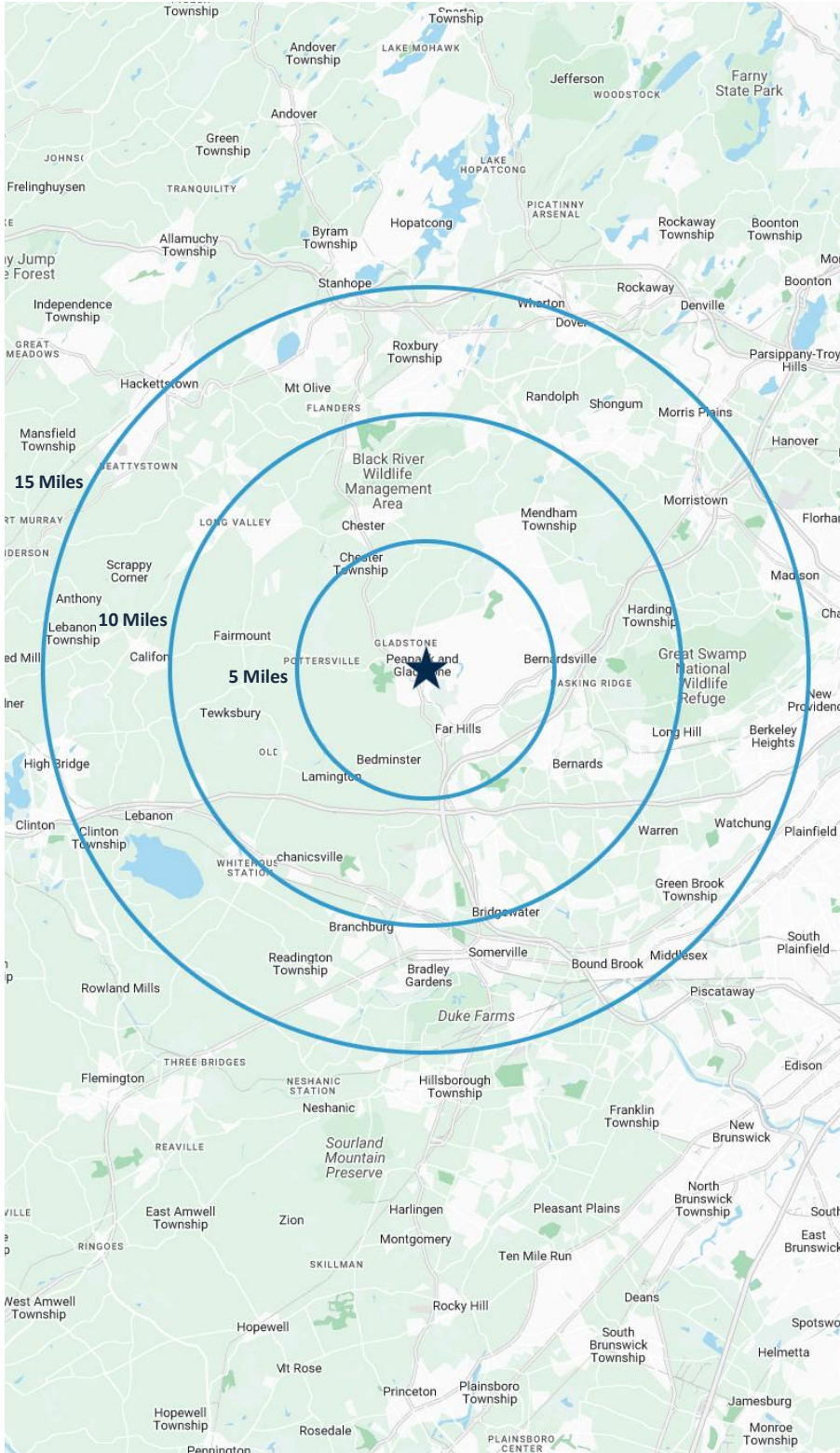
Alessandro (Alex) Conte, CCIM, SIOR, President, 973.379.6644 x 131, aconte@blauberg.com

Peter J. Murano, Jr., Managing Executive Director, 973.379.6644 x 114, pjmurano@blauberg.com

Jack Schlenger, Associate, 973.379.6644 x 239, jack@blauberg.com

The information contained herein has been obtained from sources considered to be reliable, but no guarantee of its accuracy is made by this company. In addition, no representation is made respecting zoning, condition of title, dimensions, or any matters of a legal or environmental nature. Such matters should be referred to legal counsel for determination. Terms and conditions are subject to change without prior notice. Subject to errors and omissions.





5 MILES

- Total Population: 32,590
- Households: 12,576
- Median Household Income: \$195,155
- Average Household Size: 2.6
- Transportation to Work: 17,488
- Labor Force: 26,937

10 MILES

- Total Population: 191,155
- Households: 70,235
- Median Household Income: \$195,301
- Average Household Size: 2.7
- Transportation to Work: 101,720
- Labor Force: 157,072

15 MILES

- Total Population: 814,685
- Households: 298,071
- Median Household Income: \$153,959
- Average Household Size: 2.7
- Transportation to Work: 437,275
- Labor Force: 664,494

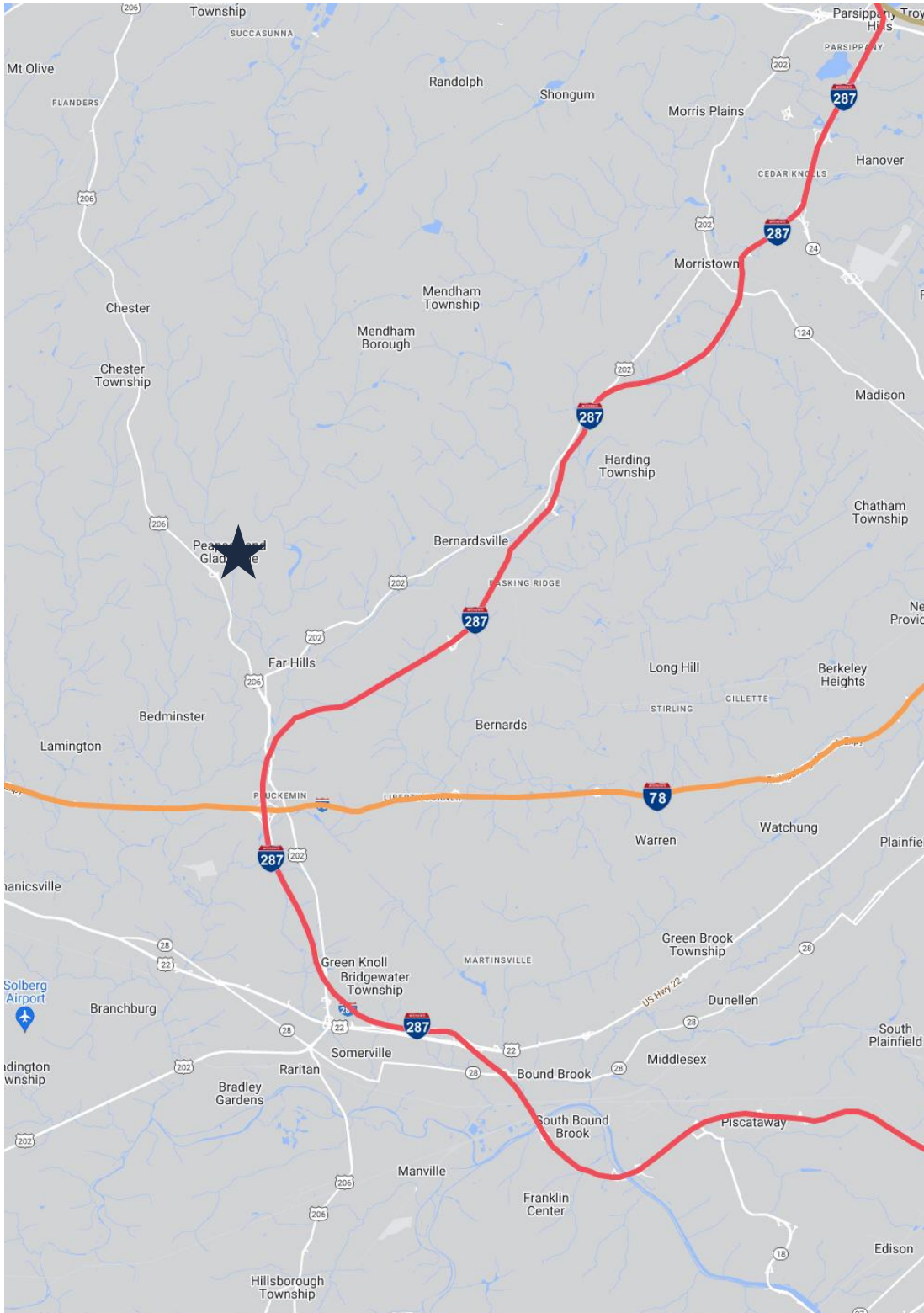
For additional property information or to arrange an inspection, please contact the exclusive brokers:

Jason M. Crimmins, CCIM, SIOR, Chief Executive Officer, 973.379.6644 x 122, jmcrimmins@blauberg.com

Alessandro (Alex) Conte, CCIM, SIOR, President, 973.379.6644 x 131, acont@blauberg.com

Peter J. Murano, Jr., Managing Executive Director, 973.379.6644 x 114, pjmurano@blauberg.com

Jack Schlenger, Associate, 973.379.6644 x 239, jack@blauberg.com



ACCESSIBILITY



1.1 MI
Route 206



4.7 MI
I-287



5.9 MI
I-78



10.0 MI
Route 22

For additional property information or to arrange an inspection, please contact the exclusive brokers:

Jason M. Crimmins, CCIM, SIOR, Chief Executive Officer, 973.379.6644 x 122, jmcrimmins@blauberg.com

Alessandro (Alex) Conte, CCIM, SIOR, President, 973.379.6644 x 131, acont@blauberg.com

Peter J. Murano, Jr., Managing Executive Director, 973.379.6644 x 114, pjmurano@blauberg.com

Jack Schlenger, Associate, 973.379.6644 x 239, jack@blauberg.com