

FOR SUBLEASE - OFFICE SPACE

455 6th Street NW, Winter Haven, FL 33881

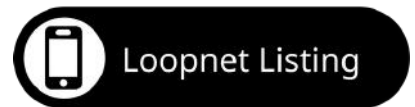


5,481 SF AVAILABLE | SINGLE STORY | 24 SURFACE PARKING SPACES

BELLCORNERSTONE
Commercial Real Estate

FOR MORE INFORMATION:

Aidan Cleghorn
BellCornerstone
315.565.8302
acleghorn@bellcornerstone.com



www.BellCornerstone.com

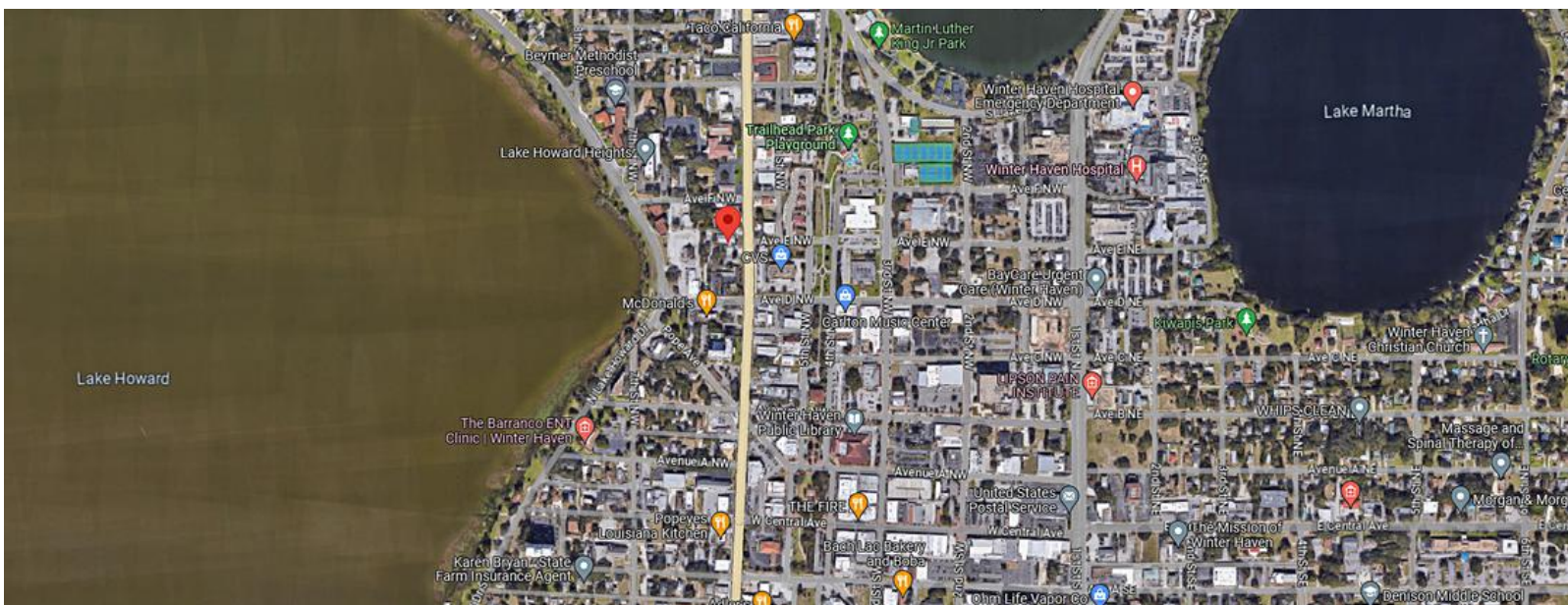
PROPERTY OVERVIEW

455 6th Street NW, Winter Haven, FL



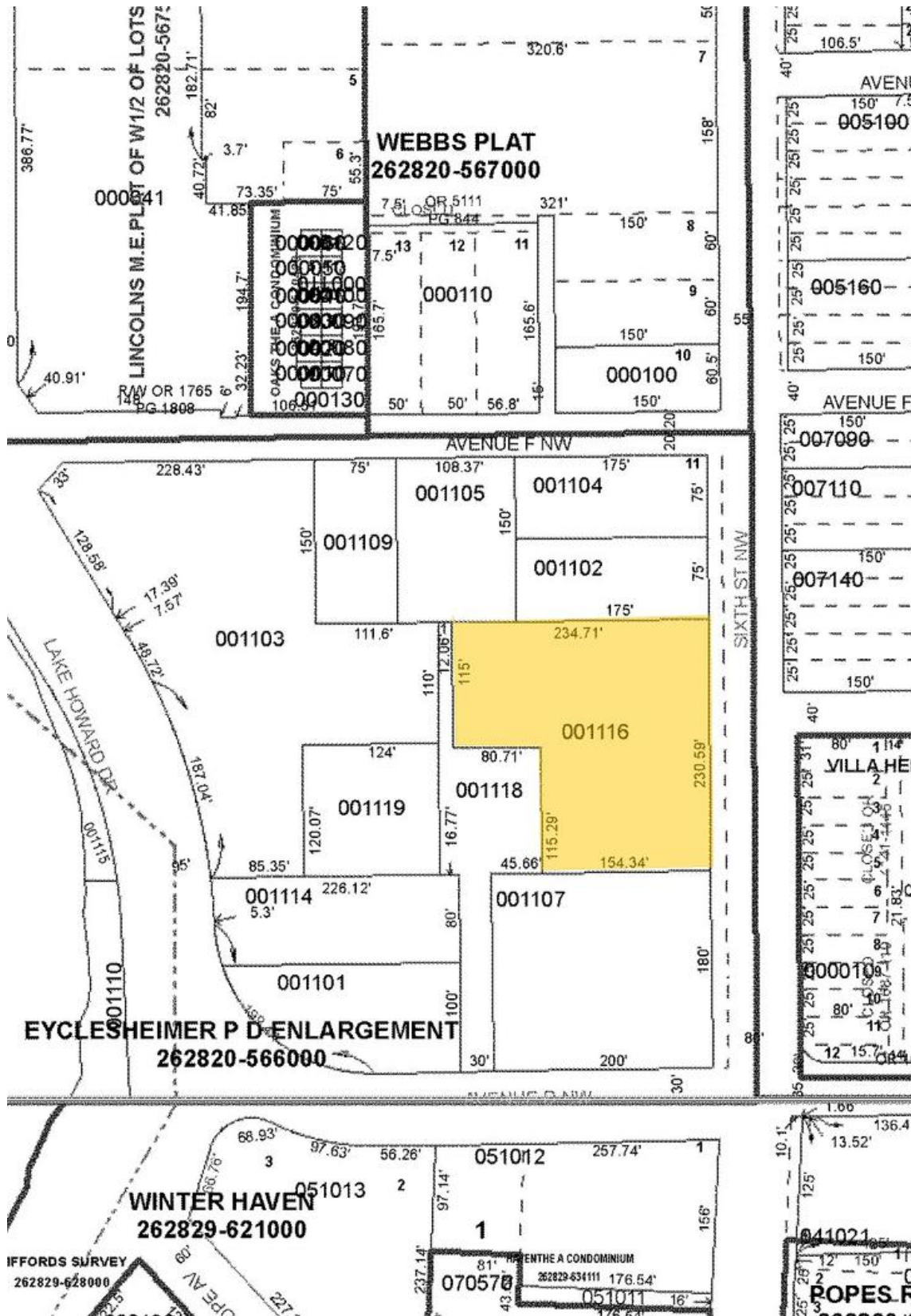
PROPERTY FEATURES

- Property Type:** Office
- Building Class:** Class B
- Available SF:** 5,481 SF
- Building Height:** 1 Story
- Parking:** 24 Surface Parking Spaces

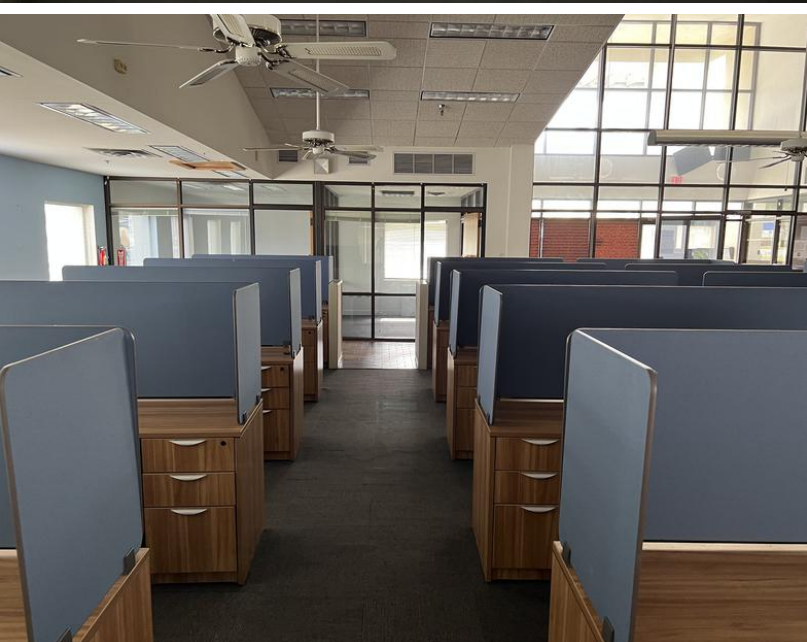
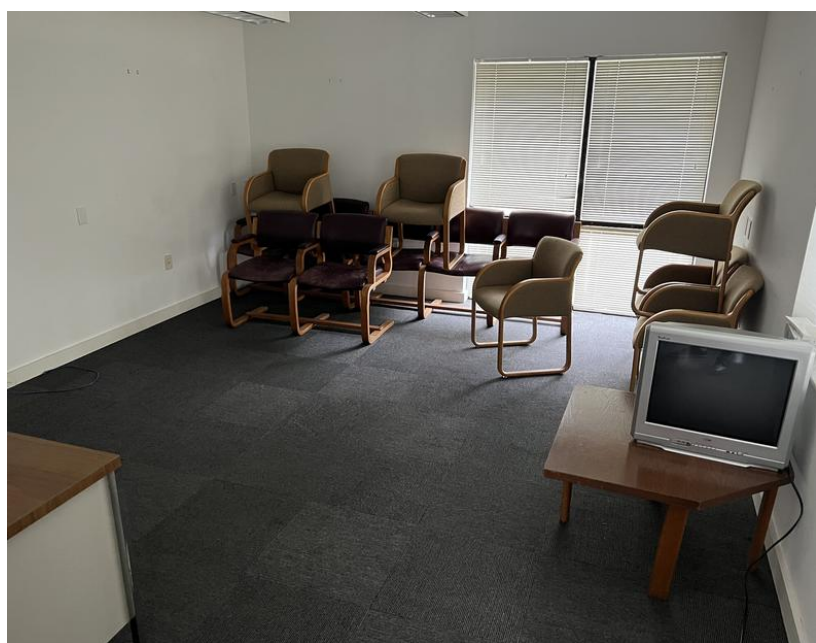


PARCEL MAP

455 6th Street NW, Winter Haven, FL









**455 6th Street NW
Winter Haven, FL**

BELLCORNERSTONE

Commercial Real Estate

FOR MORE INFORMATION:

Aidan Cleghorn
BellCornerstone
315.565.8302
acleghorn@bellcornerstone.com

DISCLAIMER: The information contained in this flyer has been prepared to provide summary information and to establish a preliminary level of interest in the subject property. The information contained herein is for informational purposes only and does not constitute an offer to sell, lease, or sublease, nor is it a solicitation for same.