



Industrial Property For Sale

Palm River Industrial Warehouse - Close to Port
5208 St Paul St, Tampa, FL 33619

For More Information:

813-254-6756 | EXT 83

Michael Braccia, P.A. | mike@baystreetcommercial.com

Scott Shimberg | scott@baystreetcommercial.com





Palm River Industrial Warehouse - Close to Port

5208 St Paul St, Tampa, FL 33619

Executive Summary



OFFERING SUMMARY

Sale Price:	\$4,890,000
Price / SF:	\$94.77
Lot Size:	93,218 SF
Building Size:	51,599 SF
Zoning:	M - Manufacturing
Market:	Tampa-St Petersburg- Clearwater

PROPERTY OVERVIEW

This Palm River / Claire-Mel Manufacturing (M) zoned industrial site is 2.14 acres and consists of two warehouse buildings totaling 51,599 SF inclusive of approximately 9,966 SF of working and partially enclosed canopy area. The main structure is a 40,069 SF warehouse with 19-21 ft clear height, multiple roll-up doors along the rear and sides of the main structure, and contains approximately 3,852 SF of air conditioned 2 story office space renovated in 2017. The rear structure, currently serving as a metal shop, is an 11,530 SF industrial warehouse with 14-16 Ft clear height. The incoming power service to the site is 3 phase (208v – 600 amp). There’s a transfer switch panel for generator power and 240-volt systems that include one 400-amp main breaker panel and two 200-amp panels. The site has access from both the East and West side of the main structure offering full turn access through the central concrete loading yard or can serve as additional lay down open storage area. The property has easy access to the Port and immediate service to Tampa, Brandon, South County, and Sarasota/Bradenton markets.

*Seller currently occupies property and will require 60 days to vacate, post closing.

LOCATION OVERVIEW

Located just east of S. 50th Street / US 41 near the intersection of Causeway Blvd.

For More Information:

813-254-6756 | EXT 83

Property Webpage: www.properties.baystreetcommercial.com/1392225-sale

Michael Braccia, P.A. | mike@baystreetcommercial.com

Scott Shimberg | scott@baystreetcommercial.com



Palm River Industrial Warehouse - Close to Port 5208 St Paul St, Tampa, FL 33619

Additional Photos



For More Information:

813-254-6756 | EXT 83

Property Webpage: www.properties.baystreetcommercial.com/1392225-sale

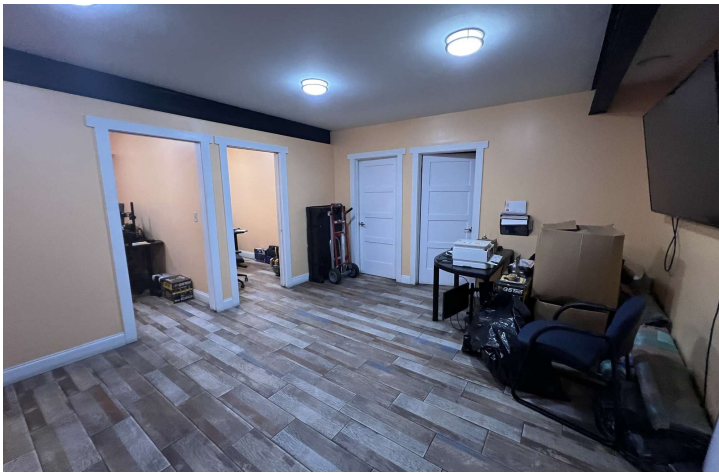
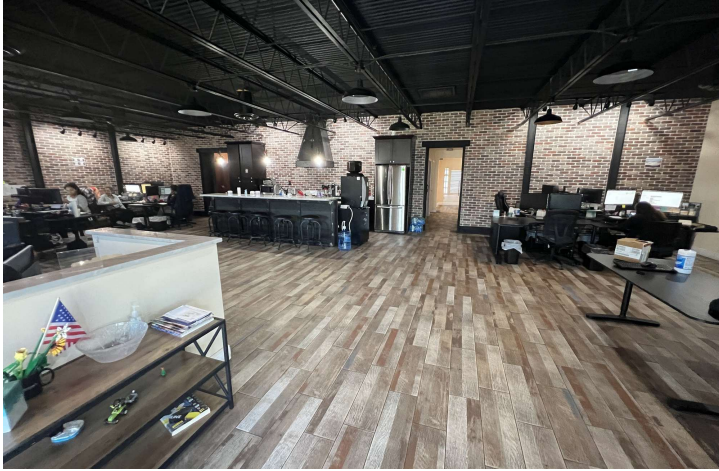
Michael Braccia, P.A. | mike@baystreetcommercial.com

Scott Shimberg | scott@baystreetcommercial.com



Palm River Industrial Warehouse - Close to Port 5208 St Paul St, Tampa, FL 33619

Additional Photos



Bay Street Commercial | 611 West Bay Street | Tampa, FL 33606 | 813.625.2375 | www.baystreetcommercial.com

For More Information:

813-254-6756 | EXT 83

Property Webpage: www.properties.baystreetcommercial.com/1392225-sale

Michael Braccia, P.A. | mike@baystreetcommercial.com

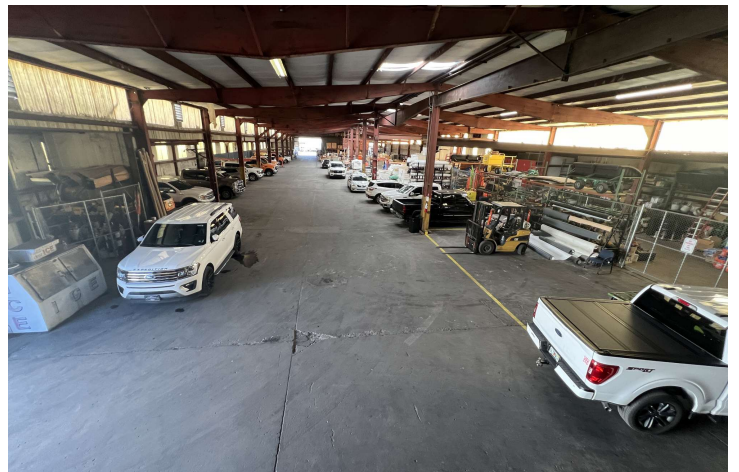
Scott Shimberg | scott@baystreetcommercial.com





Palm River Industrial Warehouse - Close to Port 5208 St Paul St, Tampa, FL 33619

Additional Photos



For More Information:

813-254-6756 | EXT 83

Property Webpage: www.properties.baystreetcommercial.com/1392225-sale

Michael Braccia, P.A. | mike@baystreetcommercial.com

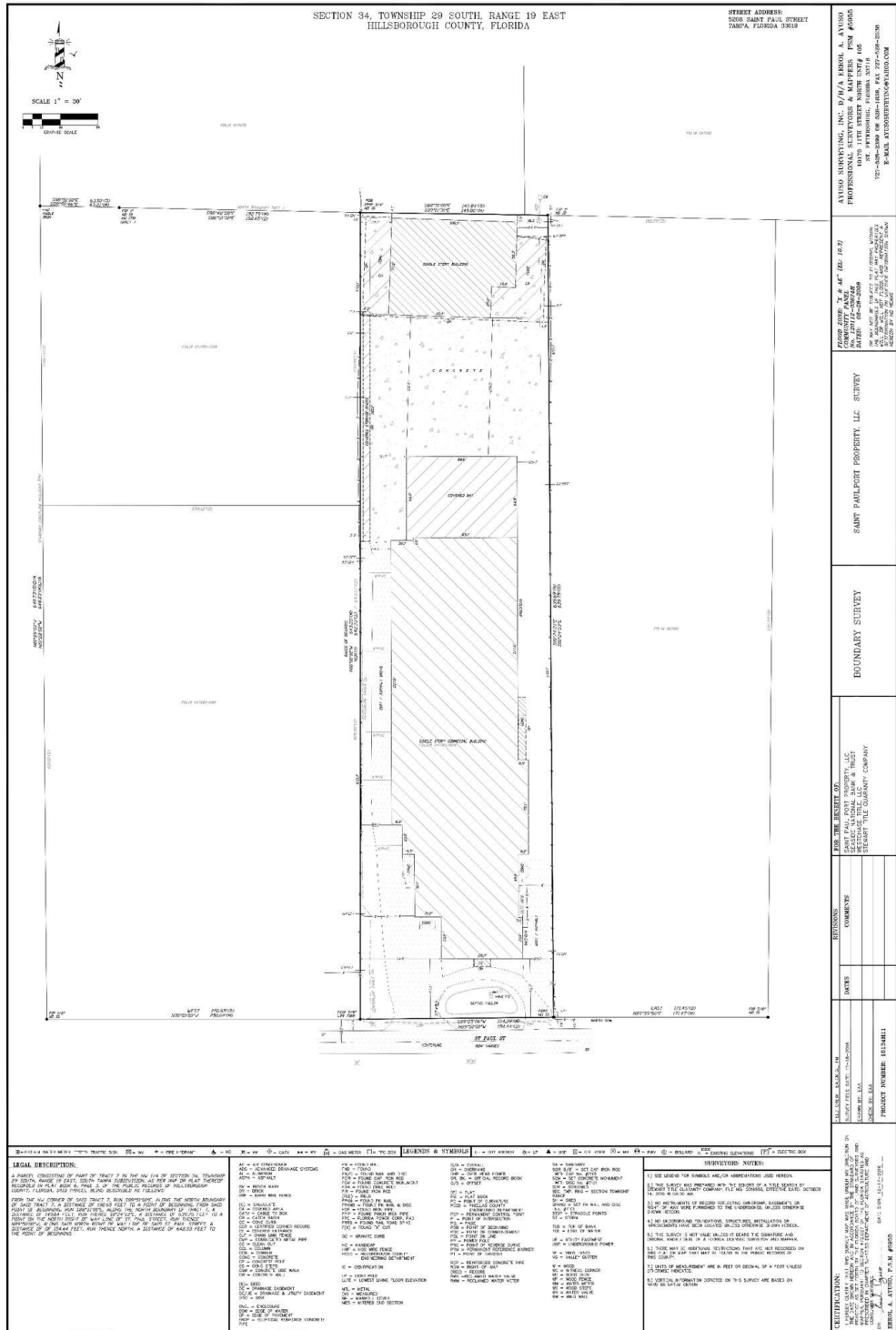
Scott Shimberg | scott@baystreetcommercial.com



Palm River Industrial Warehouse - Close to Port

5208 St Paul St, Tampa, FL 33619

Survey



For More Information:

813-254-6756 | EXT 83

Property Webpage: www.properties.baystreetcommercial.com/139225-sale

Michael Braccia, P.A. | mike@baystreetcommercial.com

Scott Shimberg | scott@baystreetcommercial.com

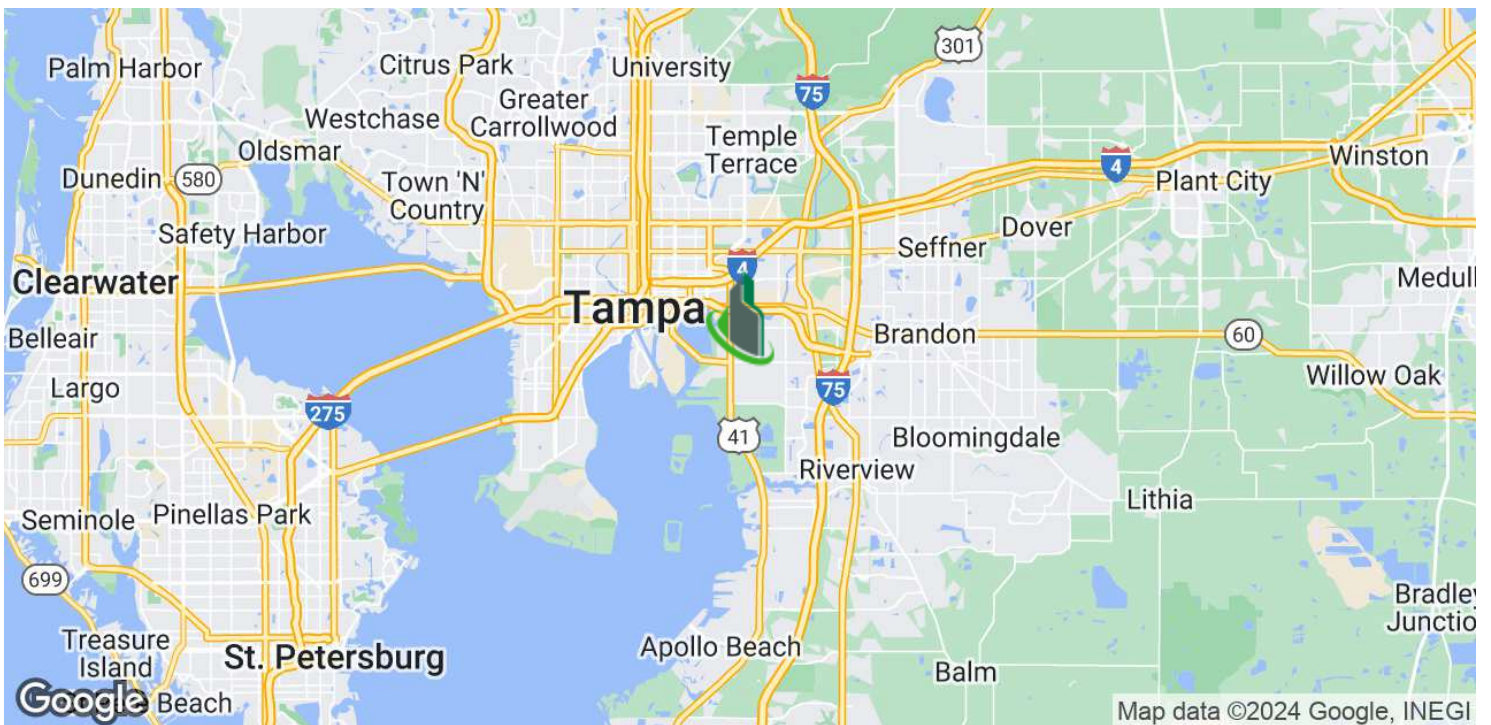
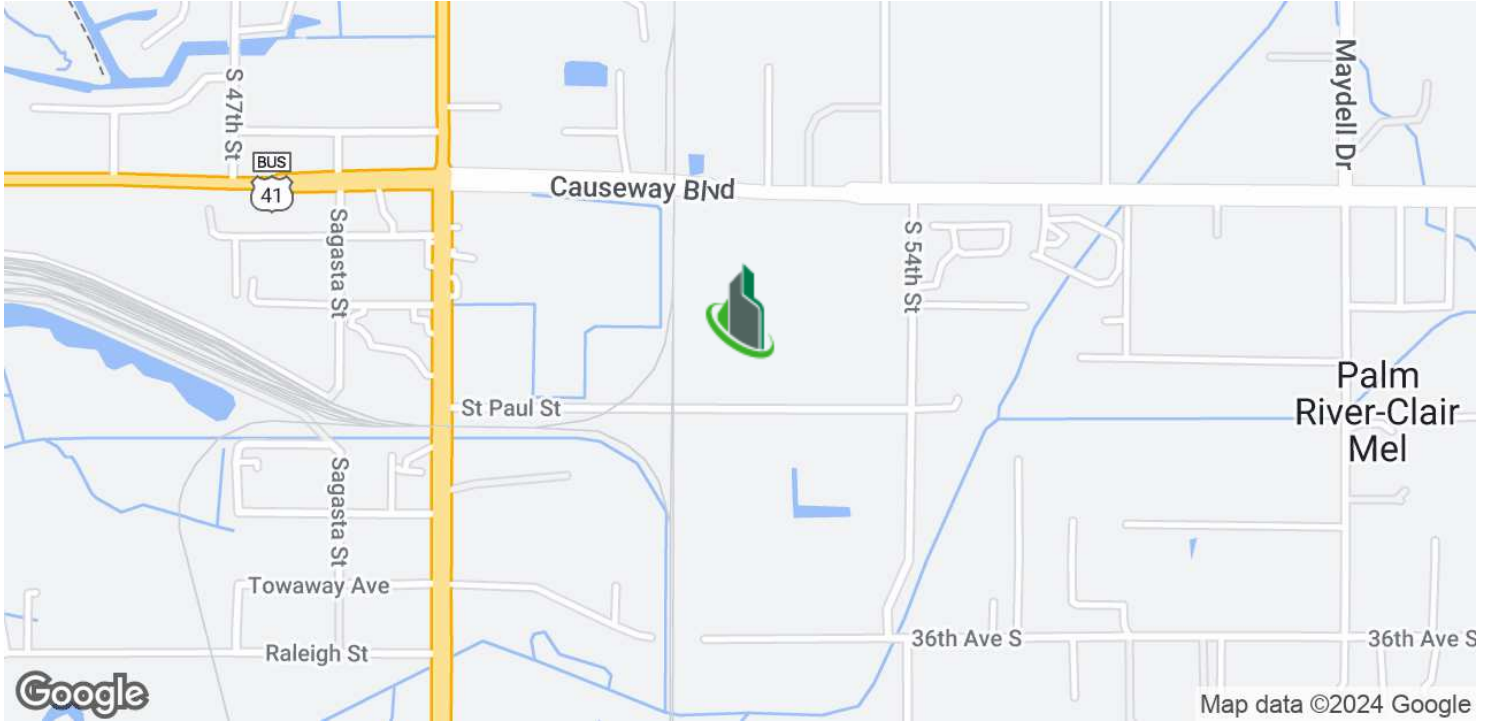




Palm River Industrial Warehouse - Close to Port

5208 St Paul St, Tampa, FL 33619

Location Map



For More Information:

813-254-6756 | EXT 83

Property Webpage: www.properties.baystreetcommercial.com/1392225-sale

Michael Braccia, P.A. | mike@baystreetcommercial.com

Scott Shimberg | scott@baystreetcommercial.com



Palm River Industrial Warehouse - Close to Port 5208 St Paul St, Tampa, FL 33619

Aerial Map



Bay Street Commercial | 611 West Bay Street | Tampa, FL 33606 | 813.625.2375 | www.baystreetcommercial.com

8

For More Information:

813-254-6756 | EXT 83

Property Webpage: www.properties.baystreetcommercial.com/1392225-sale

Michael Braccia, P.A. | mike@baystreetcommercial.com

Scott Shimberg | scott@baystreetcommercial.com

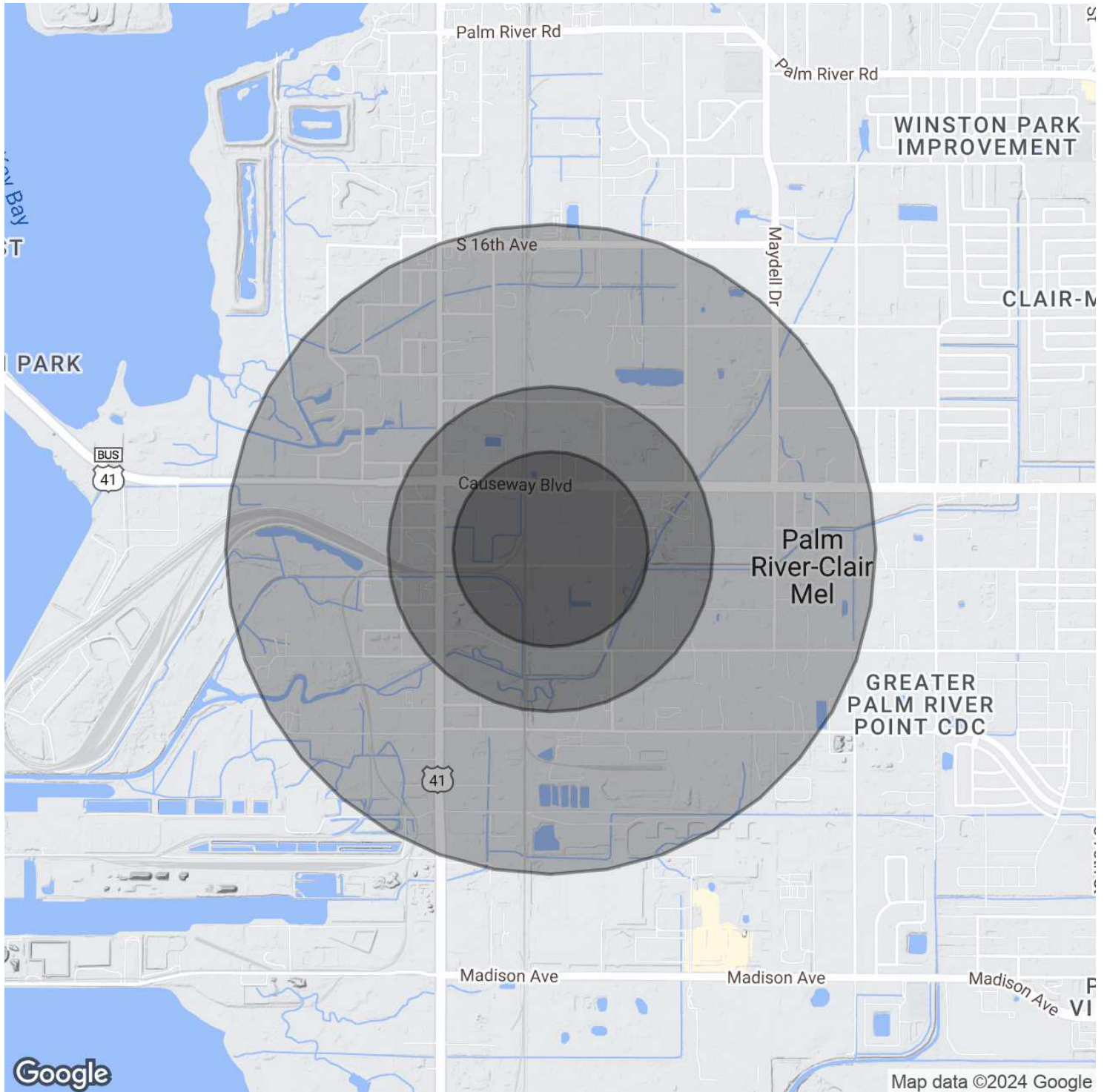




Palm River Industrial Warehouse - Close to Port

5208 St Paul St, Tampa, FL 33619

Demographics Map & Report



For More Information:

813-254-6756 | EXT 83

Property Webpage: www.properties.baystreetcommercial.com/1392225-sale

Michael Braccia, P.A. | mike@baystreetcommercial.com

Scott Shimberg | scott@baystreetcommercial.com





Palm River Industrial Warehouse - Close to Port

5208 St Paul St, Tampa, FL 33619

Demographics Map & Report

POPULATION	0.3 MILES	0.5 MILES	1 MILE
Total Population	51	284	1,791
Average Age	40	40	40
Average Age (Male)	40	40	39
Average Age (Female)	40	40	40
HOUSEHOLDS & INCOME	0.3 MILES	0.5 MILES	1 MILE
Total Households	15	89	616
# of Persons per HH	3.4	3.2	2.9
Average HH Income	\$77,591	\$74,330	\$74,492
Average House Value	\$280,665	\$283,805	\$290,836
ETHNICITY (%)	0.3 MILES	0.5 MILES	1 MILE
Hispanic	60.8%	53.9%	50.4%
RACE	0.3 MILES	0.5 MILES	1 MILE
Total Population - White	19	110	647
% White	37.3%	38.7%	36.1%
Total Population - Black	5	41	379
% Black	9.8%	14.4%	21.2%
Total Population - Asian	1	5	22
% Asian	2.0%	1.8%	1.2%
Total Population - Hawaiian	0	0	2
% Hawaiian	0.0%	0.0%	0.1%
Total Population - American Indian	1	3	16
% American Indian	2.0%	1.1%	0.9%
Total Population - Other	9	45	281
% Other	17.6%	15.8%	15.7%

Demographics data derived from AlphaMap

For More Information:

813-254-6756 | EXT 83

Property Webpage: www.properties.baystreetcommercial.com/1392225-sale

Michael Braccia, P.A. | mike@baystreetcommercial.com

Scott Shimberg | scott@baystreetcommercial.com

