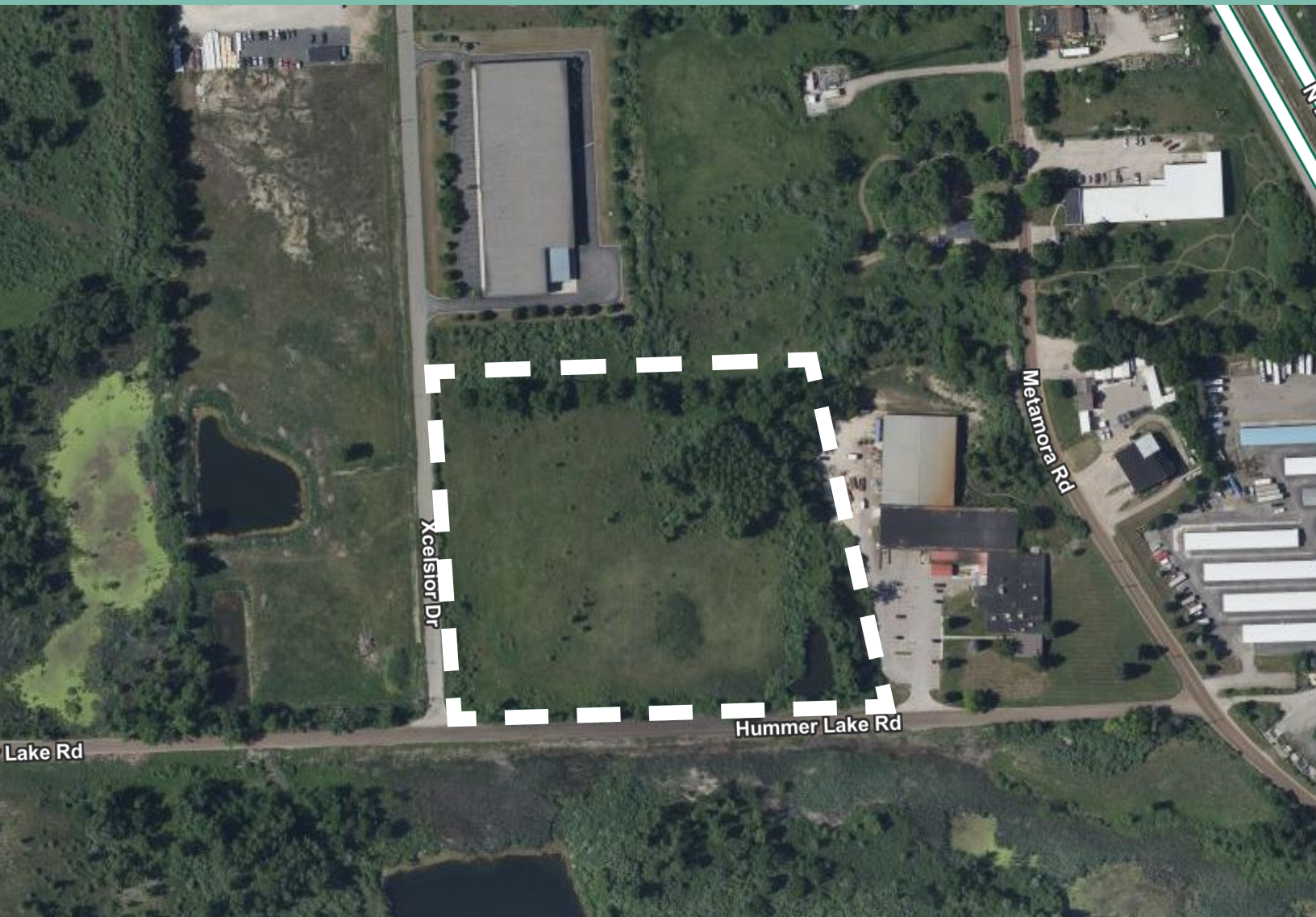


# XCELSIOR DRIVE

OXFORD TOWNSHIP, MI

11.53 ACRES AVAILABLE





11.53 ACRES AVAILABLE

Xcelsior Drive, Oxford Township, MI

For Sale

# Aerial



## Comments

- + Zoning: I-2 General Industrial, includes most outdoor storage and heavy industrial uses
- + NE Corner of Hummer Lake Rd & Xcelsior Dr
- + Just off of Lapeer Rd
- + Fast Growing Area
- + Taxes: \$10,079.90
- + Divisible (Min/Max): 11.53 AC

11.53 ACRES AVAILABLE

Xcelsior Drive, Oxford Township, MI

For Sale

# Property Features

# I-2

Zoning

# 11.53

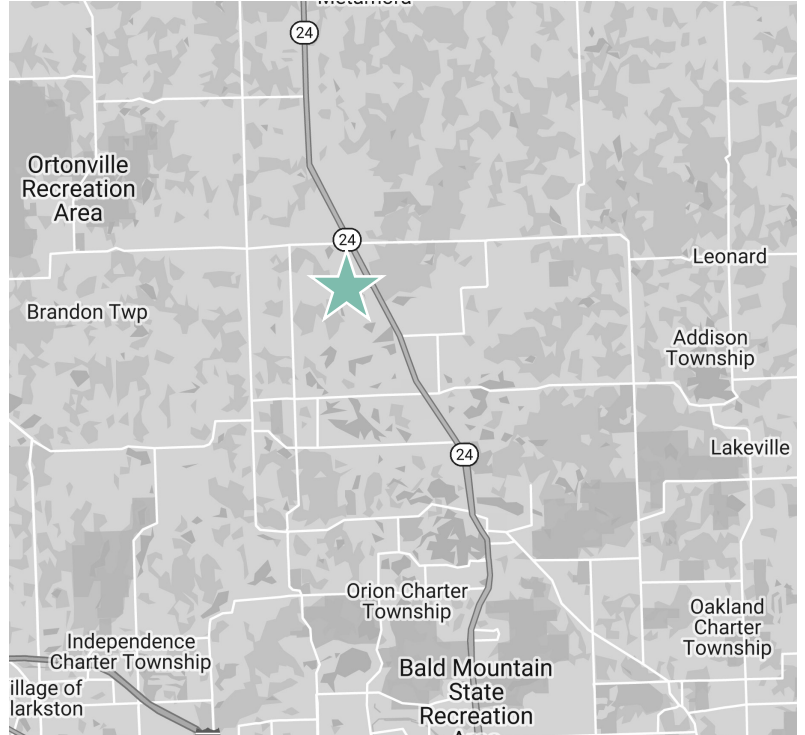
Acres

# Oakland

County

# \$1,490,000

Sale Price



## Contact Us

**Charles M. Ginster**

Senior Vice President

+1 248 351 2063

chuck.ginster@cbre.com

**Jacob Ginster**

Associate

+1 248 351 2082

jake.ginster@cbre.com

**Joe Kemp**

Associate

+1 248 936 6892

joe.kemp@cbre.com

© 2021 CBRE, Inc. All rights reserved. This information has been obtained from sources believed reliable, but has not been verified for accuracy or completeness. You should conduct a careful, independent investigation of the property and verify all information. Any reliance on this information is solely at your own risk. CBRE and the CBRE logo are service marks of CBRE, Inc. All other marks displayed on this document are the property of their respective owners, and the use of such logos does not imply any affiliation with or endorsement of CBRE. Photos herein are the property of their respective owners. Use of these images without the express written consent of the owner is prohibited.