

FOR LEASE



833 - 873 WILLAMETTE STREET - EUGENE, OREGON

PARK PLACE BUILDING DOWNTOWN RETAIL AND OFFICE SPACES

- MULTI-TENANT BUILDING WITH MODERN AND HISTORIC ARCHITECTURE
- EUGNET HIGH-SPEED INTERNET
- ELEVATOR SERVED
- WILLAMETTE STREET FRONTAGE
- EXCELLENT DOWNTOWN LOCATION

Please see the following pages for space information and lease rates



For more information contact:

BILLY POLLOCK
billyp@campbellre.com | (541) 285-8865

BEN WANICHEK
benw@campbellre.com | (541) 520-0067

BILL NEWLAND
bill@campbellre.com | (541) 484-2214

TIM CAMPBELL
timc@campbellre.com | (541) 484-2214

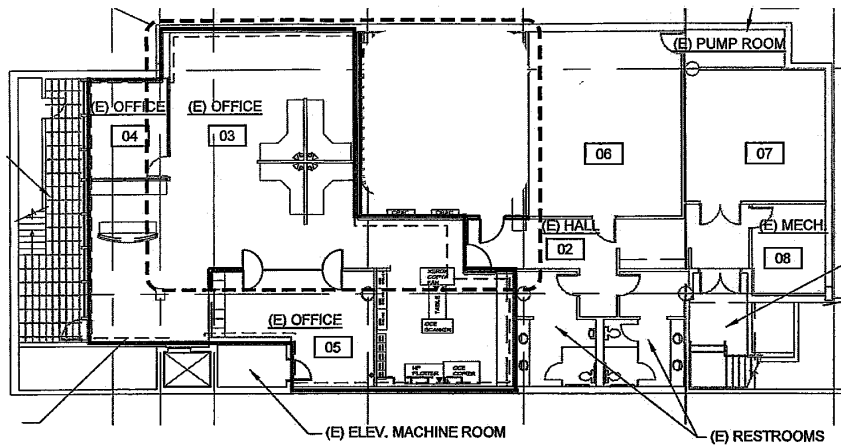
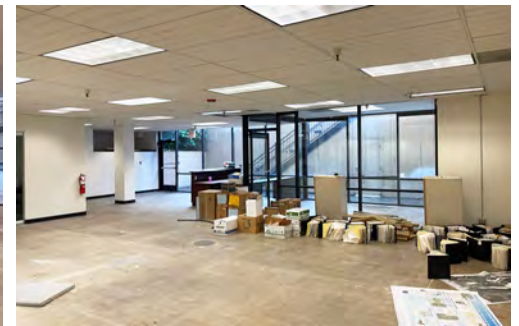
The information in this package was obtained from sources deemed reliable, and is not guaranteed by agent. Package is subject to change, error or omission, prior sale or lease, correction or withdrawal. Any party contemplating purchase is urged to conduct their own independent study and inspection.

OFFICE SPACE

845 WILLAMETTE STREET

- DAYLIGHT LOWER-LEVEL OFFICE SPACE
- 2,309 SQUARE FEET
- OPEN WORK AREAS
- PRIVATE OFFICES
- CONFERENCE ROOM
- RESTROOMS
- ELEVATOR SERVED

Lease Rate: \$1.08/SF, FULL SERVICE



*Office suite accessible
by outside stairwell or
lobby elevator*

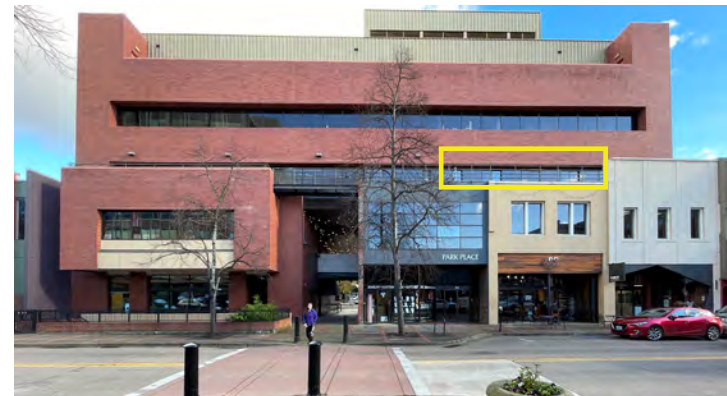
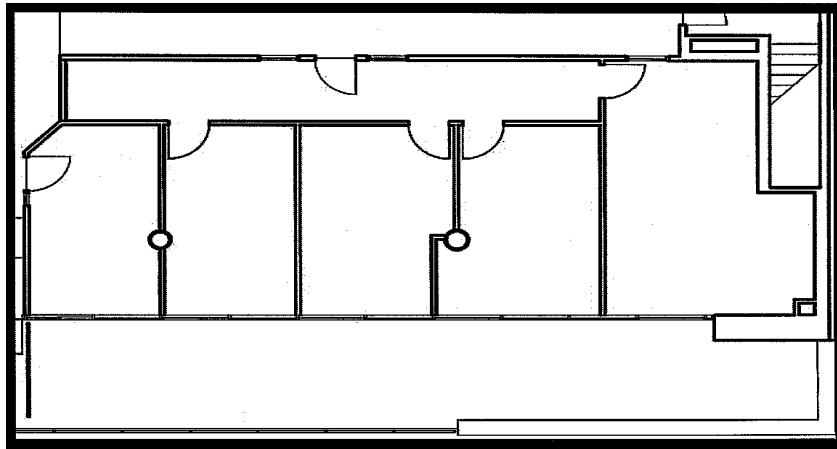


OFFICE SUITE

859 WILLAMETTE STREET

- THIRD FLOOR OFFICE SUITE
- 1,625 SQUARE FEET
- EXPANSIVE WINDOW LINE
- LARGE OUTDOOR BALCONY
- ELEVATOR SERVED

Lease Rate: \$1.75/SF, FULL SERVICE

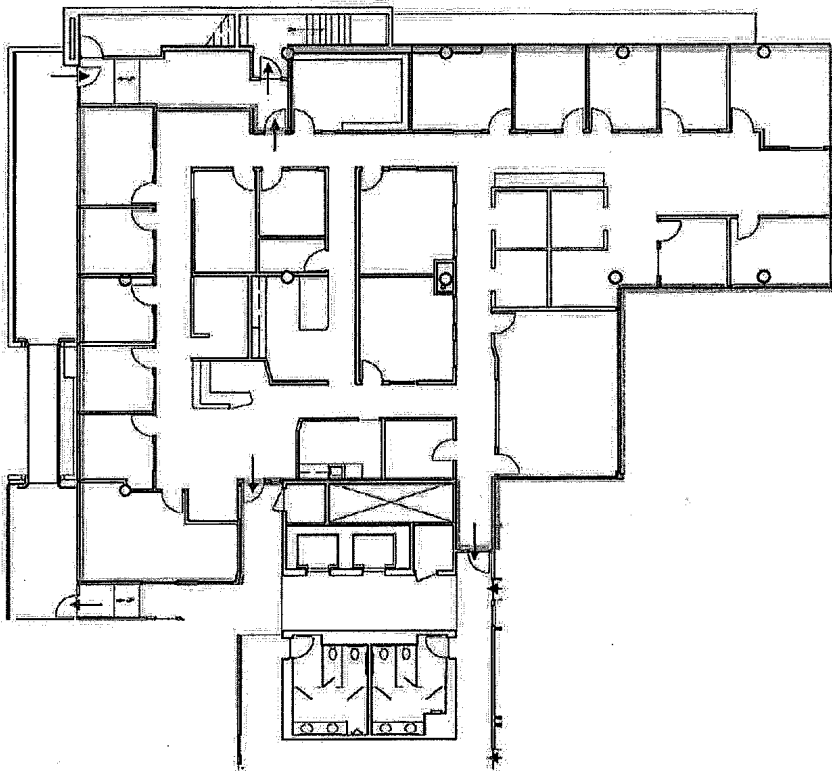
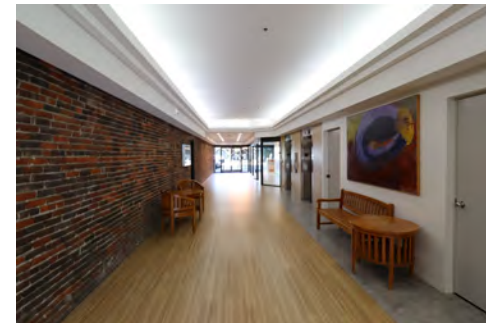
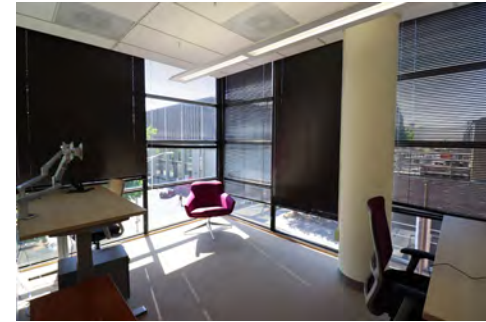


OFFICE SUITE

859 WILLAMETTE STREET

- SUITE 320 - 5,965 SQUARE FEET
- APPROXIMATELY 17 PRIVATE OFFICES
- SPACIOUS OPEN AREA FOR CUBICLE SET-UP
- LARGE, WELL-LIT CONFERENCE ROOM
- RECEPTION, LOBBY, BREAK ROOM, AND OUTDOOR SEATING AREA

Lease Rate: \$1.70/SF, MODIFIED GROSS



PARK PLACE LOCATION MAP



The information in this package was obtained from sources deemed reliable, and is not guaranteed by agent. Package is subject to change, error or omission, prior sale or lease, correction or withdrawal. Any party contemplating purchase is urged to conduct their own independent study and inspection.