

FOR SALE

106 Church Street | Reevesville, SC



**COLDWELL BANKER
COMMERCIAL**
ATLANTIC



OFFERING SUMMARY

Price:	\$470,000
Total Available:	2,007 SF
Acres:	3.92 Acres
Zoning:	Dorchester - SFR - Single Family Residential
Parcel Number:	043-03-00-012

PROPERTY OVERVIEW

Reevesville is one of those delightful Old South Railroad stops. Although the passengers and famous Pullman Cars are long gone, some of the original 19th century architecture still exists. The majority of Pullman Porters came from St. George, SC. It was a father and son enterprise. Travel back in time and create a wonderful Bed and Breakfast, or just create your own private getaway. Reevesville is a friendly town. If you want to live life a little bit slower, safer, and only 5 minutes to I-95. If the term "Be Back" suits you, Welcome Home! The primary home is an awesome one-story structure, built in 1890. A few finishing touches and you are there. New swimming pool recently installed. The remnants of a 19th century 1880 boarding house still exist. The entire property is 3.92 Acres. Plenty of room to stretch out and plan your next project. You could rebuild the home or have an endless supply of clear heart pine and long floor and ceiling timbers. Either way you win.



**COLDWELL BANKER
COMMERCIAL**
ATLANTIC

106 Church Street | Reevesville, Sc 29471

Neal Walsh • nwalsh@cbsatlantic.com

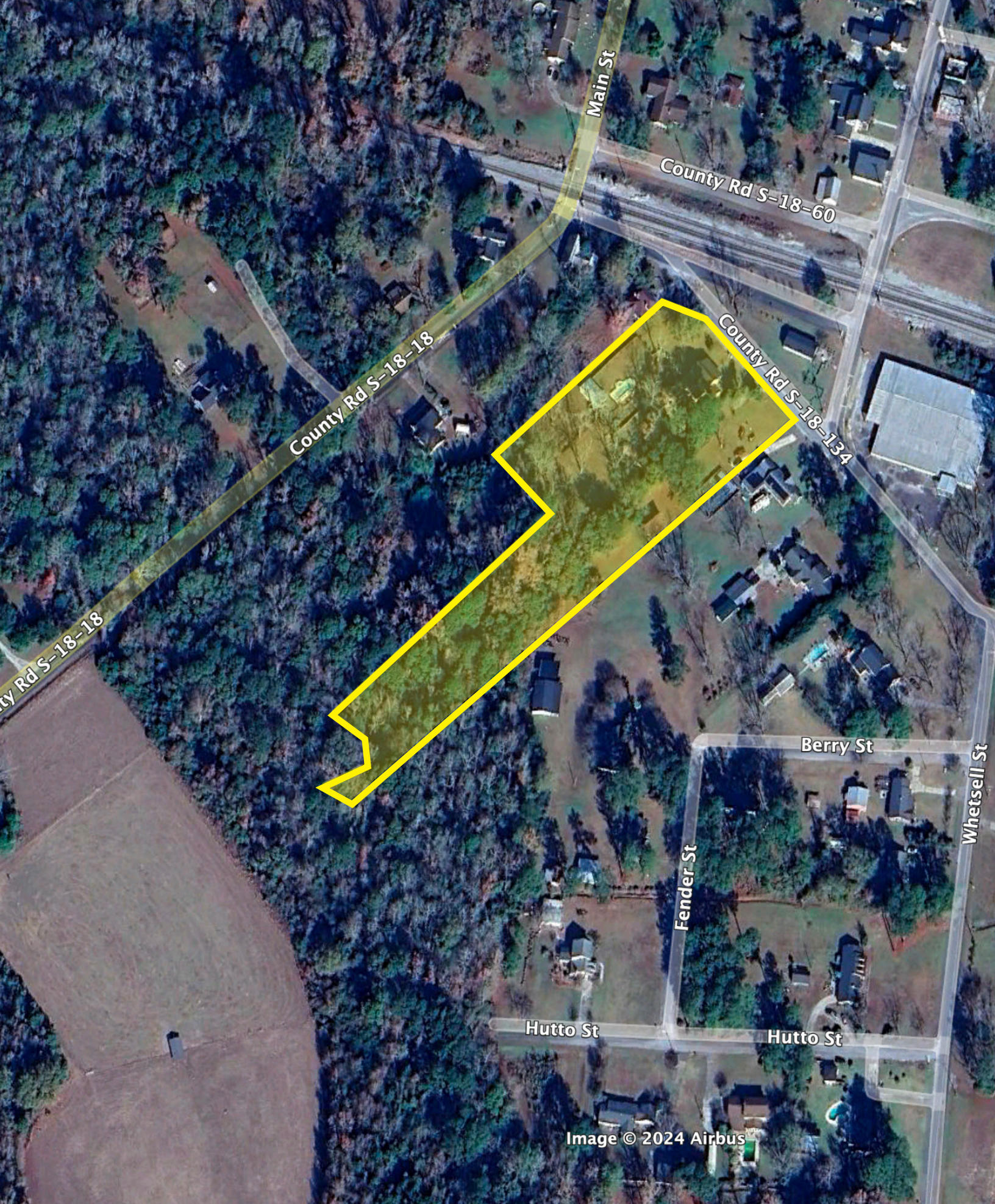


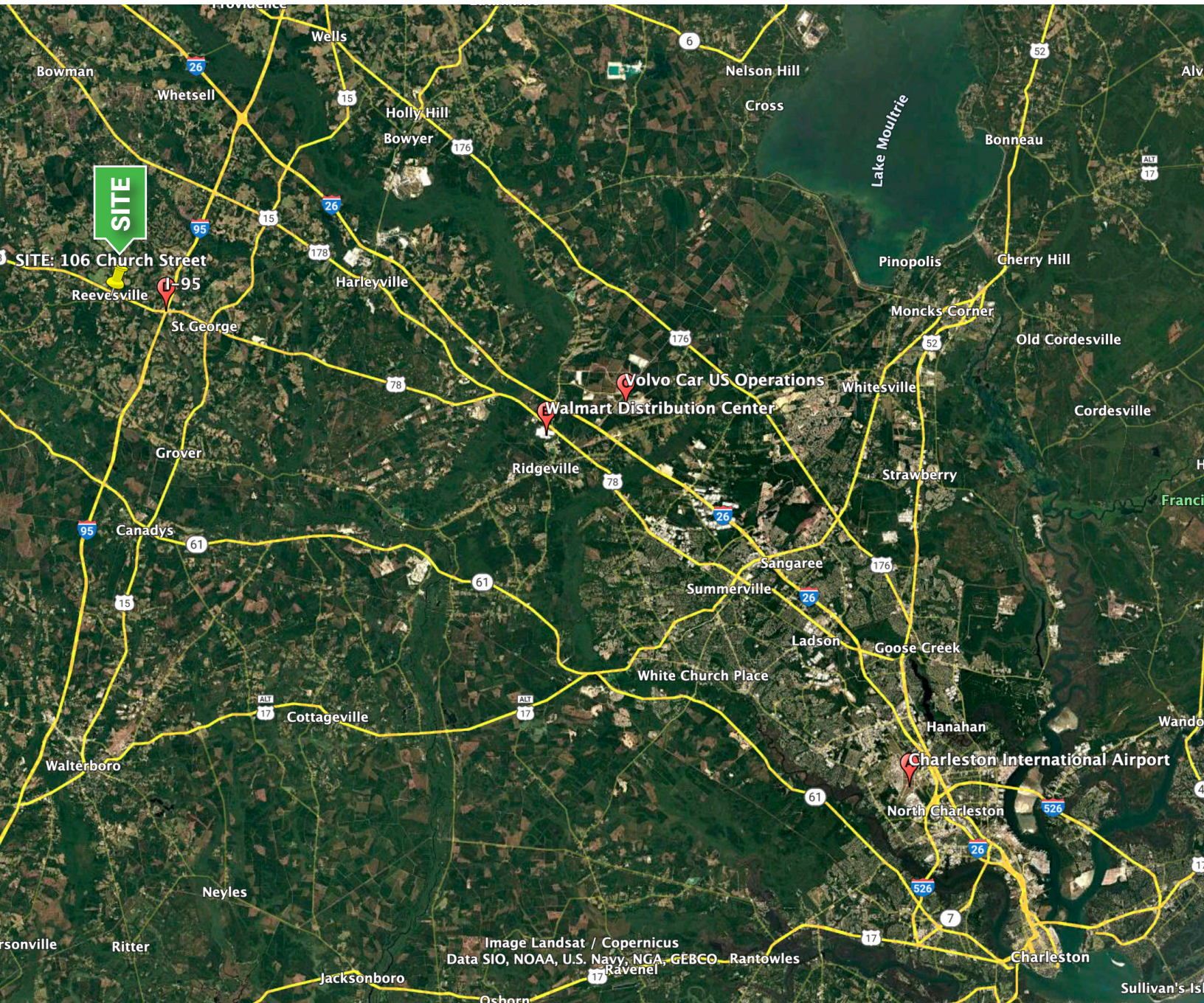
Image © 2024 Airbus



COLDWELL BANKER
COMMERCIAL
ATLANTIC

106 Church Street | Reevesville, Sc 29471

Neal Walsh • nwalsh@cbatlantic.com

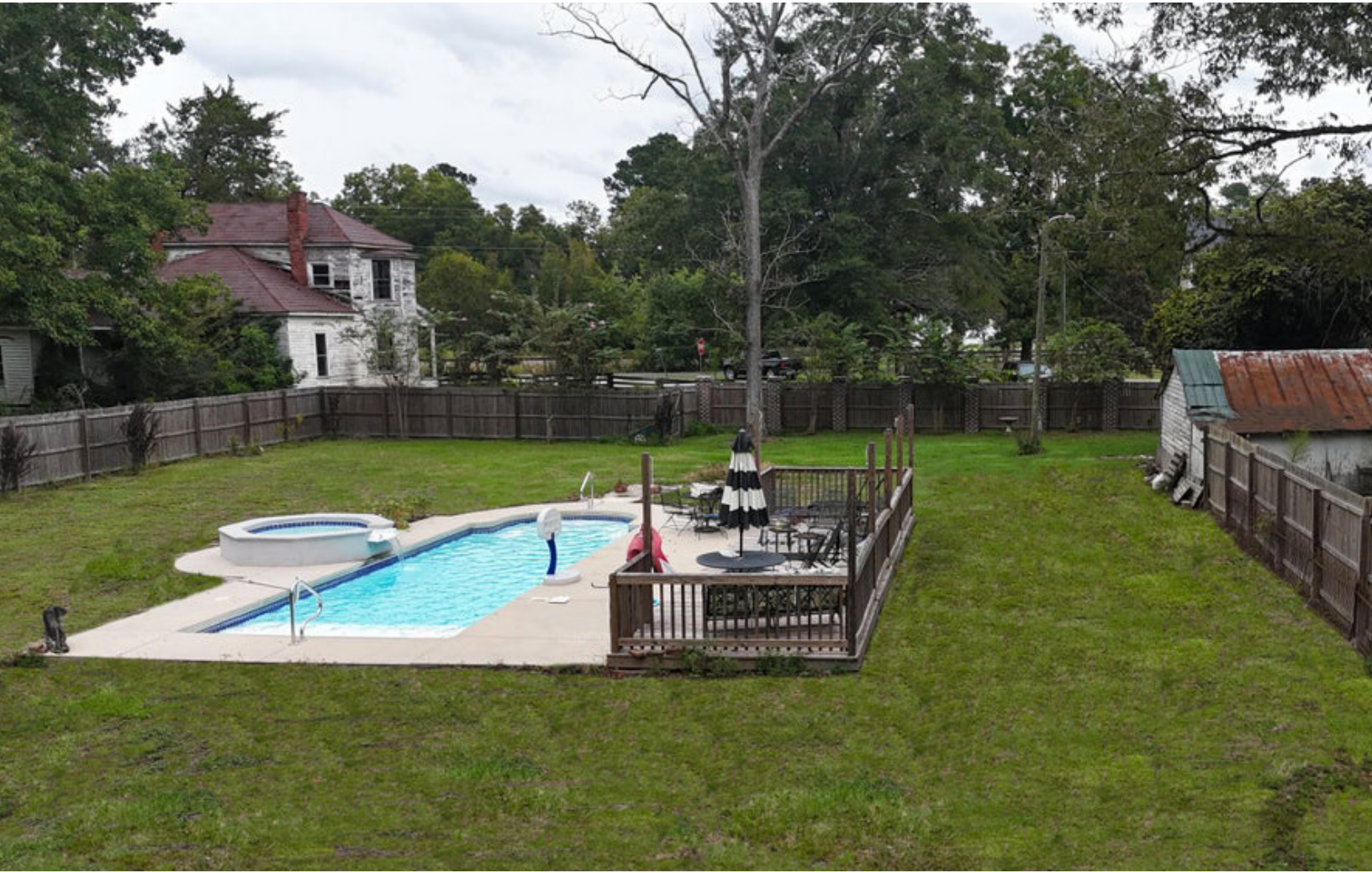




COLDWELL BANKER
COMMERCIAL
ATLANTIC

106 Church Street | Reevesville, Sc 29471

Neal Walsh • nwalsh@cbatlantic.com



COLDWELL BANKER
COMMERCIAL
ATLANTIC

106 Church Street | Reevesville, Sc 29471

Neal Walsh • nwalsh@cbatlantic.com

Neal Walsh
Senior Broker
(C) 843.330.3787
nwalsh@cbsatlantic.com

3506 W Montague Ave Suite 200
North Charleston, SC 29418
843.744.9877
cbsatlantic.com | cbcretailatlantic.com



**COLDWELL BANKER
COMMERCIAL**
ATLANTIC

This information has been obtained from sources believed reliable but has not been verified for accuracy or completeness. Coldwell Banker Commercial Atlantic makes no guarantee, representation or warranty and accepts no responsibility or liability as to the accuracy, completeness, or reliability of the information contained herein. You should conduct a careful, independent investigation of the property and verify all information. Any reliance on this information is solely at your own risk.

The information contained herein should be considered confidential and remains the sole property of Coldwell Banker Commercial Atlantic at all times. Although every effort has been made to ensure accuracy, no liability will be accepted for any errors or omissions. Disclosure of any information contained herein is prohibited except with the express written permission of Coldwell Banker Commercial Atlantic.