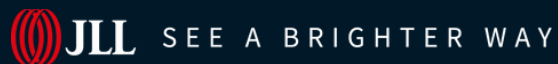




# For lease

10001 Patterson Avenue, Richmond, VA 23238





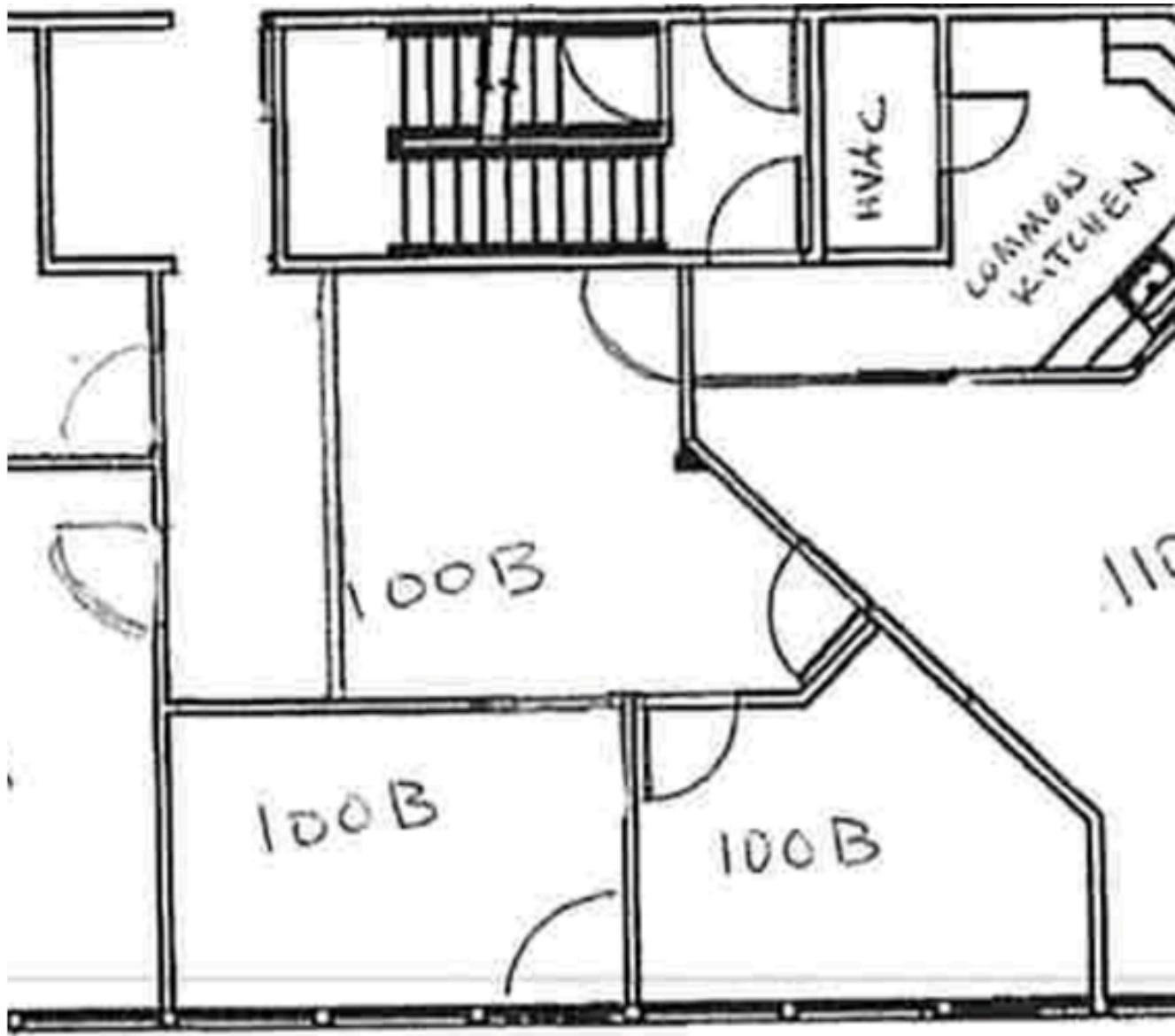
2029-2031  
Westwood Avenue

**Property Features**

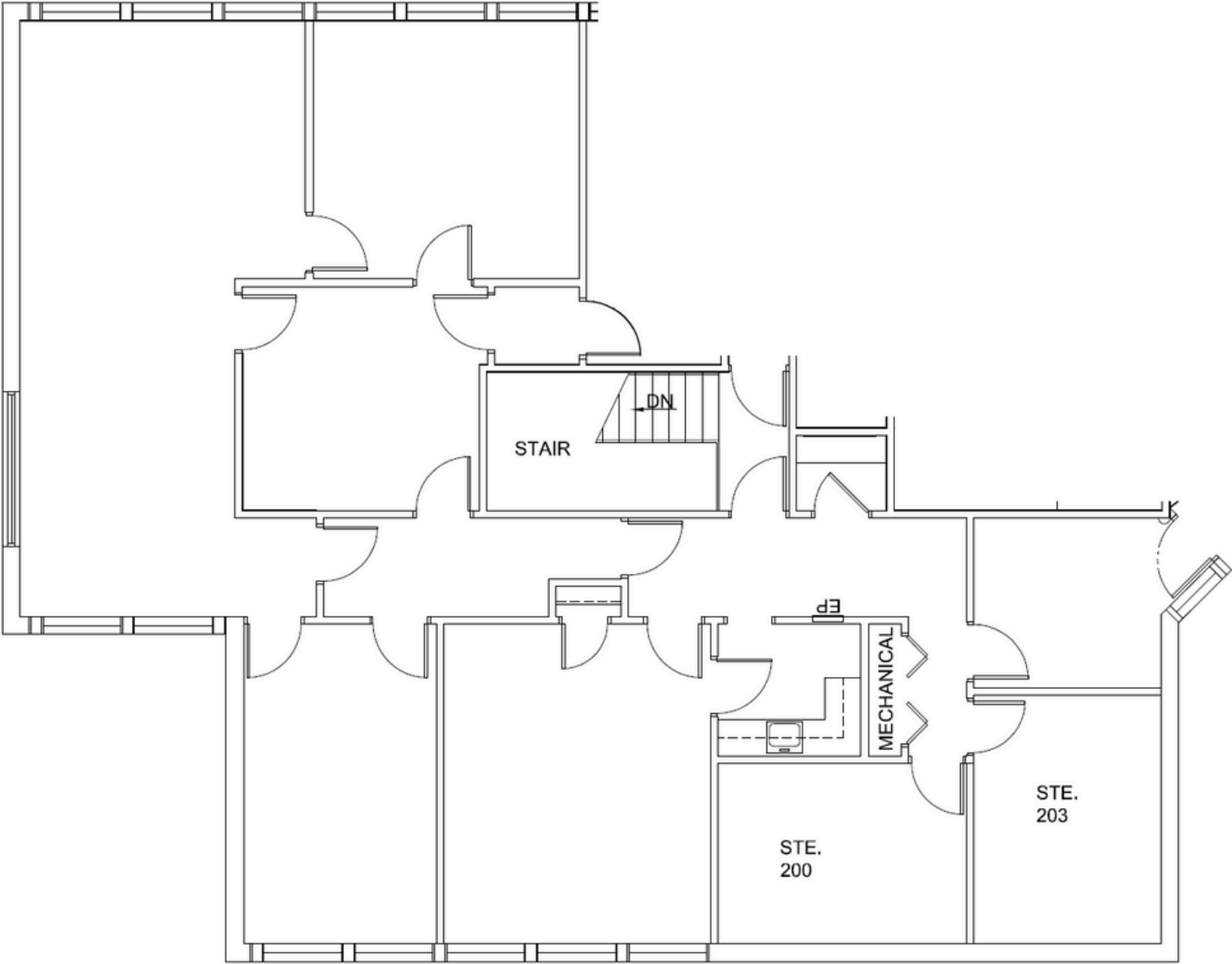
- 1st floor suite available
  - Suite 100B: 559 SF
- 2nd floor suite available
  - Suite 202: 2,159 SF
- Located at the corner of  
Gaskins and Patterson
- Gaskins Road traffic count:  
9,500 vehicles per day
- Term length flexibility
- Close proximity to Route 288  
and I-64



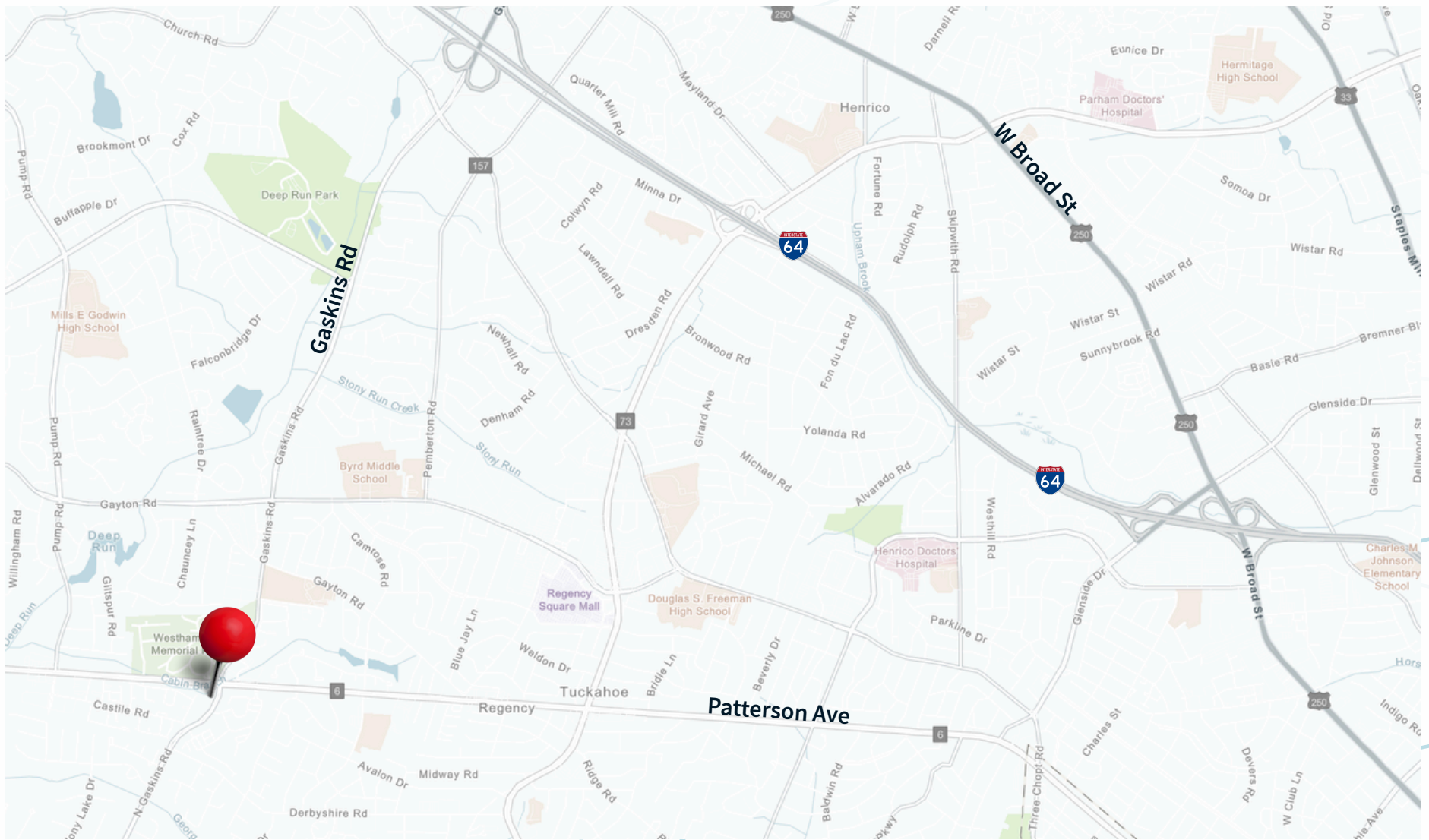
Floor Plan | Suite 100B



Floor Plan | Suite 202







**Muscoe Garnett**  
Managing Director  
[muscoe.garnett@jll.com](mailto:muscoe.garnett@jll.com)  
+1 (804) 200 6340