



Colliers

73,732 VPD

St. Louis Premium Outlets

INTERSTATE 64

Chesterfield Airport Rd

23,204 VPD

TownPlace Suites by Marriott

18626 Olive Street Rd

Spirit of St. Louis Airport

For Sale

Sale Price:

\$936,000

Contact us:

**Joseph S. Hill, CCIM, SIOR**

Executive Vice President  
+1 314 584 6213  
joseph.hill@colliers.com

**Andrew H. Port, SIOR**

Senior Vice President  
+1 314 584 6254  
andy.port@colliers.com

# 18626 Olive Street Road Chesterfield, MO 63005

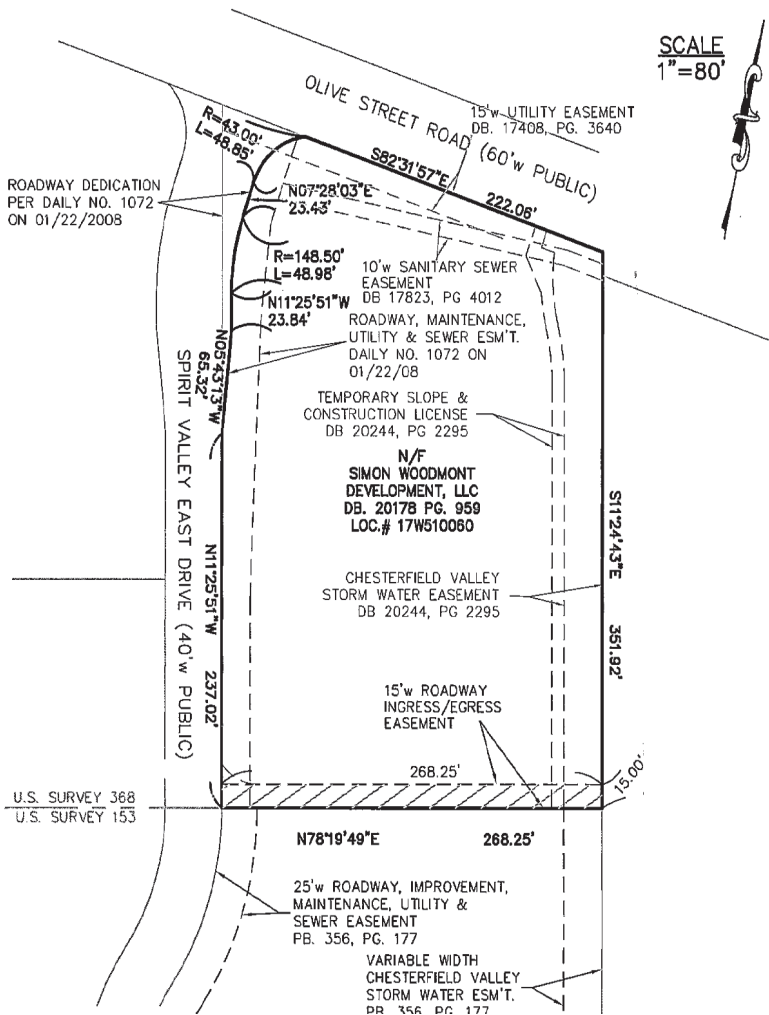
## Prime Land For Sale in Chesterfield Valley

- 2.391 acres of land for development
- Two access points are available
- Convenient highway access to I-64
- Located in desirable Chesterfield Valley in close proximity to St. Louis Premium Outlets, Spirit of St. Louis Airport & Spirit Valley Business Park
- Zoned "PID" - Planned Industrial
- 2022 Real Estate Taxes: \$22.00
- Sale Price: \$936,000

**Colliers**

101 South Hanley Road  
Suite 1400  
St. Louis, MO 63105  
colliers.com/stlouis

# Site Information



## Property Details

**Address** 18626 Olive Street Road  
Chesterfield, MO 63005

**Acres** 2.391 AC

**Frontage** ±283' on Olive Street Rd  
±444' on Spirit Valley East Drive

**Access** Two access points available

**Utilities** Brought to site  
Storm-water channel on site

**Zoning** PID - Planned Industrial

**Price** \$936,000

# Demographics



Population

1 Mile	3 Miles	5 Miles
27	6,650	46,975



Average HH Income

1 Mile	3 Miles	5 Miles
\$209,538	\$281,846	\$194,008



Businesses

1 Mile	3 Miles	5 Miles
235	1,084	2,275

# Location



## Contact us:

**Joseph S. Hill, CCIM, SIOR**

Executive Vice President  
+1 314 584 6213  
joseph.hill@colliers.com

**Andrew H. Port, SIOR**

Senior Vice President  
+1 314 584 6254  
andy.port@colliers.com

**Colliers**  
101 South Hanley Road  
Suite 1400  
St. Louis, MO 63105  
colliers.com/stlouis

