



# NoHo Flats Phase 2 Street Retail Available

505 N. Rome Avenue  
Tampa, FL 33606

**Jaclyn Langholz**

Executive Vice President

Retail Services

+1 813 228 9834

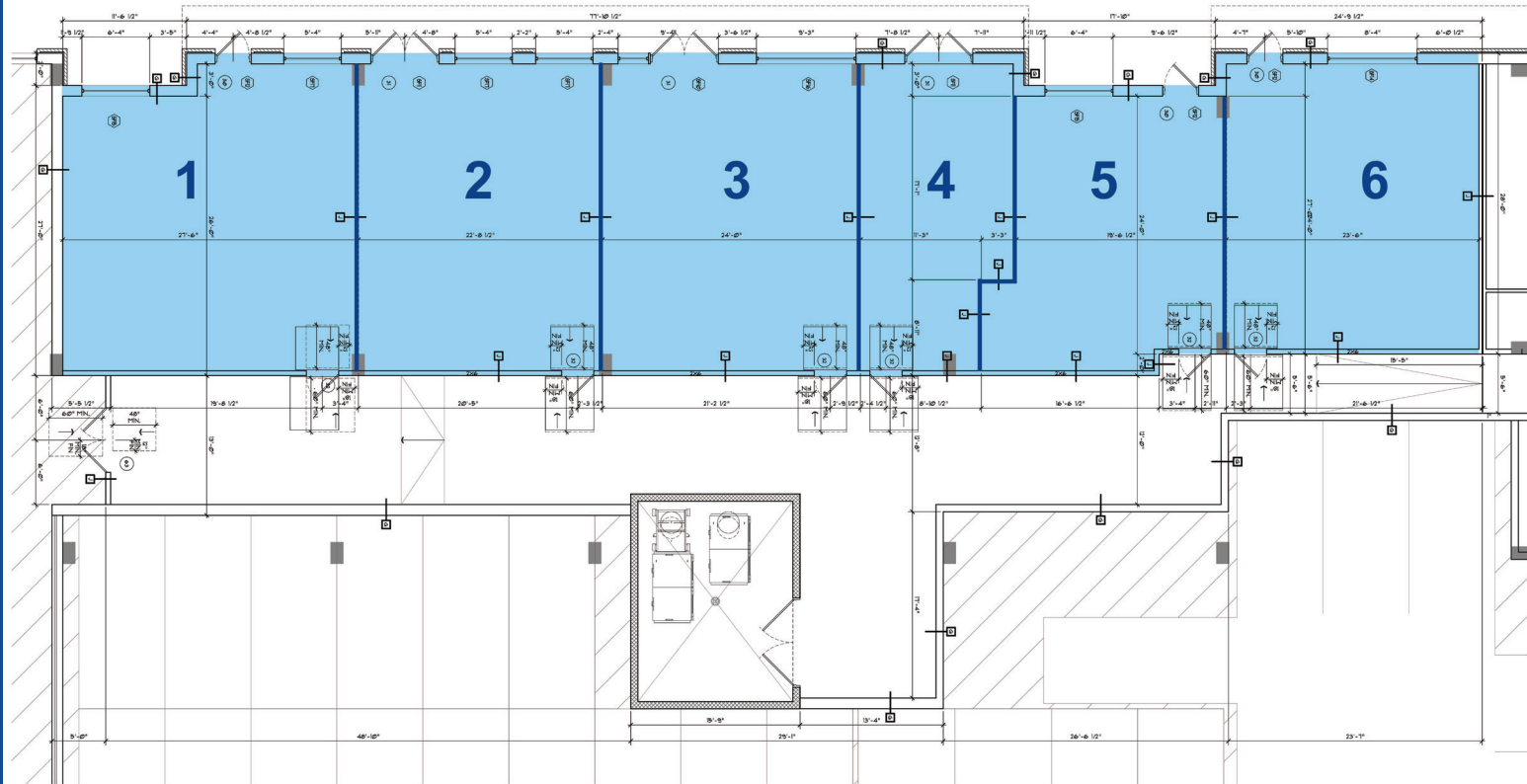
[jaclyn.langholz@colliers.com](mailto:jaclyn.langholz@colliers.com)

**Colliers**

# NoHo Flats Phase 2

- Total of 3,562 SF of new construction, retail space in the highly desirable North Hyde Park area
- Can be subdivided into spaces as small as 378 SF
- Attached to a 387 unit residential development
- High daytime population over 242,000
- Available approximately 2nd Quarter 2025
- Total population of 127,929 within 3 miles with an average household income of \$120,896

## Retail Site Plan

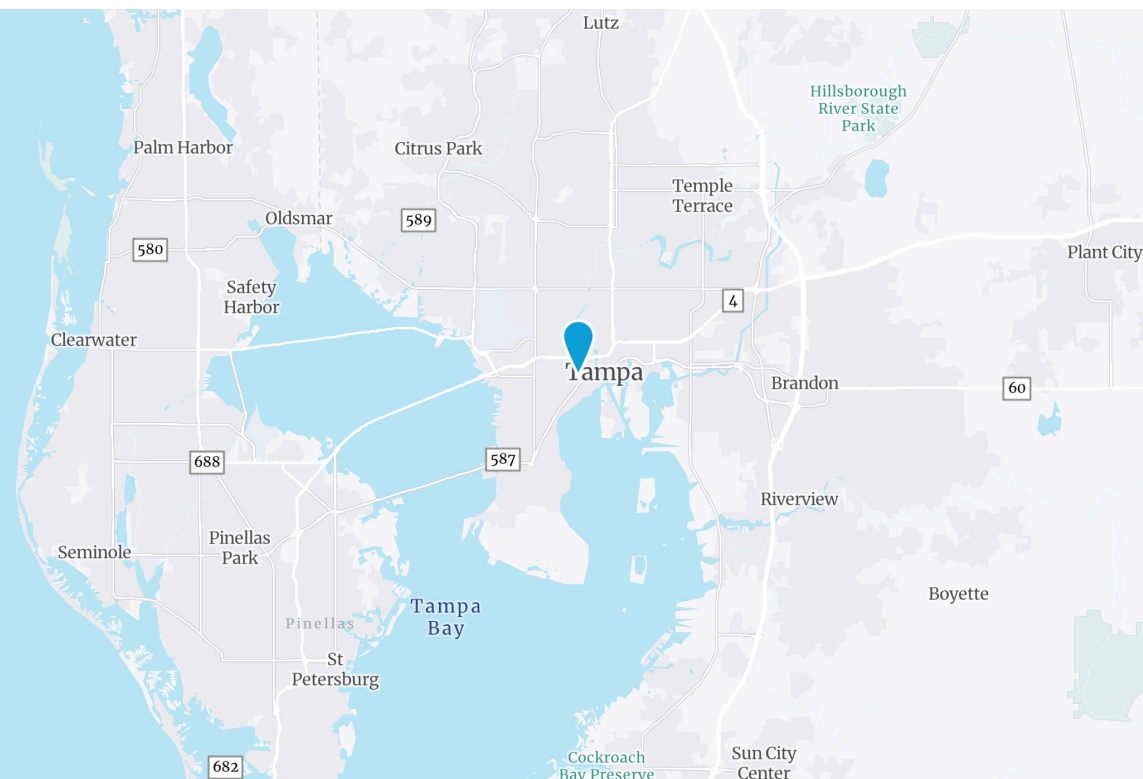


Suite	Tenant	SF
1	Available	739 SF
2	Available	640 SF
3	Available	676 SF
4	Available	378 SF
5	Available	505 SF
6	Available	624 SF

View Online  
colliers.com



# NoHo Flats

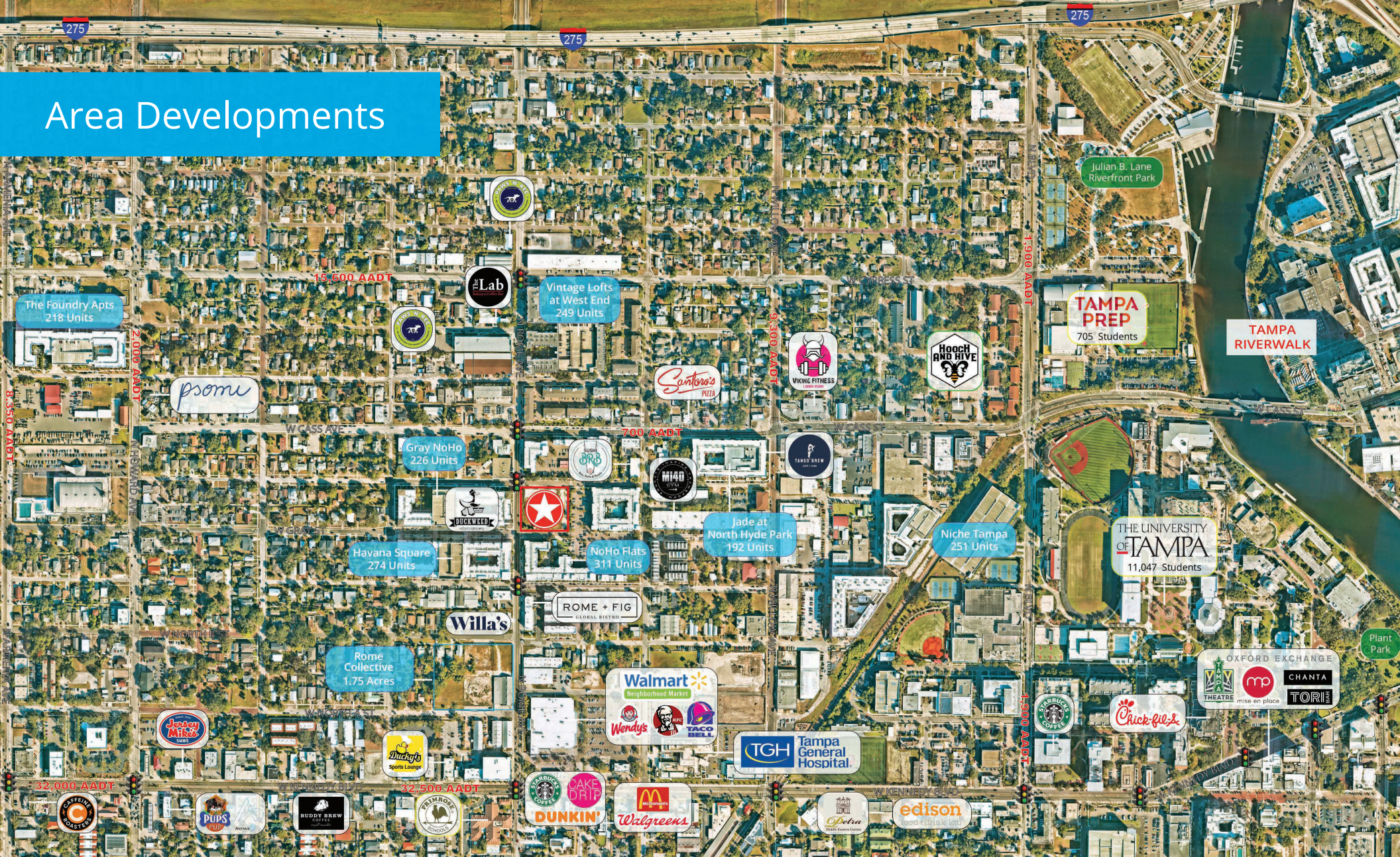


## Area Demographics

	1-Mile	3-Mile	5-Mile
Total Population	23,123	127,929	248,430
Daytime Population	35,191	242,861	399,531
Average Household Income	\$112,738	\$120,896	\$111,114
Median Age	30.0	38.2	39.0



# Area Developments



4830 W. Kennedy Blvd.  
 Suite 300  
 Tampa, FL 33609  
 P: +1 813 221 2290

This document has been prepared by Colliers International for advertising and general information only. Colliers International makes no guarantees, representations or warranties of any kind, expressed or implied, regarding the information including, but not limited to, warranties of content, accuracy and reliability. Any interested party should undertake their own inquiries as to the accuracy of the information. Colliers International excludes unequivocally all inferred or implied terms, conditions and warranties arising out of this document and excludes all liability for loss and damages arising there from. This publication is the copyrighted property of Colliers International and/or its licensor(s). ©2024. All rights reserved.