

**2,430 SF FREESTANDING RETAIL SPACE ON 0.43 AC  
14930 PURITAS AVENUE, CLEVELAND, OHIO 44135**

**FOR LEASE**



**REDEVELOPMENT  
OPPORTUNITY**

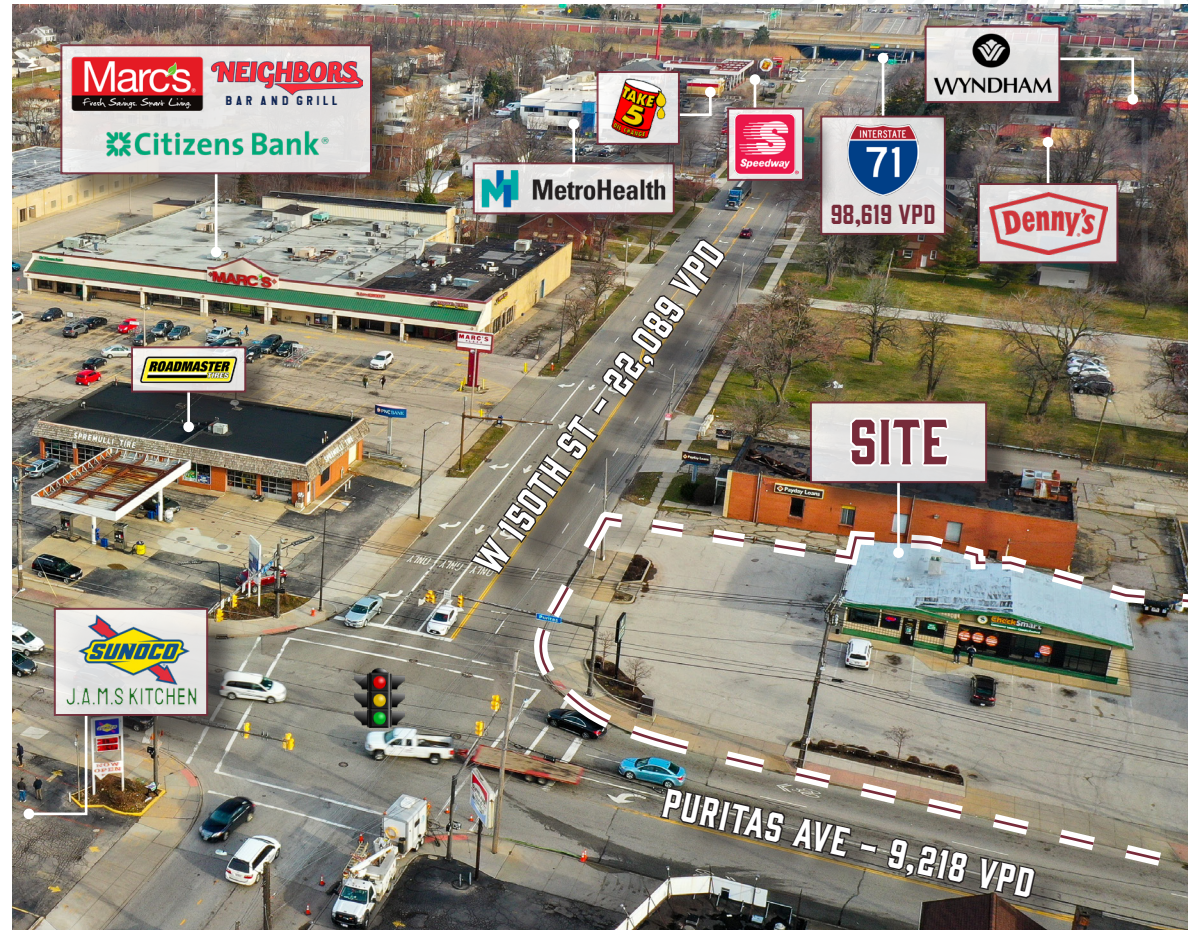
**Kevin Moss**  
First Vice President  
216 363 6453  
kevin.moss@cbre.com

**Vince Mingo**  
Senior Associate  
216 535 0188  
vince.mingo@cbre.com

**CBRE**

# THE OPPORTUNITY

- 2,430 SF Freestanding Retail Space on 0.43 AC available For Lease!
- Monument Signage Available at Intersection
- Highly-trafficked intersection with 31,307 VPD (Source: ODOT TIMS)
- Join nearby retailers Marc's, PNC Bank, Burger King, Happy's Pizza, Sunoco Gas Station and many more!
- Dense population with 324,731 people within a 5-mile radius and average household income of \$78,597



## QUICK STATS - 5 MILE RADIUS



DAYTIME  
POPULATION  
**289,922**



POPULATION  
**324,731**



HOUSEHOLDS  
**147,652**



POPULATION  
25 & OVER  
**234,047**



AVG. HOUSEHOLD  
INCOME  
**\$78,597**

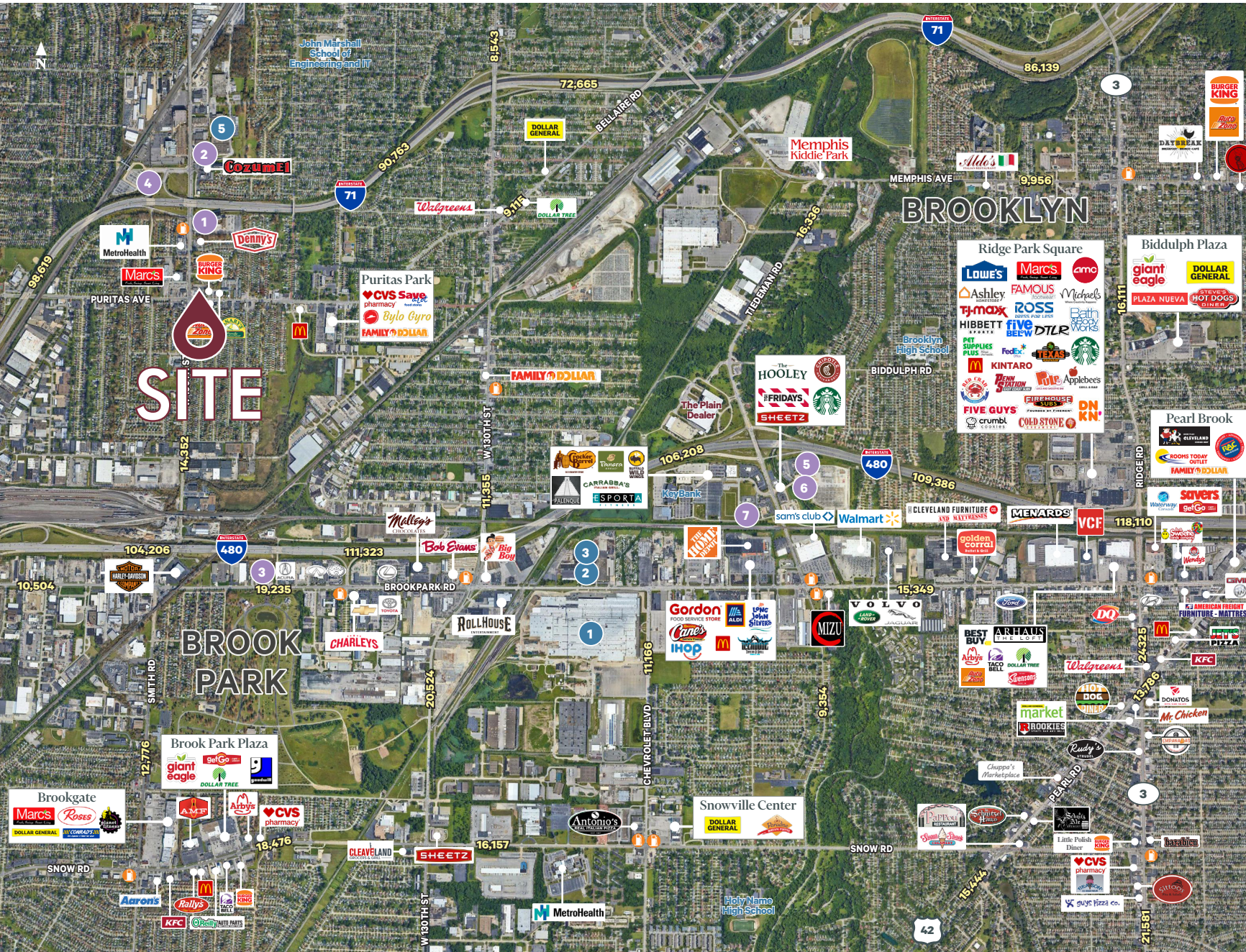
# INTERIOR PHOTOS



# AERIAL VIEW



# RETAIL TRADE AREA



## BROOKLYN- BROOK PARK RETAIL TRADE AREA

### TRADE AREA INFO

Brookpark Rd & Tiedeman Rd  
(3 Miles)

- Population: 135,351
- Daytime Population: 118,306
- Total Households: 59,209
- Median HH Income: \$52,821
- Total Businesses: 3,593
- Total Employees: 58,306

### MAJOR OFFICE BUILDINGS

- 1,159,644 Total SF  
(Source, CoStar)
1. KeyBank - 575,644 SF
  2. PNC Bank - 439,000 SF
  3. 8787 Brookpark Rd - 75,000 SF

### HOTELS

- 7 Hotels/915 Rooms  
(Source, CoStar)
1. Wyndham - 372
  2. Four Points by Sheraton - 147
  3. Travelodge - 120
  4. La Quinta Inn - 115
  5. Extended Stay - 104
  6. Hampton - 81
  7. Fairfield Inn - 81

Off Map:  
Oakpark Motel - 42

### MAJOR EMPLOYERS

1. General Motors - 4,000
2. Anchor Metal Processing - 325
3. Select Security - 300
4. Alpha Packaging - 300

Off Map:

© 2024 CBRE, Inc. All rights reserved. This information has been obtained from sources believed reliable, but has not been verified for accuracy or completeness. You should conduct a careful, independent investigation of the property and verify all information. Any reliance on this information is solely at your own risk. CBRE and the CBRE logo are service marks of CBRE, Inc. All other marks displayed on this document are the property of their respective owners, and the use of such logos does not imply any affiliation with or endorsement of CBRE. Licensed Real Estate Broker.  
Updated: February 22, 2024

# DEMOGRAPHICS

	1 MILE	3 MILES	5 MILES
2023 Population - Current Year Estimate	13,315	111,627	324,731
2028 Population - Five Year Projection	12,968	108,861	317,244
2023 Daytime Population	13,869	110,771	289,922
2023 Households - Current Year Estimate	5,693	50,043	147,652
2023 Average Household Income	\$67,351	\$73,882	\$78,597
2028 Average Household Income Projection	\$79,851	\$86,619	\$91,631
2023 Median Household Income	\$50,346	\$53,924	\$55,184
2023 Population Over 25	9,493	80,707	234,047

## CONTACT US

### Kevin Moss

First Vice President

216 363 6453

kevin.moss@cbre.com

### Vince Mingo

Senior Associate

216 535 0188

vince.mingo@cbre.com

© 2024 CBRE, Inc. All rights reserved. This information has been obtained from sources believed reliable, but has not been verified for accuracy or completeness. You should conduct a careful, independent investigation of the property and verify all information. Any reliance on this information is solely at your own risk. CBRE and the CBRE logo are service marks of CBRE, Inc. All other marks displayed on this document are the property of their respective owners, and the use of such logos does not imply any affiliation with or endorsement of CBRE. Photos herein are the property of their respective owners. Use of these images without the express written consent of the owner is prohibited. Licensed Real Estate Broker.

**CBRE**