

OFFICE PROPERTY // FOR LEASE

PROFESSIONAL OFFICE SUITE IN DOWNTOWN NORTHVILLE

115 NORTH CENTER STREET
NORTHVILLE, MI 48167



- Suite has 4 private offices, 1 conference room, small kitchenette and a lobby
- Charming historic architecture with exposed brick accents
- Easy and accessible building entrances
- Abundance of natural light for a welcoming and bright ambiance
- Cooperative marketing effort via the Downtown Development Authority
- Rear public parking lot
- Exterior signage available



P.A. COMMERCIAL
Corporate & Investment Real Estate

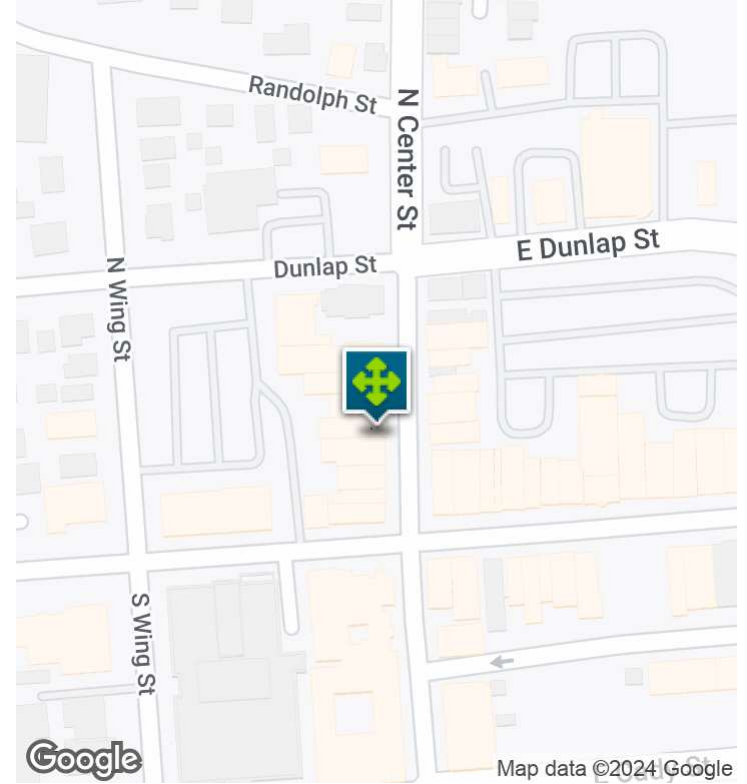
26555 Evergreen Road, Suite 1500
Southfield, MI 48076

248.358.0100

pacommercial.com

We obtained the information above from sources we believe to be reliable. However, we have not verified its accuracy and make no guarantee, warranty or representation about it. It is submitted subject to the possibility of errors, omissions, change of price, rental or other conditions, prior sale, lease or financing, or withdrawal without notice. We include projections, opinions, assumptions or estimates for example only, and they may not represent current, past or future performance of the property. You and your tax and legal advisors should conduct your own investigation of the property and transaction.

EXECUTIVE SUMMARY



OFFERING SUMMARY

Lease Rate:	\$20.00 SF/yr (NNN)
Building Size:	13,600 SF
Available SF:	1,771 SF
Lot Size:	0.2 Acres
Year Built:	1940
Zoning:	CBD
Market:	Detroit
Submarket:	Southern I-275 Corridor
Traffic Count:	8,093

PROPERTY OVERVIEW

A charming historic building with exposed brick in Downtown Northville currently has 1,771 SF available. The suite consists of 4 private offices, 1 conference room, small kitchenette and a reception/lobby area. The building can be accessed from either N Center St. or the rear public parking lot with exterior signage available.

LOCATION OVERVIEW

Ideally situated in the bustling heart of Northville, MI, The Veranda Center offers a prime location for businesses seeking a vibrant and dynamic environment. Surrounded by a mix of trendy boutiques, cafes, and restaurants, tenants will find an array of options for dining and entertainment just steps away.

PROPERTY HIGHLIGHTS

- Charming historic architecture with exposed brick accents
- Abundance of natural light for a welcoming and bright ambiance
- Cooperative marketing effort via the Downtown Development Authority
- Rear public parking lot
- Exterior signage available



P.A. COMMERCIAL
Corporate & Investment Real Estate

Matthew Schiffman CEO/MANAGING MEMBER
D: 248.281.9907 | C: 248.943.6449
matt@pacommercial.com

Mike Gunn SENIOR ASSOCIATE
D: 248.331.0202 | C: 248.924.7499
mike@pacommercial.com

115 NORTH CENTER STREET, NORTHVILLE, MI 48167 // FOR LEASE

LEASE SPACES



LEASE INFORMATION

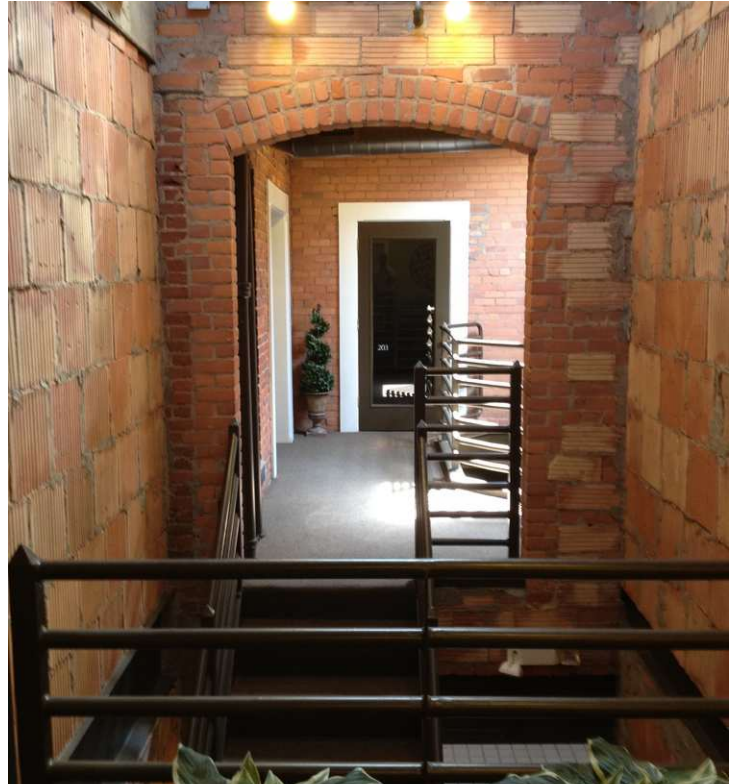
Lease Type:	NNN	Lease Term:	Negotiable
Total Space:	1,771 SF	Lease Rate:	\$20.00 SF/yr

AVAILABLE SPACES

SUITE	TENANT	SIZE (SF)	LEASE TYPE	LEASE RATE	DESCRIPTION
115 N Center St, Suite 200	Available	1,771 SF	NNN	\$20.00 SF/yr	-

115 NORTH CENTER STREET, NORTHVILLE, MI 48167 // FOR LEASE

ADDITIONAL PHOTOS



Matthew Schiffman CEO/MANAGING MEMBER
D: 248.281.9907 | C: 248.943.6449
matt@pacommercial.com

Mike Gunn SENIOR ASSOCIATE
D: 248.331.0202 | C: 248.924.7499
mike@pacommercial.com

We obtained the information above from sources we believe to be reliable. However, we have not verified its accuracy and make no guarantee, warranty or representation about it. It is submitted subject to the possibility of errors, omissions, change of price, rental or other conditions, prior sale, lease or financing, or withdrawal without notice. We include projections, opinions, assumptions or estimates for example only, and they may not represent current, past or future performance of the property. You and your tax and legal advisors should conduct your own investigation of the property and transaction.

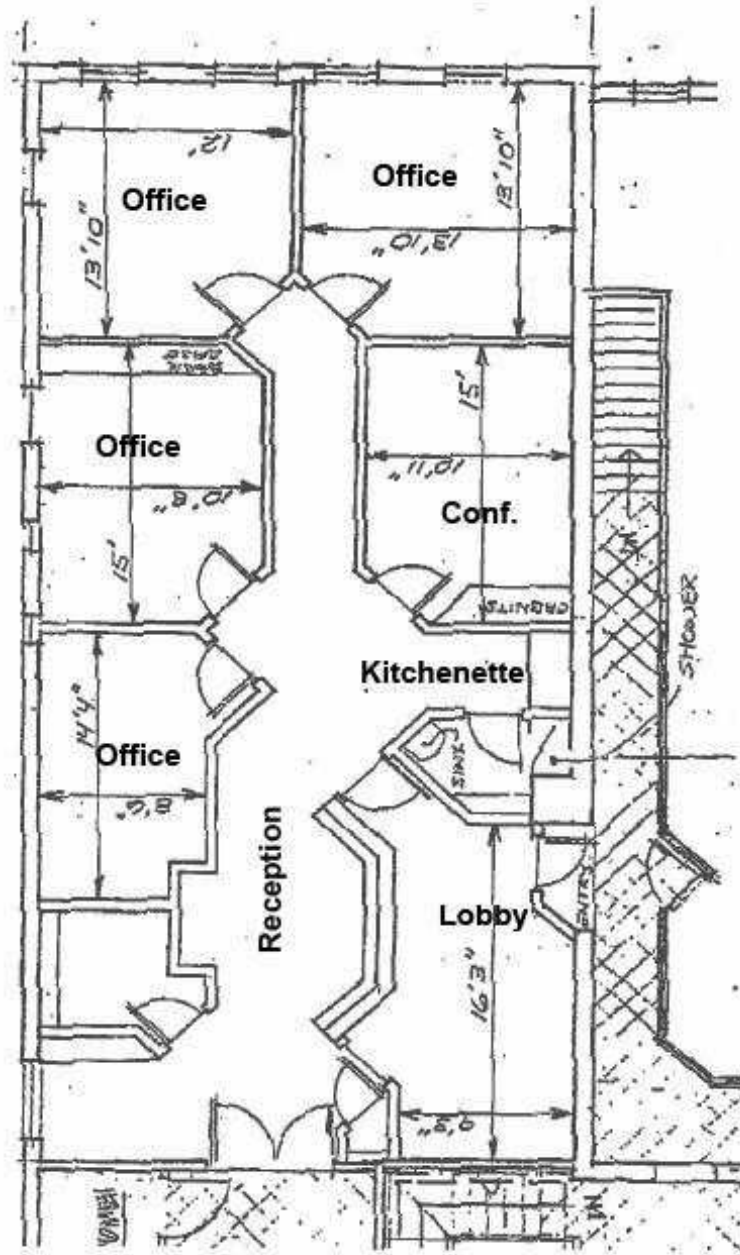
115 NORTH CENTER STREET, NORTHVILLE, MI 48167 // FOR LEASE

RETAILER MAP

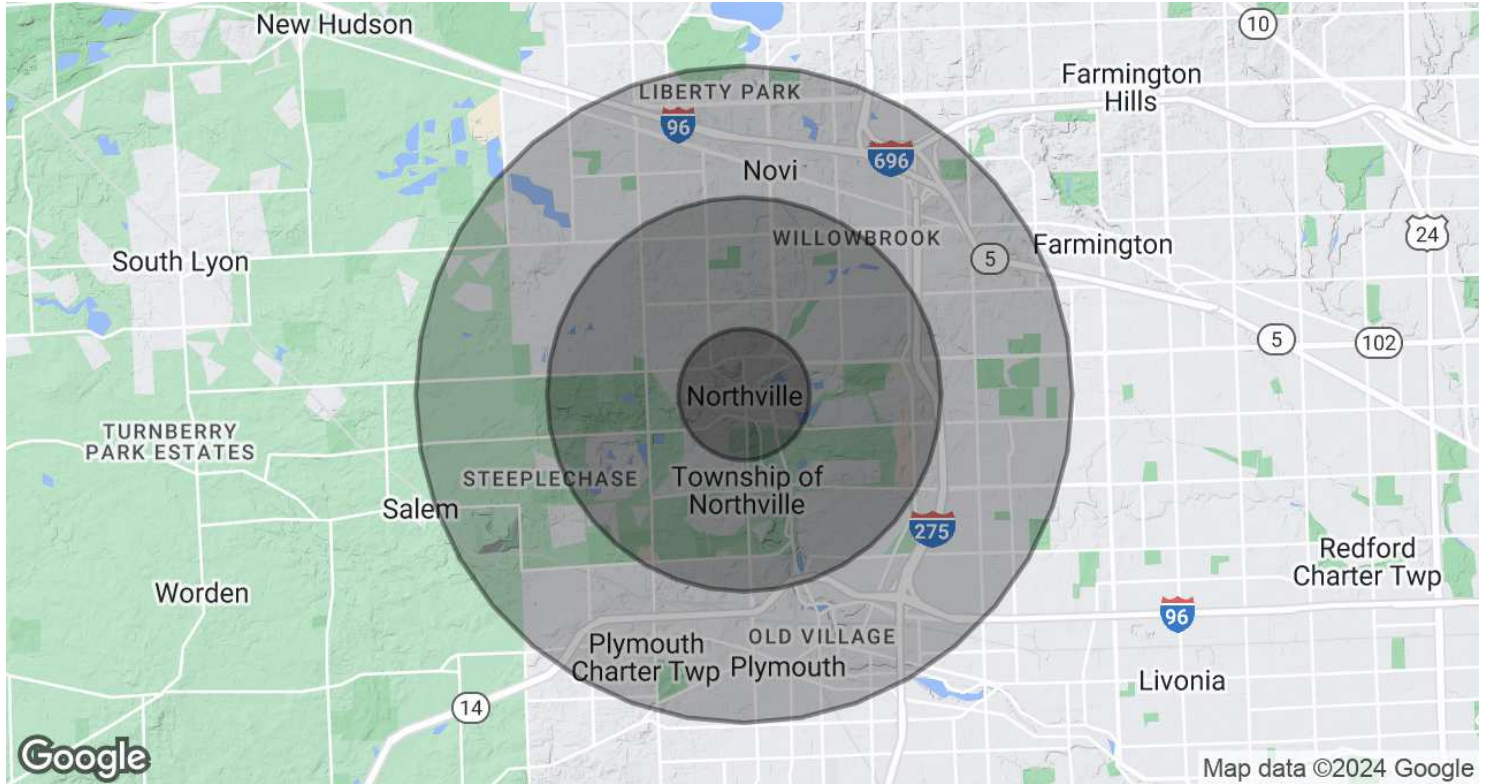


115 NORTH CENTER STREET, NORTHVILLE, MI 48167 // FOR LEASE

FLOOR PLANS



DEMOGRAPHICS MAP & REPORT



POPULATION	1 MILE	3 MILES	5 MILES
Total Population	8,060	55,590	140,600
Average Age	44.2	41.5	41.3
Average Age (Male)	41.3	39.8	39.7
Average Age (Female)	46.1	43.0	42.7

HOUSEHOLDS & INCOME	1 MILE	3 MILES	5 MILES
Total Households	3,454	21,604	54,839
# of Persons per HH	2.3	2.6	2.6
Average HH Income	\$110,719	\$121,647	\$111,905
Average House Value	\$343,617	\$362,335	\$319,159

* Demographic data derived from 2020 ACS - US Census

115 NORTH CENTER STREET, NORTHVILLE, MI 48167 // FOR LEASE

CONTACT US



FOR MORE INFORMATION, PLEASE CONTACT:



Matthew Schiffman
CEO/MANAGING MEMBER

D: 248.281.9907
C: 248.943.6449
matt@pacommercial.com



Mike Gunn
SENIOR ASSOCIATE

D: 248.331.0202
C: 248.924.7499
mike@pacommercial.com

P.A. Commercial

26555 Evergreen Road, Suite 1500
Southfield, MI 48076

P: 248.358.0100

F: 248.358.5300

pacommercial.com

Follow Us!

