

1,900 - 20,000 SF AVAILABLE



Office space for lease

25 GOLDSMITH STREET | GREENVILLE, SOUTH CAROLINA

CRESCENT
STARTUP
COMMUNITY

For further information

Ned Reynolds

Vice President
+1 336 260 3148
ned.reynolds@avisonyoung.com

Chris Prince

Vice President
+1 864 430 4957
chris.prince@avisonyoung.com

Will Hannah

Associate
+1 864 508 4525
will.hannah@avisonyoung.com

**AVISON
YOUNG**

CRESCENT ONE BUILDING

Crescent Startup Community, a large-scale mixed-use Innovation District provides a dedicated space for startups, entrepreneurs, and the development of innovative ideas and research. Crescent One sits on seven acres of land on Poinsett Highway. Phase One, a 56,000 square foot adaptive reuse project, was completed in Spring 2024. Phase Two will include 150,000 square feet of new build mixed-use space dedicated to innovation.

Phase 1 | 56,000 sf completed

Phase 2 | 150,000 sf planned



TENANT BENEFITS

Discounted Gym Membership

On-site fitness facilities to help maintain a healthy work-life balance

Outdoor Entertainment Venue

8,000 sf covered gazebo with restrooms and high speed wifi

Collaborative spaces

Meeting rooms, seminar rooms, and event spaces available

Swamp Rabbit Trail Expansion

Planned extension will connect to Poinsett Highway

Community and Innovation

A live/work/play/learn environment that connects early and growth-stage companies, fostering dynamic community

Proximity

Just 1.4 miles from downtown Greenville, providing easy access to the city's amenities



AVAILABILITIES

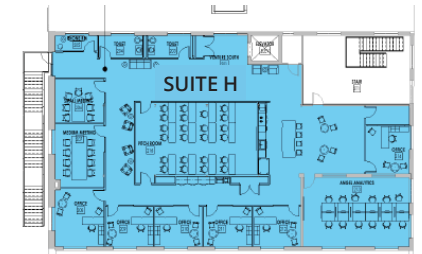
Suite C 1,912 sf

Suite E 2,415 sf

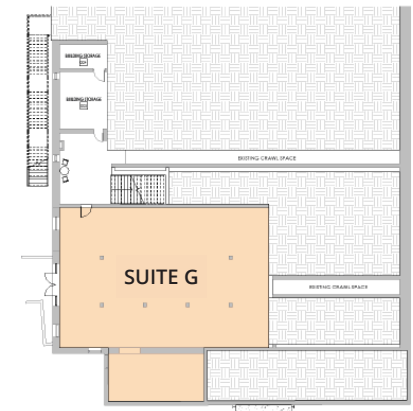
Suite F 5,871 sf

Suite G 3,137 sf

Suite H 5,773 sf

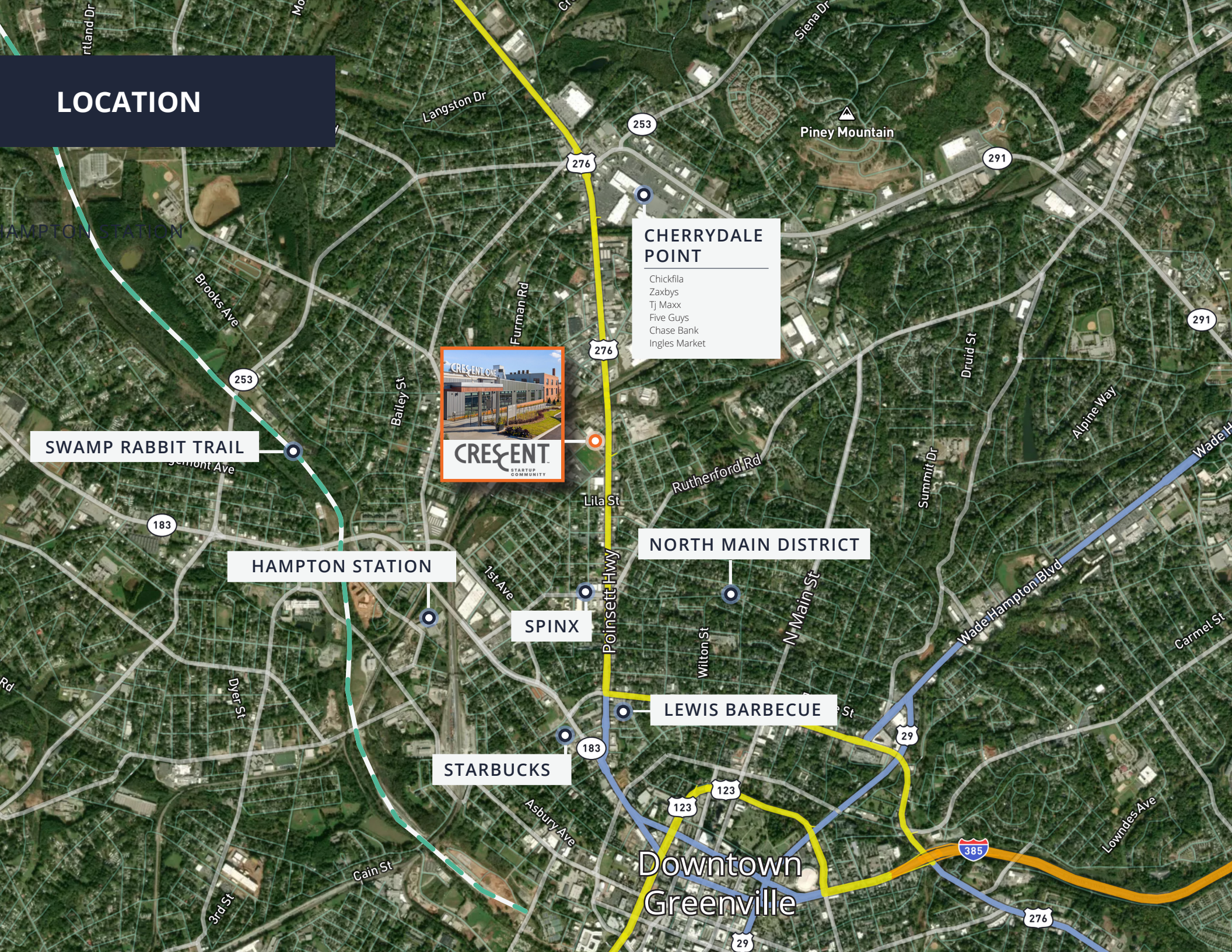


LEVEL 2



BASEMENT LEVEL

LOCATION





Flywheel Greenville is a vibrant coworking space and office workspace in the heart of Greenville, SC. The facility offers exceptional services designed to meet the diverse needs of professionals and businesses. From well-appointed private offices and private office suites to versatile meeting spaces, including conference rooms and meeting rooms, our venue provides a dynamic and flexible environment for work, collaboration, and innovation.

Crescent One Tenant Benefits



24/7 Access to amenities



Meeting spaces available to reserve



Outdoor entertainment venue for events



Monthly networking and education program



Diverse community of entrepreneurs



Beverage bar, wireless internet, and social commons



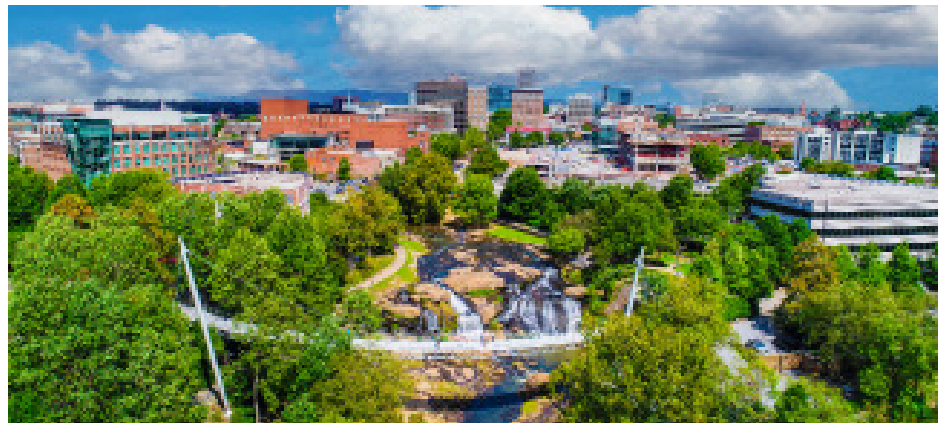
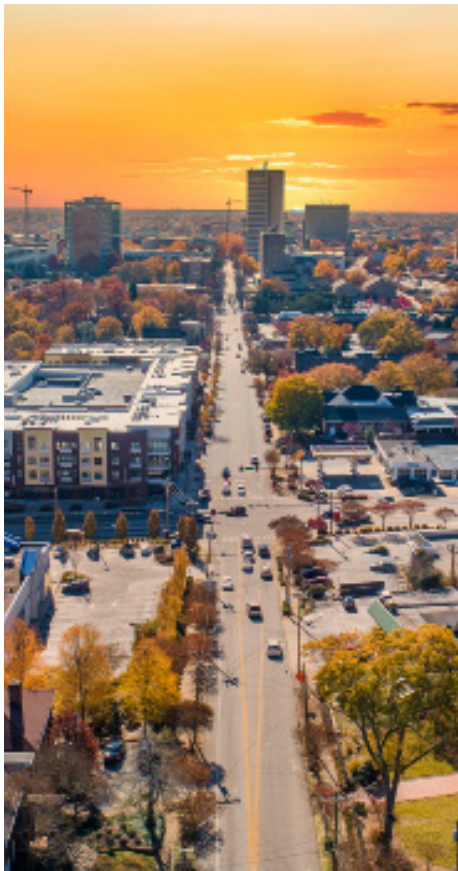
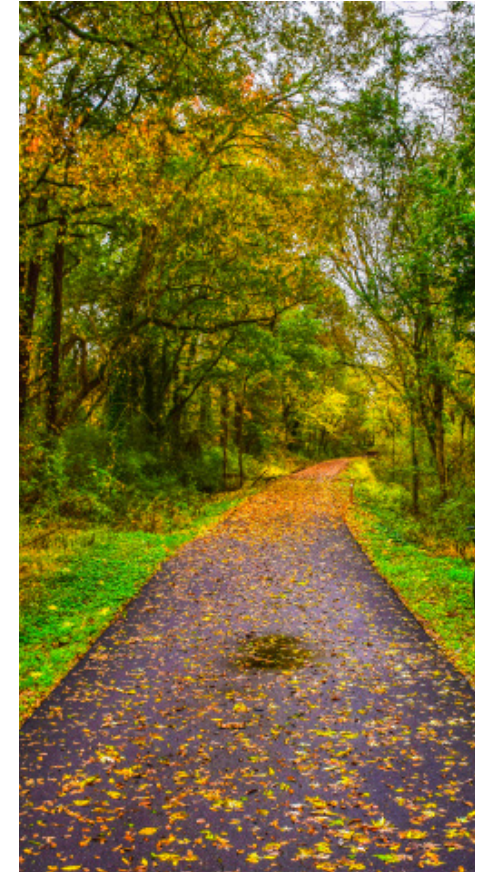
UPSTATE SOUTH CAROLINA

Nestled in the foothills of the Blue Ridge Mountains, the Greenville-Spartanburg area has combined traditional southern charm, stunning natural beauty and an unexpected “contemporary cool” to create one of America’s hottest emerging destinations and fastest growing cities.



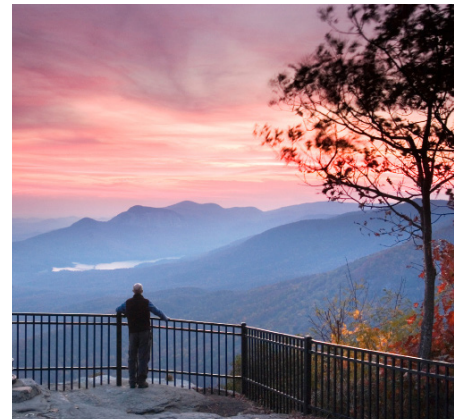
No. 4
Best Small City in the
United States

CONDÉ NAST TRAVELER, OCTOBER 2023



No. 6
The South’s Best
Cities 2024

SOUTHERN LIVING, APRIL 2024



Home to over
201
Fortune 500
companies



**AVISON
YOUNG**

CRES&ENT
STARTUP
COMMUNITY

**25 GOLDSMITH STREET
GREENVILLE, SOUTH CAROLINA**

For more information

Ned Reynolds

Vice President

+1 336 260 3148

ned.reynolds@avisonyoung.com

Chris Prince

Vice President

+1 864 430 4957

chris.prince@avisonyoung.com

Will Hannah

Associate

+1 864 508 4525

will.hannah@avisonyoung.com