

19000 FITZPATRICK STREET

DETROIT, MICHIGAN

69,600 SF
INDUSTRIAL
OPPORTUNITY FOR SALE
OR LEASE

3,400 SF HEATED GARAGE
AVAILABLE AT \$3,000 / MONTH,
INCLUDING UTILITIES

\$4.50/SF NNN
\$2,700,000

CBRE

THE OPPORTUNITY



35,900 SF
Available



Available
Immediately



3.49
Acres



17'
Building Height



±6,500 SF
Office



Nine (9)
Overhead Bay
Doors



1962
Year Built



Three (3)
Truck Docks



M-2
Zoning



1,600a/220v
Heavy Power



Sale Price:
\$2,700,000



Fully
Sprinklered



\$4.50/SF NNN
Lease Rate



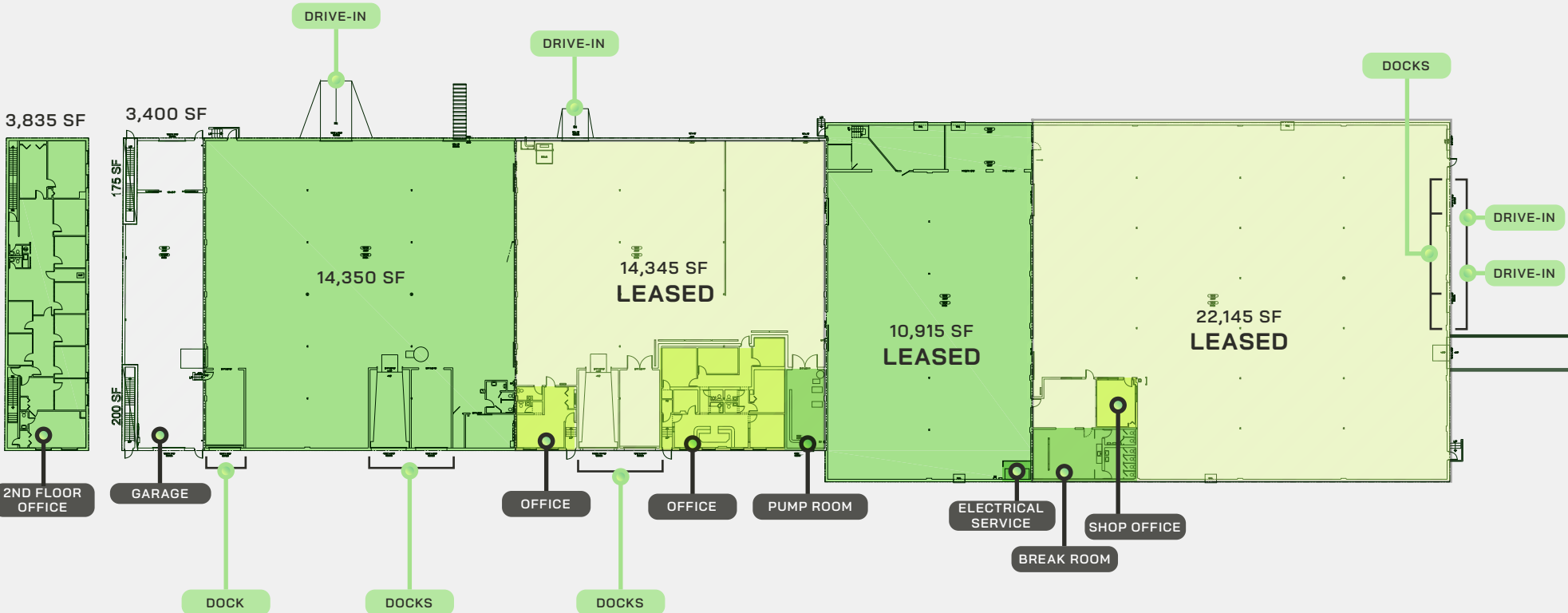
Recent Roof
Updates



PROPERTY PHOTOS



FLOOR PLAN



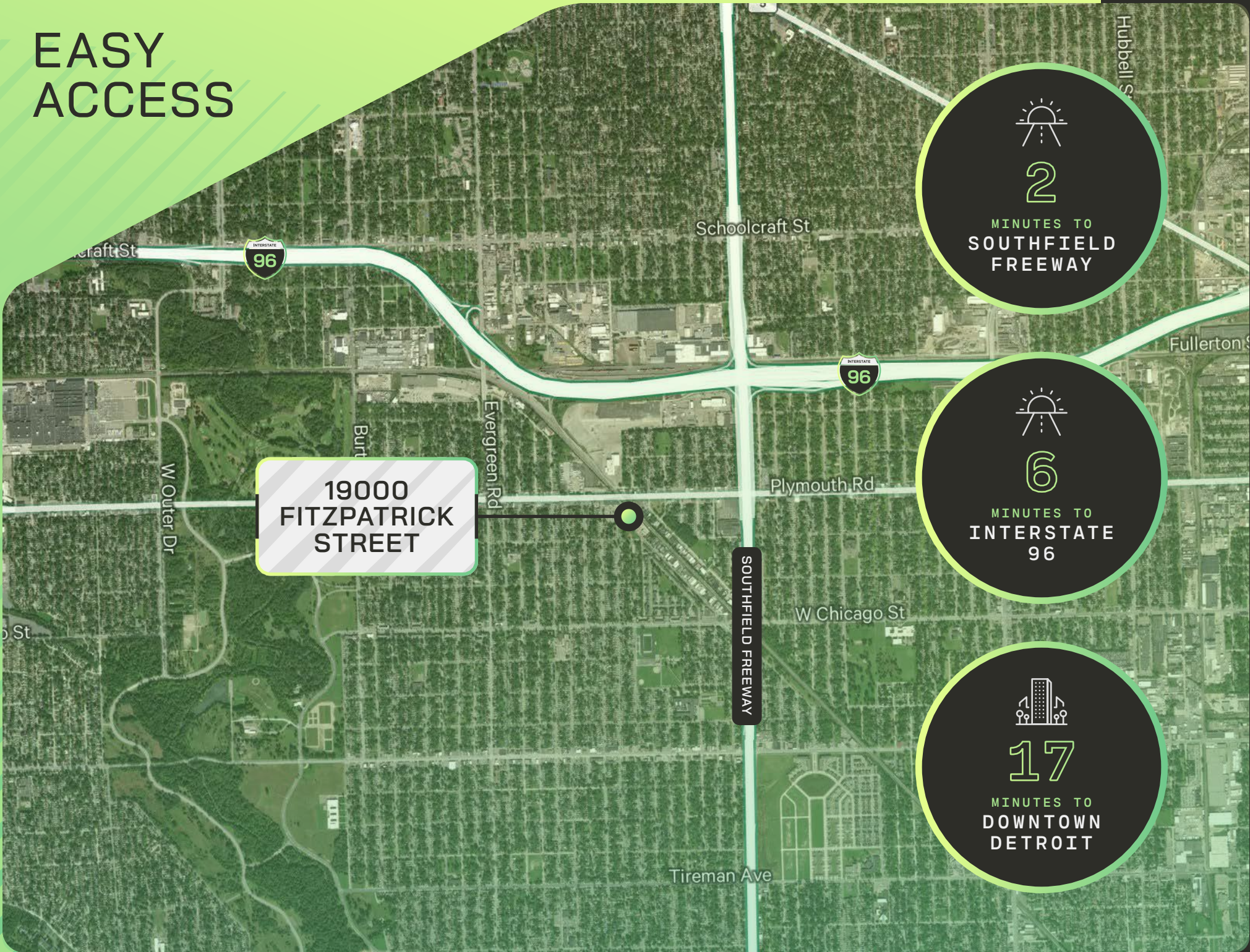


**DETROIT POLICE 6TH
PRECINCT HEADQUARTERS**

**19000
FITZPATRICK
STREET**

**AMPLE OUTSIDE
STORAGE + PARKING**

EASY ACCESS



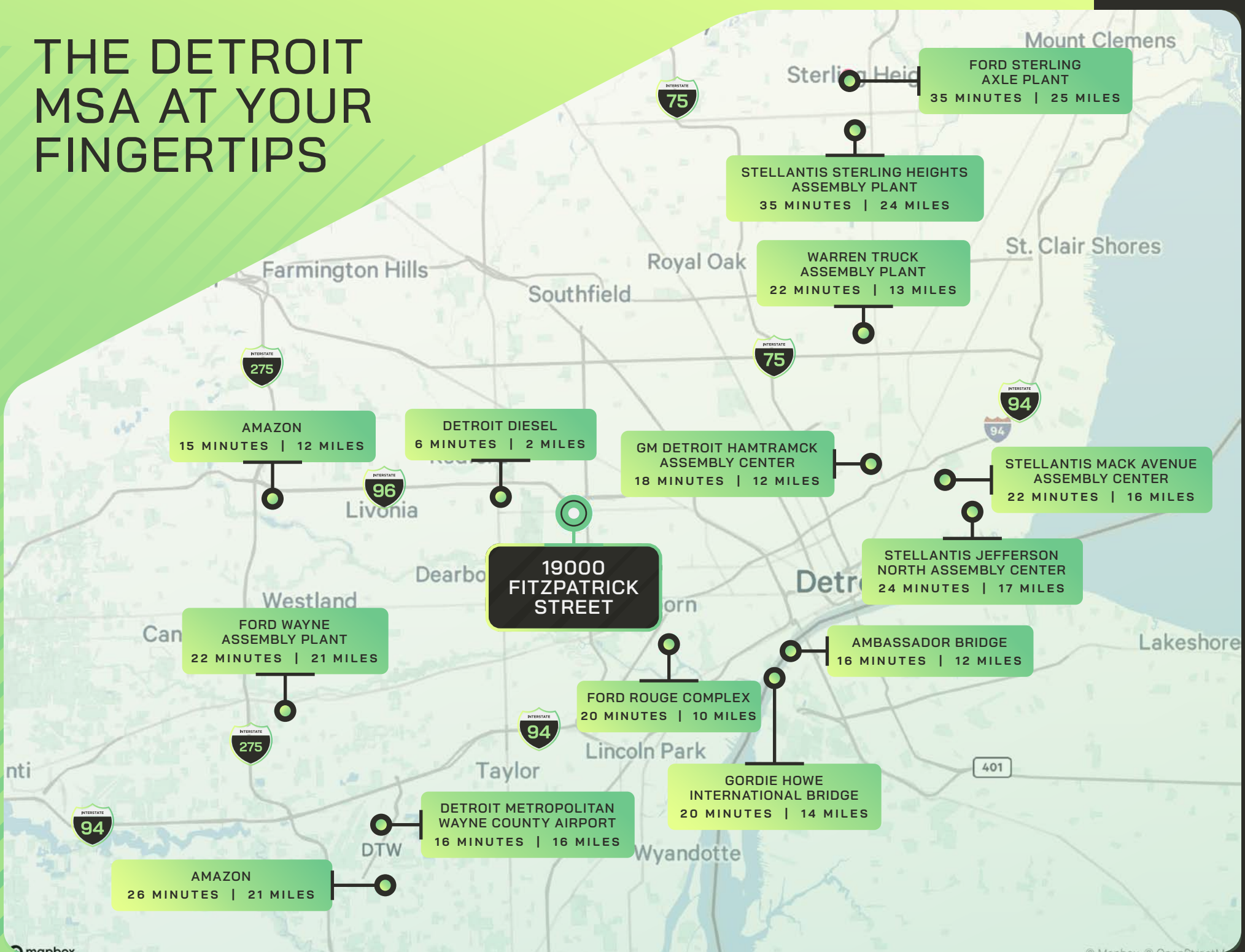
**19000
FITZPATRICK
STREET**


2
MINUTES TO
**SOUTHFIELD
FREEWAY**


6
MINUTES TO
**INTERSTATE
96**


17
MINUTES TO
**DOWNTOWN
DETROIT**

THE DETROIT MSA AT YOUR FINGERTIPS





19000 FITZPATRICK STREET

**MICHAEL
BALOW**

VICE PRESIDENT

+1 734 634 6558

michael.balow@cbre.com

CBRE

©2025 CBRE, Inc. All rights reserved. This information has been obtained from sources believed reliable, but has not been verified for accuracy or completeness. You should conduct a careful, independent investigation of the property and verify all information. Any reliance on this information is solely at your own risk. CBRE and the CBRE logo are service marks of CBRE, Inc. All other marks displayed on this document are the property of their respective owners, and the use of such logos does not imply any affiliation with or endorsement of CBRE. Photos herein are the property of their respective owners. Use of these images without the express written consent of the owner is prohibited. PMStudio_March2025