



# 2935 Baseline Road

Boulder, CO



### Michael-Ryan McCarty

mccarty@gibbonswhite.com  
(303) 586-5939

### Angela Topel

angela@gibbonswhite.com  
(303) 586-5921

### Patrick Weeks

patrick@gibbonswhite.com  
(303) 586-5935

www.gibbonswhite.com

 **Property Info & Gallery**

 **View Map**

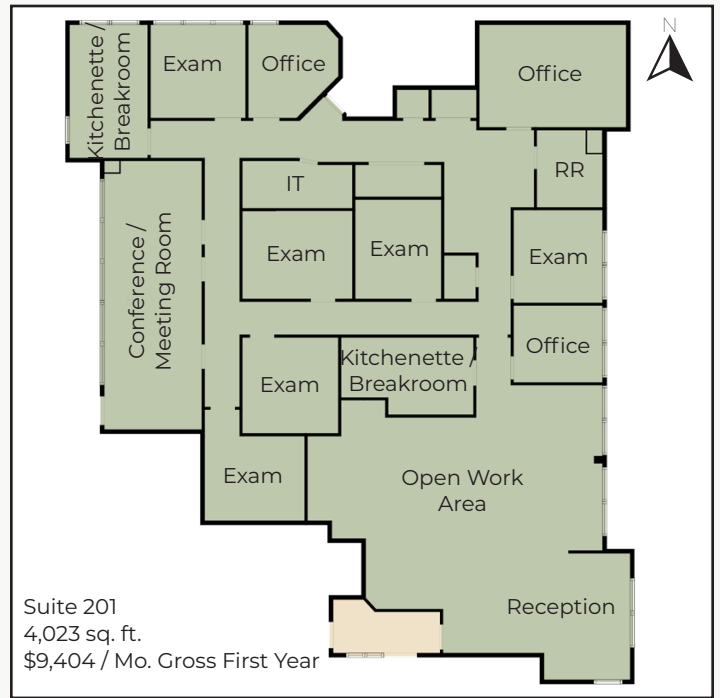
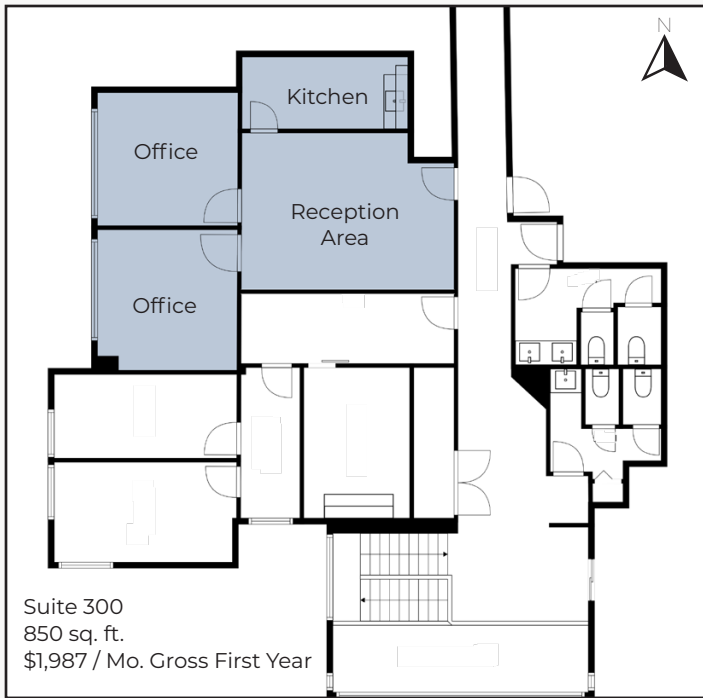
## Central South Boulder Office Space for Lease

Available Space	850 - 4,023 sq. ft.
Lease Rate / sq. ft.	<del>\$16.00 - \$18.50 NNN</del> <b>\$10.50 NNN</b>
Expenses / sq. ft.	\$17.55*

\*Including Utilities

- **Introductory Rate of Only \$10.50 NNN for the First Year!**
- **Suite 201** - Medical or Professional Office with Grand Lobby Entrance, 6 Exam Rooms with Sinks, 3 Offices, Large Conference Space, Large Open Work Area & Reception, 2 Kitchenette / Breakrooms, & Washer/Dryer Hookups - Available 5/1/2025
- **Suite 300** - Beautiful 2 Office Suite with Amazing Views, Spacious Reception / Waiting Area & Kitchenette Breakroom
- Direct Access to US 36 & Close Proximity to Great Selection of Restaurants, Cafés, Sprouts Farmer's Market & More

The information included has been obtained from sources believed reliable. While we do not doubt the accuracy of the information, it has not been verified and no guarantee, warranty, or representation is being made.



The information included has been obtained from sources believed reliable. While we do not doubt the accuracy of the information, it has not been verified and no guarantee, warranty, or representation is being made.