



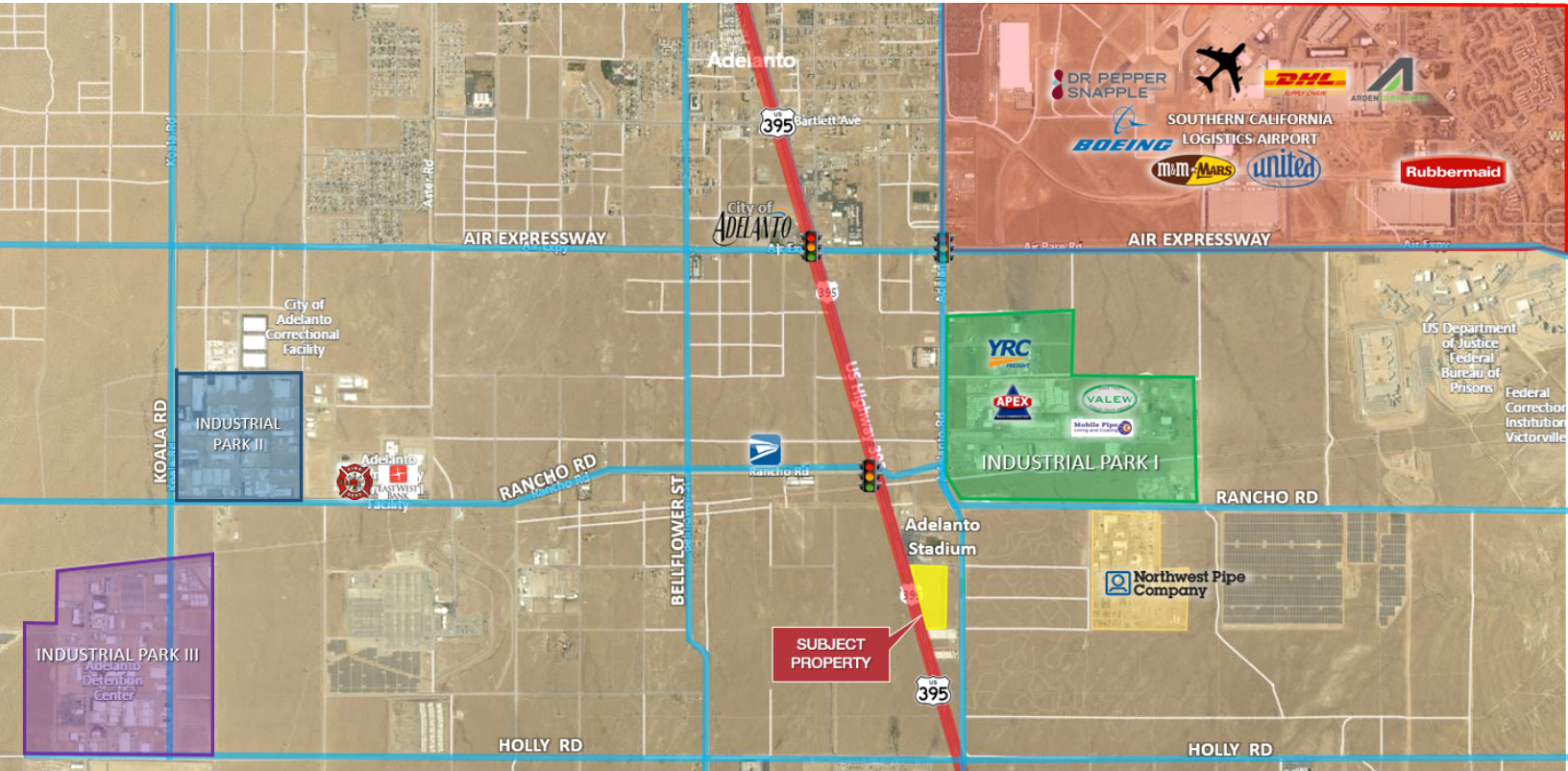
FOR SALE



LAND



±17 ACRES



Highway 395 & Adelanto Road

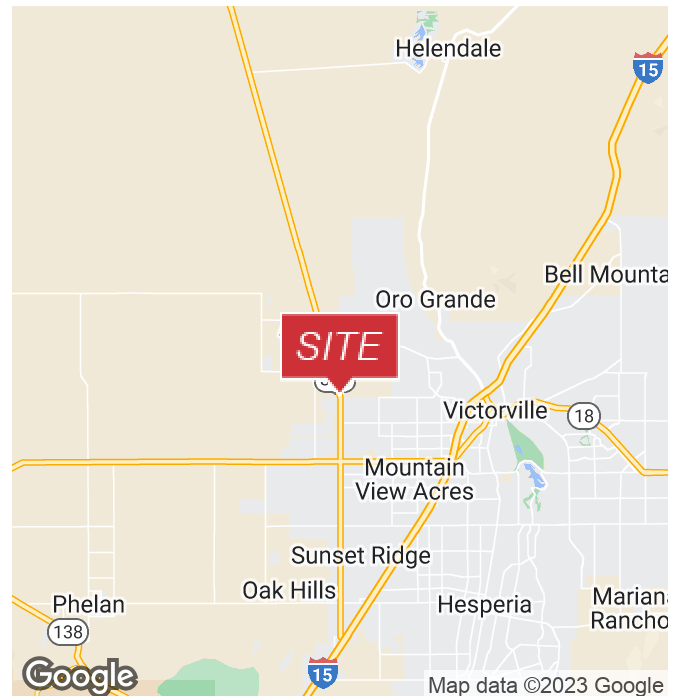
Adelanto, California 92301

Property Highlights

- ASKING: \$2,295,000
- SIZE: ±17 Acres
- APN: 3128-221-05
- ZONING: MU - Mixed Use

Property Description

- Offering over 1,350 feet of frontage on Highway 395
- Adjacent to Adelanto Stadium
- SCLA Nearby



Mehdi Mostaedi, ALC
 Executive Managing Director | 760.780.4210
 mmostaedi@naicapital.com | CalDRE #01392527





FOR SALE



LAND



±17 ACRES



Mehdi Mostaedi, ALC
Executive Managing Director | 760.780.4210
mmostaedi@naicapital.com | CalDRE #01392527



www.naicapital.com

NO WARRANTY, EXPRESS OR IMPLIED, IS MADE AS TO THE ACCURACY OF THE INFORMATION CONTAINED HEREIN. THIS INFORMATION IS SUBMITTED SUBJECT TO ERRORS, OMISSIONS, CHANGE OF PRICE, RENTAL OR OTHER CONDITIONS, WITHDRAWAL WITHOUT NOTICE, AND IS SUBJECT TO ANY SPECIAL LISTING CONDITIONS IMPOSED BY OUR PRINCIPALS, COOPERATING BROKERS, BUYERS, TENANTS AND OTHER PARTIES WHO RECEIVE THIS DOCUMENT SHOULD NOT RELY ON IT, BUT SHOULD USE IT AS A STARTING POINT OF ANALYSIS, AND SHOULD INDEPENDENTLY CONFIRM THE ACCURACY OF THE INFORMATION CONTAINED HEREIN THROUGH A DUE DILIGENCE REVIEW OF THE BOOKS, RECORDS, FILES AND DOCUMENTS THAT CONSTITUTE RELIABLE SOURCES OF THE INFORMATION DESCRIBED HEREIN. LOGOS ARE FOR IDENTIFICATION PURPOSES ONLY AND MAY BE TRADEMARKS OF THEIR RESPECTIVE COMPANIES. NAI CAPITAL COMMERCIAL, INC. CAL DRE LIC. #02130474