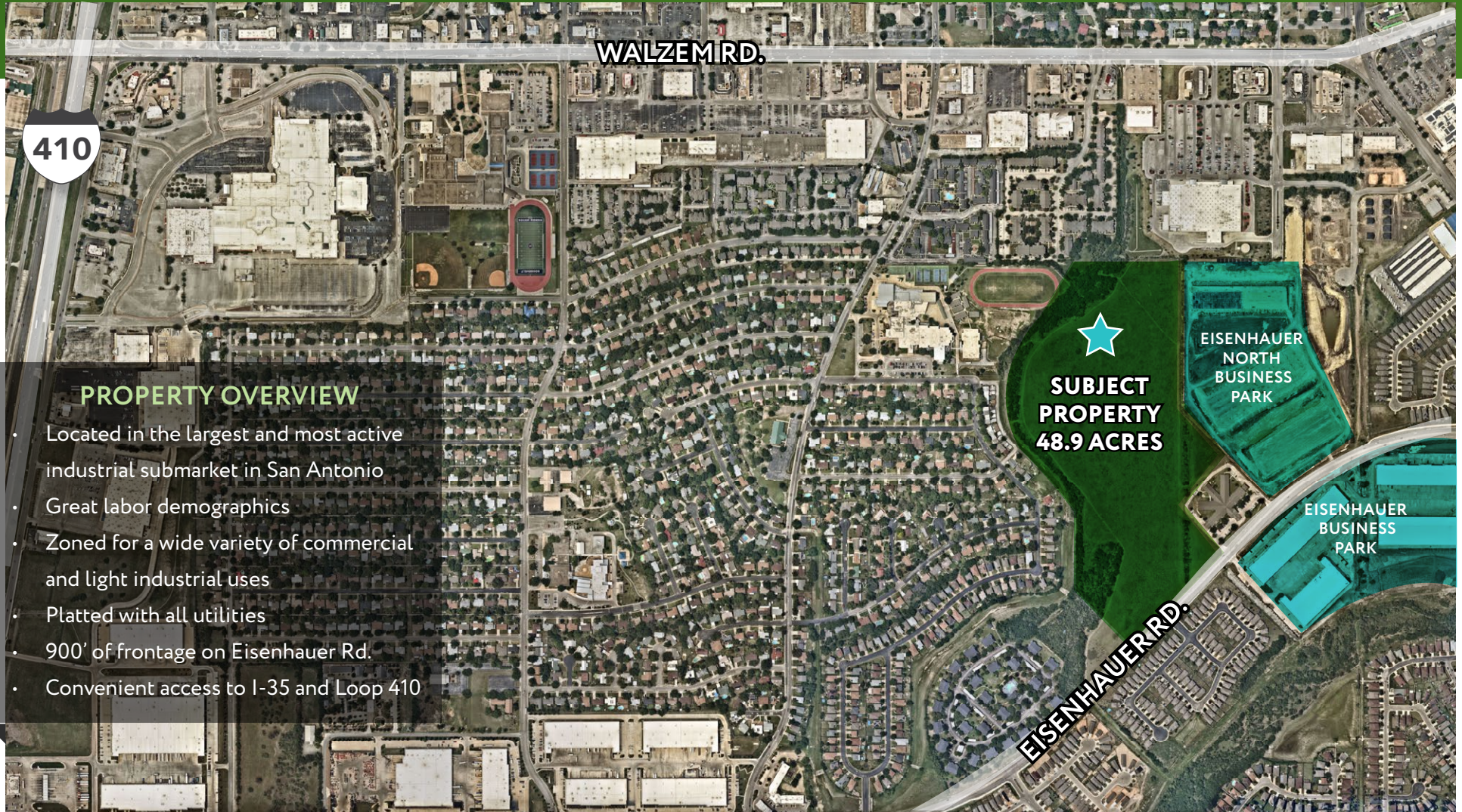


FOR SALE - 48.9 ACRES ON EISENHAUER RD.

INDUSTRIAL DEVELOPMENT OPPORTUNITY IN NORTHEAST SAN ANTONIO SUBMARKET



PROPERTY OVERVIEW

- Located in the largest and most active industrial submarket in San Antonio
- Great labor demographics
- Zoned for a wide variety of commercial and light industrial uses
- Platted with all utilities
- 900' of frontage on Eisenhauer Rd.
- Convenient access to I-35 and Loop 410

FOR MORE INFORMATION, CONTACT:

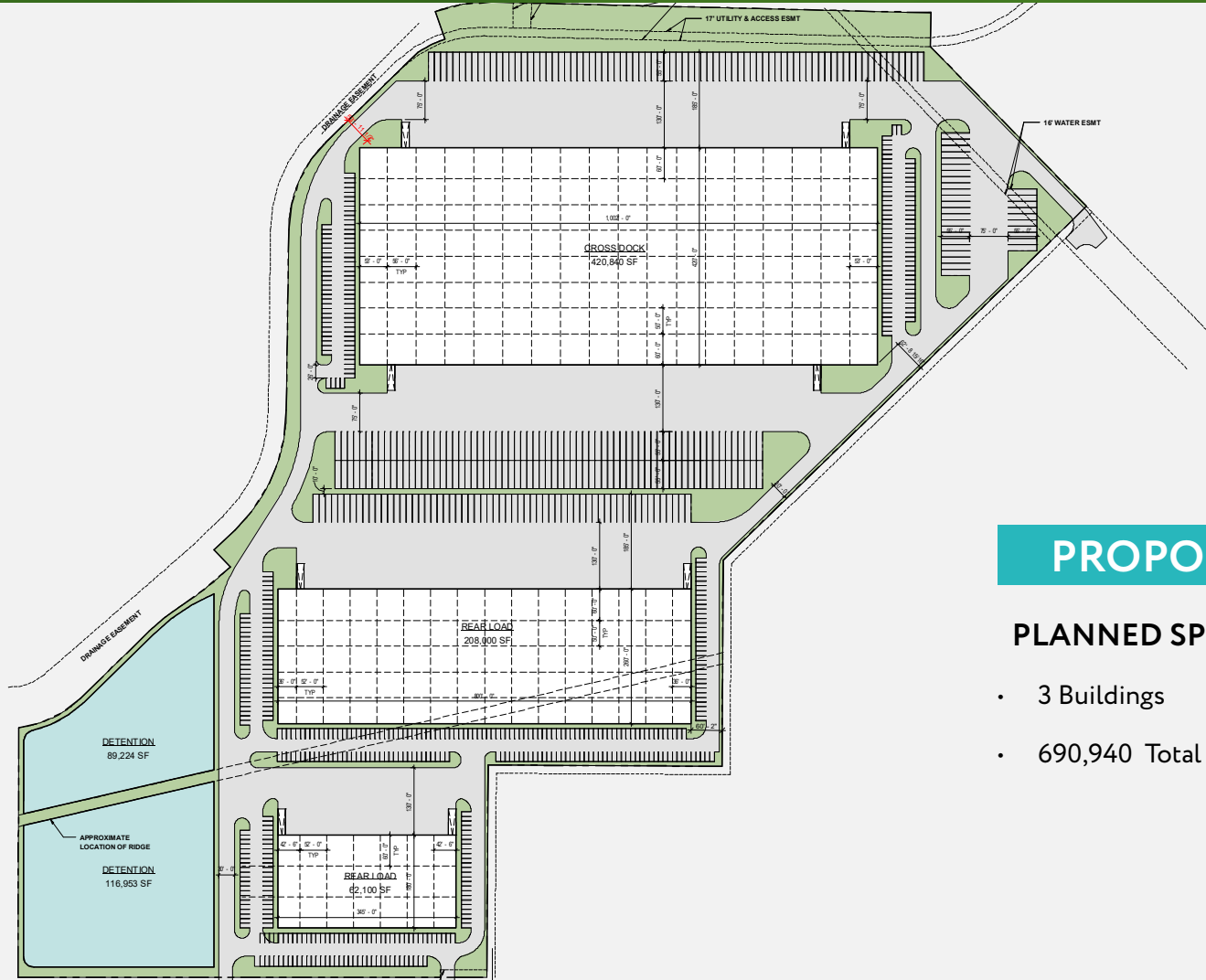
MICHAEL T. KENT
210.298.8514 | michael.kent@streamrealty.com

PAYTON RION
210.298.8514 | payton.rion@streamrealty.com



FOR SALE - 48.9 ACRES ON EISENHAUER RD.

INDUSTRIAL DEVELOPMENT OPPORTUNITY IN NORTHEAST SAN ANTONIO SUBMARKET



PROPOSED SITE PLAN

PLANNED SPECS:

- 3 Buildings
- 569 Car parks
- 690,940 Total SF
- 312 Trailer parks

FOR MORE INFORMATION, CONTACT:

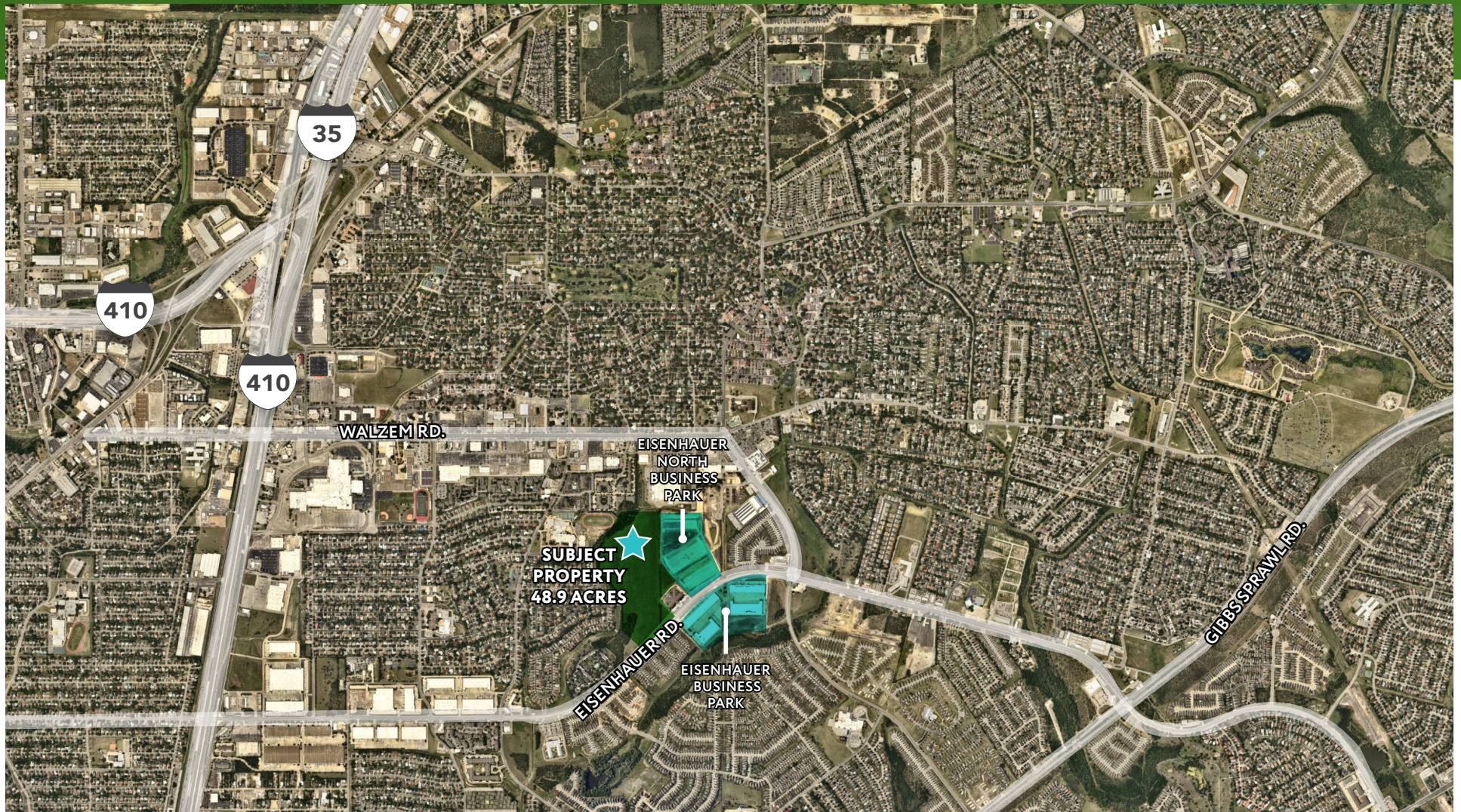
MICHAEL T. KENT
210.298.8514 | michael.kent@streamrealty.com

PAYTON RION
210.298.8514 | payton.rion@streamrealty.com



FOR SALE - 48.9 ACRES ON EISENHAUER RD.

INDUSTRIAL DEVELOPMENT OPPORTUNITY
IN NORTHEAST SAN ANTONIO SUBMARKET



FOR MORE INFORMATION, CONTACT:

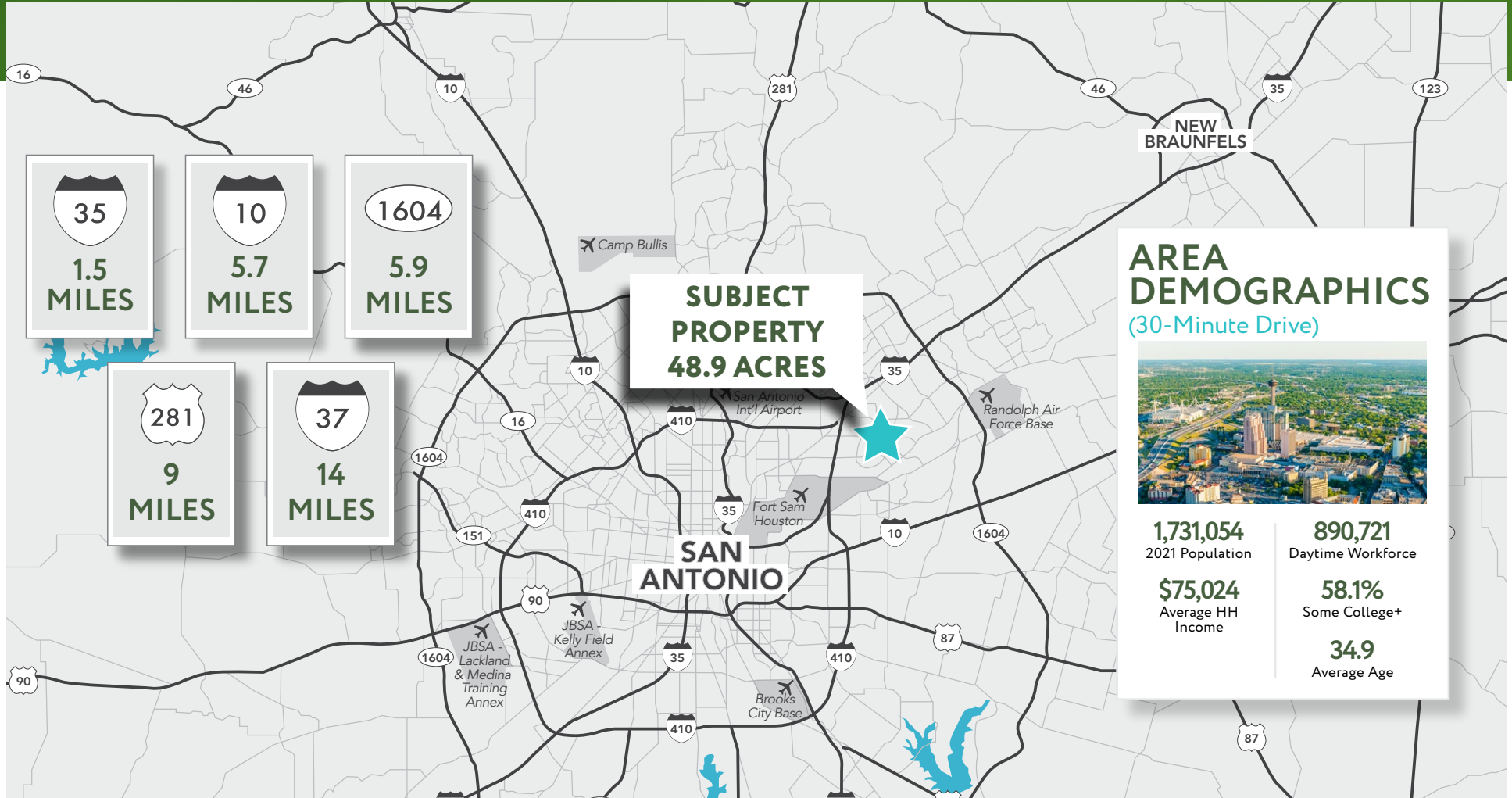
MICHAEL T. KENT
210.298.8514 | michael.kent@streamrealty.com

PAYTON RION
210.298.8514 | payton.rion@streamrealty.com


STREAM

FOR SALE - 48.9 ACRES ON EISENHAUER RD.

INDUSTRIAL DEVELOPMENT OPPORTUNITY IN NORTHEAST SAN ANTONIO SUBMARKET



**SUBJECT
PROPERTY
48.9 ACRES**

AREA DEMOGRAPHICS (30-Minute Drive)



1,731,054 2021 Population	890,721 Daytime Workforce
\$75,024 Average HH Income	58.1% Some College+
	34.9 Average Age

FOR MORE INFORMATION, CONTACT:

MICHAEL T. KENT
210.298.8514 | michael.kent@streamrealty.com

PAYTON RION
210.298.8514 | payton.rion@streamrealty.com



Copyright © 2022 Stream Realty Partners. All rights reserved.
The information contained herein was obtained from sources believed reliable; however, Stream Realty Partners, L.P. make no guarantees, warranties, or representations as to the completeness or accuracy thereof.
The presentation of this property is submitted subject to errors, change of price, or conditions, prior sale or lease, or withdrawal without notice.