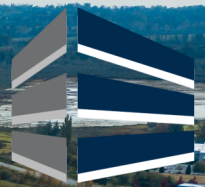
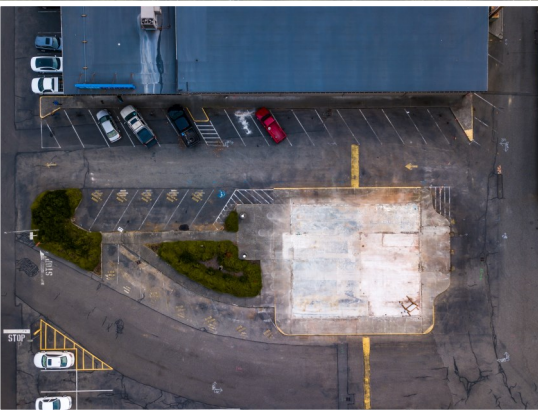


1781 Main Street Ferndale, Washington



LAND LEASE



PROPERTY FEATURES

- ⇒ Large Freeway Visible Commercial Parcel Available for Ground Lease
- ⇒ Ideal combination of location, visibility, traffic counts and access
- ⇒ Approximately 36,000 SF of paved parcel
- ⇒ In the path of continued retail and residential progress in the growing community of Ferndale

Information contained herein has been obtained from the owner of the property or from other sources that we deem reliable. We have no reason to doubt its accuracy, but we do not guarantee it.



Jeff Johnson

WINDERMERE REAL ESTATE/WHATCOM INC / BROKER

jajohnson@windermere.com / (360) 319-8358

WWW.WRECOMMERCIAL.COM / WWW.JEFFJOHNSONREALESTATE.COM





DEMOGRAPHICS

	1 Mile	3 Miles	5 Miles
Population 2017	1,444	18,303	31,657
Projection 2022	1,513	19,334	33,374
Med HH Value	\$272,661	\$281,981	\$284,080

TRAFFIC COUNTS

40,000—80,000 Cars per day on I-5
 20,000—40,000 on Main St. Overpass

Information contained herein has been obtained from the owner of the property or from other sources that we deem reliable. We have no reason to doubt its accuracy, but we do not guarantee it.



Jeff Johnson

WINDERMERE REAL ESTATE/WHATCOM INC / BROKER
 jajohnson@windermere.com / (360) 319-8358
 WWW.WRECOMMERCIAL.COM / WWW.JEFFJOHNSONREALESTATE.COM






Windermere
COMMERCIAL

Jeff Johnson

WINDERMERE REAL ESTATE/WHATCOM INC / BROKER
jajohnson@windermere.com / (360) 319-8358
WWW.WRECOMMERCIAL.COM / WWW.JEFFJOHNSONREALESTATE.COM






Windermere
COMMERCIAL

Jeff Johnson

WINDERMERE REAL ESTATE/WHATCOM INC / BROKER
jajohnson@windermere.com / (360) 319-8358
WWW.WRECOMMERCIAL.COM / WWW.JEFFJOHNSONREALESTATE.COM

