

for sale/lease

FIX/MADORE

ASHLEY HAYES

 urbanAsh
pointe 3 REAL ESTATE

BLAKE TAYLOR

WCCR

West Coast Commercial Realty



steps away TO SEATTLE'S NEW WATERFRONT





Fix Madore Building 1501 Western Avenue, Seattle, WA 98101

SPACE SUMMARY

mail: 1512 Alaskan Way
legal: 1507 Western Ave
#C010
parcel #: 257028-0010
zoning: Pike Market
Mixed (PMM)
size: 2,010 SF
hoa: \$1,577.56
insurance: \$42.33
taxes: \$200.79
mid: \$26.68

2,010 SF
**commercial &
condo**
+6 parking stalls





a front seat TO EVERYTHING

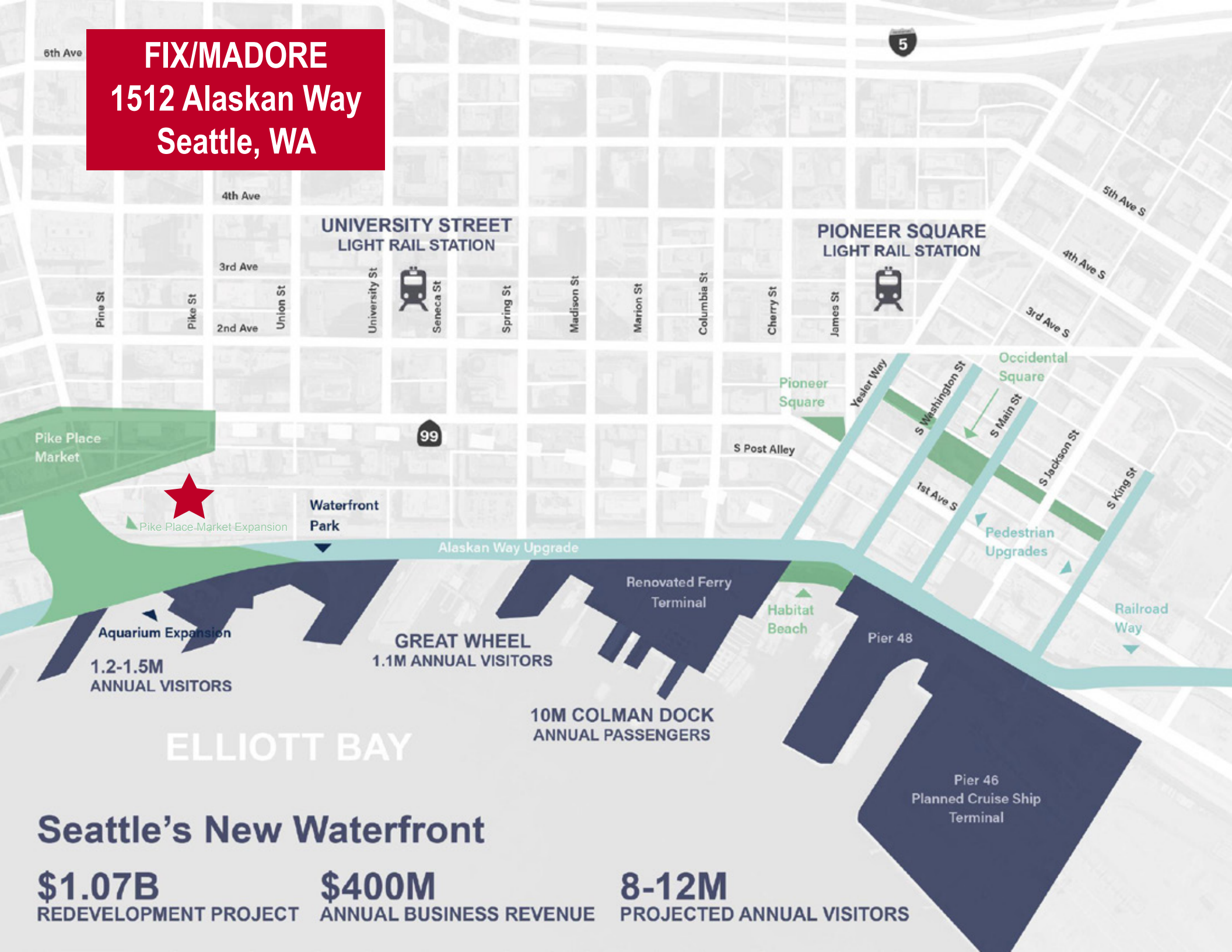


PIKE ST. COFFEE

minutes to walk:

Pike Place Market	1
Seattle Aquarium	1
Waterfront Park Promenade.....	1
Post Alley	3
Downtown Core	4
Great Wheel.....	4
Coleman Dock Ferry Terminal	13

FIX/MADORE
1512 Alaskan Way
Seattle, WA



Seattle's New Waterfront

\$1.07B
REDEVELOPMENT PROJECT

\$400M
ANNUAL BUSINESS REVENUE

8-12M
PROJECTED ANNUAL VISITORS



Pike Place Market public elevator provides quick access from Western Avenue down to the entry of 1512 Alaskan way and the attached parking garage



Pike Street Hillclimb attracts tourists and locals to shop and dine as they walk from Seattle's historic waterfront to the Pike Street Market



PIKE PLACE MARKET

WESTERN AVENUE

ELLIOT WAY

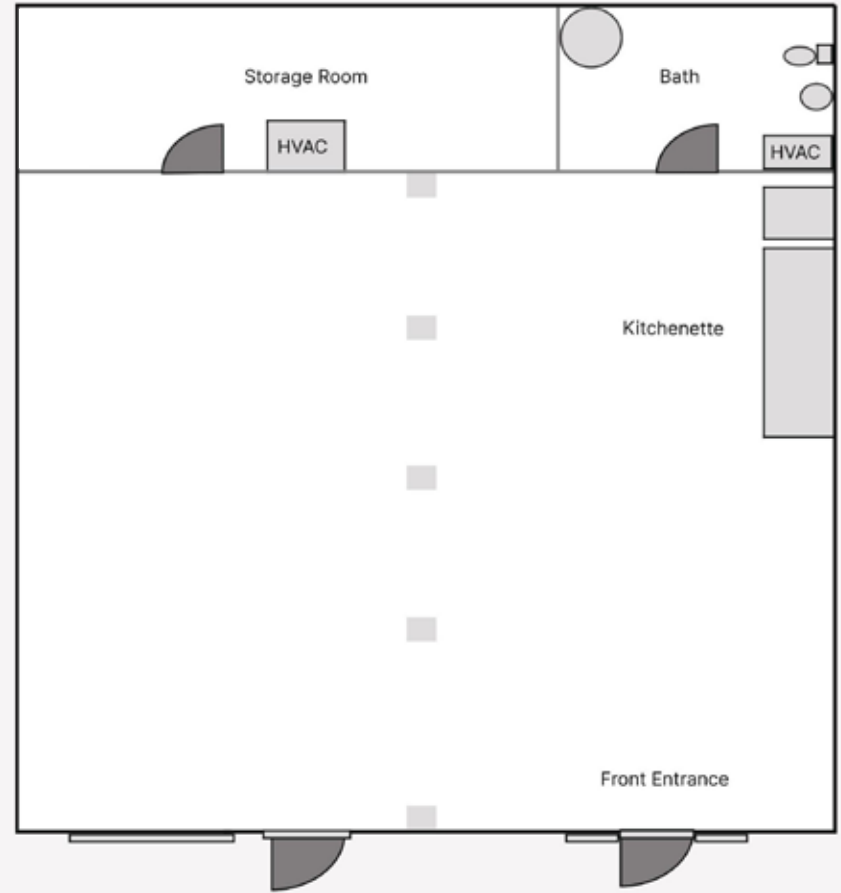
SEATTLE AQUARIUM
OCEAN PAVILION ADDITION

PARKING

accessibility



6 tandem parking stalls directly in front



one-of-a kind
2,010 square feet





FIX/MADORE

ASHLEY HAYES

 **urbanAsh**
pointe 3 REAL ESTATE

BLAKE TAYLOR

WCCR

West Coast Commercial Realty