



Industrial Space Available for Lease

**1036 NE JIB COURT
LEE'S SUMMIT, MISSOURI**

Property Highlights

- 1,750 to 4,650 (±) sf space available
- 1 dock high doors
- 19' ceiling clearance
- Conveniently located in Lee's Summit just off of I-470
- For lease at \$7.50/sf, Net

For information, please contact:

Mark C. Long CRE, SIOR, CCIM, LEED AP
President and Chief Executive Officer
t 816-512-1011
mlong@nzimmer.com

Philip J. Botana
Associate Director
t 816-512-1008
pbotana@nzimmer.com

1220 Washington Street, Suite 300
Kansas City, MO 64105

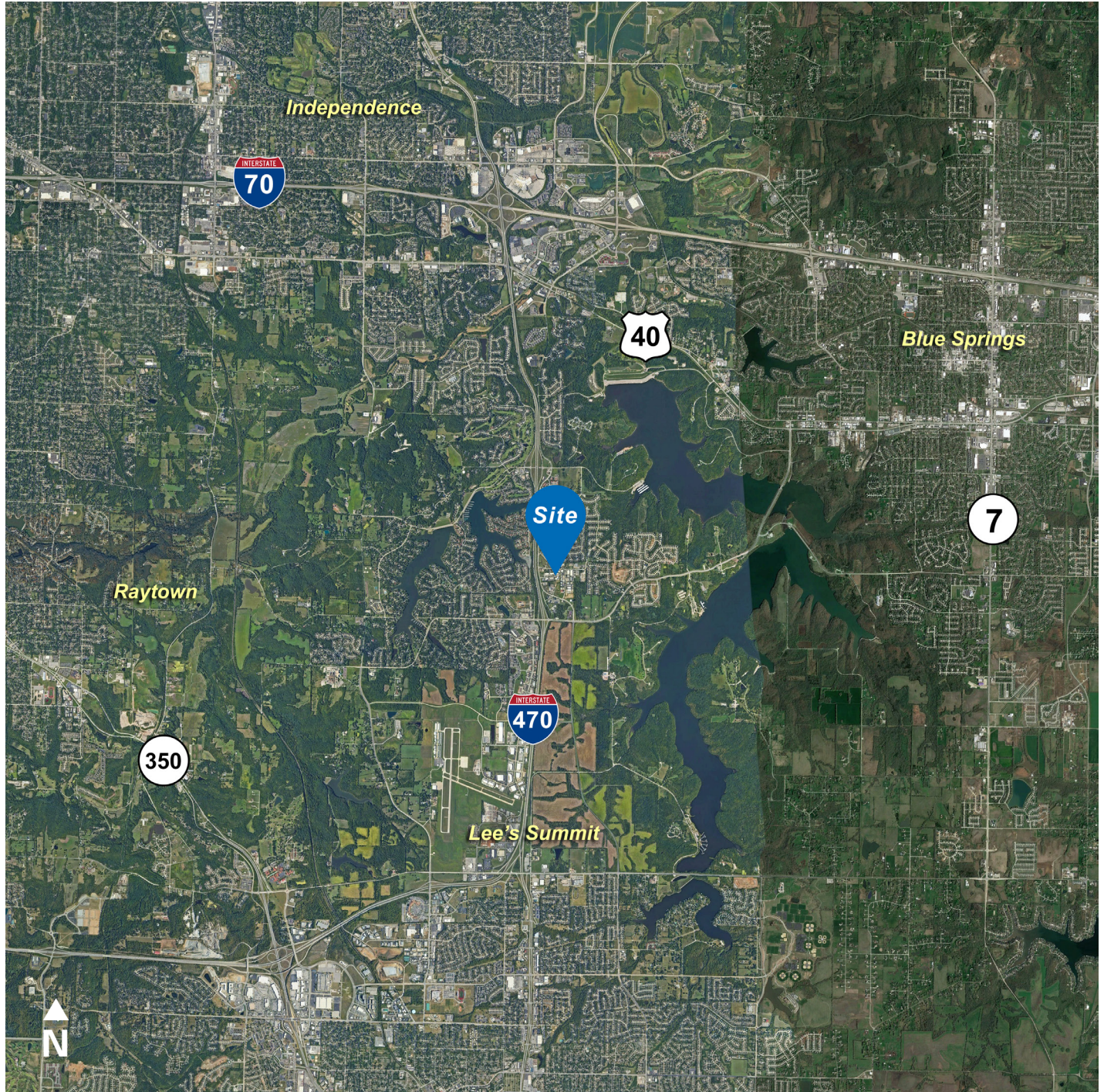
nrmkzimmer.com



NEWMARK
ZIMMER

The information contained herein has been obtained from sources deemed reliable but has not been verified and no guarantee, warranty or representation, either express or implied, is made with respect to such information. Terms of sale or lease and availability are subject to change or withdrawal without notice.

1036 NE JIB COURT, LEE'S SUMMIT, MISSOURI



CONTACT

Mark C. Long CRE, SIOR, CCIM, LEED AP

President and Chief Executive Officer

t 816-512-1011

mlong@nzimmer.com

Philip J. Botana

Associate Director

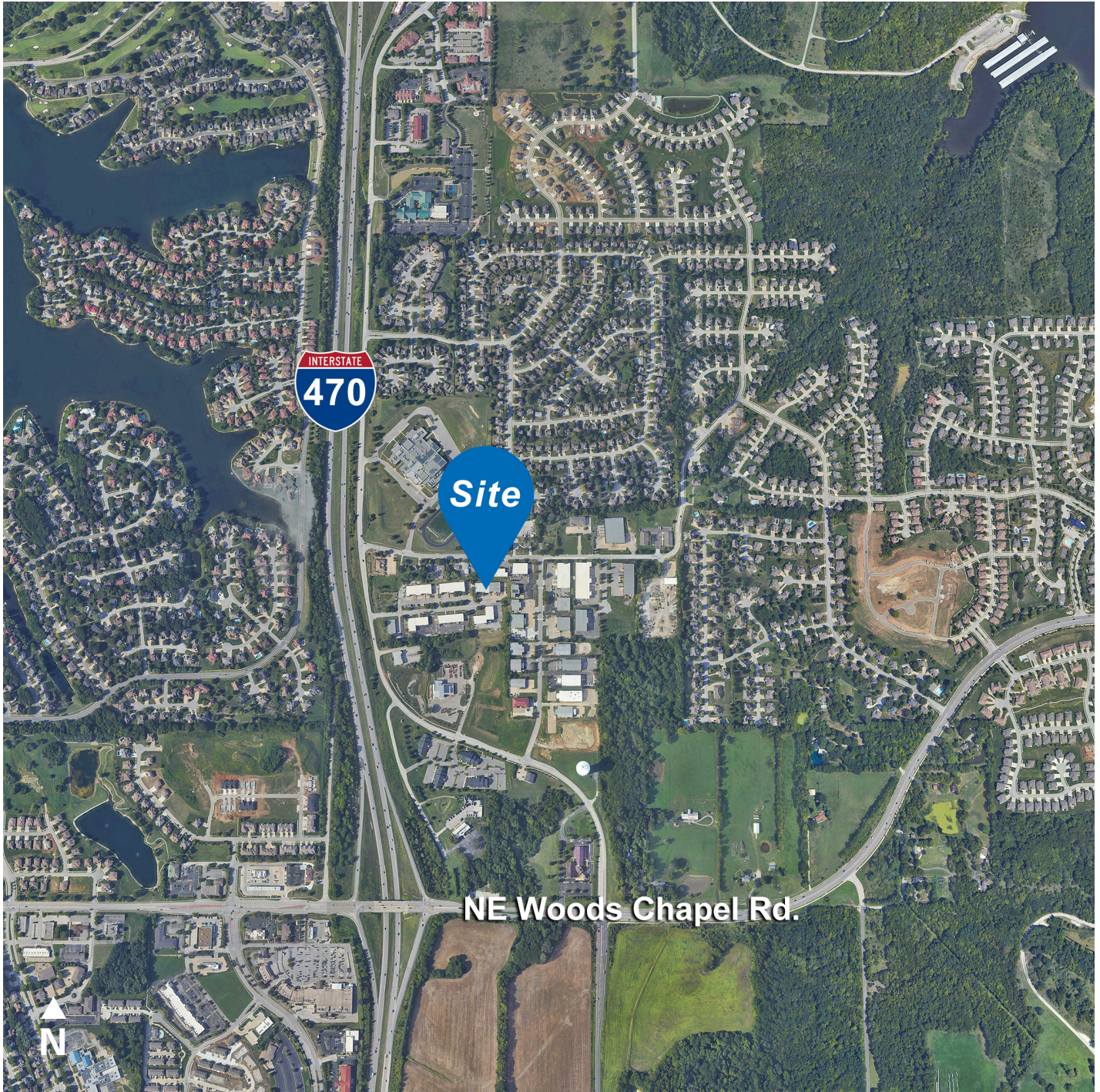
t 816-512-1008

pbotana@nzimmer.com

nmrkzimmer.com

NEWMARK
ZIMMER

1036 NE JIB COURT, LEE'S SUMMIT, MISSOURI



CONTACT

Mark C. Long CRE, SIOR, CCIM, LEED AP

President and Chief Executive Officer

t 816-512-1011

mlong@nzimmer.com

Philip J. Botana

Associate Director

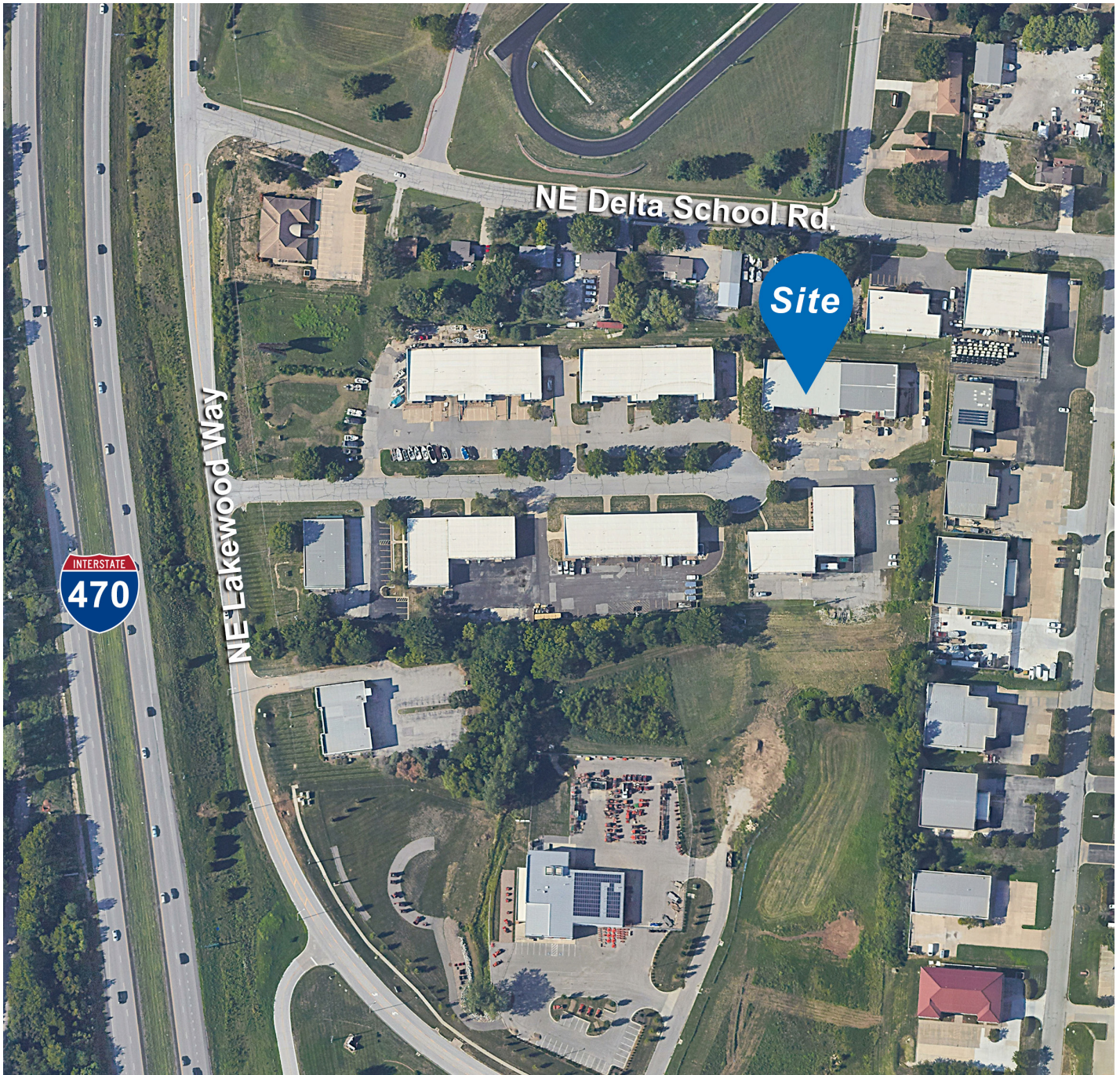
t 816-512-1008

pbotana@nzimmer.com

nmrkzimmer.com

NEWMARK
ZIMMER

1036 NE JIB COURT, LEE'S SUMMIT, MISSOURI



CONTACT

Mark C. Long CRE, SIOR, CCIM, LEED AP

President and Chief Executive Officer

t 816-512-1011

mlong@nzimmer.com

nmrkzimmer.com

Philip J. Botana

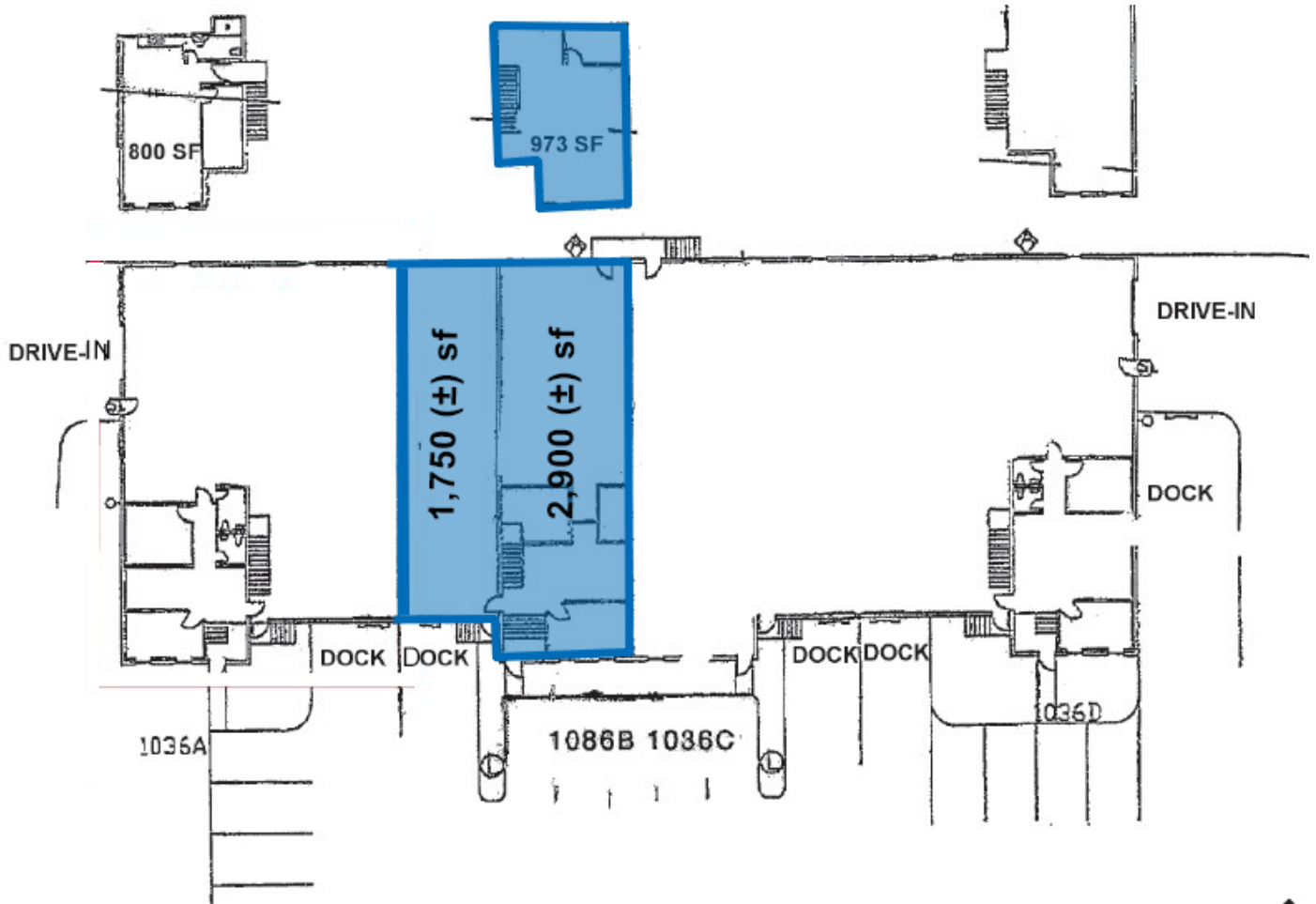
Associate Director

t 816-512-1008

pbotana@nzimmer.com

NEWMARK
ZIMMER

Site Plan



CONTACT

Mark C. Long CRE, SIOR, CCIM, LEED AP

President and Chief Executive Officer

t 816-512-1011

mlong@nzimmer.com

Philip J. Botana

Associate Director

t 816-512-1008

pbotana@nzimmer.com

nmrkzimmer.com