

**5145 County Road 101**  
Medina, MN

# Retail Space For Lease



Demographics	2 Mile	5 Mile	10 Mile
Avg HH Income	\$187,025	\$156,312	\$122,655
Median HH Income	\$165,557	\$129,129	\$94,687
2022 Population	18,029	103,629	413,154
2027 Est. Population	19,435	108,365	427,955

- Target-anchored retail
- Quality tenant base

**Space available:** Up to 4,832 sf (divisible)

**Net lease rate:** Negotiable

**CAM/Tax:** \$12.01 per sf (est.)

**Parking:** Plentiful surface parking (5.55 stalls / 1,000 sf)

**Brent Jacobson**

Executive VP  
612-355-2609

**Ben Krsnak**

Executive VP  
612-355-2608

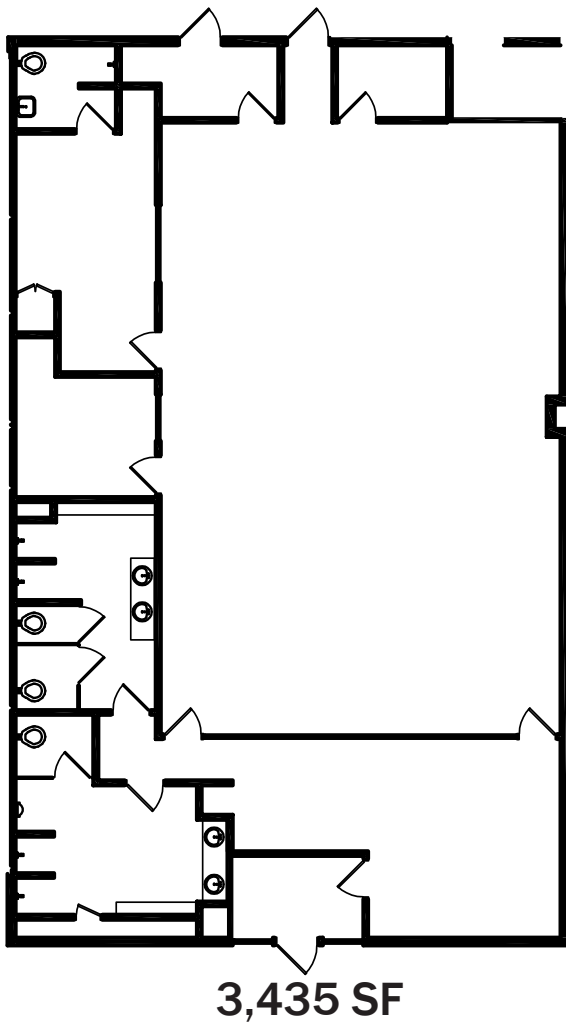
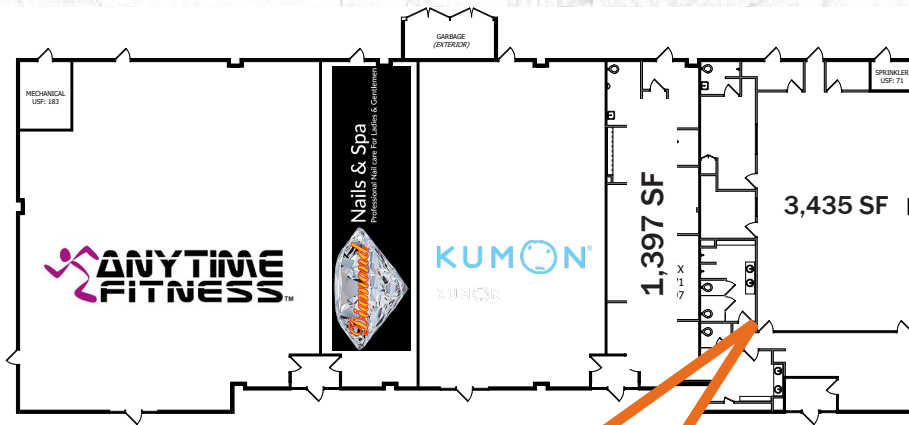
[leasing@hempelcompanies.com](mailto:leasing@hempelcompanies.com)



**HEMPEL**  
REAL ESTATE

**5145 County Road 101**  
Medina, MN

# Retail Space For Lease



**Brent Jacobson**  
Executive VP  
612-355-2609

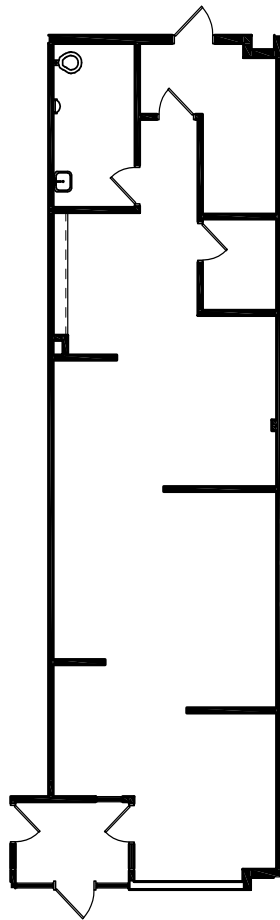
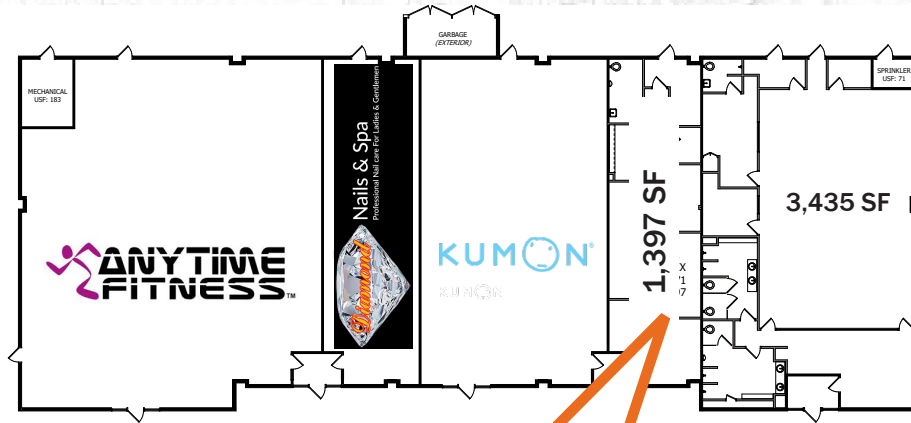
**Ben Krsnak**  
Executive VP  
612-355-2608

[leasing@hempelcompanies.com](mailto:leasing@hempelcompanies.com)



**5145 County Road 101**  
Medina, MN

# Retail Space For Lease



**1,397 SF**



**Brent Jacobson**

Executive VP  
612-355-2609

[leasing@hempelcompanies.com](mailto:leasing@hempelcompanies.com)

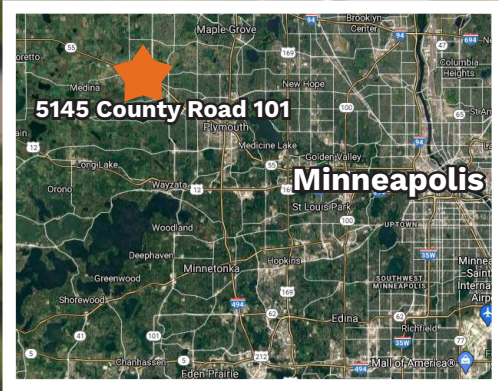
**Ben Krsnak**

Executive VP  
612-355-2608



**5145 County Road 101**  
Medina, MN

**Retail Space For Lease**



- 3,435 SF
- 1,397 SF
- KUMON
- Nails & Spa
- ANYTIME FITNESS



Clydesdale Trail

**Brent Jacobson** Executive VP  
612-355-2609  
[leasing@hempelcompanies.com](mailto:leasing@hempelcompanies.com)

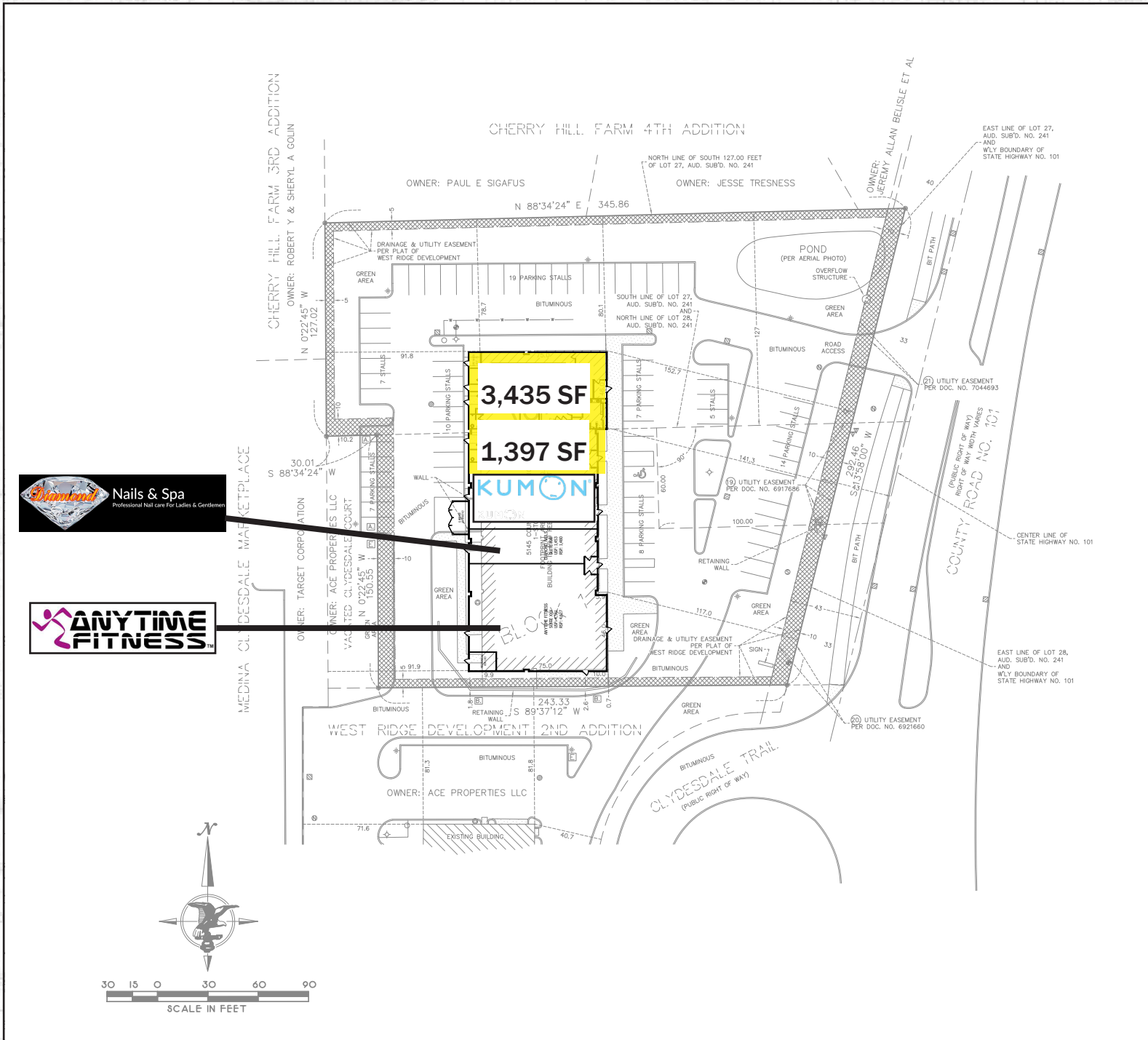
**Ben Krsnak** Executive VP  
612-355-2608



5145 County Road 101  
Medina, MN

Retail Space For Lease

# Site Plan of Westridge 1



**Brent Jacobson** Executive VP  
612-355-2609  
[leasing@hempelcompanies.com](mailto:leasing@hempelcompanies.com)

**Ben Krsnak** Executive VP  
612-355-2608



**5145 County Road 101**  
Medina, MN

**Retail Space For Lease**



**Brent Jacobson**

Executive VP  
612-355-2609

[leasing@hempelcompanies.com](mailto:leasing@hempelcompanies.com)

**Ben Krsnak**

Executive VP  
612-355-2608



**HEMPEL**  
REAL ESTATE