



**FLEX & OFFICE
SPACE AVAILABLE**

WILLOW LAKE TECH CENTER

400-444 STATE PARKWAY

SCHAUMBURG ILLINOIS



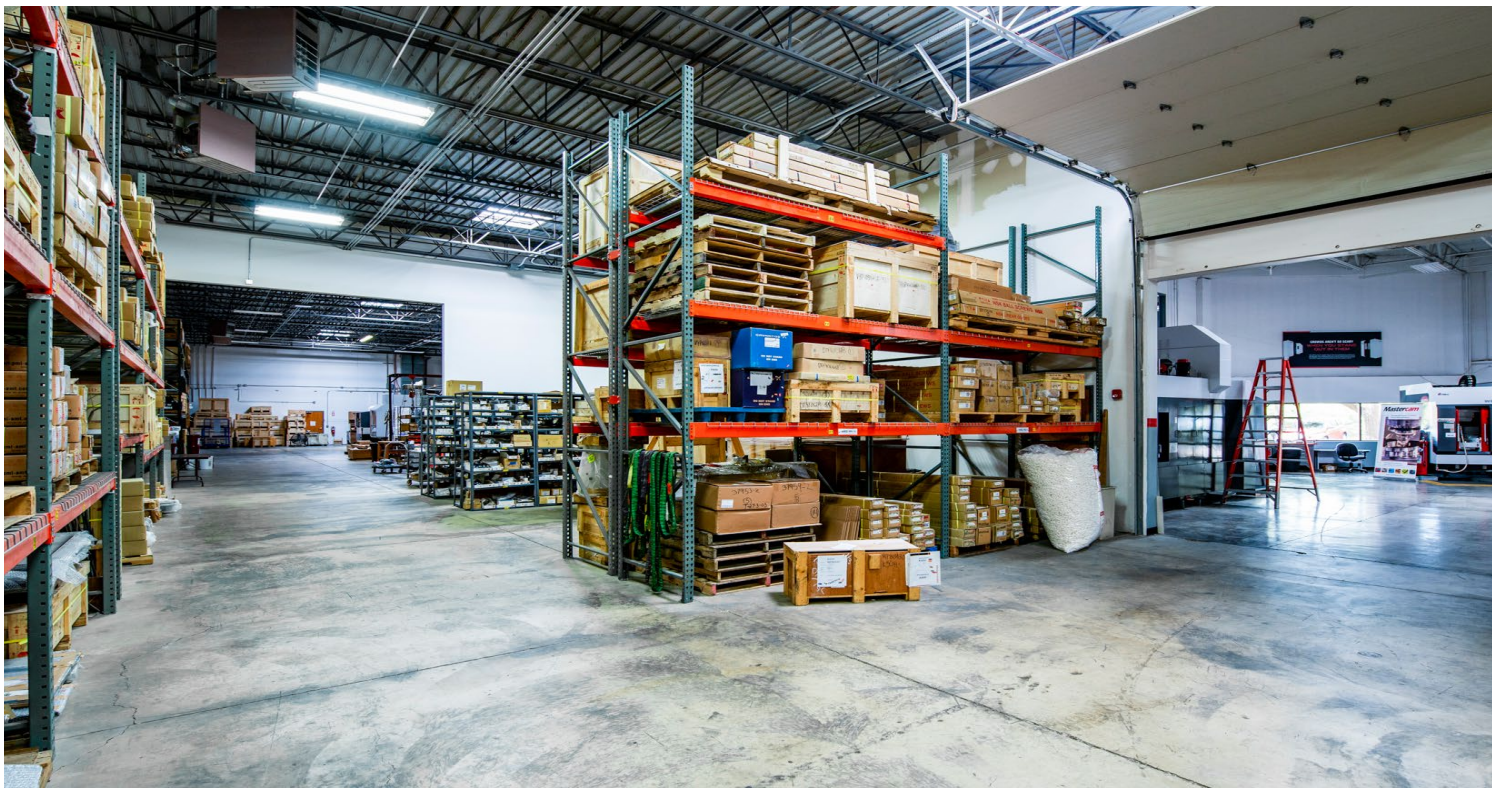
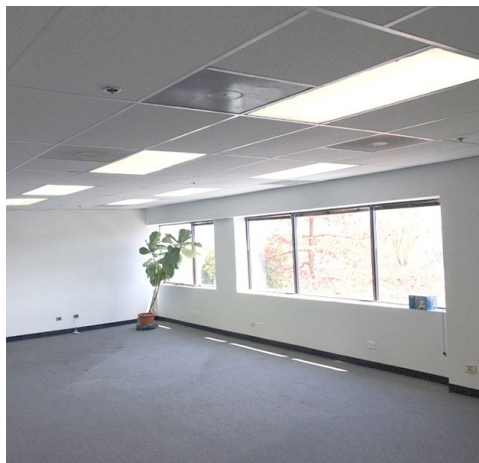
2-Story 105,007 SF, high image office / flex building

Office and Flex units available for Lease

Professionally owned and managed

Close proximity to high-end dining, entertainment and retail, including Woodfield Mall

400-444 STATE PARKWAY | SCHAUMBURG, IL



AVAILABLE FLEX & OFFICE SPACE

FLEX

SUITES 122-124

- * 8,115 SF
- * 6,550 SF Office
- * 1,565 SF Warehouse
- * 20' Clear
- * Access to 3 Shared Int Docks & Drive-in Door

SUITES 127-130

- * 12,366 SF
- * Divisible to 5,514 SF
- * 6,758 SF Office
- * 6,508 SF Warehouse
- * 20' Clear
- * Access to 3 Shared Int Docks

OFFICE

SUITE 130* 1,456 SF

SUITE 210 805 SF

SUITE 212 3,037 SF

SUITE 229 2,446 SF

SUITE 223 2,141 SF

SUITES 210-212 3,842 SF

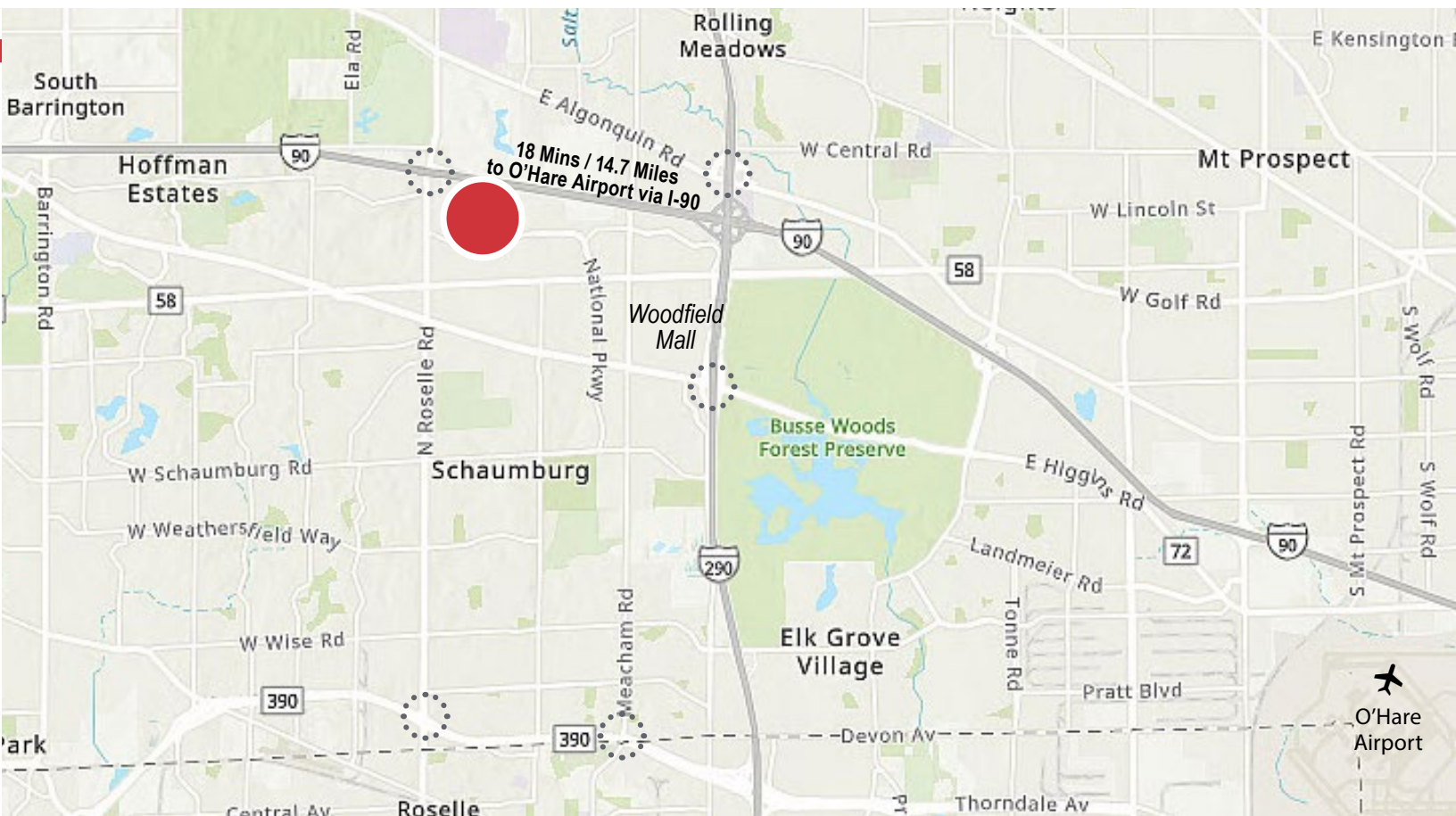
SUITES 212-213 4,562 SF

SUITES 210-213 5,367 SF

* Suite 130 is currently part of Flex Suites 127-130 but can be leased separately



400-444 STATE PARKWAY | SCHAUMBURG, IL



Contact

Terry Herlihy	630 693 0664	therlihy@hiffman.com
Jason Wurtz	630 693 0692	jwurtz@hiffman.com
Bennett Baker	630 317 0751	bbaker@hiffman.com

NAL Hiffman
Commercial Real Estate Services, Worldwide

One Oakbrook Terrace
Suite 400
Oakbrook Terrace, Illinois 60181
+1 630 932 1234

NO WARRANTY OR REPRESENTATION, EXPRESS OR IMPLIED, IS MADE AS TO THE ACCURACY OF THE INFORMATION CONTAINED HEREIN, AND THE SAME IS SUBMITTED SUBJECT TO ERRORS, OMISSIONS, CHANGE OF PRICE, RENTAL OR OTHER CONDITIONS, PRIOR SALE, LEASE OR FINANCING, OR WITHDRAWAL WITHOUT NOTICE, AND OF ANY SPECIAL LISTING CONDITIONS IMPOSED BY OUR PRINCIPALS NO WARRANTIES OR REPRESENTATIONS ARE MADE AS TO THE CONDITION OF THE PROPERTY OR ANY HAZARDS CONTAINED THEREIN ARE ANY TO BE IMPLIED.

hiffman.com