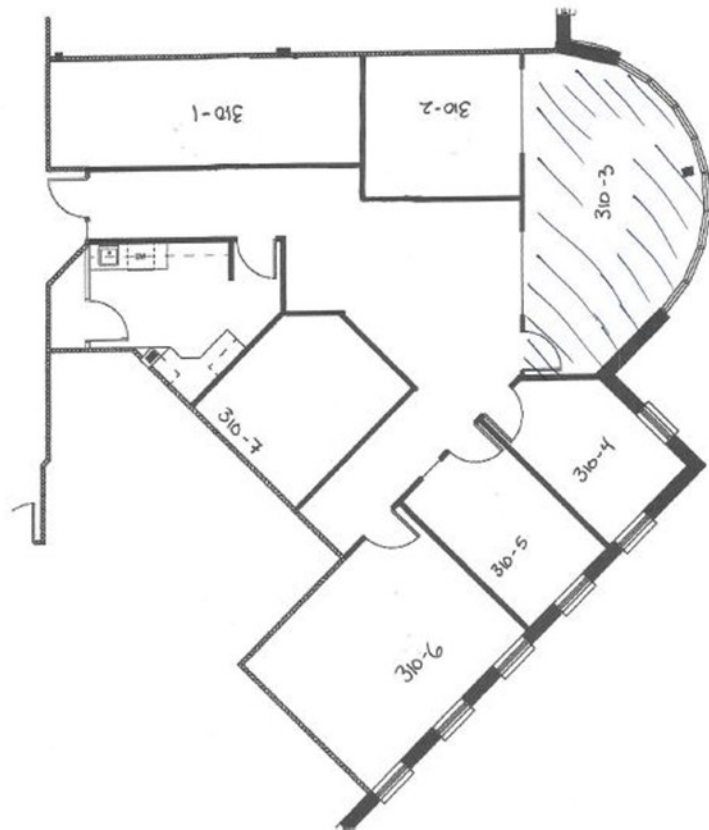


# OFFICE SPACE FOR LEASE



## **Suite 310-Executive Offices**

- Unique 3rd Level Office Space
- 2,247 Rentable Square Feet
- 3rd Level Overlooking Downtown and the PACE Center
- Located near 3rd Level Lobby and Seating Area in the Center of the Building
- Maximum Window Exposure with 4 Window Offices
- Large Open Reception/ Multi Desk Work Area
- In Suite Kitchen with Dishwasher
- Easy Access to 2nd and 3rd Level
- Conference/Media room– Free For Tenant Use
- Great Location on Mainstreet! Be a part of Downtown and Community Events.

***-AVAILABLE IMMEDIATELY-***

**LEASING & MANAGEMENT:**  
**PARKER-STATION.COM ▪ 303-945-0400**  
**ahasanovic@rio-realestate.com**