



FIRST
COMPANIES

PROFESSIONAL OFFICE/
MEDICAL SPACE
FOR LEASE

2060 E. Paris Avenue
Grand Rapids, MI 49546

AVAILABILITY

- Suite 200 - 17,997 SF
- Suite 250 - 13,828 SF

TERMS

- \$21.95 / SF
- Monthly Rate: Varies by Suite
- NNN
- CAM \$8.50

BUILDING AMENITIES

- **TWO STORY ATRIUM**
- **UNDERGROUND SPRINKLING**
- **HIGH EFFICIENCY UTILITIES**
- **HEATED SIDEWALKS**
- **PREMIER LOCATION**
- **HIGH VISIBILITY LOCATION**



FOR LEASE -
PROFESSIONAL/MEDICAL OFFICE SPACE

2060 E. Paris Avenue, Grand Rapids, MI 49546

OFFICE SPACE AVAILABLE

Medical / Professional office space in Class-A building at Heritage Pointe. High profile location on the corner of Burton Street and East Paris Avenue.

Suite 200 is 17,997 Sf of Medical Class A office space. Located on the second floor the space includes reception area, private offices, exam rooms, waiting room, procedure area, RX area and break area.

Suite 250 is professional office space on the second floor, has 13,828 Sf and includes includes reception area, private offices, break room and hub / conference room.

CONTACT US

AGENT: TY HALLOCK SIOR, CCIM

O: 616.698.5000 Ext. 149 **M:** 616.915.9800

ty.hallock@firstcompanies.com

AGENT: ZACH BAKER

O: 616.698.5000 Ext. 123 **M:** 616.916.8166

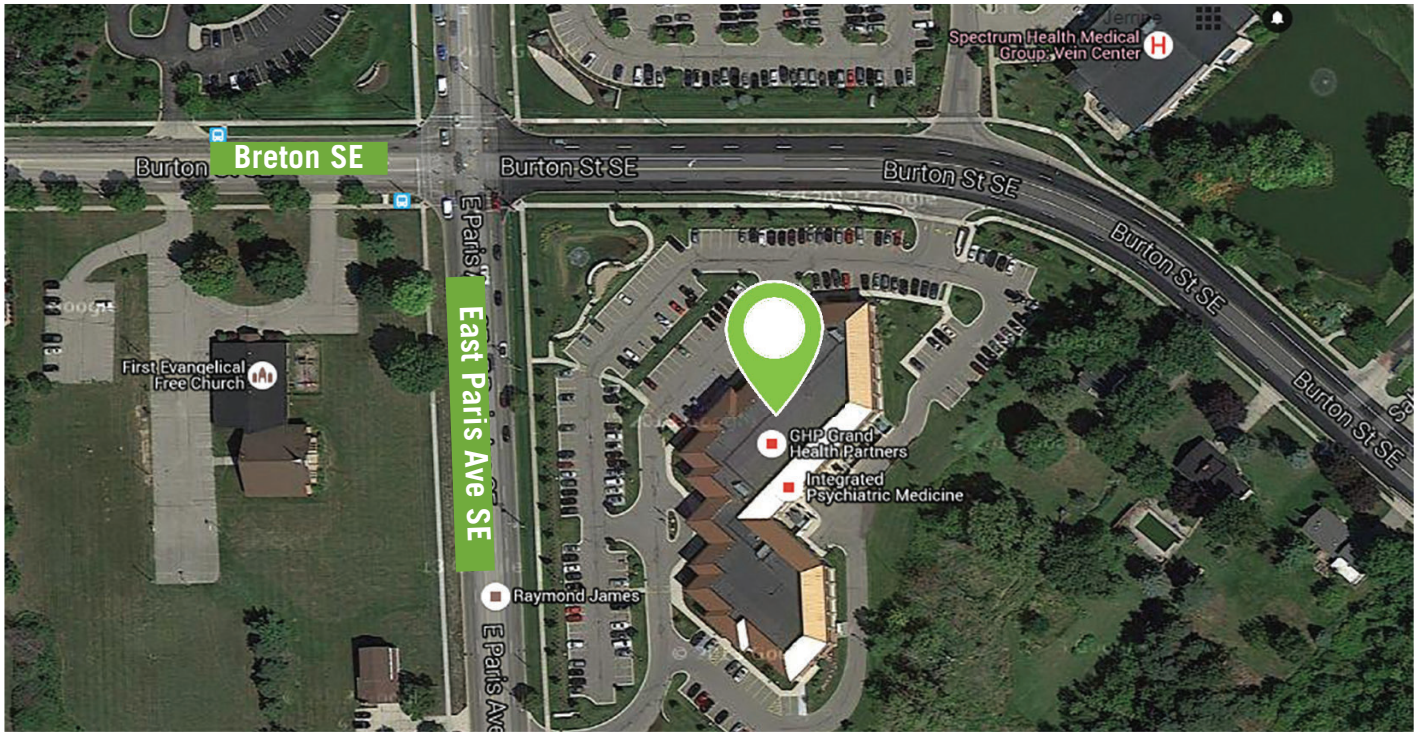
zach.baker@firstcompanies.com



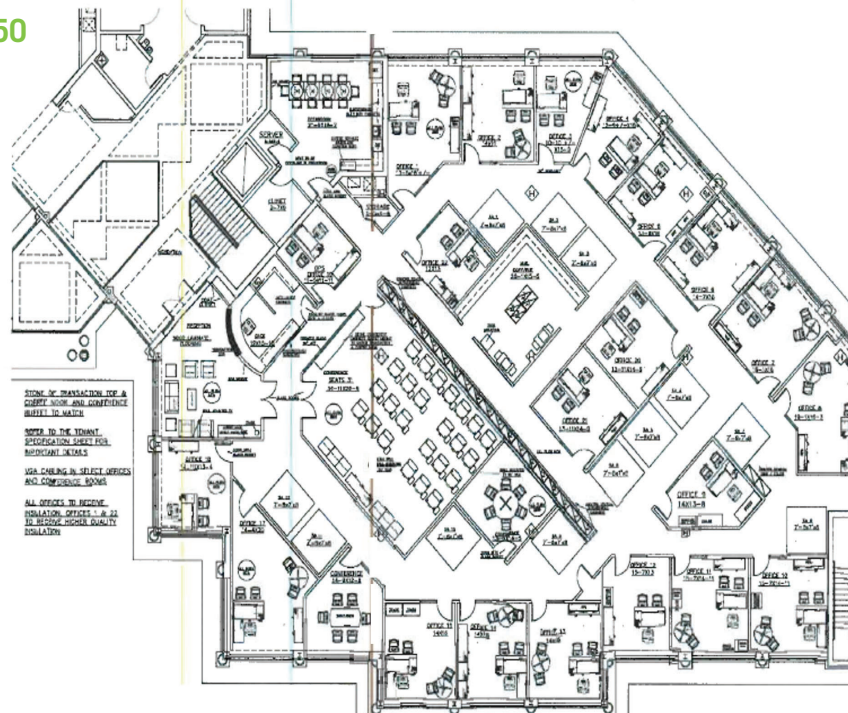
FIRST
COMPANIES

PROFESSIONAL OFFICE/
MEDICAL SPACE
FOR LEASE

SATELLITE VIEW



FLOOR PLAN - SUITE 250



CONTACT US

AGENT: TY HALLOCK SIOR, CCIM
O: 616.698.5000 Ext. 149 **M:** 616.915.9800
ty.hallock@firstcompanies.com

AGENT: ZACH BAKER
O: 616.698.5000 Ext. 123 **M:** 616.916.8166
zach.baker@firstcompanies.com

6355 E Paris Ave SE, Caledonia, MI 49316 | 616.698.5000 | FirstCompanies.com



FIRST
COMPANIES

INDUSTRIAL
FOR LEASE

PHOTOS - SUITE 250



CONTACT US

AGENT: TY HALLOCK SIOR, CCIM

O: 616.698.5000 Ext. 149 **M:** 616.915.9800

ty.hallock@firstcompanies.com

AGENT: ZACH BAKER

O: 616.698.5000 Ext. 123 **M:** 616.916.8166

zach.baker@firstcompanies.com

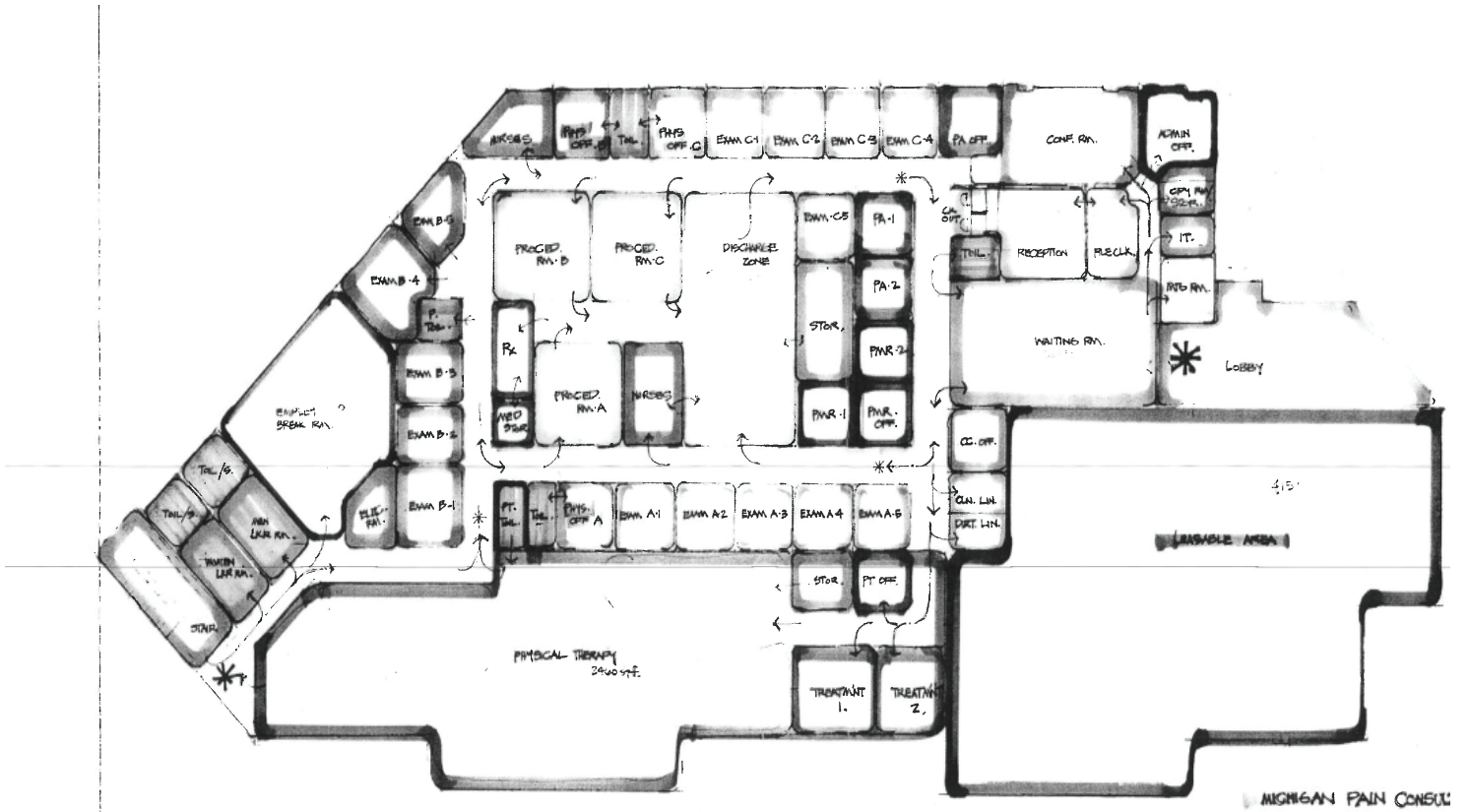
6355 E Paris Ave SE, Caledonia, MI 49316 | 616.698.5000 | FirstCompanies.com



FIRST
COMPANIES

PROFESSIONAL OFFICE/
MEDICAL SPACE
FOR LEASE

FLOOR PLAN - SUITE 200



CONTACT US

AGENT: TY HALLOCK SIOR, CCIM
O: 616.698.5000 Ext. 149 **M:** 616.915.9800
 ty.hallock@firstcompanies.com

AGENT: ZACH BAKER
O: 616.698.5000 Ext. 123 **M:** 616.916.8166
 zach.baker@firstcompanies.com



FIRST
COMPANIES

INDUSTRIAL
FOR LEASE

PHOTOS - SUITE 200



CONTACT US

AGENT: TY HALLOCK SIOR, CCIM

O: 616.698.5000 Ext. 149 **M:** 616.915.9800

ty.hallock@firstcompanies.com

AGENT: ZACH BAKER

O: 616.698.5000 Ext. 123 **M:** 616.916.8166

zach.baker@firstcompanies.com