



FOR LEASE

**MOJAVE RIDGE
INDUSTRIAL PARK**

1624 S Mojave Road
& 1601 Palm Street
Las Vegas, NV 89104

±13,862 SF – ±25,768 SF

Property Overview

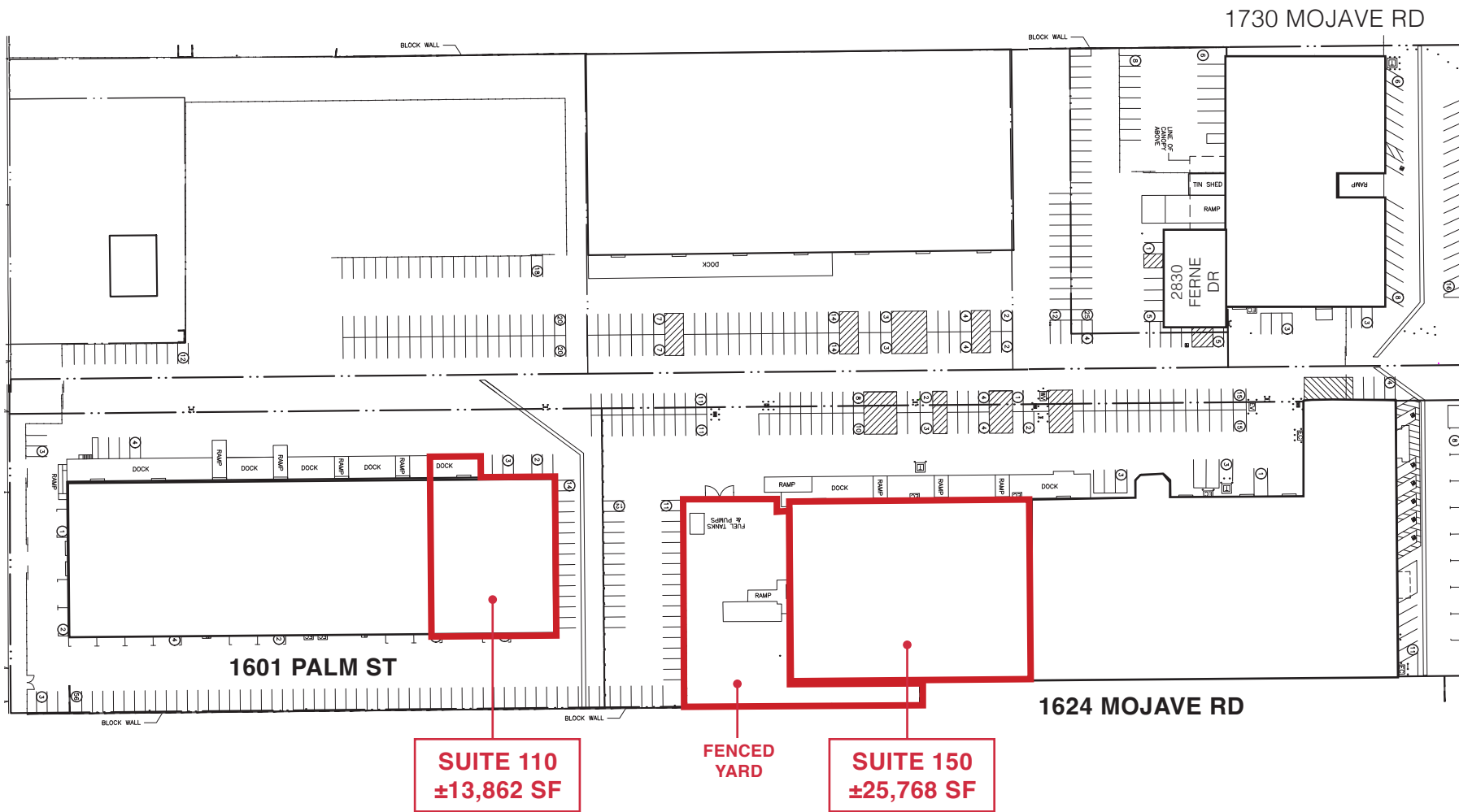
Mojave Ridge Industrial Park is a four-building industrial complex located in the highly accessible Central Submarket of Las Vegas, offering tenants a functional and well-maintained industrial environment. The property has recently undergone extensive capital improvements, including roof upgrades, parking lot resurfacing and striping, and new exterior paint, providing an updated and professional appearance.

Strategically positioned with immediate access to Downtown Las Vegas, US-95, and I-515, the property allows for efficient distribution and convenient connectivity throughout the Las Vegas Valley. The buildings feature durable masonry block construction, along with dock-high and grade-level loading, supporting a wide range of industrial and distribution uses.

- ±13,862 SF – 25,768 SF Available
- Dock-high and grade-level loading
- Secure fenced yard space available
- Excellent access to Downtown, US-95, and I-515
- Durable masonry block construction
- Centrally located within the Las Vegas industrial market



SITE PLAN



1601 Palm St | Las Vegas, NV 89104

LEASE RATE	\$1.05 - \$1.20 PSF NNN
NNN	\$0.19 PSF
AVAILABLE FOR LEASE	±13,862 SF
TOTAL ACRES	±2.74 AC
APN	162-01-602-005
ZONING	I-P (Industrial Park)

- TIs Available
- 100% wWarehouse
- Four (4) Grade Level Loading Doors
- Clear Height: 24' – 26'
- 1.64 Parking ratio with 33 striped parking spaces designated for this unit
- Fully gated industrial park



OR TEXT 23446 TO 39200

Message frequency will vary. Message and data rates may apply. Reply HELP for help or STOP to cancel.

[ARTI Terms of Service](#) | [ARTI Privacy Statement](#)



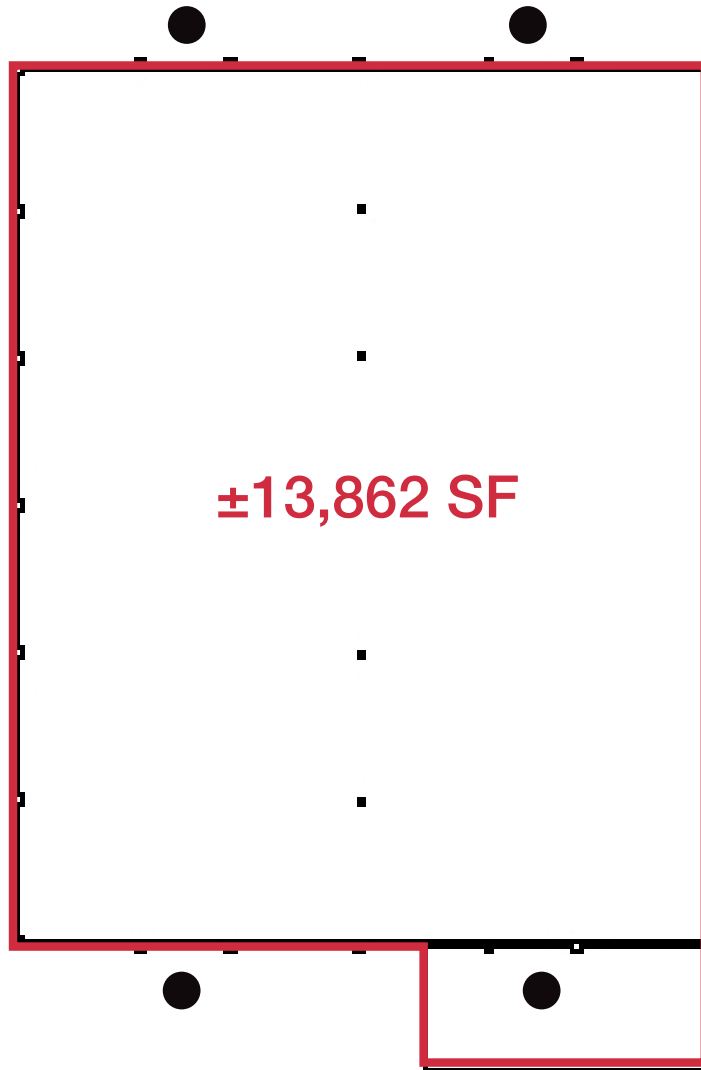
SUMMARY



PHOTOS



FLOOR PLAN



Property Details

Total SF	±13,862
Grade Door	Four (4)
Power	200 Amps, Three- Phase Power
Lease Rates	\$1.05-\$1.20/SF NNN
CAM	\$0.19
Total Monthly	\$17,188.88 - \$19,268.18

- GRADE LEVEL LOADING DOORS
- ▲ DOCK HIGH LOADING DOORS
- RAMPED ROLL UP DOORS

1624 S Mojave Rd. Suite 150
Las Vegas, NV 89104

TOTAL SF AVAILABLE **±25,768 SF**

TOTAL YARD SF **±18,470 SF**

YEAR BUILT/RENOVATED **1965/2006**

ZONING **I-P (Industrial Park)**

- 25,768 Total SF with ±18,470 SF of secured yard space
- ±1,498 SF of Two-Story office space
- ±24,270 SF of Warehouse space
- Three (3) Grade Level Loading Doors
- Located in the Central Las Vegas submarket in close proximity to Downtown Las Vegas, the Las Vegas Convention Center and near the I-515



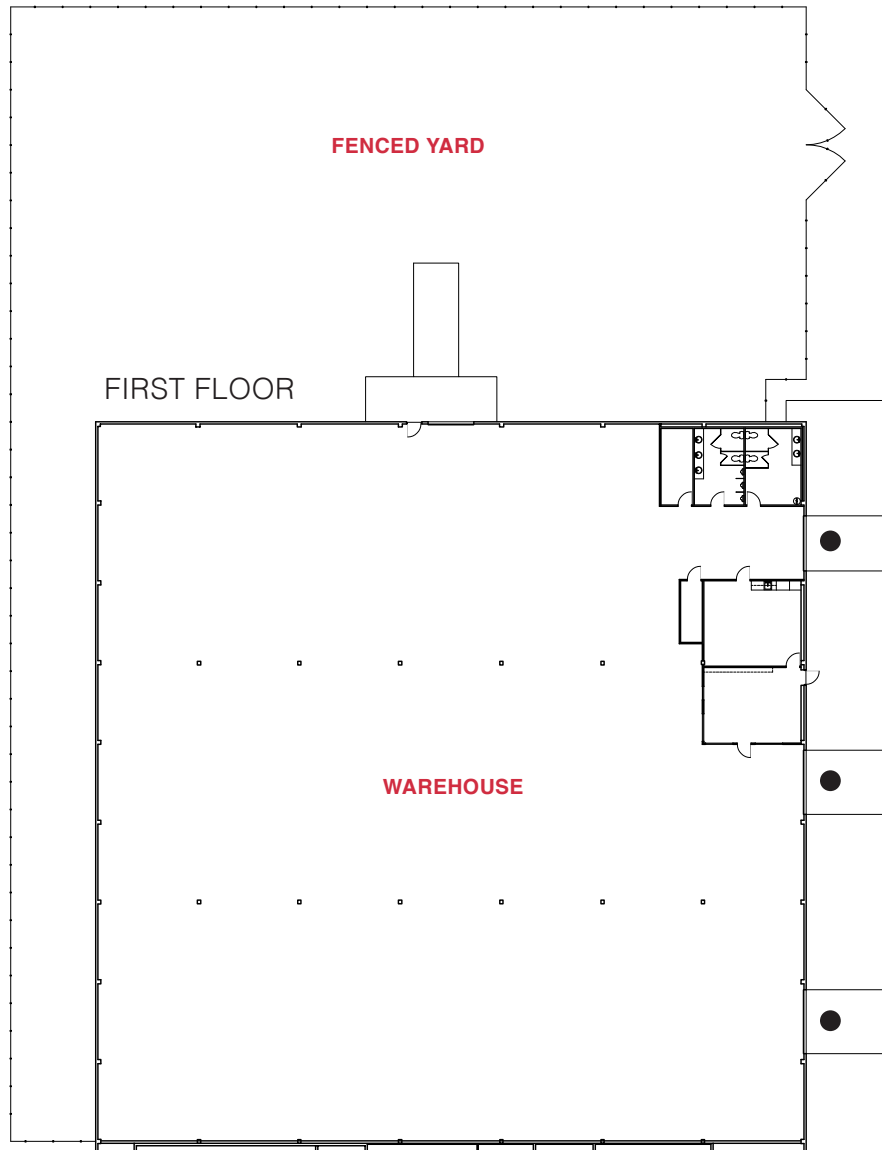
OR TEXT 23498 TO 39200

Message frequency will vary. Message and data rates may apply. Reply HELP for help or STOP to cancel.

[ARTI Terms of Service](#) | [ARTI Privacy Statement](#)

SUMMARY

FLOOR PLAN

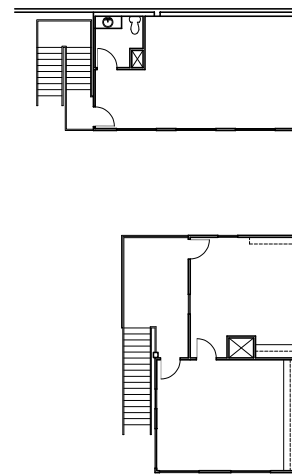


PROPERTY DETAILS

Address	1624 S Mojave Road Suite 150
Total SF	±25,768 SF
Two-Story Office SF	±1,498 SF
Warehouse SF	±24,270 SF
Yard Space SF	±18,470 SF
Lease Rate	\$1.20 PSF NNN
CAM	\$0.19 PSF
Total Monthly	\$35,817.52
Grade Level Loading	Three (3)
Clear Height	TBD
Power	±1,200 Amps, 3-Phase Power
Availability	TBD
Additional Features	Two-story office space with private yard space

● GRADE LEVEL DOOR

SECOND FLOOR





AREA MAP



**DOWNTOWN
LAS VEGAS**



LAS VEGAS BLVD

CHARLESTON BLVD

SITE

SAHARA AVE

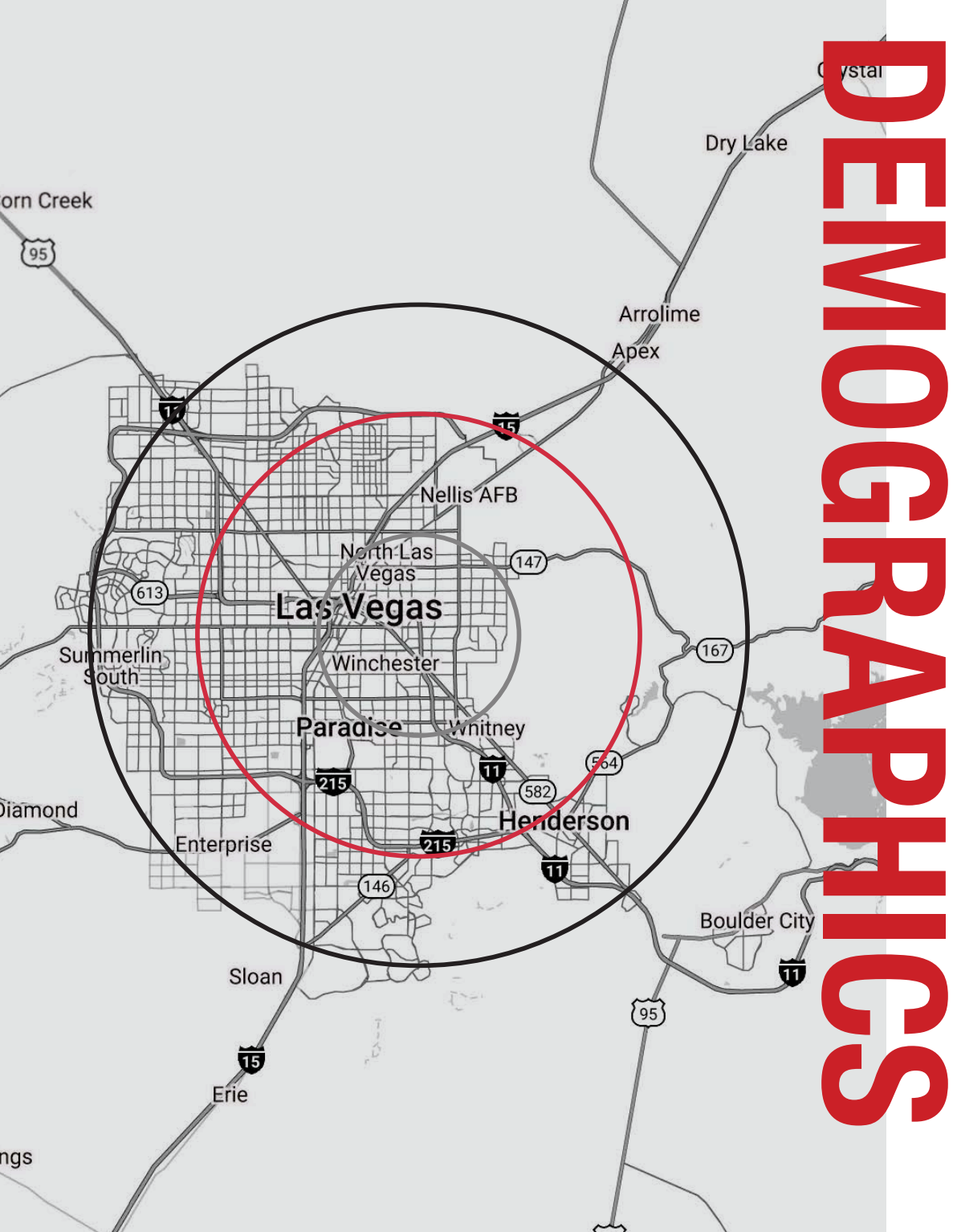
FREMONT ST

**THE
LAS VEGAS
STRIP**

**LAS VEGAS
COUNTRY
CLUB**

MARYLAND PKWY

- Shops/Tenants
- Schools
- Public Parks
- Govt. Buildings
- Airport



DEMOGRAPHICS

POPULATION	1-mile	3-mile	5-mile
2024 Population	19,475	162,892	397,179
HOUSEHOLDS	1-mile	3-mile	5-mile
2024 Households	8,164	64,281	151,876
INCOME	1-mile	3-mile	5-mile
2024 Average HH Income	\$98,124	\$102,101	\$102,968

Traffic Counts

STREET	AADT
N Buffalo Dr	25,500
Cheyenne Ave	39,063

Cities Nearby

Los Angeles, California	273 miles
Phoenix, Arizona	302 miles
Salt Lake City, Utah	418 miles
San Diego, California	334 miles
Denver, Colorado	75 miles
San Antonio, Texas	1,280 miles

TERMS & CONDITIONS

Terms and Conditions

This offering, including any related digital marketing, contains selected information pertaining to the Property and does not purport to be a representation of the state of the Property, to be all-inclusive, or to contain all or part of the information which interested parties may require to evaluate a purchase or lease of real property.

Financial Information

Any and all financial projections and information are provided for general reference purposes only and have been gathered from sources deemed reliable. Certain assumptions have been made relating to the general economy, market conditions, competition and other factors beyond the control of seller and NAI Vegas. Therefore, all projections, assumptions and other information provided and made herein are subject to material variation.

Summary Documents

Additionally, all references to acreage, square feet, and other measurements are approximations. Any demographics, geographic information systems(GIS), maps, photography, zoning, site plan, survey, engineering, architectural drawings, and any other information are without assurance of their accuracy, time sensitivity, completeness, or status of approval. Documents presented may be preliminary, have no assurance of being “as built”, and may not reflect actual property boundaries or improvements. Additional information and an opportunity to inspect the Property can be made available to qualified parties. In this Memorandum, certain documents are described in summary form. These summaries do not purport to be complete nor necessarily accurate descriptions of the full documents referenced herein. Interested parties are expected to review and confirm all such summaries and other documents of whatever nature independently and not rely on the contents of this Memorandum in any manner.

Non-Warranty

Neither the seller or NAI Excel, nor any of their respective directors, officers, Affiliates or representatives make any representation or warranty, expressed or implied, as to the accuracy or completeness of this Offering Memorandum or any of its contents, as to the financial performance of the property, or as to the condition of the Property, malfunctions or mechanical defects on the Property or to any improvements thereon, including but not limited to the material, workmanship or mechanical components of the structures, foundations, roof, heating, plumbing, electrical or sewage system, drainage or moisture conditions, air conditioning, or damage by the presence of pests, mold or other organisms, environmental condition, soils conditions, the zoning of the Property, the suitability of the Property for Interested parties intended use or purpose, or for any other use or purpose.

No Obligation

No legal commitment or obligation shall arise by reason of your receipt of this Memorandum or use of its contents; Interested Parties are to rely solely on its investigations and inspections of the Property in evaluating a possible purchase or lease of the real property. The seller expressly reserves the right, at its sole discretion, to reject any or all offers to purchase or lease the Property, and/or to terminate discussions with any entity at any time, with or without notice, which may arise as a result of review of this Memorandum.

Confidentiality

By receipt of this Memorandum, you agree that this Memorandum and its contents are confidential in nature, that you will hold and treat such in the strictest confidence and that you will not disclose this Memorandum, or any of its contents, to any other entity without the prior written authorization of the seller or NAI Vegas. If after reviewing this Memorandum, you have no further interest in purchasing or leasing the Property, please delete or return this Memorandum to NAI Excel.



WHY NAI

Our professionals leverage decades of experience, industry-leading technology, and a leading global network to help you excel in your real estate goals.

325+
OFFICES

1.1 BIL
SF MANAGED

5,800+
PROFESSIONALS

TOP 6
2024 LIPSEY RANKING

 LEARN MORE AT
naixel.com

NAI Excel
COMMERCIAL REAL ESTATE SERVICES, WORLDWIDE

6064 South Durango Drive,
Las Vegas, NV 89113
702.383.3383 | naixel.com

Erik Sexton, SIOR
LIC#S.0067183
702.768.9922
erik.sexton@naixel.com

Justen Kruse
LIC#S.0196453.LLC
725.254.7516
jkruse@naixel.com



This offering, including any related digital marketing, contains selected information pertaining to the Property and does not purport to be a representation of the state of the Property, to be all-inclusive, or to contain all or part of the information which interested parties may require to evaluate a purchase or lease of real property. Neither the seller or NAI Excel, nor any of their respective directors, officers, Affiliates or representatives make any representation or warranty, expressed or implied, as to the accuracy or completeness of this Offering Memorandum or any of its contents, as to the financial performance of the property, or as to the condition of the Property, malfunctions or mechanical defects on the Property or to any improvements thereon, including but not limited to the material, workmanship or mechanical components of the structures, foundations, roof, heating, plumbing, electrical or sewage system, drainage or moisture conditions, air conditioning, or damage by the presence of pests, mold or other organisms, environmental condition, soils conditions, the zoning of the Property, the suitability of the Property for interested parties intended use or purpose, or for any other use or purpose. ARTI Terms of Service | <https://brokerstechnology.com/terms-of-use/> ARTI Privacy Policy | <https://brokerstechnology.com/privacy-policy/>