



309 MAIN STREET

MADISON, NEW JERSEY

1,000 SF FOR LEASE

SHANE WIERKS
 swierks@jefferyrealty.com
 C: 908.581.7781
 O: 908.668.9600



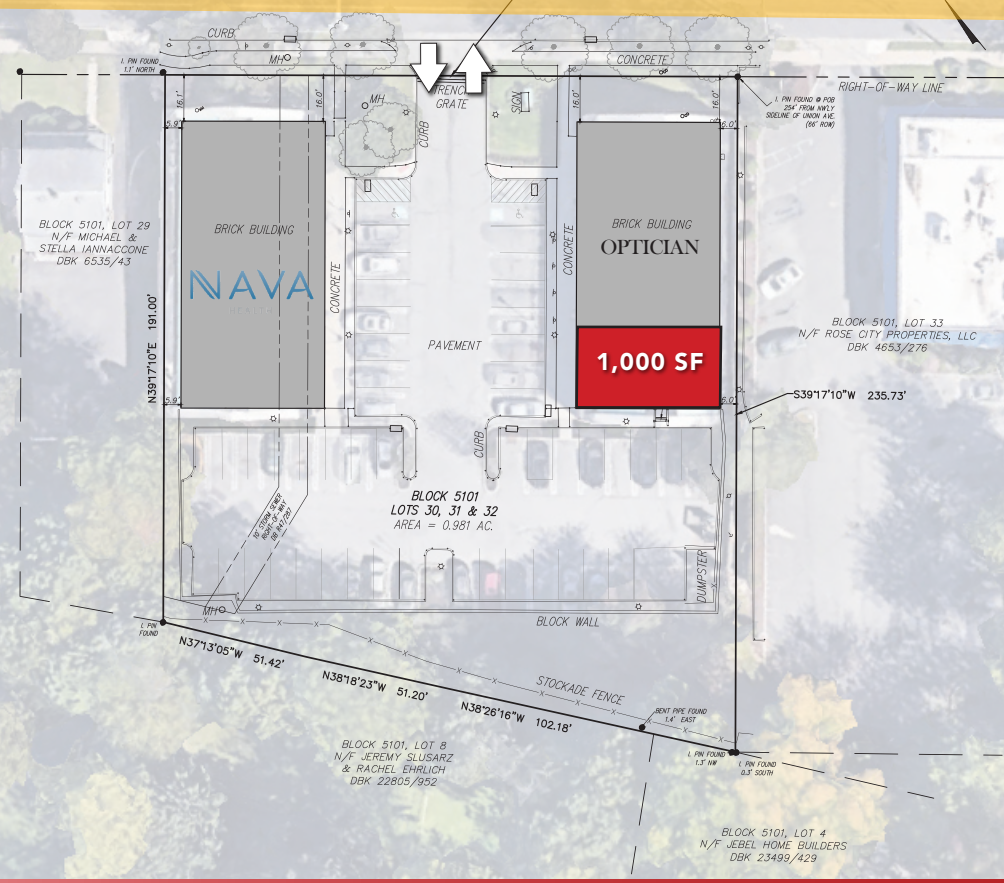
JEFFERY REALTY
 Retail Specialist

52 Millburn Ave. • Springfield, NJ 07081 • T: 908.668.9600 • F: 908.668.5225 • www.JefferyRealty.com
 All information is from sources deemed reliable and is submitted subject to errors, omissions, change of price, terms, prior sales and withdrawals.



← WEST
EAST →

MAIN STREET 21,544 VPD
(66' RIGHT OF WAY)



309 MAIN ST.

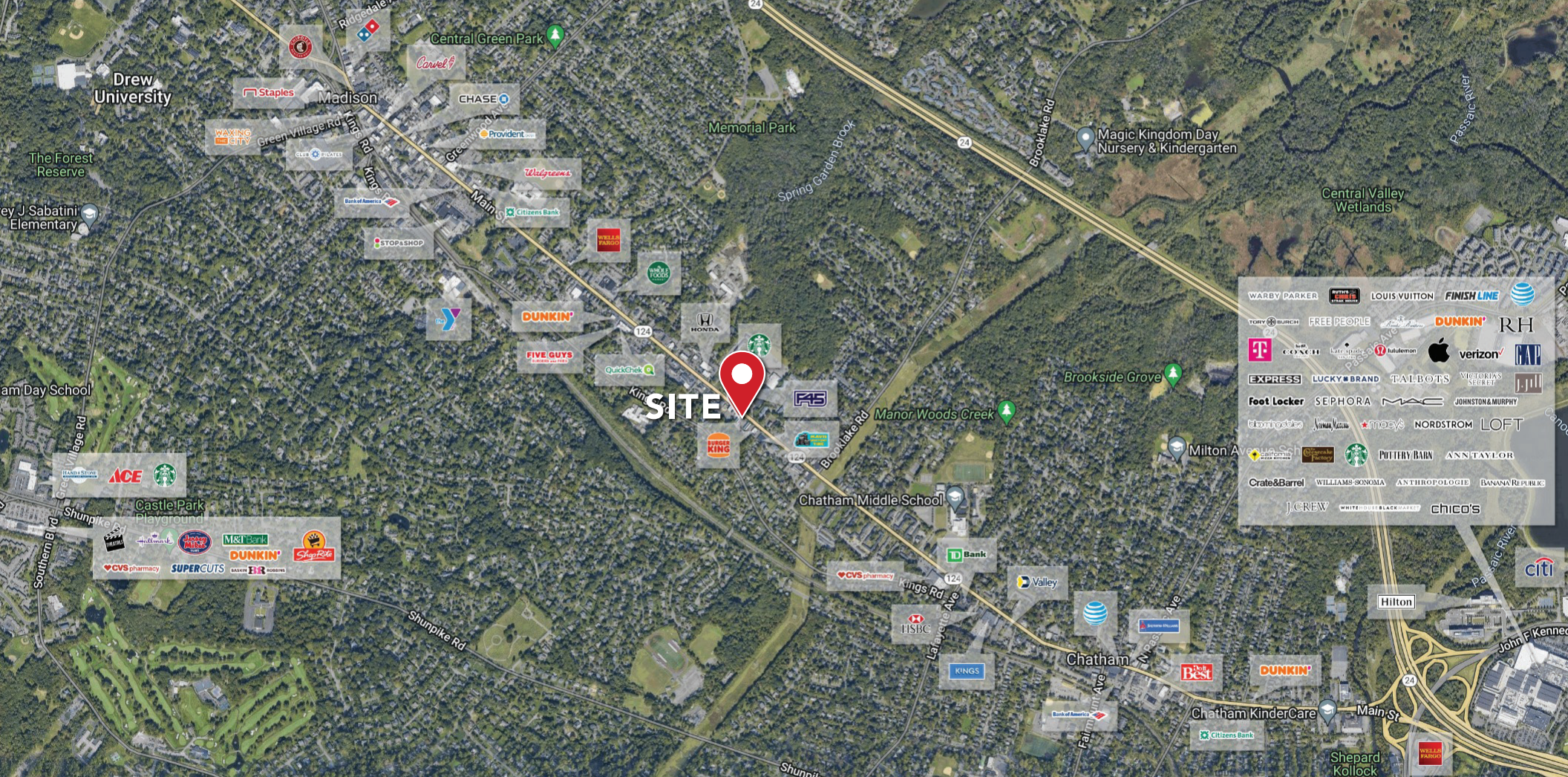
MADISON, NEW JERSEY

SITE INFORMATION

GLA: 10,000 SF
AVAILABLE: 1,000 SF
RENT: CALL FOR QUOTE
NNN: \$12.00 PSF

FRONTAGE: 50' ON MAIN ST.
PARKING: 47 SPACES
TRAFFIC: 21,544 VPD ON MAIN


NOTES: DREW UNIVERSITY, FAIRLEIGH DICKINSON UNIVERSITY & COLLEGE OF ST. ELIZABETH ARE ALL LOCATED WITHIN CLOSE PROXIMITY WITH OVER 16,267 STUDENTS & FACULTY.



309 MAIN ST. MADISON, NEW JERSEY

MARKET AERIAL



 DEMOGRAPHICS	1 MILE	3 MILE	5 MILE
Total Population	12,480	65,090	151,498
Average HHI	\$238,505	\$228,329	\$235,548
Households	4,546	23,465	54,438