

FOR SALE

THE ROOSEVELT BUILDING



15 E. WASHINGTON STREET
COLDWATER, MI 49036

PROPERTY HIGHLIGHTS:

- 45,271 SF Multi-Family, Senior Housing, Self-Storage Conversion Opportunity
- Built in 1923, remodeled in 2001
- Sale Price \$3,000,000 (\$66.27 PSF)
- 130 Parking Spaces
- 158 Parking Spaces Adjacent in Free Municipal Lot
- Walkable to Downtown Coldwater

The information provided herein along with any attachment(s) was obtained from sources believed to be reliable, however, Friedman Real Estate makes no guarantees, warranties, or representations as to the completeness or accuracy of such information and legal counsel is advised. All information provided is subject to verification and no liability for reliance on such information or errors or omissions is assumed. The presentation of this property is submitted subject to errors, omissions, change of price or conditions, prior sale or lease, or withdrawal without notice. Copyright © 2025 Friedman Real Estate. All rights reserved.

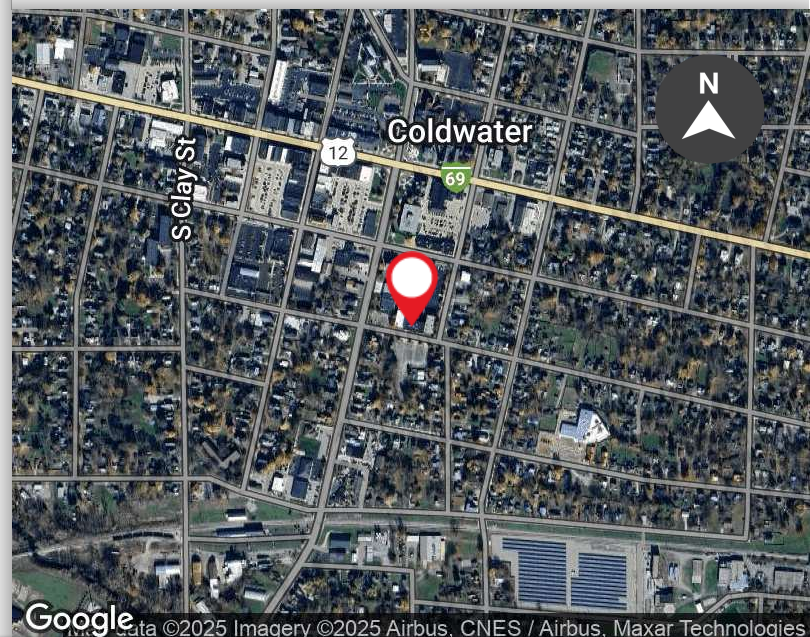
FOR MORE INFORMATION PLEASE CONTACT:



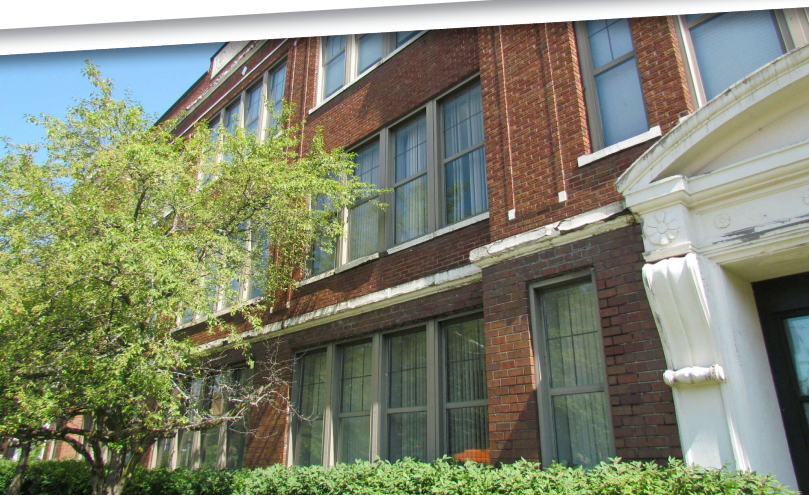
BRUCE A. MORRISON
bruce.morrison@freg.com

586.243.4260

eCODE 141



THE ROOSEVELT BUILDING EXTERIOR **PHOTOS**

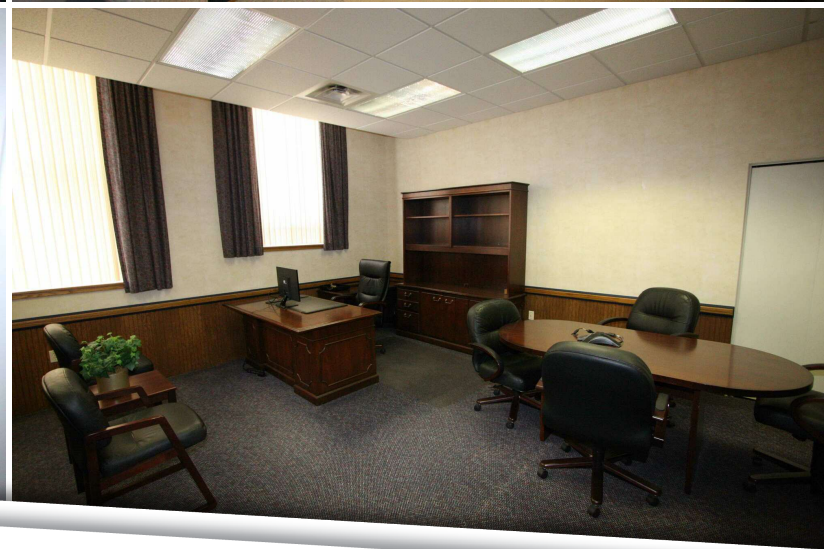


FOR MORE INFORMATION **PLEASE CONTACT:**



BRUCE A. MORRISON
bruce.morrison@freg.com

THE ROOSEVELT BUILDING INTERIOR PHOTOS



FOR MORE INFORMATION **PLEASE CONTACT:**



BRUCE A. MORRISON
bruce.morrison@freg.com

THE ROOSEVELT BUILDING PARCEL **OUTLINE**



FOR MORE INFORMATION **PLEASE CONTACT:**



BRUCE A. MORRISON
bruce.morrison@freg.com