

# BUILD-TO-SUIT FOR LEASE

**500,000 SF Class A Warehouse/Distribution**



\*CONCEPTUAL PLAN

## MOBILE HIGHWAY LOGISTICS CENTER

6080 Mobile Highway | Montgomery, AL



# PROPERTY HIGHLIGHTS

Mobile Highway Logistics Center is a proposed 650,000 SF, Class A industrial development designed to serve the Southeast. The project features two modern warehouse and distribution buildings with convenient access to I-65 via Exits 164 and 167 in Montgomery, Alabama.

## 50,000 SF to 500,000 SF Available

Concrete tilt wall construction

32' to 40' clear

ESFR sprinkler system

150' truck courts

Trailer parking

60' speed bays

LED lighting at 30' AFL

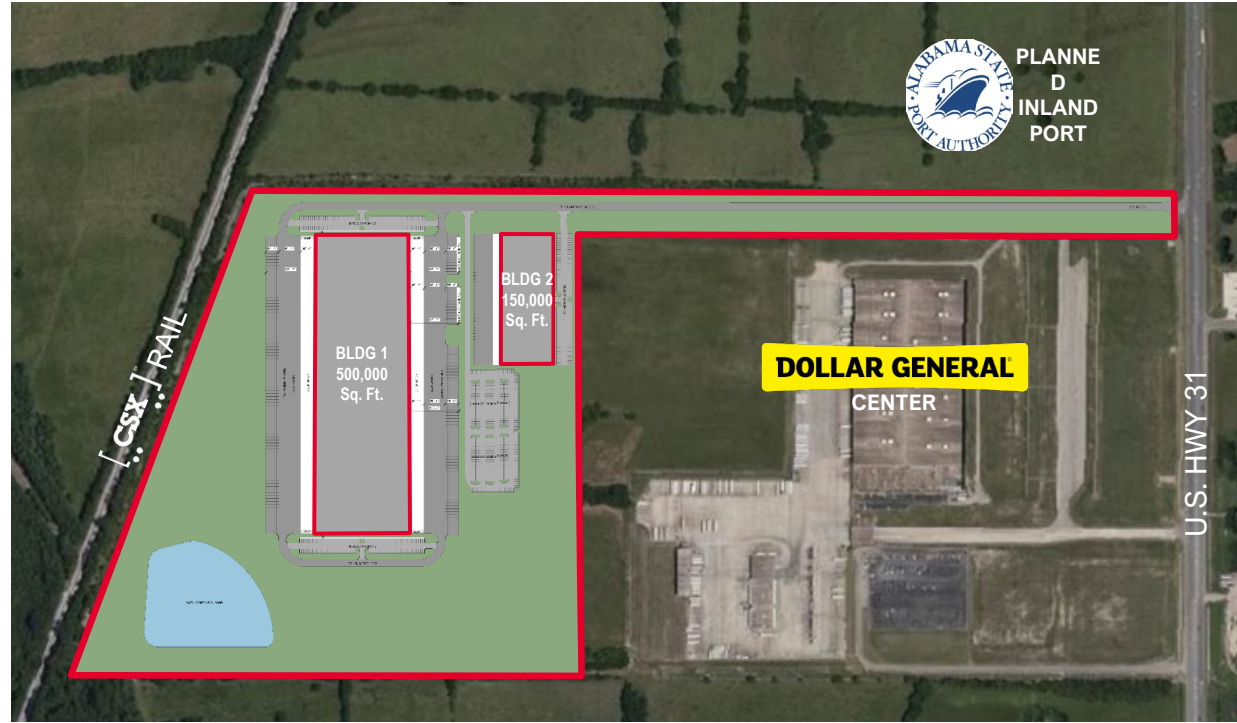
Build-to-suit office areas

Painted warehouse interior walls

Abundant car parking

Adjacent to planned Port Mobile inland port

Incentive available



## BUILDING 1

★ 150,000 SF to 500,000 SF

- Up to 40' clear
- 60' speed bays
- Build-to-suit office areas
- Cross dock loading capabilities
- Trailer parking availability
- ESFR sprinkler system

## BUILDING 2

★ 50,000 SF to 150,000 SF

- 32' clear
- Build-to-suit office areas
- Rear loaded building
- Double bank front parking area
- Trailer parking possible
- ESFR sprinkler system



Up to 500,000 SF



3 Miles to Hyundai Plant



Planned Intermodal Transfer Facility



Heart of the Auto Industry



2 Miles from I-65



CSX Rail Access Possible

# AERIAL MAP



## CONTACT INFORMATION

### MARK BYERS, SIOR

President | Partner  
mbyers@egsinc.com  
+1 205 314 5522

### DEBORAH MCGILL SMITH, SIOR

Executive Vice President | Partner  
dsmith@egsinc.com  
+1 205 314 5534

2100 3rd Avenue North, Suite 700  
Birmingham, AL 35203  
phone: +1 205 939 4440  
egsinc.com

*Independently Owned and Operated / A Member of the Cushman & Wakefield Alliance*

Cushman & Wakefield Copyright 2026. No warranty or representation, express or implied, is made to the accuracy or completeness of the information contained herein, and same is submitted subject to errors, omissions, change of price, rental or other conditions, withdrawal without notice, and to any special listing conditions imposed by the property owner(s). As applicable, we make no representation as to the condition of the property (or properties) in question.

