

425 N NEW BALLAS RD  
CREVE COEUR, MISSOURI

FOR LEASE



SAVOY  
PROPERTIES

LLCG  
Capital Management





425 N NEW BALLAS RD

PHOTOS + DETAILS

BEN FRIEDMAN

314.283.9235 (MOBILE)

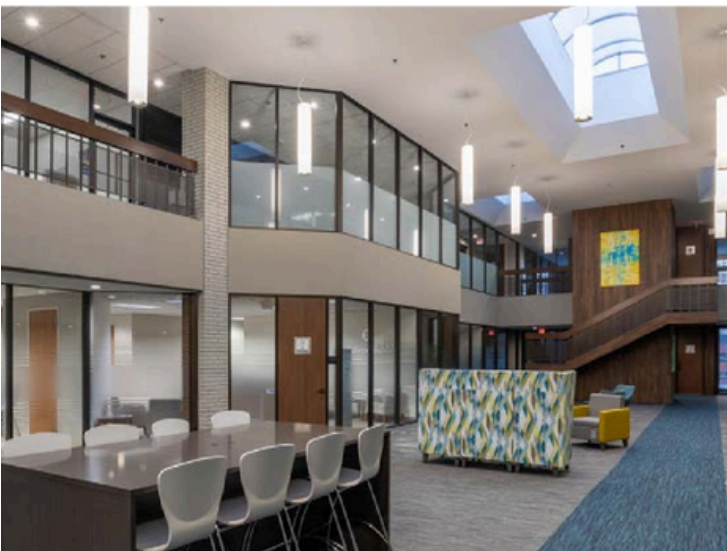
BFriedman@SavoyProperties.com

NICK HARTIG

314.408.7400 (OFFICE)

314.805.9779 (MOBILE)

Nick@LCGCap.com



MEDICAL OFFICE & GENERAL OFFICE  
SPACE FOR LEASE: \$24.00 - 27.00  
PSF FULL SERVICE

UP TO 4,910 SF AVAILABLE

FULL EXTERIOR & INTERIOR  
RENOVATION COMPLETED TO  
CREATE A CLASS A IMAGE

LARGE COMMON ATRIUM FOR  
EVENTS AND MEETING SPACE

AMPLE SURFACE PARKING  
4 PER 1,000 SF

EASY ACCESS TO I-270 & OLIVE BLVD

WITHIN 3 MILES OF THREE MAJOR  
MEDICAL FACILITIES: MERCY,  
MISSOURI BAPTIST, BARNES-JEWISH  
WEST COUNTY

AVAILABILITY:

SUITE 103 - 4,910 SF

SUITE 206 - 4,400 SF

SUITE 295 - 1,000 - 3,859 SF



SAVOY  
PROPERTIES

[www.LCGCap.com](http://www.LCGCap.com)

The information in this flyer has been obtained from sources believed reliable. While we do not doubt its accuracy, we have not verified it and make no guarantee about it. It is your responsibility to independently confirm its accuracy and completeness. Any projections, opinions, assumptions or estimates used are for example only and do not represent the current or future performance of the property. The value of this transaction to you depends on tax and other factors which should be evaluated by your tax, financial and legal advisors. You and your advisors should conduct a careful, independent investigation of the property to determine to your satisfaction the suitability of the property for your need.



425 N NEW BALLAS RD

## PHOTOS + DETAILS

BEN FRIEDMAN

314.283.9235 (MOBILE)

BFriedman@SavoyProperties.com

NICK HARTIG

314.408.7400 (OFFICE)

314.805.9779 (MOBILE)

Nick@LCGCap.com

