

Ground Lease Retail Pad

1985 Campbell Drive, Homestead, FL 33033



RESOURCE REAL ESTATE GROUP
COMMERCIAL BROKERAGE | MANAGEMENT AND LEASING

MARCELA VARGAS

BROKER ASSOCIATE

305.717.3535 - 954.937.4660

Marcela@remsgroupinc.com

Site plan



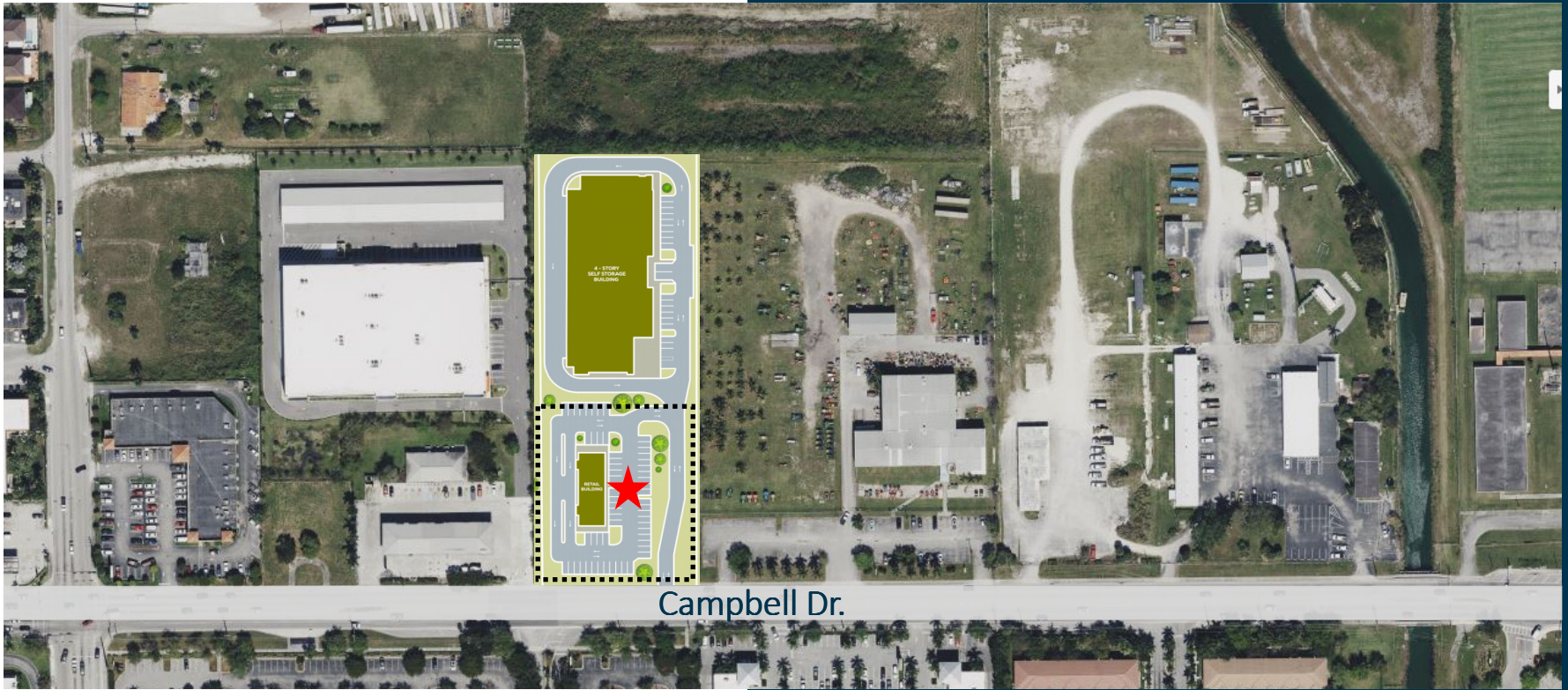
Overview

- ◇ **Address:** 1985 Campbell Drive, Homestead, FL 33033
- ◇ **Lot Size:** +/- 1 Acre
- ◇ **Retail Building Size:** +/- 4,500 SF
- ◇ **Zoning:** Commercial
- ◇ Retail site located on Campbell Dr. 0.5 miles from the Florida's Turnpike.

Highlights

- ◇ High visibility primary east-west road in Homestead with access to the Florida's Turnpike.
- ◇ High traffic count over 26,700 cars per day along Campbell Drive.
- ◇ A great population within a 5-mile radius of 182,092 people.
- ◇ Growing density with more than 18 residential developments within a 5-mile radius.
- ◇ Located near national tenants including Lowes, Walmart, Target, Ross, Publix and more.

Ground Lease Retail Pad



2022 SUMMARY	1 Mile	3 Miles	5 Miles
POPULATION	20,329	131,383	182,092
HOUSEHOLDS	6,241	40,159	54,876
FAMILIES	4,599	30,482	42,395
AVERAGE HOUSEHOLD SIZE	3,25	3,26	3,28
OWNER OCCUPIED HOUSING UNITS	2,412	19,173	26,386
RENTER OCCUPIED HOUSING UNITS	3,830	20,986	28,490
MEDIAN AGE	31,2	31,7	31,8
AVERAGE HOUSEHOLD INCOME	\$61,402	\$75,192	\$72,709

2027 ESTIMATE	1 Mile	3 Miles	5 Miles
POPULATION	20,253	131,223	183,777
HOUSEHOLDS	6,202	40,176	55,515
FAMILIES	4,582	30,537	42,974
AVERAGE HOUSEHOLD SIZE	3,26	3,25	3,27
OWNER OCCUPIED HOUSING UNITS	2,433	19,476	27,053
RENTER OCCUPIED HOUSING UNITS	3,769	20,700	28,462
MEDIAN AGE	31,7	31,9	32,3
AVERAGE HOUSEHOLD INCOME	\$73,732	\$91,294	\$88,086

