



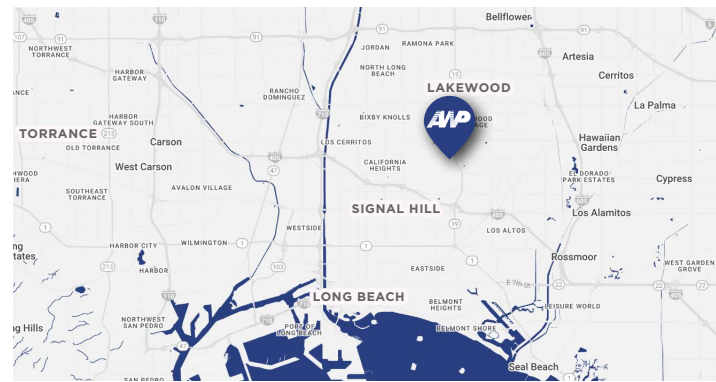
3828 SCHAUFELE AVE | STE 250

Long Beach, CA 90808



PRIME MEDICAL OFFICE SUITE FOR LEASE

Available February 1, 2026, Suite 250 at 3828 Schaufele Ave offers 5,574 square feet of premium office/medical space within the exclusive Douglas Park Medical Campus. This strategically located property provides easy access via Lakewood Blvd and the 405 Freeway, placing it at the heart of Long Beach's medical community. The suite is surrounded by six major hospitals within a 5-mile radius, making it an exceptional choice for medical professionals. Additionally, the building offers abundant free surface and covered physician parking, ensuring convenience and accessibility for patients and staff, as well as three building elevators. Please contact Patricia Kaminski for touring appointments.



Space Available	5,574 SF
Rental Rate	Upon Request
Date Available	February 01, 2026
Lease Type	NNN
Space Type	Relet
Space Use	Office/Medical
Lease Term	Negotiable
Divisible	No

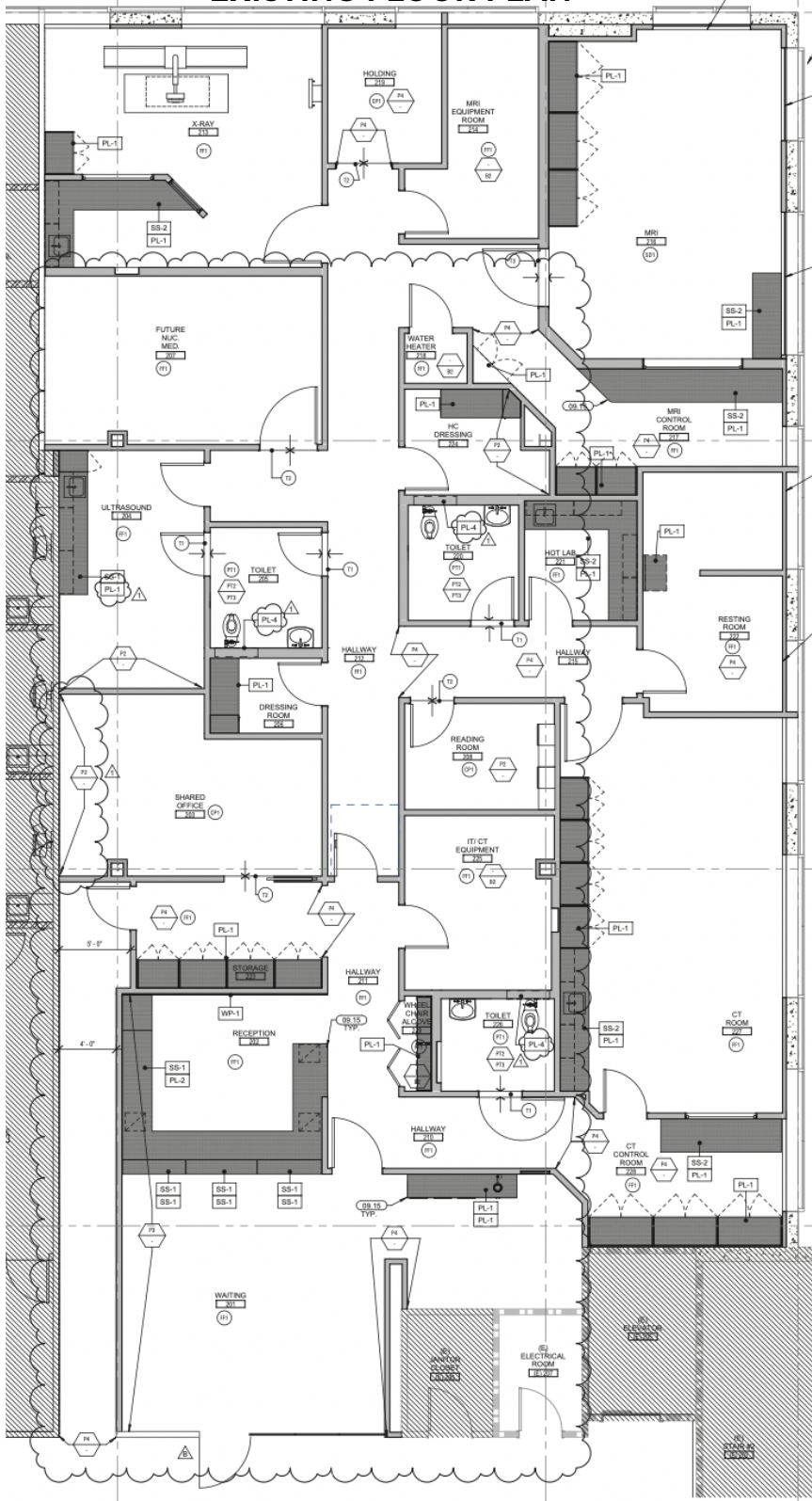
Eric Strauss | Principal
 949 458-5861
 eric@awpmt.com
 BRE 01153688

America West Properties, Inc.
 22541 Aspan Street, Suite H
 Lake Forest, CA. 92630
 949-458-5861
 949-458-6259 Fax
 License#01188837

 **AMERICA WEST PROPERTIES**
 Real Estate Services

PRIME MEDICAL OFFICE SUITE FOR LEASE

EXISTING FLOOR PLAN



** TENANT TO VERIFY LAYOUT

