

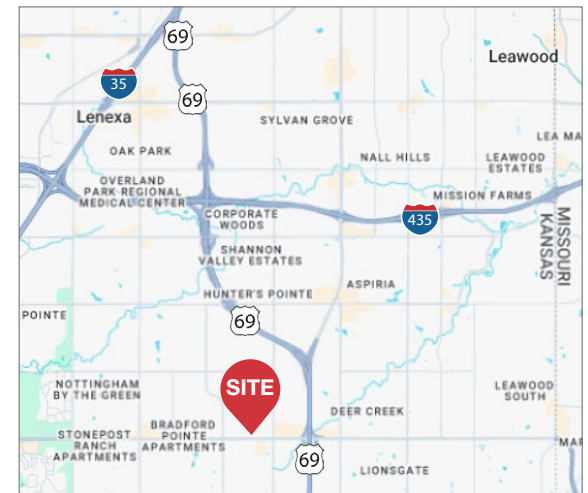


9156 W 135th St

Overland Park, KS 66210

Property Features

- 1,353 SF Available
- Building signage with glass frontage
- Located directly behind QuikTrip
- Office buildout with two private restrooms and a break area
- Ideal location in a top tier demographic area
- Lease Rate: \$16/SF Net



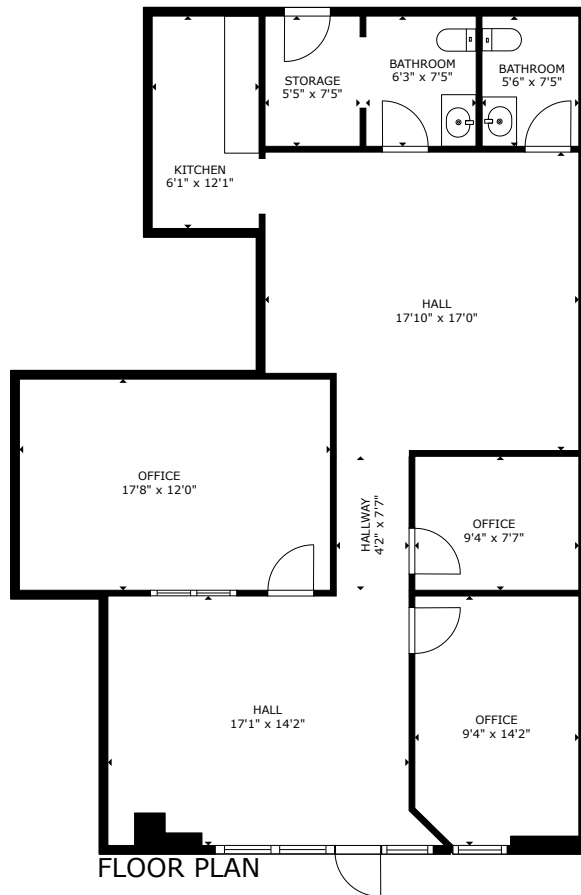
NO WARRANTY OR REPRESENTATION, EXPRESS OR IMPLIED, IS MADE AS TO THE ACCURACY OF THE INFORMATION CONTAINED HEREIN, AND THE SAME IS SUBMITTED SUBJECT TO ERRORS, OMISSIONS, CHANGE OF PRICE, RENTAL OR OTHER CONDITIONS, PRIOR SALE, LEASE OR FINANCING, OR WITHDRAWAL WITHOUT NOTICE, AND OF ANY SPECIAL LISTING CONDITIONS IMPOSED BY OUR PRINCIPALS NO WARRANTIES OR REPRESENTATIONS ARE MADE AS TO THE CONDITION OF THE PROPERTY OR ANY HAZARDS CONTAINED THEREIN ARE ANY TO BE IMPLIED.

4400 College Boulevard Suite 170
Overland Park, Kansas 66211
+1 913 362 1000

nai-heartland.com

Available for Lease

1,353 SF Office Space



DEMOGRAPHICS

	1 MILE	3 MILES	5 MILES
Est. Population:	9,916	98,523	231,582
Median HH Income:	\$140,992	\$121,120	\$120,363
Daytime Population:	8,945	95,190	269,776

