

3960 3rd Ave

San Diego, CA
92103

7,975 SF
Single-Tenant
Medical Building
14 Parking Spots

YOUR NAME HERE

3960

16

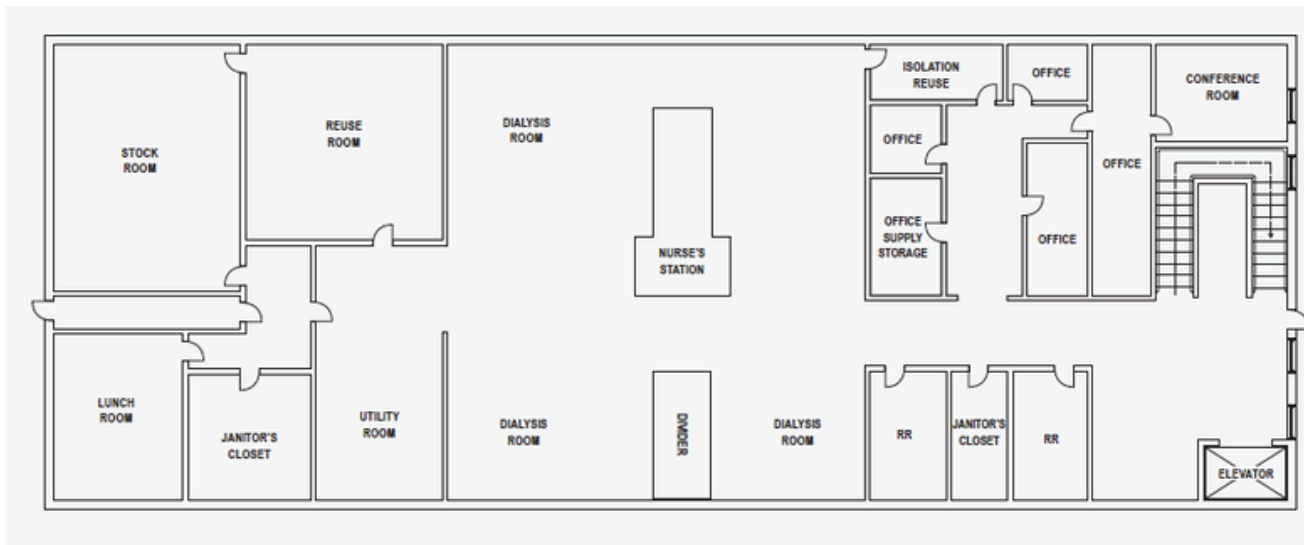
619-243-1244

www.stromcommercial.com



OFFICE HIGHLIGHTS

- Rate = \$3.50/SF NNN (est. \$0.50 NNN)
- ± 7,975 SF building
- Single-User Medical Opportunity
- Secure onsite underground parking with 14 spaces + multiple access points
- Signage available
- Elevator + stairwell served
- 1,200 Amps of Power
- 2 roll-up doors, 1 garage door, access from both 3rd Ave & Alley
- Across from Scripps Mercy Hospital



CONTACT

Jack Schreibman | LIC #02172891
jschreibman@stromcommercial.com

Hans Strom | LIC #02172891
Hans@stromcommercial.com

