



100-30th Street NW Canton, Ohio 44709

SQ FT AVAILABLE	620 - 1240
LEASE RATE	\$11.00/SF
LEASE TYPE	CAM + utilities (\$4.00/SF)
STORIES	1
CONSTRUCTION	Brick
ACRES	1.3
ZONING	B1

Suite	SQ FT	Rate/SF	CAM	Monthly
110	620	\$11.00	\$4.00	\$775.00
103	1,240	\$11.00	\$4.00	\$1,550.00

Property Features

- Two suites available in this well cared for property.
- Common areas and ADA restrooms have been recently updated.
- Conveniently located at 30th Street and Route 62 on ramp.
- Monument signage available on 30th Street.

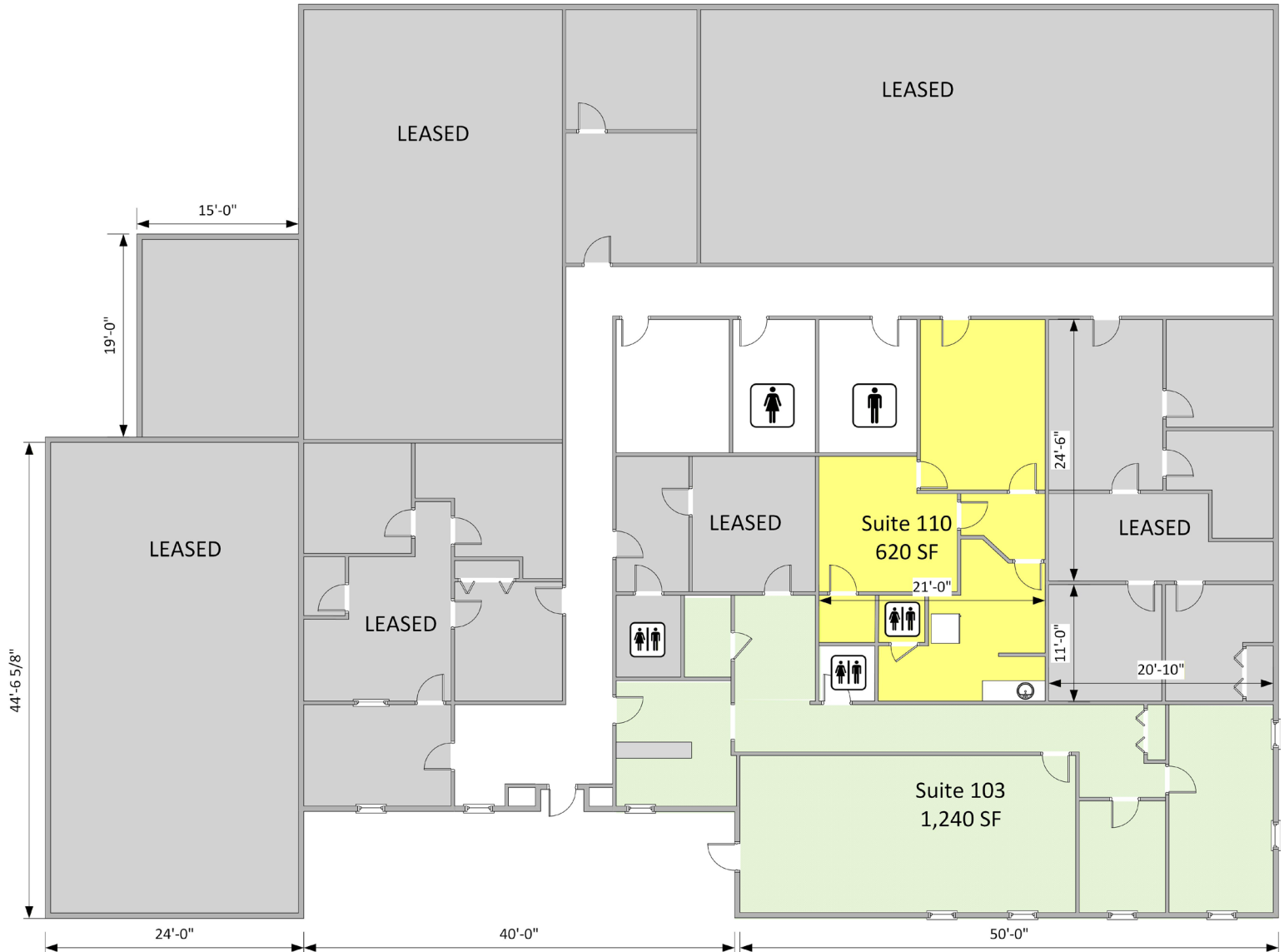


Kelly Sober, CCIM

P 330 497 9837
kelly@naispring.com

Dan Spring, SIOR

P 330 497 6249
dan@naispring.com



*DIMENSIONS ARE APPROXIMATE. THIS INFORMATION IS FROM RELIABLE SOURCES BUT IS NOT GUARANTEED AND IS SUBJECT TO CHANGE

NO WARRANTY OR REPRESENTATION, EXPRESS OR IMPLIED, IS MADE AS TO THE ACCURACY OF THE INFORMATION CONTAINED HEREIN, AND THE SAME IS SUBMITTED SUBJECT TO ERRORS, OMISSIONS, CHANGE OF PRICE, RENTAL OR OTHER CONDITIONS, PRIOR SALE, LEASE OR FINANCING, OR WITHDRAWAL WITHOUT NOTICE, AND OF ANY SPECIAL LISTING CONDITIONS IMPOSED BY OUR PRINCIPALS NO WARRANTIES OR REPRESENTATIONS ARE MADE AS TO THE CONDITION OF THE PROPERTY OR ANY HAZARDS CONTAINED THEREIN ARE ANY TO BE IMPLIED.

8234 Pittsburg Ave NW
North Canton, OH 44720
+1 330 966 8800
naispring.com



NO WARRANTY OR REPRESENTATION, EXPRESS OR IMPLIED, IS MADE AS TO THE ACCURACY OF THE INFORMATION CONTAINED HEREIN, AND THE SAME IS SUBMITTED SUBJECT TO ERRORS, OMISSIONS, CHANGE OF PRICE, RENTAL OR OTHER CONDITIONS, PRIOR SALE, LEASE OR FINANCING, OR WITHDRAWAL WITHOUT NOTICE, AND OF ANY SPECIAL LISTING CONDITIONS IMPOSED BY OUR PRINCIPALS NO WARRANTIES OR REPRESENTATIONS ARE MADE AS TO THE CONDITION OF THE PROPERTY OR ANY HAZARDS CONTAINED THEREIN ARE ANY TO BE IMPLIED.

8234 Pittsburg Ave NW
North Canton, OH 44720
+1 330 966 8800
naispring.com