

FOR LEASE

Loft Office Space
4,008 RSF

1643 N. Milwaukee Ave. - Bucktown

CHICAGO, IL 60647



DETAILS:

Spaces **Suite 300:** Approx. 4,008 RSF. **Rent:** \$28.00 per RSF, MG

For more info, contact:

Dave Schraufnagel
(773) 430-6406
dave@d4realtyinc.com

D4 Realty, Inc.

Location Bucktown Neighborhood (1 block from Blue Line L, 2 blocks from 606 Trail, 7 blocks from Kennedy Expressway)

Extensively renovated loft office building offers thoughtfully designed workspace. Direct elevator access, large windows that flood the space with natural light, high ceilings and polished concrete floors. Modern lighting and custom fixtures add a sleek, contemporary touch. Work efficiently in a versatile layout that combines private offices and conference rooms with stylish glass fronts, alongside spacious open bullpens ideal for collaborative workstations. Enhanced amenities include kitchenettes on every level, creating a welcoming atmosphere for events and gatherings.

Virtual Tour: <https://my.matterport.com/show/?m=i12JWoVLC35>



Brokerage | Consulting | Management | Acquisitions

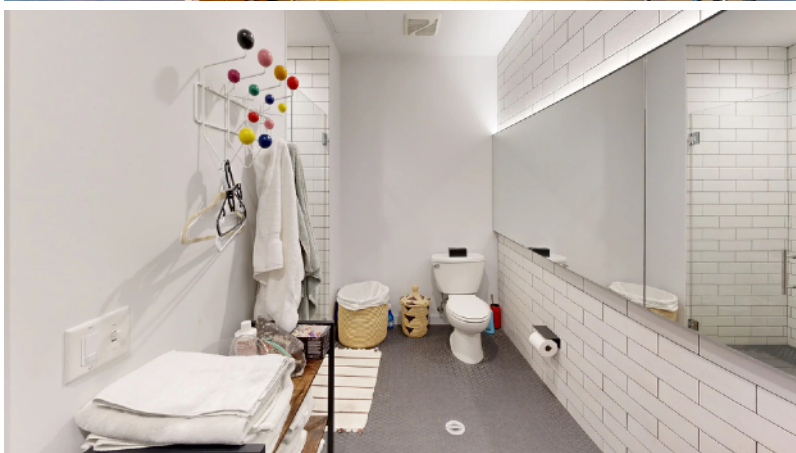
FOR LEASE

Loft Office Space

4,008 RSF

1643 N. Milwaukee Ave. - Bucktown

CHICAGO, IL 60647



FOR LEASE

Loft Office Space
4,008 RSF

1643 N. Milwaukee Ave. - Bucktown

CHICAGO, IL 60647

3rd Floor

